

# A13/A130 Sadlers Farm project newsletter

[www.balfourbeatty.com/sadlersfarm](http://www.balfourbeatty.com/sadlersfarm)

June 2020

## We are undertaking a programme of remedial works on the A13/A130 Sadlers Farm scheme on behalf of Essex County Council.

The final phased programme of remedial works at Sadlers Farm is planned to complete at the end of 2020.

The remaining works to the end of 2020 include the drainage upgrades, bridge remedial works, replacement of bearings on two bridges, various fencing improvements and surfacing works on London Road and A13/A130.

Some of these bridge remedial works will involve a full closure of the Eastbound A13 diverge between the main A13 and Sadlers Farm Roundabout in the Summer 2020 to undertake intrusive structural repair work to Sadlers Farm Bridge, plus various weekend closures in September and October 2020 of the A130 North Bound onslip/merge from Sadlers Farm Roundabout towards Rayleigh Spur Roundabout to undertake structural repair work to Sadlers Hall Bridge. Further information and details can be found further in this newsletter.

Subject to ECC Network Assurance approvals, these dates may change. All other information about the project can be found on our dedicated web page:

[www.balfourbeatty.com/sadlersfarm](http://www.balfourbeatty.com/sadlersfarm)

## Traffic Management Phases

### Ongoing until end of 2020

- Various overnight carriageway closures (East and West) between Pitsea Interchange and Rayleigh Spur to carry out carriageway and verge works, which include bridge repairs, resurfacing and drainage works

### Ongoing until end of 2020

- Various off-peak single lane closures on the A13/A130 (East and West) to undertake various roadside drainage works, CBP wall works and bridge repairs

### July 2020 and October 2020

- Various single lane closures of London Road (B1464) between Pound Lane and Sadlers Farm Roundabout for drainage works, kerb and carriageway reconstruction, and expansion joint installation. **Please note:** Property access will be maintained throughout closure

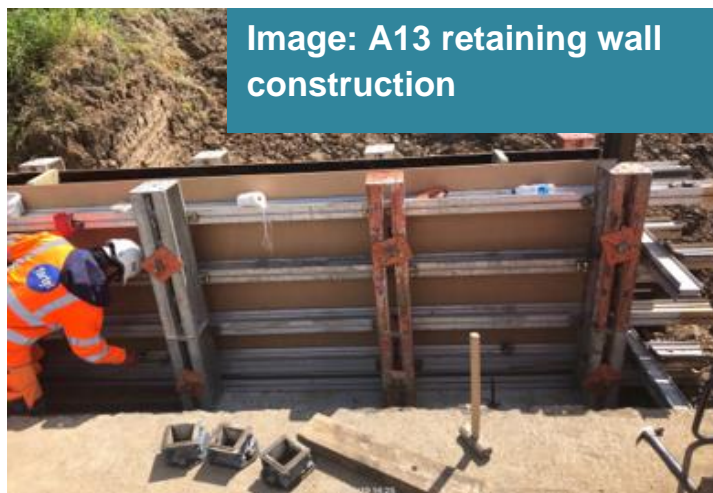
### 22<sup>nd</sup> July to 31<sup>st</sup> August 2020

- Between 10pm Thursday 22<sup>nd</sup> July and 5am Monday 31<sup>st</sup> August 2020 the Eastbound A13 diverge between the main A13 and Sadlers Farm Roundabout will be under full road closure to carry out some essential works to Sadlers Farm Bridge. **Please note:** Diversion route will be established during these closures. Working Hours: 24/7

## September and October 2020

- A130 North Bound onslip/merge from Sadler's Farm Roundabout towards Rayleigh Spur Roundabout for closure over various weekends to undertake Sadlers Hall Bridge surfacing, waterproofing, and expansion joint works . Please note: Diversion route will be established during this closure. Working Hours: 24/7

(Please note: all the road closures listed above are subject to change.)



## Frequently Asked Questions

### Q: When is the project due to complete?

A: Our works are now due to complete at the end of 2020.

### Q: Will there be any road closures?

A: We will implement a multi-phase traffic management plan, comprising of a series of bridge closures, lane closures, overnight and weekend works to carry out the remedial works which will inevitably and unfortunately cause some disruption to road users and local communities. Visit our project news page for more information.

### Q: What are your working hours?

A: Our general site hours will be from 7am – 6pm Monday to Friday and we shall undertake selective activities at weekends. Traffic management and other specific works, unable to be carried out during the day, will also be programmed at night between 8pm - 5am.

### Q: What works are being undertaken?

A: Our works include the upgrading of existing drainage systems on the A13/A130 at various locations, reconstruction of the approach and departure abutments of Sadlers Farm Bridge, resurfacing and expansion joint replacement of Sadlers Hall Bridge, the replacement of bearings on two bridges, and various surfacing works on London Road and A13/A130.

### Q: How can I register a complaint?

A: We have a dedicated 24/7 helpline team who will be able to investigate any issues. You can call on: 0800 121 4444 or email [help@balfourbeatty.com](mailto:help@balfourbeatty.com).

For out of hours, emergency contact, please call our 24/7 Helpline team free on **0800 121 4444** or email **[help@balfourbeatty.com](mailto:help@balfourbeatty.com)**

To find out the latest project updates on A13/A130 Sadlers Farm scheme, please visit our project web page here:  
**[www.balfourbeatty.com/sadlersfarm](http://www.balfourbeatty.com/sadlersfarm)**

For road and traffic information follow:

**[@essex\\_travel](https://twitter.com/essex_travel)**

**[#sadlersfarm](https://twitter.com/sadlersfarm)**