



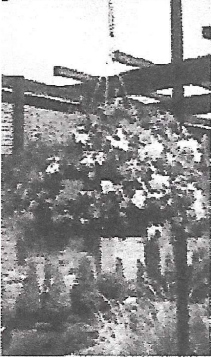
# Craft Nurseries

Sponsors of the Ardleigh flower show

GARDEN PLANT CENTRE



*One of the features that makes Craft Nurseries extra special is our own on site production nursery. This gives us an excellent opportunity to produce the very best quality plants for our customers. Our own grown plants are never subjected to lengthy road journeys, so they are always*



## NURSERY FRESH



Restaurant and Coffee Shop



## PLAY BARN

@ CRAFT NURSERIES



### CHILDRENS SOFT PLAY CENTRE

Jumping Pillow  
Pygmy Goats  
Rabbits  
Birthday Parties

Muddy Kitchen  
Witches Wood  
Cafe

**COME AND  
SEE US  
OPEN 7 DAYS  
A WEEK**

#### EASY TO FIND

We are between Ardleigh and Lawford on the A137, near to the railway bridge. Look out for our sign - you won't miss our beautiful flower display!

Ardleigh      A137      Lawford  
we are here

Harwich Road, Lawford  
**01206 230699**

*Clematis  
Perennials  
Shrubs  
Bedding Plants  
Patio Plants  
Pots ...  
... the list goes on*

ARDLEIGH AND DISTRICT  
HORTICULTURAL SOCIETY

# ANNUAL FLOWER & PRODUCE SHOW

**SATURDAY 16<sup>th</sup> AUGUST 2025**

**ARDLEIGH VILLAGE HALL**

Opens at 2.00pm



**Sponsored by Craft Nurseries, Lawford**

## **RULES**

- 1 All specimens must be the property of the exhibitor and all plants must have been in their possession for the two months previous to the show. If any fraud is detected, the prize will be forfeited and given to the next highest point scorer in rotation. Flowers and foliage etc. in classes DC1 – DC6 need not be grown by the exhibitor.
- 2 An exhibitor may not enter more than one exhibit in any one class. No joint entries will be accepted (except School Gardening Club)
- 3 Each exhibitor must provide any dishes, vases, containers etc. necessary for the display of their exhibits.
- 4 No exhibitor may touch or interfere in any way with exhibits other than their own without permission of the show secretary. Failure to comply with this rule will render their own exhibits liable for disqualification.
- 5 The decision of the judges is final and no appeals will be allowed.
- 6 The judges may withhold any prize if they consider the exhibits not worthy of any award or if there are insufficient entries. The Committee reserves the right to substitute further special prizes for any of the cash prizes. In no case will the value be less than that advertised in the schedule.
- 7 The Committee will not be responsible for any accident, loss or damage to any exhibit, vase or container, although every care will be taken.

- 8 **Entry forms must be received no later than 6:30pm on Wednesday 13<sup>th</sup> August 2025. Entry forms can be delivered or posted (with entry fee) to 4 Chapel Croft, Ardleigh, CO7 7TQ (poster in the window). Or scan the entry form & email it to [ArdleighHorticultural@gmail.com](mailto:ArdleighHorticultural@gmail.com). Entry fees for forms emailed must be paid in full for all the classes identified on the emailed form when you bring your entries to the hall on Friday evening or Saturday morning. Any problems, please ring the Show Secretary (01206 231311). **NO LATE ENTRIES WILL BE ACCEPTED****

- 9 The entry fee is 25p for each class, except for the Children's section which is free. There is a maximum entry cost of £5.00.
- 10 Exhibits can be staged on Friday evening from 7.30pm to 8.30pm and on the day of the show from 7.45am until 10.15am. Exhibitors must vacate the hall by 10.15am. Judging will begin at 10.30am.

## **Officers and Committee Members**

### **Chairperson**

Brian Dundon 01206 231245

### **Vice Chairperson**

Diana Whitfield

### **Treasurers**

Kevin Jackson  
Rosie Jackson

### **Minutes Secretary**

Viv Golding

### **Show Secretary**

Rosie Jackson 01206 231311 email [ardleighhorticultural@gmail.com](mailto:ardleighhorticultural@gmail.com)

### **Programme Secretary**

Rosie Jackson

### **Social Secretary**

Diana Whitfield

### **Committee**

John Culley  
Christine Farge  
Lydia Geddes  
Carolyn Mason

### **WHY NOT JOIN OUR SOCIETY?**

Membership is only £5 for the 2025-2026 season.

This entitles you to free admission to the Annual Show and to our evening meetings held in the Village Hall on the second Thursday of October, December, February, April & June

Our first meeting is on Thursday 9<sup>th</sup> October starting at 7.45pm

Non-members are always welcome at our meetings, admission is only £2.

**5 evenings of entertainment  
plus entry to the Show  
for only £5.00 per year!!!!**

## 5. Recipe for Date & Walnut Cake (C9)

### Ingredients

100g stoned dates  
100g walnuts  
170g margarine  
170g dark muscovado sugar  
3 medium eggs  
225g self raising flour

### Method

1. Chop the dates and walnuts roughly
2. In a bowl cream the margarine and sugar together until pale and fluffy. Add the eggs one at a time beating well. Stir in a little flour if the mixture begins to curdle. Fold in the remaining flour and the dates & walnuts.
3. Place the mixture in a greased 2lb loaf tin. Smooth the top and sprinkle with granulated sugar.
4. Bake for approx. 60 minutes at 180c/355f/gas mark 4, until firm to touch and dark golden. Leave to cool for 10 minutes before turning out.

**The Ardleigh and District Horticultural Society would like to thank everyone involved in any way in planning, setting up and participating in the successful Annual Flower & Produce Show.**

Special thanks are due to the following for their support of the 2024 Show

- Craft Nurseries, our main sponsor, for their generous sponsorship and distributing the Show Schedule.
- Jubilee Restaurant, Percival Engineering, Debbie Millar School of Dance, Ardleigh Garden Maintenance and Brantham Mill Crafts and individuals who sponsor the class prize money.
- Ardleigh Convenience Store for distributing the Show Schedules
- David Mason for transporting the tables to and from the village hall

### **ADMISSION TO THE SHOW - £1**

**Members free (on production of membership card)  
Children under 14 years free**

- 11 All exhibitors or their representatives will need to be at the hall for the prize giving which will take place at 4.15pm. The raffle will be drawn after the prize giving.
- 12 No exhibit may be removed from the hall before the completion of the raffle draw, without permission of the Show Secretary. Any exhibits remaining after 5.00pm will be disposed of.
- 13 Lost and found. The Committee is not responsible for any items lost or damaged but if you do lose an exhibit at the end of the show or if you find that you have taken home an exhibit that does not belong to you, contact the Show Secretary on 01206 231311 (or email [ardleighhorticultural@gmail.com](mailto:ardleighhorticultural@gmail.com)) and we will try to match lost with found.
- 14 Prize money will be paid out from 3:30pm at the show secretary's office in the Village Hall or must be collected from the show secretary (contact details as above) within 7 days of the show.
- 15 All cups and trophies are the property of the Society and must be returned to a Committee member by the end of July.
- 16 The points awarded in each class will be:  
First – 4; Second – 3; Third – 2
- 17 The prize money for each class will be  
First – £1.00; Second – £0.50p; Third – No prize money
- 18 Additional copies of the schedule and entry forms can be downloaded from the society's website <https://e-voice.org.uk/ardleigh-horticultural-society/>  
Hints and tips for Exhibitors can also be found there.
- 19 Exhibitors who have not entered the Ardleigh Annual Show before should indicate this on their entry form as an award will be presented to the new exhibitor with the most points in the show.

**Take a good look through the schedule, see just what classes you could enter and encourage others to get involved.**

The Society's website has a list of Hints & Tips for Exhibitors, covering all the sections in the show.  
Visit <https://e-voice.org.uk/ardleigh-horticultural-society/>

## TROPHIES and 2024 Winners

Open to residents of Ardleigh only.

**Classes A1 – A11** – R J Croxon Perpetual Challenge Tankard.

Awarded for the highest number of points. **Chris Whitfield.**

**Classes A1 – A11** – E C Catling Perpetual Challenge Cup.

Awarded to the runner up to Perpetual Challenge Tankard. **John Culley.**

Vegetable Section

**Classes O1 – O20** – S H Every Perpetual Challenge Cup.

Awarded for the highest number of points. **Chris Whitfield.**

Bill Sparkes Perpetual Challenge Salver

Awarded for the best exhibit from classes A1–A7 and O1–O16. **Kevin Jackson.**

Flower Section

**Classes F1 – F19** – G Osborne Perpetual Challenge Cup

Awarded for the highest number of points. **Andy Owens.**

**Classes F1 & F2** – The Connie Revill Perpetual Challenge Trophy

Awarded for the best exhibit of Gladiolus. **Andy Owens.**

**Classes F3 – F19** – The Brenda Sparling Salver

Awarded for the best exhibit in these classes. **Andy Owens.**

Dahlia Section

**Classes D1 – D8** – W Hudson Perpetual Challenge Cup

Awarded for the highest number of points. **Roger Cook.**

**Classes D1 – D8** – The Patrick and Lilian Sparling Memorial Salver

Awarded for the best exhibit in this section. **Roger Cook.**

Decorative Section

**Classes DC1 – DC6** – W J Freeman Perpetual Challenge Cup

Awarded for the highest number of points. **Rosie Skeet.**

**Classes DC1-DC6** – The Sparling Salver (Decorative)

Awarded for the best exhibit in this section. **Rosie Skeet.**

Homemade Wine Section

**Classes W1 – W7** – Mrs E Clayton Perpetual Challenge Cup

Awarded for the highest number of points. **John Culley and Linda Spinks.**

**Classes W1 – W7** – Wine Salver

Awarded for the best exhibit in this section. **John Culley.**

Cookery Section

**Classes C1 – C14** – Mrs V Mowles Perpetual Challenge Cup

Awarded for the highest number of points. **Barbara Borrell.**

**Classes C1 – C14** – The Downing Perpetual Challenge Salver

Awarded for the best exhibit in this section. **Hannah Dingley.**

## APPENDICES

### 1. **Notes for wine exhibitors. (Classes W1-W7)**

Wine kits cannot be used.

Wine must be exhibited in a standard, clear, colourless glass wine bottle of Sauterne type (approximately 26 fl. oz/75 cl.) and sealed with a flange type stopper. Bottles should be filled to within 1" to ¾" of the base of the stopper. Labels should be plain white and marked with the class number only. Each bottle should also be marked with the exhibitor's number using the labels provided, this label being placed on the underside of the bottle.

Exhibitors are asked to name the variety of fruit/vegetable used to produce their wine/flavoured spirit. This information should be written on a separate card available from the show secretary and should be visible for judging.

### 2. **Notes for cookery exhibitors**

In the interests of food hygiene, all food items should be plated (but not on a paper plate) and loosely covered with cling film. Please do not display on a doily. Do not cut your exhibit in half, this will be done during judging. Where the schedule has asked for details of ingredients, please provide this information.

Jams and marmalades should be exhibited in clear glass jars with plain labels. Metal tops, if used, should be new, otherwise tight cellophane should be used.

Dusting your Victoria Sandwich with caster sugar instead of icing sugar gives a better finish. Your Victoria Sandwich must be filled with jam only.

List any ingredients that are not "the norm" on a spare piece of paper/card beside your exhibit.

### 3. **Number of Stone Fruit required for exhibit (Class O18)**

All fruit must be displayed with stalks attached.

Fruit	Number for dish	Fruit	Number for dish
Apricots	6	Nectarines	3
Cherries	10	Peaches	3
Damsons	6	Plums	6
Greengages	6		

For numbers for any other stone fruit, please contact the Show Secretary

### 4. **Number of Fruit required for exhibit (Class O19)**

All fruit must be displayed with stalks attached.

Fruit	Number for dish	Fruit	Number for dish
Apples/Pears/Figs/Quinces	3	Blackberries/Raspberries	12
Currants/Blueberries	Dish of 100g	Strawberries	9
Grapes	1 bunch	Gooseberries	12

For numbers for any other fruit, please contact the Show Secretary

## CHILDREN'S CRAFTS SECTION

*NAMES – must be written on the back of the exhibit only*

*AGES – may be written on the front*

### AGE 4 YEARS AND UNDER

- CH1 A decorated paper lantern
- CH2 A Duplo/Lego animal
- CH3 A vegetable print design or picture (max size A4)
- CH4 A decorated paper plate

### AGES 5 TO 8 YEARS - INCLUSIVE

- CH5 A model made from recycled materials
- CH6 An animal made from fruit & vegetables
- CH7 An artificial flower - any material
- CH8 A painted stone

### AGES 9 TO 13 YEARS - INCLUSIVE

- CH9 An insect hotel made from natural materials (*max size 10"x10"/25cmx25cm*)
- CH10 3 Flapjacks
- CH11 A model made from recycled materials
- CH12 A photo of your favourite meal
- SC1 St Mary's School gardening club class – Judged at St Mary's school in June. The Challenge shield to be presented at the show.

The Society's website has a list of Hints & Tips for Exhibitors, covering all the sections in the show.

Visit <https://e-voice.org.uk/ardleigh-horticultural-society/>

### Handicrafts Section

**Classes H1 – H7** – Mr L S Trew Perpetual Challenge Cup

Awarded for the highest number of points. **Barbara Borrell and Rosie Jackson.**

**Classes H1 – H7** – The Sparling Salver (Handicrafts)

Awarded for the best exhibit in this section. **Rosie Jackson.**

### Home Craft Sections

**Classes DC1-DC6, C1-C14 and H1-H7**

The Lynne Askham Memorial Rose Bowl for most points across Decorative, Cookery and Handicraft Sections – **Barbara Borrell.**

### Photography Section

**Classes P1 – P8** – J M & B K Pearce Perpetual Challenge Camera Cup

Awarded for the highest number of points. **Pat Ainger.**

**Classes P1 – P8** – D Underdown Perpetual Challenge Trophy

Awarded to the runner up. **Ian Parker.**

**Classes P1 – P8** - Photography Salver

Awarded for the best exhibit in this section. **Pat Ainger.**

### Children's Section

**Classes CH1 – CH4 (Age 4 years and under)** – Mrs R Parsons Perpetual Challenge Cup.

Awarded for the highest number of points. **Lucy McTurk.**

**Classes CH5 – CH8 (Age 5 – 8 years)** – Dorothy Culley Cup

Awarded for the highest number of points. **Leo Bruce.**

**Classes CH9 – CH12 (Age 9 – 13 years)** – Mr J Snell Perpetual Challenge Cup

Awarded for the highest number of points. **(not awarded).**

**Classes CH1 – CH12** – David Sibley Shield

Awarded for the best exhibit in this section. **Leo Bruce.**

**Class SC1** – The Edwards Perpetual Challenge Shield.

Awarded for best exhibit in the Ardleigh St Mary's Primary School gardening club class. **Joseph Coombs.**

### All Sections

The Brian Dundon Cup – for most points gained by a new exhibitor.

**Sarah Blyth.**

The Gordon Locke Shield – for the most points gained by an Ardleigh resident.

**John Culley.**

The Mrs R Parson's Shield — for the highest number of points in the show.

**John Culley.**

## DIVISION ONE

OPEN TO THE RESIDENTS OF ARDLEIGH ONLY

A1-A7 Each dish to contain only one variety

- A1 5 white or coloured potatoes
- A2 5 runner beans
- A3 3 carrots with tops trimmed to approximately 3"/7.5cm
- A4 3 round beetroot with tops trimmed to approximately 3"/7.5cm
- A5 5 ripe tomatoes
- A6 5 onions
- A7 2 courgettes approximately 6"/15.25cm in length
- A8 A flowering plant in a pot of 8"/20cm or under diameter
- A9 1 vase or bowl of mixed garden flowers
- A10 1 pelargonium head in a vase
- A11 1 specimen rose bloom – hybrid tea type (no buds)

The naming of exhibits is always recommended. It adds interest to the show and may give an advantage in close competition.

The Society's website has a list of Hints & Tips for Exhibitors, covering all the sections in the show.  
Visit <https://e-voice.org.uk/ardleigh-horticultural-society/>

## HANDICRAFTS SECTION

OPEN TO EVERYONE

All articles, with the exception of H1, to be new and unwashed. All Classes - please state on a separate piece of card if own design or from a pattern or from a kit, and if there is anything special about your exhibit that is not obvious. No articles to have been exhibited at a previous Ardleigh Show.

- H1 Something made by recycling an item/items of clothing. Will be judged on originality, imagination and quality. (*max display area 15"x15"/38cmx38cm*)
- H2 Any handmade knitted or crocheted article or matching set (*max display area 18"x18"/46cmx46cm*)
- H3 A Remembrance Poppy, made in any medium
- H4 Any piece of embroidery or tapestry
- H5 A handmade soft toy (no hard accessories – e.g. buttons, hard eyes etc)
- H6 An item of any other craft – excluding art - (*max display area 18"x18"/46cmx46cm – no height restriction*)
- H7 A Christmas tree decoration

## PHOTOGRAPHY SECTION

OPEN TO EVERYONE

Photographs may be no larger than 6" x 4", must not be mounted and must not have been exhibited at a previous Ardleigh Show. No digitally altered photographs allowed. Please write or affix your name and the class number on the back of the photograph. Please follow the instructions at the hall for exhibiting your entries.

- P1 Subject: Close Up
- P2 Subject: A black and white photograph
- P3 Subject: A View Through
- P4 Subject: Street Photography
- P5 Subject: Within the Tendring District (*name exact location*)
- P6 Subject: Local wildlife
- P7 Subject: Autumn

## **HOMEMADE WINE SECTION**

OPEN TO EVERYONE

### **IMPORTANT NOTES FOR EXHIBITORS** – please see Appendix 1 (Pg. 12)

- |    |  |
|----|--|
| W1 | 1 bottle of sweet root vegetable wine  |
| W2 | 1 bottle of sweet red wine   |
| W3 | 1 bottle of sweet white wine   |
| W4 | 1 bottle of dry fruit wine   |
| W5 | 1 bottle of dry white wine   |
| W6 | 1 bottle of dry red wine   |
| W7 | 1 bottle of flavoured spirit using natural flavouring (not from a kit) ( <i>does not need to be in a 75cl bottle</i> ) |

## **COOKERY SECTION**

OPEN TO EVERYONE

### **IMPORTANT NOTES FOR EXHIBITORS** – please see Appendix 2 (Pg. 12)

- |     |   |
|-----|---|
| C1  | 3 savoury scones ( <i>name main ingredients</i> )                                   |
| C2  | A freeform loaf (i.e. not baked in a tin)   |
| C3  | 3 fruit scones  |
| C4  | A Victoria sandwich – using 3 eggs, jam only filling                                |
| C5  | 3 undecorated sweet biscuits ( <i>name main ingredients/flavours</i> )              |
| C6  | 3 pieces of tray bake ( <i>name main ingredients</i> )                              |
| C7  | A Lemon Drizzle cake  |
| C8  | 3 pieces of cake with a fresh vegetable ingredient ( <i>name main ingredients</i> ) |
| C9  | A Date and Walnut cake ( <i>using the recipe provided on page 13</i> )              |
| C10 | 3 pieces of gingerbread   |
| C11 | 1 jar of fruit curd (e.g. lemon, orange, etc)                                       |
| C12 | 1 jar of soft fruit jam   |
| C13 | 1 jar of jelly  |
| C14 | 1 jar of marmalade (citrus fruit)   |

## **DIVISION TWO** **FRUIT AND VEGETABLE SECTION**

OPEN TO EVERYONE

O1-O16 and O18-O20 Each dish to contain only one variety

- |     |  |
|-----|--|
| O1  | 5 white potatoes   |
| O2  | 5 coloured potatoes  |
| O3  | 5 Runner beans   |
| O4  | 9 French beans   |
| O5  | 10 cherry tomatoes   |
| O6  | Longest runner bean  |
| O7  | Most misshapen vegetable   |
| O8  | 3 carrots with tops trimmed to approximately 3"/7.5cm  |
| O9  | 3 round beetroot with tops trimmed to approximately 3"/7.5cm   |
| O10 | 5 onions to be judged on colour, quality and consistency   |
| O11 | A dish of 9 shallots   |
| O12 | 5 ripe tomatoes  |
| O13 | 2 cucumbers  |
| O14 | 2 courgettes approximately 6"/15.25cm in length  |
| O15 | 3 sweet peppers  |
| O16 | 5 chilli peppers of one variety  |
| O17 | 5 a day from your garden – one of each of any 5 fruit or vegetable. To be displayed on a dinner plate (max 12"/30.5cm diameter) – Not to overhang the plate. |
| O18 | A dish of stone fruit of one variety (for number to be displayed see appendix 3 on page 12).   |
| O19 | A dish of one variety of fruit not included in this schedule (for number to be displayed see appendix 4 on page 12)  |
| O20 | Any other vegetable  |

## **FLOWERS SECTION**

*OPEN TO EVERYONE*

**Flowers to be exhibited in vases, not jugs, jam jars, bowls or bottles.**

- F1 1 spike of gladiolus
- F2 3 spikes of gladioli
- F3 1 stem of floribunda rose any variety
- F4 3 stems of roses of any variety/varieties excluding floribunda
- F5 3 pelargonium heads – one or more varieties
- F6 1 vase of 5 stems of any one variety of annual - colour variation allowed
- F7 1 vase of mixed annuals (at least 3 different varieties)
- F8 1 vase of garden flowers attractive to beneficial insects (may include shrubs)
- F9 1 vase of 5 stems of one genus of hardy herbaceous perennial (excluding shrubs & dahlias) – colour variation allowed
- F10 1 vase of 5 stems of different genus of hardy herbaceous perennials (excluding shrubs & dahlias)
- F11 1 vase of 3 stems of flowering shrubs (excluding hydrangeas) – one or more varieties
- F12 1 vase of 10 stems of mixed flowers of at least 3 different genus
- F13 1 flowering plant in a pot of 8"/20cm or under diameter
- F14 1 cactus in a pot of 8"/20cm or under diameter
- F15 1 succulent in a pot of 8"/20cm or under diameter
- F16 1 foliage pot plant in a pot of 8"/20cm or under diameter
- F17 1 rose – for perfume only (please name variety, if known)
- F18 3 stems of hydrangeas
- F19 1 vase of any variety/varieties of ornamental grasses
- F20 1 vase of home grown herbs to be judged for variety and quality (can include flowers, seed heads and lavender)

## **FLOWERS SECTION - DAHLIAS**

*OPEN TO EVERYONE*

**Dahlias to be exhibited in vases (or a bowl for class D7), not jugs, jam jars or bottles.**

- D1 1 giant or large dahlia
- D2 3 decorative dahlias
- D3 3 cactus or semi-cactus dahlias
- D4 3 ball dahlias
- D5 3 pompon dahlias
- D6 3 dahlias of any other type
- D7 A vase or bowl (9"/23cm or under) of mixed dahlias to be judged for all round effect—*no larger than 18"x18"/46 x 46cm*)
- D8 3 vases of any cultivar of dahlias – 3 blooms per vase

## **DECORATIVE SECTION**

*OPEN TO EVERYONE*

**Fresh flowers to be used unless otherwise stated.  
Exhibitors are encouraged to use eco-friendly materials where possible.  
With the exception of class DC5, any height is permitted.**

- DC1 An arrangement in a basket – *to fit in a display area of 20"x20"/51cmx51cm*
- DC2 A hand tied bouquet – *to fit in a display area of 18"x18"/46cmx46cm*
- DC3 An arrangement on the theme of "Lest We Forget" – *to fit in a display area of 15"x15"/38cmx38cm*
- DC4 An arrangement of 5 flowers – *to fit in a display area of 15"x15"/38cmx38cm*
- DC5 A miniature arrangement – *no larger than 4"/10cm overall*
- DC6 An arrangement of foliage & berries – without the use of oasis/floral foam – *to fit in a display area of 18"x18"/46cmx46cm*