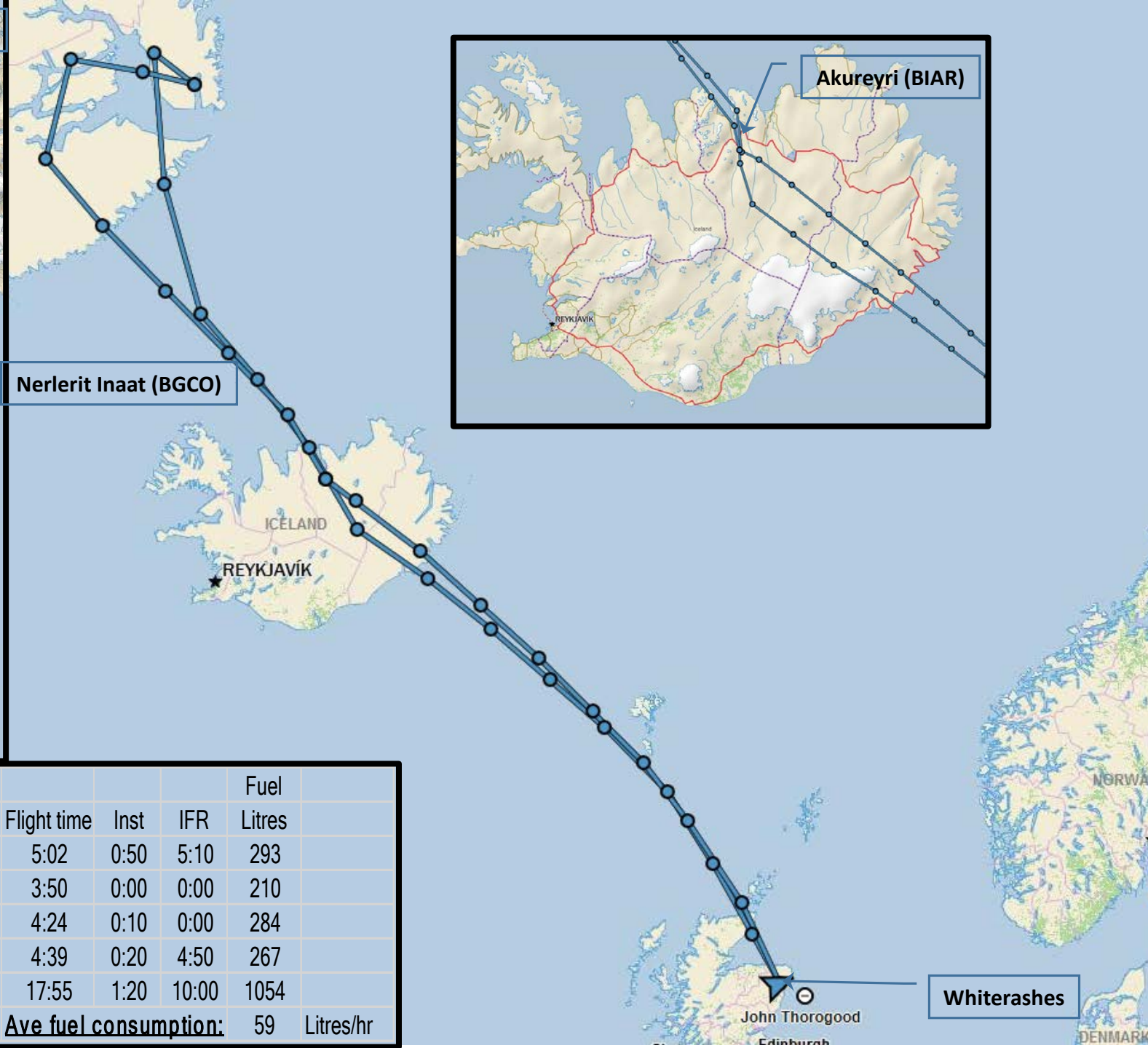
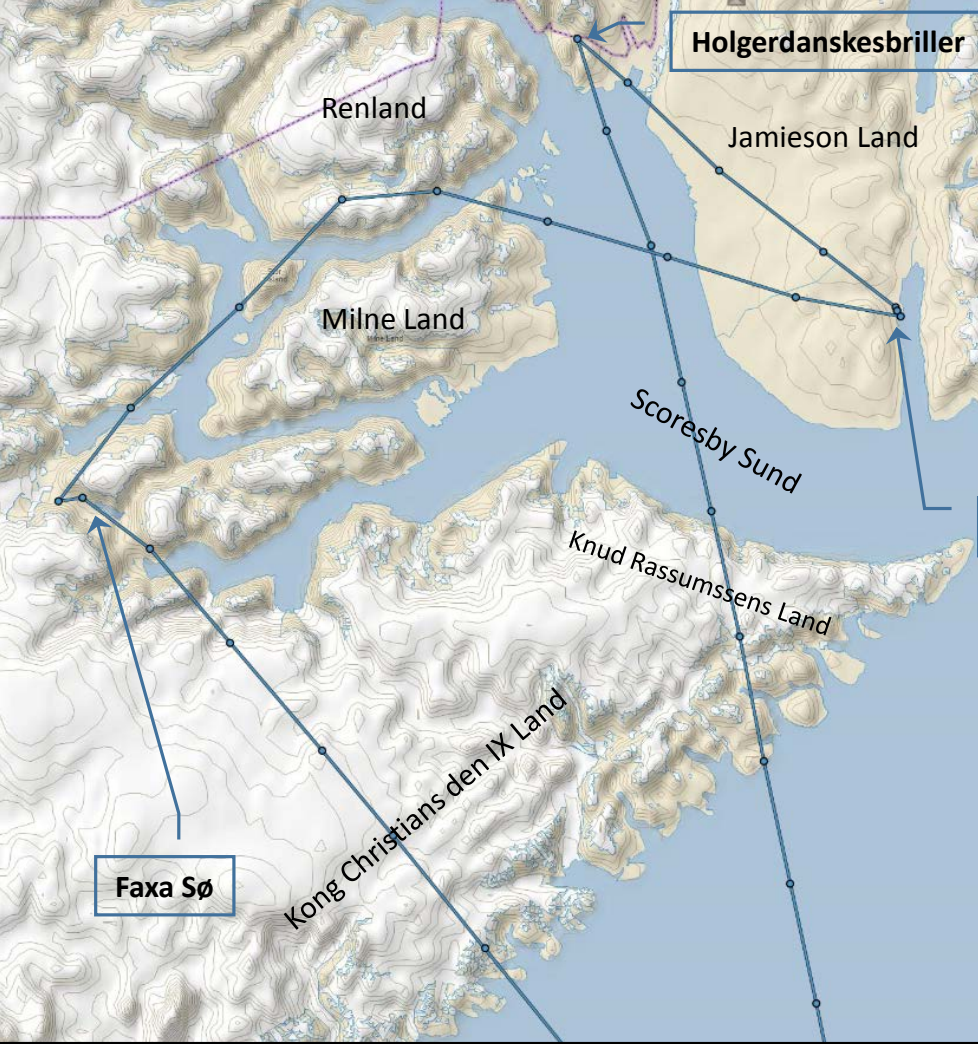


G-APFV to NE Greenland in  
support of Worksop College  
Expedition with Catalina G-PBYA

by John Thorogood



Crew Details		Route		Flight time / UTC						Fuel
Date	Pilot	Departure	Destination	Brakes off	Brakes on	Block time	Flight time	Inst	IFR	Litres
06-Jul	Thorogood	Whiterashes	Akureyri	5:55	11:05	5:10	5:02	0:50	5:10	293
06-Jul	Thorogood	Akureyri	Nerlerit Inaat	11:50	15:50	4:00	3:50	0:00	0:00	210
07-Jul	Thorogood	Nerlerit Inaat	Akureyri	9:30	14:05	4:35	4:24	0:10	0:00	284
08-Jul	Thorogood	Akureyri	Whiterashes	7:10	12:00	4:50	4:39	0:20	4:50	267
				<b>Totals:</b>		18:35	17:55	1:20	10:00	1054
<b>Ave fuel consumption:</b>										59 Litres/hr

John Thorogood  
Edinburgh

Whiterashes



Approaching the NE Greenland Coast at around 69° North



Glaciers and Tertiary volcanic plateaux of Kong Christian den IX Land and Steno Brae



View south west across the Skrænterne and plateau of Knud Rasmussens Land



View westwards along Volquart Boons Kyst



Synthetic vision display of approach to Sydkap across Scoresbysund



Hall Bredning looking towards Kløftbjerge, entrance to Nordvestfjord and Sydkap





View into Nordvestfjord across the Bjørneøer



Icebergs by Bjørnøyer and Kløftbjerge plateau behind



Holgerdanskessbriller Lake: Jamieson Land in the background



Holgerdanskebriller Lake: obviously "No Go" for the Catalina



Low pass over Holgerdanskebriller Lake: mushy, melting ice



Holgerdanskebriller Lake: a parting view with southern part of Stauning Alper behind



Short finals for Nerlerit Inaat (BGCO), aka Constable Pynt, 1,000m gravel



Nerlerit Inaat (BGCO) control tower, offices and staff accommodation





Nerlerit Inaat (BGCO), the NOTAM said “no fast rescue boat available due pack ice...”



Renland, Skillebugt to right from overhead the Bjørneøer



Westwards up Øfjord with Milne Land top left and Sorthamrene cliffs of Renland to right



Pinnacles of the north coast of Milne Land



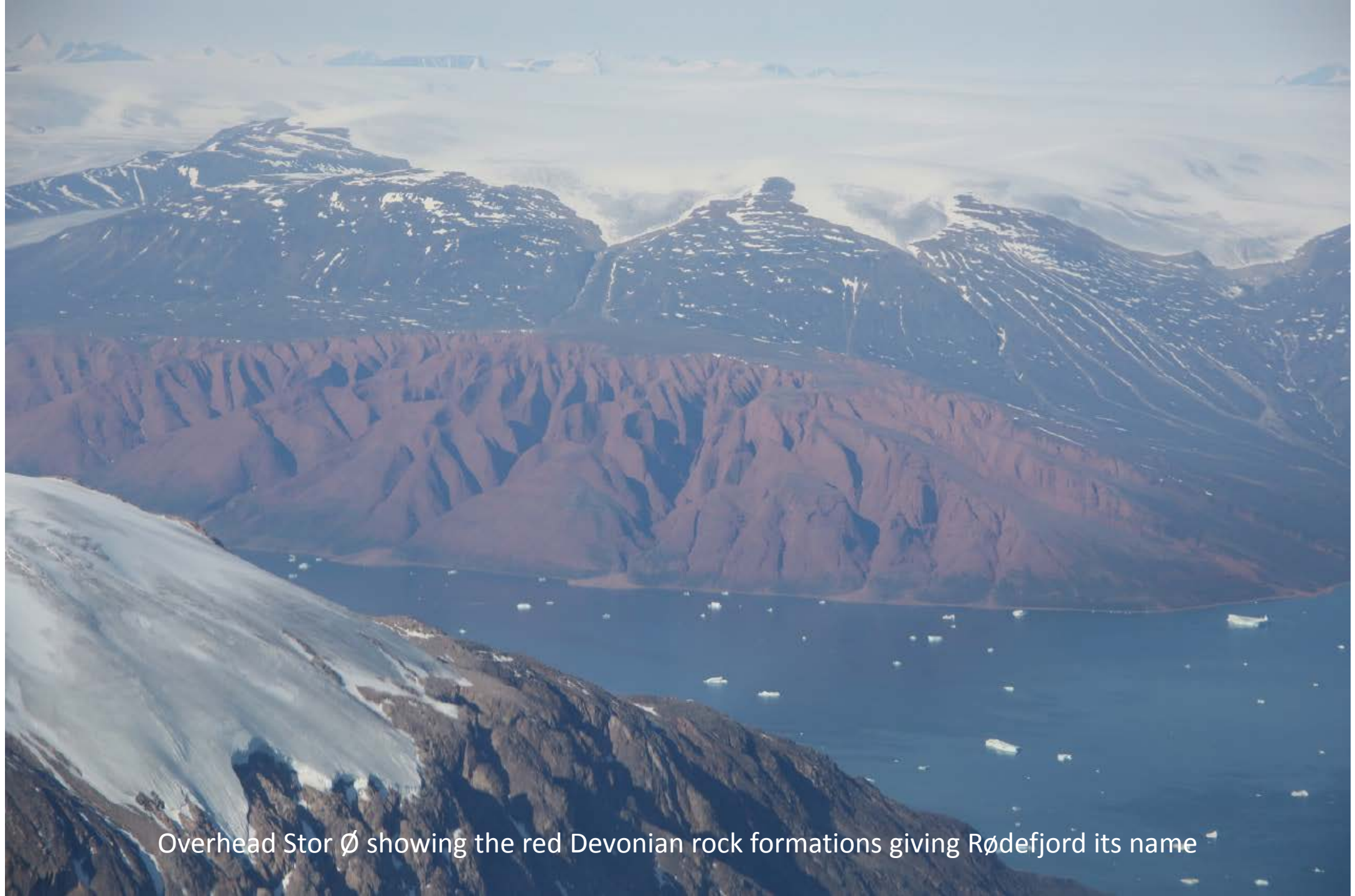
Spires of Grundtvigskirken of Renland with Bjørneøyer behind



Frozen lakes of Catalinadal, this might have been “Plan C”, but far too early in the season

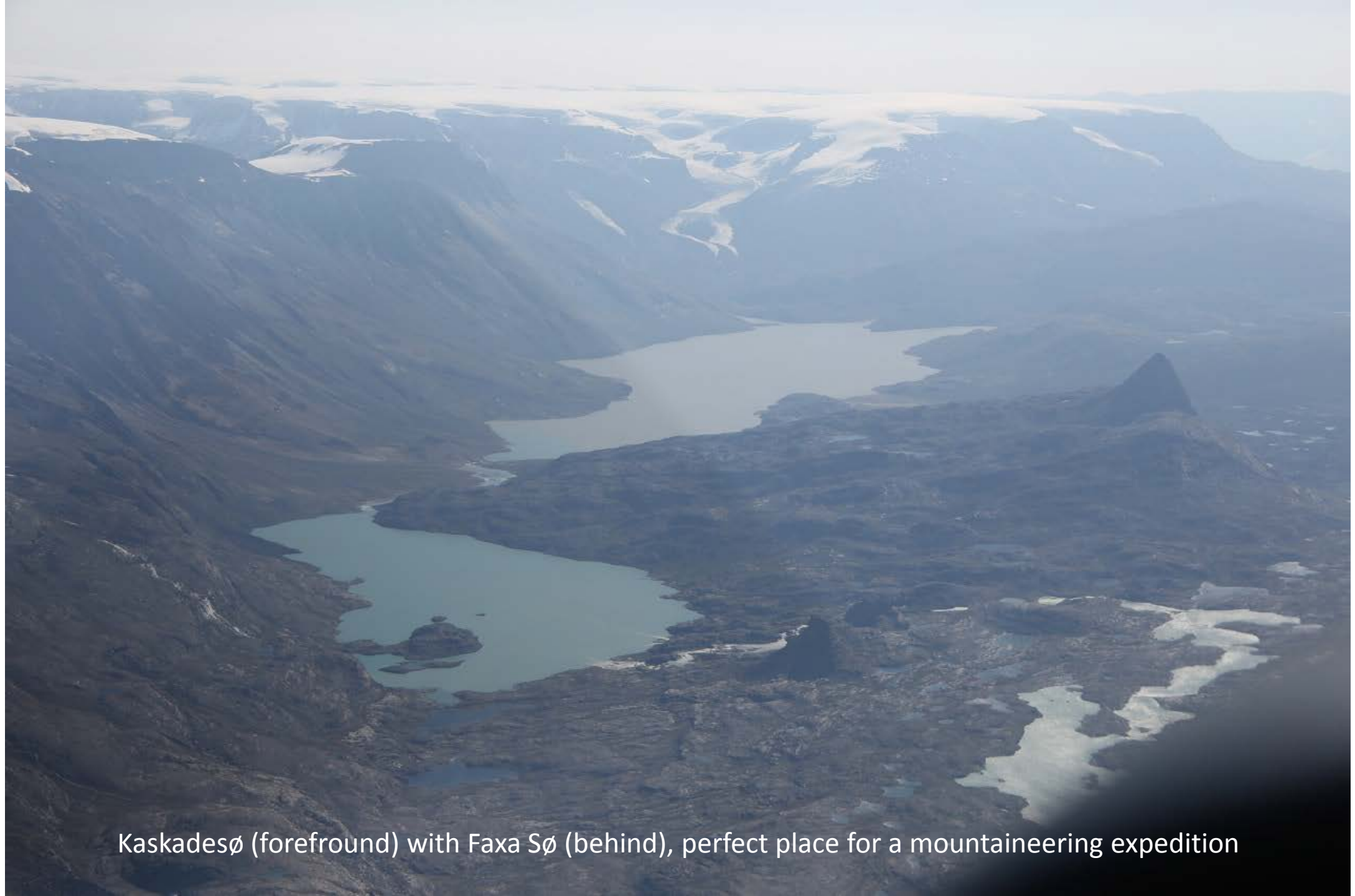


Heading SW to Faxe Sø, approaching Stor Ø



Overhead Stor ø showing the red Devonian rock formations giving Rødefjord its name





Kaskadesø (foreground) with Faxe Sø (behind), perfect place for a mountaineering expedition



Over Kaskade Sø, running in for a low pass over Faxe Sø



Faxa Sø: completely ice free and lots of room for a Catalina



Climbing away, looking south up Gåsegletscher



Heading south east, crossing the ice cap of Kong Christian den IX Land



Mountains and glaciers of Kong Christian den IX Land



Distant view of Einar Mikkelsens Fjeld



Coastal mountains inland from Kap Coster





Cloud break from the north into Akyreyri (BIAR) on the RNAV 18 approach for circle to land on 36



G-PBYA Miss Pickup on short finals at Akureyri



G-PBYA Miss Pickup taxiing in after a long leg from Stornoway



Reconnaissance completed