



# THE ALRESFORD ADVERTISER

## April / May 2026

Established since 1970

Dearest Readers

With spring bringing lighter evenings and new colour to the village, it feels like the perfect moment for us – your new editorial team – to say hello.



We're excited to help continue the great work behind the Advertiser. Our aim is simple: to celebrate local stories, share useful information, and keep our community connected.

As we settle in, we'd love your thoughts. What do you enjoy? What would you like more of? Any ideas or topics you think would benefit the village?

Your input helps to ensure it reflects the needs and interests of the community. By completing the short survey via the QR code below, you can help shape what you'd like to see in future editions.

Wishing you a bright and hopeful spring,

Becky, Gina and Sarah  
The Editorial Team



The Alresford Fete Organising Group  
invite you to our Summer event

# Picnic in the Park

**Free Entry**

**Saturday**  
13th June 2026  
12:00 PM - 4:00 PM

**Alresford Playing Field**  
Ford Lane  
CO7 8AT

Live music from 'Silence the Sirens' - Entertainment -  
Burgers and Hot Dogs - Bar - Ice Cream - Stalls -  
and much more!  
Bring your own picnics, blankets/chairs. Sorry, no dogs or glass.

## ALRESFORD CRAFT & FARMERS MARKET

Alresford Village Hall  
Ford Lane, Alresford CO7 8AT

**9am - 12 noon**

A variety of food and craft stalls

Refreshments available

Free admission

Free car park and disabled facilities

**4<sup>th</sup> April, 2<sup>nd</sup> May,**  
**6<sup>th</sup> June, 4<sup>th</sup> July,**  
**1<sup>st</sup> August, 5<sup>th</sup> September,**  
**3<sup>rd</sup> October, 7<sup>th</sup> November,**  
**5<sup>th</sup> December**

Please check our FB page for updated information



## WI Annual Quiz

Friday 17<sup>th</sup> April 2026

**Alresford Village Hall**

**Doors open at 7pm**  
**Starting at 7.30pm**

**Entrance £4.00**

**Teams of 6 per table**

**Bring your own**  
**drinks & nibbles**

**Our Quizmaster will be**  
**Chris Sanderson**

**To book a table please contact**  
**Allyson Salmon on 07742 918062**

## ALRESFORD VILLAGE HALL REGULAR GROUPS

### MONDAY

- Mindfulness Yoga: Monday mornings
- Alresford Indoor Carpet Bowls Club: Every Monday afternoon/evening

### TUESDAY

- Alresford Lunch Club: Every Tuesday morning and early afternoon
- 1st Alresford Scout Group (Beavers): Tuesday Teatime.
- Dog Training Classes: Tuesday evening.

### WEDNESDAY

- Tai Chi: Every Wednesday morning.
- Alresford Women's Guild: Every other Wednesday afternoon.
- Pilates: Every Wednesday evening

### THURSDAY

- Exercise Classes (Extend): Every Thursday morning
- Alresford Women's Institute: Second Thursday evening of the month

### FRIDAY

- Alresford Calligraphy Group/Art Club: Every Friday morning.
- Simply Singing: Every other Friday afternoon October to May
- Meditation Sound Bath, Mother & Baby Sound Bath: 4<sup>th</sup> Friday of the month

### SATURDAY

- Alresford Craft and Farmers Market: First Saturday morning of the month (February to December)
- Alresford Colne Rangers Football Club (using the Pavilion at the rear of the hall)

If more information is needed for any of these groups, please see [:https://e-voice.org.uk/alresfordvillagehall/](https://e-voice.org.uk/alresfordvillagehall/) or contact Russell Milburn on 01206 825739



## St Andrew's - not just for Sundays

### Friendship Circle 10:30-12:00

**1<sup>st</sup> and 3<sup>rd</sup> Monday**

Although we are a bereavement group, we welcome anyone who is lonely and is seeking company for a chat, coffee and cake.

### Memories 14:30 - 16:00

**2<sup>nd</sup> Monday**

Do you or anyone you know have memory problems? If so, you are very welcome to join us for a time of reminiscing and refreshment. If you are interested, please contact **Jeanette Downing** on **01206 825008**

### Tuesday Tots 10:30 - 12:00

**Weekly term-time**

Somewhere to bring your little ones to play and somewhere to meet other parents and carers.

### Knit and Natter 14:00 - 15:30

**Tuesday Fortnightly**

Bring your latest craft project or just come along and natter over tea and cake.

### Start-up Café 10:30 - 12:00

**2<sup>nd</sup> and 4<sup>th</sup> Wednesday**

The Church transforms into a café to meet old and new friends over tea, coffee and cake, borrow a book or jigsaw and take part in a quiz.

### Relax and Renew 13:45 - 15:00

**3<sup>rd</sup> Thursday**

Learn relaxation techniques and enjoy some refreshments.

### Ministry for Men 19:30 - 21:30

**4<sup>th</sup> Thursday**

*Meet at St Andrew's, Elmstead Green or Thorrington for a lift to the venue.* Put the world to rights over a drink and support our local pubs and other venues.

Tenpenny Villages Benefice of Alresford, Elmstead, Frating with Thorrington.

More details on our website [www.tenpennyvillages.uk](http://www.tenpennyvillages.uk)

## ALRESFORD BOWLS CLUB

**You are invited to join us to  
play carpet bowls**

**SESSIONS ARE HELD EVERY MONDAY  
2.00PM AND 7.00PM  
ALRESFORD VILLAGE HALL  
JUST COME ALONG**

**FREE TRIAL SESSIONS ARE AVAILABLE TO  
NEWCOMERS**

THEREAFTER THERE IS A £10 ANNUAL FEE AND  
£2 PER SESSION WHICH INCLUDES  
REFRESHMENTS

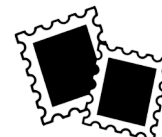
For further information contact  
Andrew Pyman on  
07393 381257



## CHRISTINE'S CHARITY BAG

Stamps are still being collected for Bone Cancer Research. They should be cut from envelopes with a half inch border. Please put them through the letter box or leave them by the back door.

Knitting is still needed. Wool, needles and patterns are available for anyone who wishes to contribute.



Collection or delivery of wool can be arranged.

Stamps and knitting can be delivered to 2 Coach Road as before or brought to any WI meeting.

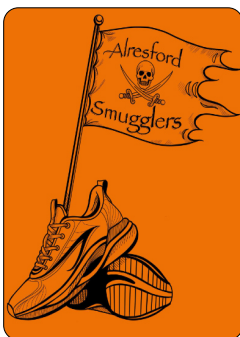


John Stimpson  
2 Coach Road  
01206 825068

## ALRESFORD SMUGGLERS

### Join the Smugglers 5K Social Run & Beginners Group!

Whether you're a seasoned runner or taking your very first steps, the Alresford Smugglers ve you with us. Our weekly 5K social run is relaxed, friendly, and all about enjoying the miles together — no pressure, no racing, just good company and a great atmosphere.



New to running? Our Beginners Group is the perfect place to start. Supportive leaders, gentle pacing, and a group that celebrates every achievement. You won't be left behind — we stick together.

Come along, meet new people, get moving, and be part of something fun and welcoming. **Everyone's invited. Everyone belongs. Best of all its free.**

**Beginners run every Thursday starts 6:15pm from Cockaynes lane and Station Rd Junction**

**5k Social run every Thursday starts 7pm from Cockaynes lane and Station Rd Junction**

## ALRESFORD WI

At our April meeting we will have Lizzie Potter talking about reflexology.

Our annual Quiz will be on Friday 17 th April, see further details on the front page.

The May meeting is our A.G.M. when the new committee is voted in. The A.G.M. will be followed by a talk from Andrew Watson on the Siege of Colchester.

**We meet on the second Thursday of each month in the Village Hall.**

**Meetings start at 7.30p.m. Visitors are always welcome.**

For further information please contact

Chris James 07977 495382  
Hilda Newbold 01206 823477

## SIMPLY SINGING

We meet every two weeks from 2pm to 4pm in the Village Hall, Ford Lane. CO7 8AT

It's just £2 as session which includes refreshments at half time.

**Dates so far for 2026 are:**

**10th & 24th April**

**8th & 22nd May**

For more information please contact:

Jeanette on **01206 825008** or Chris on **07484334698**

## 1<sup>st</sup> ALRESFORD BEAVERS SCOUT GROUP

**Beavers – 6 to 8 years**  
**Try new things. Make new friends.**



**Joining Beavers is just the beginning of your big adventure.**

Beavers meet on a Tuesday evening in term time and have a few spaces for any boys or girls age six or seven years who would like to join us.

Cubs and Scouts for older children meet at Elmstead Community Centre on a Wednesday evening.

Please contact [alresfordbeavers@outlook.com](mailto:alresfordbeavers@outlook.com) for further details of any of the sections within the Scout Group or to add younger children to our waiting list.

## ALRESFORD ANGLING ASSOCIATION



ANGLING TRUST



FISH LEGAL



Patron: Sir Bernard Jenkin MP

In the last letter I said “be careful what you wish for” and that was certainly a true statement as we had an abundance of rain, raising the lake levels to overflowing in some instances. Because of the cycle of feast and famine, regarding rainfall, the club is looking to move water from an overflowing lake to one that needs its level maintained. There have been a few suggested options which were turned down because of cost, but we have fixed on a trial of a solar powered pump to move water internally to try to keep the water levels balanced. The new season's fixture list will be posted on the web-site for 2026/2027. Can all members please keep a note of match days and where and when they are fished.

Despite the lakes freezing over, Kingfishers have survived and are once again visible as a bright Cobalt blue flash. Ducks, Geese and other water birds are pairing up for nesting. Please note where these nests are and avoid them when fishing or casting.

Most if the lakes have had their winter haircuts and the swims and accesses cleared. Over hanging and fallen trees have been cleared and brambles and other shrubs have been cut back. We are all shipshape for the start of a new season. Once again, any member who can spare a few hours on a Wednesday morning, at the Orchard lakes, to clear away dead and redundant undergrowth, your efforts would be greatly appreciated.

Now that the nights are drawing out and the hope of warmer weather approaches, catches will improve. All the lakes are now starting to show fish on the move.

**The club's AGM will on Friday 24th April at 8pm in the Village Hall. All members are welcome.**

As always, enjoy your fishing, stay safe and look out for one another

Tight Lines.  
Mike Day (Secretary)

## LUNCHEON CLUBS

**TUESDAYS at  
ALRESFORD VILLAGE HALL**

**12.30 - 2.30pm**

**FRIDAYS at  
BRIGHTLINGSEA COMMUNITY CENTRE**

**12.30 - 2.30pm**

2 Course Meal including Tea / Coffee - £7.00  
Transport, door to door, if needed - £4.00  
Raffle - £1.00

We welcome back all past members  
and newcomers.  
It is not too late to join us for these friendly meals.

For any further enquiries, please contact:

The Autumn Centre, 1 Osborne Court,  
Victoria Place, Brightlingsea CO7 0EB  
Or telephone 01206 303702

Or email [theautumncentre@outlook.com](mailto:theautumncentre@outlook.com)

## Do you run a club or society?

If you would like something included  
in the Alresford Advertiser, please email  
[alresfordadvertiser@gmail.com](mailto:alresfordadvertiser@gmail.com)



## MOBILE LIBRARY

The Mobile Library visits every: 3 weeks

**Alresford Village Hall**

**DAY: Thursday**  
**TIME: 11:55am to 12:25pm**

<b>09-Apr</b>	<b>30-Apr</b>	<b>21-May</b>	
11-Jun	2-Jul	23-Jul	
13-Aug	3-Sep	24-Sep	
15-Oct	05-Nov	26-Nov	17-Dec

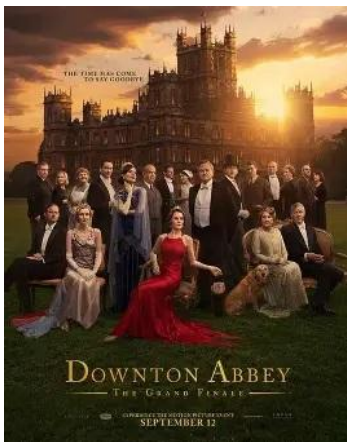
Essex County Council Libraries  
<https://libraries.essex.gov.uk/home>

## **Movie Night**

**at Alresford Village Hall**

**Friday 10<sup>th</sup> April 2026**

when we will be showing



**Downton Abbey: The Grand Finale (2025)** is the third and final film in the Downton Abbey franchise, concluding the story of the Crawley family and their estate.

**\*\*\*Film Starts at 7.30pm – doors open 7.00pm\*\*\***

This is a no cost - non ticket event but contributions towards the running of the evening and refreshments provided will be very welcome

**Alresford VH Management Committee**

## **Movie Night**

**at Alresford Village Hall**

**Friday 8<sup>th</sup> May 2026**

when we will be showing



**Johnny English Strikes Again** is a spy action comedy film

**\*\*\*Film Starts at 7.30pm – doors open 7.00pm\*\*\***

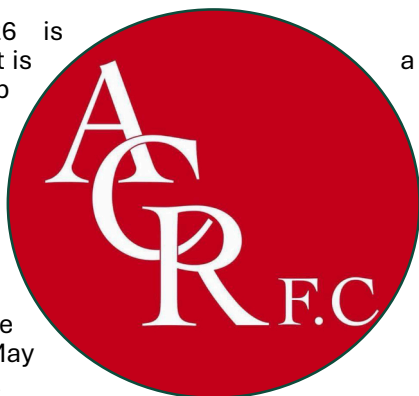
This is a no cost - non ticket event but contributions towards the running of the evening and refreshments provided will be very welcome

**Alresford VH Management Committee**

## ALRESFORD COLNE RANGERS FOOTBALL CLUB

### A look back and a look forward

The season 2025-26 is ending and for clubs it is crunch time. As a club you must decide if you can afford to continue. Have you got managers? have you got a committee to run the club? have you got funds? The decisions must be made by the end of May so its crystal ball time.



**We urgently need a chairperson and more committee members** as over the years the numbers have decreased and the workload increased. We have dedicated people within the club that cover the senior committee positions, but a Chair is now our priority.

**If there is anyone who is reading this who loves what is on offer in our village and now wants to give back by joining a club that needs help, then you will be most welcome. Please come and see us and talk about getting involved, you might just save the club from not existing.**

### So how has the season gone?

The Men's situation has been very disappointing with commitment being the root cause of much that is wrong, however the arrival of new management with a group of young and local players has given us hope for a brighter future.

The youth set up consisting of four age groups of which three play competitive football are all progressing nicely with the oldest age group now able to play 'open' football, which is being adult football. The under eight's are still playing friendly football.

On Sunday March 1st the Ladies made history for the club when they defeated higher league opposition Needham Market 1-0 in the League Plate Semi-Final. A terrific performance in front of a large crowd with nerves jangling and every player gave their all. The final will take place in May.

As mentioned earlier, next season needs to be prepared for and in March all pitches have been reseeded. Goal posts will need checking and nets etc replaced. End of season presentation events will need to be organised, and vast amounts of paperwork will need to be completed in readiness for next season.

We look forward to the Picnic in the Park on June 13th, it is a great community event with the Playing Field bulging with people all enjoying food, drink, and entertainment. ACRFC are incredibly happy to be involved and offer support, namely the Bar and equipment and manpower to enable this event to happen.

Brian Martin

The Ranger, Alresford Colne Rangers Football Club

<https://alresfordcolnerangersfc.co.uk/>

## ALRESFORD COLNE RANGERS F.C Annual Quiz & Raffle

The 2026 edition of the ACR FC Annual Quiz and Raffle took place in a packed Village Hall on a cold Friday evening in January. This year we were raising funds for the Chayse West Legacy and the football club. Before the quiz started Leah West kindly provided everyone with an update on the Chase West Legacy and the work they do.

As usual proceedings started off with a game of heads & tails and the winner kindly donated all his winnings to the charity.

Quizmaster Roy Openshaw was in the chair again with his usual mix of general knowledge and music questions. Just the 5 us were the eventual winners with 89 pts just three points ahead of runners up Tonys Angels. Cliff and Gill Wills picked up the prize on behalf of the winning team with Team Fury picking up the dreaded wooden spoon.



The raffle was a roaring success with lots of prizes donated by local businesses, The Chayse West Legacy, members of ACR FC as well as several from local Alresford villagers.

**Over £700 was raised on the evening for the charity so a big thank you to all who donated and attended and look forward to seeing everyone again next year.**

Nick Pace

## ALRESFORD BIKERS

### Let's get out there and ride!

By the time we all see this in print, I hope we have some more suitable weather to go riding in!

After last year's Spring was so warm and dry, this year has been a bit of a disappointment so plans are drifting a tad. No point organising a big ride out if it's going to rain is there? Meanwhile I see bikes out and about, getting MOT's and ready for the Summer, and packing in the miles. We have some nice rides coming up, getting some miles in and having some fun out on two wheels, and it seems to have been a long wait. Soon be time for more smiles doing the miles, like in the photo!



So, if you want to find out more, chew the fat with some bikers, talk bikes, and gain from our huge depth of experience, come along to our HQ, The Pointer Inn, where our hosts Neil and Sam always make us very welcome.

We meet on the second Friday of each month at 8pm, or, just turn up in the car park most Sunday mornings for a ride out leaving at 10am, we will be delighted to see you!

Al Gillard

## MEMORIES GROUP

Do you, or someone close to you, have Memory problems? If so, why not come and join us for an informal afternoon of socialising and reminiscence.

**We meet at the Hub at  
St Andrews Church**

**on the second Monday of the month  
from 2.30 - 4 pm**

You would be most welcome.

For further details please contact :  
Jeanette Downing on 01206 825008

## St Andrew's Church



In my teens, I lived a train ride from Wimbledon and when the tournament was on I used to try and grab a throwback ticket to get in. The deal was that you queued up and if someone was leaving the tournament you could get in!

On 1st July 1987, I managed to get into centre court. The 'Great' Jimmy Connors was crashing out and was down 6-1, 6-1, 4-1! Then something incredible happened and the swashbuckling Connors, whose back was to the wall, managed to find a way to win the match. It was like he caught light just when all hope was lost. It would make a decent film storyline!

A friend of mine, who is a gifted journalist and dramatist, explained the principles of writing good drama and that the storyline must have a moment of high drama and potential defeat before the turnaround and the resolution. As we get ready for the sporting drama of Wimbledon and the World Cup, we are so glad to be distracted from the profound tensions in the world, and we pray for all those caught up in conflict (particularly the vulnerable). But I also share with you the concept that Christians are called to be a people of hope because of the one who broke through the last barrier of death. The Easter Resurrection means that there is always hope. As great as Connors was, with his 109 titles, and as precious and unique the match that I saw there was, there is the bigger picture. Beyond World Cups, beyond wars, beyond death, we have one who has triumphed over all and that is why we have hope.

Finally I would like to add that hope is what got St Peter's congregation through the fire just over fifty years ago. Hope helped them to persevere whilst worshipping in the village hall and the Sunday after Easter we celebrate 50 years since the opening of St Andrews. There has been plenty of change with a new entrance, office and community hub room and the paint has only recently dried on the new loos. So out of the fire, a new beginning. Out of the new beginning a hope that has endured for 50 years - do drop in over for our anniversary weekend with teas served Saturday the 11th and a special 50th anniversary service 11am on the 12th (Palm Sunday on March the 29th will mark our 50th Palm Sunday and Bishop Guli will attend the end of the service!)

Every blessing and hope!

Rev Andrew Fordyce MBE

# He is Risen

Come and join us for our

6.30am Sunrise Service

11.00am Family Holy Communion

Easter Sunday

5th April

St Andrew's Church

[tenpennyvillages.uk](http://tenpennyvillages.uk)

## ST ANDREW'S CHURCH CONTACTS


Rector: Rev Andrew Fordyce - 01206 920848  
Email: [rector@tenpennyvillages.uk](mailto:rector@tenpennyvillages.uk)

Associated Priest: Rev Pauline Hart - 01206 826318  
Email: [assocpriest@tenpennyvillages.uk](mailto:assocpriest@tenpennyvillages.uk)

Churchwarden:  
Nick Berry - 01206 824496  
Email: [standrewswardens@tenpennyvillages.uk](mailto:standrewswardens@tenpennyvillages.uk)

Bookings for the Hub: Meg Burdus - 01206 820618  
Email: [admin@tenpennyvillages.uk](mailto:admin@tenpennyvillages.uk)

[www.tenpennyvillages.uk](http://www.tenpennyvillages.uk)

Find us on 

ParishChurchesofAlresfordElmsteadThorrington-  
TennpennyVillages

Information about our Services can be found on our  
notice sheet at <http://tenpennyvillages.uk>



## ALRESFORD VILLAGE HALL

### Annual General Meeting

Will be held in the Village Hall on  
Thursday 21 May 2026 at 7pm

This is your chance to review the past year's accounts and activities, elect the management committee, voice opinions, and volunteer to support our community village hall.

**Everyone is welcome, please do come along.**

## ALRESFORD PARISH COUNCIL CONTACT DETAILS

The Parish Office, The Pavilion, Ford Lane  
Alresford CO7 8AT

Council meetings are held at the Pavilion on the first Wednesday of every month at 7.30pm. Public and Press are welcome. Agenda & Approved Minutes on website

Website: [www.alresfordpcessex.uk/](http://www.alresfordpcessex.uk/)

Facebook: Alresford Parish Council (Parish Council only)/The Pavilion & Playing Field - Alresford Essex

Twitter: @alresfordessex

Chairman: Cllr Frank Belgrove - 01206 823739

Vice-Chairman: Cllr Ernie Osborne

Cllr Linda Belgrove

Cllr Simon Clark

Cllr Gary Scott

Cllr Ann Wiggins

Cllr Bina Swash

Cllr Julia Claremont-Brown

Cllr Courtney Muller

Cllr Kristen Doulai

District Council Tendring

District Councillor Ann Wiggins - 01206 825153

Email: [cllr.awiggins@tendringdc.gov.uk](mailto:cllr.awiggins@tendringdc.gov.uk)

District Councillor Gary Scott - 01206 820769

Email: [cllr.gscott@tendringdc.gov.uk](mailto:cllr.gscott@tendringdc.gov.uk)

County Council Essex

County Councillor Alan Goggin - 01206 308023

Email: [egog@btinternet.com](mailto:egog@btinternet.com)

Parish Clerk - The Proper Officer

Matt Cooke - 01206 615117 (Answerphone 24/7)

Email: [alresfordpc@outlook.com](mailto:alresfordpc@outlook.com)

Responsible Finance Officer & Assistant Clerk

Angela Baxter - 01206 615117 (Answerphone 24/7)

Email: [rfopcessex@outlook.com](mailto:rfopcessex@outlook.com)

## An Update from Cockaynes Wood Trust

The Cockaynes Wood Trust monthly work parties have concentrated on the lower part of the Heath area, clearing some of the larger birch scrub and bracken to open the area in the hope of helping the heather to spread over. This has revealed extensive digging by rabbits which have made some very large holes.

The Essex Wildlife Trust, a joint partner with us in managing the site, has arranged occasional work parties to work at the site. They have restarted in the Scrape area to reduce the tree scrub. Two work parties have been completed to date this year with the next one planned in February. CWT work parties cleared a lot of the gorse last autumn.



A number of mature trees have fallen in Villa Wood due to weather conditions / age / rot and have been dealt with where paths have been compromised. These trees have been dealt with by Roger Robson and Andrew Shields who are two of our licensed chainsaw operators. There is one smaller broken tree in Cockaynes Wood near the rear (north side) path which needs work.

It is not all work, of course. In December we did organise a Mince Pie and Coffee morning in the centre of the Reserve. We had quite a few people turn out for it who generously put a total of £95 in our donation box.



We are grateful to all the people who walk around the 55 acres of the Cockaynes community nature reserve who report things to us, many of whom take their dogs for a long walk over there. Not only are they a very good incident reporting team who tell Roger Robson of any site issues, they also litter pick.

One of these people recently sent Roger a photo of a very large water leak near the railway line. This was about 100 metres onto our site, through the main vehicle entrance. It turned out to be the main water supply service to Alresford and was repaired within hours by Affinity Water who were grateful for the early report.

**If you too would like to help in our constant battle against nature and prevent the site from being overtaken by it, then we would be very pleased to see you.** Please contact Andrew Barker and let him know of your willingness to get involved. We usually meet at 9am on the first Sunday in a month. Please contact Andrew by email on: [andrewbarker125@hotmail.co.uk](mailto:andrewbarker125@hotmail.co.uk)

Roger Robson,  
Chairman & Warden, Cockaynes Wood Trust

**Visit our facebook page or our website:**  
<https://cockaynes.org.uk/>

## ALRESFORD VILLAGE HALL

Charity Commission Number: 301233

Website: <https://e-voice.org.uk/alresfordvillagehall>

Facebook:

<https://www.facebook.com/Alresfordvillagehall/>



Email: [alresfordvillagehall@gmail.com](mailto:alresfordvillagehall@gmail.com)

Contact No: 07548 742796

### TRUSTEES UPDATE

An online calendar is available via the website to allow visibility of when the hall is available for hire. Bookings will still need to be made via email or telephone with a booking /security deposit now required to confirm the booking. Hirers are encouraged to pay deposit/fees using BACS and after the hire the deposit is quickly refunded assuming the hall is left as the contract of hire defines.

Please see the website for all news and updates regarding hire times, booking process and advice as to end of session times and clear up including vacating the hall.

### News Flash

A warm welcome to the new editors of the Alresford Advertiser, Becky, Gina, and Sarah.

We wish them well and thanks them for coming forward and volunteering their time in enabling this important part of our community to continue.

It looks like another Blood Donation session will be available in the hall in July. The last session was highly successful, and the NHS Blood & Transplant service are keen to continue this service in Alresford.

The Village Hall hosted the annual Rural Community Council Essex (RCCE) conference on 21st March, which was attended by numerous representatives from village halls and community centres across Essex. On the agenda were various presentations on interest to halls and our own Trustees Chris Sanderson gave a presentation on our installation of energy/cost saving measures such as Solar panels and water saving devices installed within our hall.

### The Annual General Meeting will be in the Village Hall on Thursday 21 May 2026, at 7pm

Trustees are costing new replacement chairs.

The yearly boiler service was completed in February and Trustees attended a Sunday morning clean where the Radiators were 'defluffed' and a deeper clean was conducted. The carpet was cleaned in March.

Hire continues to be positive with weekday regular hire slots being enquired after. Private one-off hires also are keeping the hall busy, and this of course puts the Trustees/cleaners under more pressure, especially with their time.

Simply Singing and Movie Night continue to be well attended with 30-40 attending. The Simply Singing is an afternoon with singers performing on the screen with words to the songs at the bottom of the screen. Those who want to sing along do, and those who just enjoy listening and enjoying old footage of bygone artists without singing can without any need to feel uncomfortable.

### COME ALONG, GIVE IT A TRY AND ENJOY A CUP OF TEA.

### HALL /PAVILION HIRE

The Village Hall/Pavilion/Bar is available for hire individually or as a package. All enquiries should be via: [alresfordvillagehall@gmail.com](mailto:alresfordvillagehall@gmail.com)



### HEALTH AND SAFETY/FIRST AID

The village hall Health and Safety File positioned in the hall foyer area. Included in the policy is the Accident Book and the Trustees encourage all hall users to familiarise themselves with this policy. AVHMC provide a First Aid kit for use of Hires located in the kitchen. Respect for this kit would be appreciated. Regular users/clubs should also provide their own First Aid kit.

It is important that all users of the Hall make themselves aware of the emergency procedure in the event of a fire. There are notices placed in the hall and within the Health and Safety File.

Russell Milburn, Chair AVHMC  
01206 825739

# Alresford Parish Council - Chairman's Report

April/May 2026

## Highways/Parking

The Essex Highways kerbstone repair works continue in the following roads: Coppice Road, Heath Road, Ash Road, Chestnut Road, Orchard Road, Laxton Road, Cox Road, Worcester Crescent, Oaktree Road and Bramley Road.

The durability of the works have been questioned as the specifications used do not include seating new kerbstones in deep excavated recesses, rather the existing kerbstones have been replaced in position on mortar beds. It is assumed that the cost of replacing kerbstones with new materials is the main factor driving this change of specification but in the long term it might result in further maintenance costs.

The Parish Council voted to deploy our handyman to carry out path clearance along the B1027 as the roadside footpath had narrowed due to vegetation growth and soil spreading across it. The feedback from residents has been pleasing with many approaches to the Council thanking the handyman for his diligence in carrying out these works to a high standard. Flooding and mud on our village roads network has been an issue due to the extremes of weather and appropriate authorities have been contacted on a number of occasions. Clearly many surface water drainage systems simply cannot cope and will require upgrading.

Meetings have been held with residents who live near to the Primary School as School related parking issues are causing significant safety problems. Some drivers are parking on and around the junction of Ford Land and Church Road and others are even mounting the pavement and grass areas to park. The Parish Council is supporting an extension of the yellow zig zag lines that restrict parking with school-run hours. In addition as the school day sometimes involves after school sports there will be an application to increase the no parking times.

In Station Road there are occasional obstructions caused by commuter parking and a range of measures have been considered by the Council, under advice from consultants. Complaints were received by the Council regarding delays to emergency service vehicles caused by parking problems and these complaints have been a concern. Should restrictions on parking be implemented in Station Road the displacement problem to side streets has to be considered. There is no perfect solution to the problem but recent actions by the village PCSO and North Essex Parking Partnership Officers have slightly improved matters.

## Planning and Development

Tendring District Council is responsible for planning and development in our area. As outlined in my report in the previous issue of the Advertiser between 2025 and 2042 around 19,500 new homes are being planned for the Tendring area (includes existing allocations and windfall sites). This figure already includes approximately 4,525 homes planned for Clacton under the current Local Plan. Tendring District Council has made it clear in their draft Local Plan that Alresford has been earmarked for more housing, potentially 140 new homes. Alresford Parish Council has prepared a response statement on the whole of Tendring District Council's revised local plan, the section we have prepared on Alresford is as follows:

"ALRESFORD Land to the east of Cockaynes Lane has been earmarked for development, however previous applications for housing have been refused by the Planning Inspectorate, with the reason being that the community has already absorbed substantial housing. The impact on the

environment cannot be overlooked and the lack of open spaces for recreation has been highlighted many times. The village primary school is often over-subscribed and some residents have had to endure excessive school run distances in order to secure a school placement for their children. Further, in spite of our recent increase in properties and population we still have no NHS Doctors or Dentists in the area that are

accepting new residents. It is acknowledged that the site suggested for 140 homes is the only potential area for development in the Alresford area. However, the Parish Council's view is that further development in Alresford on the scale suggested is not sustainable without full commitment to the Infrastructure Delivery Plan set out on Page 86 of the Planning Policy and Local Plan Committee Report dated 22 January 2026."

## Staffing and Councillor updates

Interviews have taken place for a part-time office assistant. The interview panel had a very difficult task as all applicants were of an exceptional standard. A decision was finally reached and an appointment has been made for this support role. During the interviews one candidate, a younger person, with limited office experience, was felt to have such great potential that research is being carried out to arrange her employment as well under an apprenticeship grant scheme and so it may be the case that two of the five applicants can have employment and benefit the community.

A new Councillor has been co-opted to join the Council following a casual vacancy occurring. The new Councillor is Keith Lawrie from Wivenhoe Road. Changes to the Planning Committee Chairmanship have been approved by full Council. After serving as Chair of the Committee for sixteen years, Councillor Ernie Osborne is stepping aside from that role and Councillor Simon Clark has been voted-in as Planning Committee Chairman.

## Anti-social behaviour

Anti-social behaviour can be evident in a number of ways and not clearing up after a dog is certainly anti-social. The majority of dog walkers in Alresford do carry waste bags and would not dream of not clearing up after their pet. There is a minority though that make life unpleasant for others and even in the centre of the village there is evidence of dog fouling. The Council has been approached by a number of residents who have reported dog fouling in their area and our PCSO is fully aware of the problem and will act on information received. Whilst on the subject of dogs new legislation (brought in on the 18th of March) means that dog owners who allow their dogs to attack or threaten livestock can face significant fines.

## Homeless Persons

It is worrying to see homeless persons sleeping rough in the countryside around the village. There are a number of rough sleepers that we are aware of and possibly more that have not been directly brought to our attention. The Parish Council has limited powers regarding these matters and so we have been referring homeless persons to the appropriate authorities and charities. If those who use field footpaths encounter any unauthorised encampments we recommend contact is made with the Parish Council so we can pass on location details to our appropriate contacts and landowners.

**The Parish Council is very grateful for the support it receives from so many in the village and for the amazing volunteers that make Alresford a very special village.**



Cllr Frank Belgrove, Chairman Alresford Parish Council

# Alresford Neighbourhood Policing: December 2025 to February 2026

## December 2025 to January 2026

### **RECORDED CRIMES: 20**

**CRIME TYPES:** Assault without injury X2- Criminal damage-domestic X2- Drugs X2- Harassment without violence- Other x 3- Sudden Death- Theft of motor vehicle- Theft from motor vehicle- Threats- Welfare/Safety x5

### **INCIDENTS RECORDED: 29**

**TYPES REPORTED:** Abandoned 999 x3- Assist other agency- Civil dispute- Disturbance x 3- Domestic x2- Drink drive- Drugs- Harassment- Information x3- Other x2- RTC with injuries- Sudden death- Suspects on premises- Theft of vehicle- Vehicle insecure- Welfare x6

## February 2026

### **RECORDED CRIMES:12**

**CRIME TYPES:** Bail Breach X3- Criminal damage- Harassment- Other X2- Stalking x2 - Theft fom Shops x3

### **INCIDENTS RECORDED:18**

**TYPES REPORTED:** Assist other agency- Domestic x7- Information In x5- Other x2- RTC Sus Circumstances- Suspicious Premises

### **PARKING TICKETS**

4 X CPI's (considerate parking incentive) have been given this month.

Please do not block footpaths with your vehicle. Footpaths are for pedestrians. Please bear in mind those with mobility issues and push chairs with young children.

### **Please Park considerately.**

### **TRUCAM (SPEEDGUN)**

2 (One hour) sessions were conducted this month in the village.

8 reported for the offence- Top speed 48mph.  
13 reported for the offence- Top speed 38mph.

Trucam will be deployed regularly in the village. The speed signs are clear and larger on entering both ends of Wivenhoe Road. So, there is no excuse. It is your responsibility to drive with due care and attention.

### **Please drive safely All lives matter.**

### **THEFT OF MILK**

There has been a few spates of theft of milk from resident's doorsteps.

If anyone has any information or CCTV/doorbell footage of those involved, including the car registration of the vehicle they were in.

Please let me know or ring 101 and the controller will update the information.

For those who have milk delivered, please consider asking the milkman to put it in a safe place out of sight, or get a small box, container that the milk can be put inside. Theft of milk is a regular occurrence in many villages.

### **FRAUD/SCAM**

There has been a white van going around Essex advising residents and business owners they are doing work in the area, in the form of road surfacing and pothole repair.

They **Do Not** work for the council.

They offer to do an odd job for the resident/business owner at a silly price as a favour to using left over materials, of course when the work is done that amount jumps into the thousands and they get very unpleasant if you refuse.

Please **DO NOT** agree to any work being done via a phone call, or cold caller. They are very clever with their techniques.

For any work you need doing and a reputable company, go online to [Checkatrade.com](http://Checkatrade.com)

### **Gentle Reminder**

### **E-SCOOTERS**

Personal E-scooters are illegal to ride on the public highway.

Shops do sell them but fail to tell you they **can only be ridden on private land.**

### **Please be reminded of the following Legal position**

Electrically powered scooters are classed as a "powered transporter" which are a type of mechanically propelled vehicle. This means the rules that apply to other mechanically propelled vehicles also apply to e-scooters. This includes the requirement that the vehicle is approved by the Vehicle Certification Agency for its construction and use for transport on the public highway. Currently e-scooters do not have type approval, which means they cannot be insured, which means they cannot be used legally in a public place.

**Anyone found using a Personal E-scooter in public will have it seized under section 59 or section 165 of the road traffic act 1988.**

**For a section165 - If you do not have a valid driving licence, you can be reported for the offence, which will land you in court.**

### **INTELLIGENCE**

A vast amount of criminal intelligence has been gained this month.

### **DRIVING**

Check that lights are working before a journey.

If weather/visibility is bad, i.e. rain, fog, overcast- make sure you put your full lights on, this makes you more visible and safer on the road.

Many vehicles are seen driving in bad conditions with no lights on, or just side lights. This makes you less visible and more likely to have an accident.

It is also a legal requirement to keep your number plates clean, so they are clearly visible and not obscured with dirt or mud.

### **WHO TO REPORT TO FOR PARKING ISSUES/ VEHICLES**

#### **DVLA:**

[Report an untaxed vehicle - GOV.UK \(www.gov.uk\)](http://www.gov.uk)

Deal with Vehicles with No MOT OR TAX on the public highway. DVLA can remove them.

**Police** will intervene when the vehicle is being driven with a fixed penalty notice.

#### **Reporting dangerous / illegal parking:**

<https://parkingpartnership.org/enforcement-requests/>

(Take 2 photos of said vehicle to supply online)

#### **PARKING SERVICES:**

[parking@tendringdc.gov.uk](mailto:parking@tendringdc.gov.uk) or 01255 686969

Police will intervene if the vehicle is a danger to the highway i.e. a complete block likely to cause an accident, where other vehicles cannot pass.

### **SUSPICIOUS CIRCUMSTANCES**

If you see anything that does not look right, report it. Try and get as much information as you can, including registration numbers, which are key to a lot of activity. The more you have, the more chance we have of a positive investigation, with results.

## REPORTING INCIDENTS THE CORRECT WAY

It is vital that incidents are reported at the time of the incident so that the right team can be assigned with a better chance of progress. Please **do not** email or ring the PSCO to report incidents.

To report an incident please ring 101 or for Emergency 999

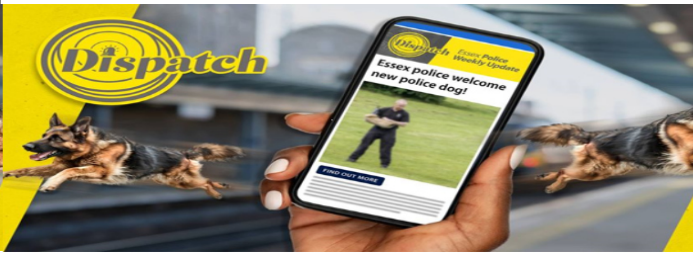
Or report it online at:

<https://www.essex.police.uk/do-it-online/report-a-crime/>

For anything else email your local PCSO:

[Julia.brandon@essex.police.uk](mailto:Julia.brandon@essex.police.uk)

## DISPATCH



Essex Police are offering more ways of keeping up to date with news from the **Tendring district** through their weekly e-newsletter, called Dispatch – **Tendring Edition**.

Published every Wednesday, this local edition of Dispatch will focus on our community and what's been happening. There'll be crime prevention advice relevant to the area, as well as information about upcoming community events, local policing news and more.

Dispatch is a digital newsletter which means once you sign up, it's sent directly to your email inbox.

It's completely free and you can unsubscribe at any time.

Sign up today and stay up to date with how our officers, staff and volunteers are helping people in Tendring, keeping you safe and catching criminals.

**Visit:** <https://www.essex.police.uk/police-forces/essex-police/areas/essex-police/au/about-us/dispatch/>

**Select the Tendring edition for your local news or scan the QR code!**



Scan QR Code

[www.essex.police.uk/dispatch](http://www.essex.police.uk/dispatch)

## ALRESFORD CRAFT & FARMER'S MARKET

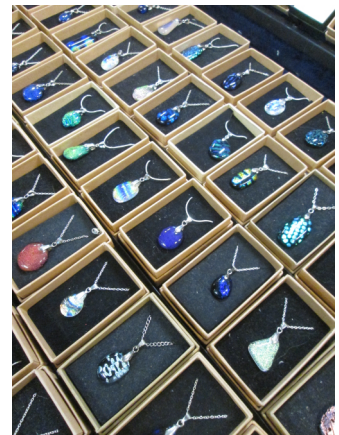
**Saturday 4th April**  
**Saturday 2nd May**  
**Saturday 6th June**

**Alresford Village hall**  
**9am - 12 noon**

Hosting a range of local makers and producers and a cafe.

The market runs on the first Saturday of the month February to December.

**Free entry**  
Disabled facilities available.



# Amore Beauty Lounge

*About Amore Beauty*

With 20 years of experience in the beauty industry, I am dedicated to delivering exceptional treatments tailored to enhance your natural beauty and confidence. I specialize in advanced Facials like Micro-needling, Carbon Facials and Hydro Facials, designed to rejuvenate and restore your skin, professional laser hair removal for long-lasting smoothness, Tattoo Removal, LVL lash lifts to beautifully enhance your natural lashes, and expertly shaped HD brows to frame your face perfectly. My services also include precision waxing and BIAB (Builder in a Bottle) nails for strong, flawless finishes, along with a wide range of additional treatments to meet all your beauty needs. Combining expertise, premium products, and a passion for client care, I pride myself on creating a welcoming environment where every client leaves feeling refreshed, confident, and radiant.

**BEAUTY SALON**

**NOW OPEN**

**IN ALRESFORD**

**CO7 8FT**

**07792158438**

CALL / MESSAGE TO BOOK!  
BOOK ONLINE VIA INSTAGRAM  
OR FACEBOOK  
@AMOREBEAUTYLOUNGE28

OFFERING 10% OFF  
OF YOUR FIRST  
TREATMENT  
WITH CODE 10OFF

Gaddesby

# The KITCHEN & BATHROOM Store




Our family run business, established in 2009 is built on customer satisfaction. We offer a comprehensive design, full installation and complete after sales service.

Visit our new showroom at **59 Station Road, Alresford CO7 8BU**

Call: 01206 511707 | Email: [showroom@thekbs.co.uk](mailto:showroom@thekbs.co.uk)  
 Visit: [www.thekitchenandbathroomstore.co.uk](http://www.thekitchenandbathroomstore.co.uk)








**Sunnymead Farm**  
WIVENHOE - ESSEX

Home grown, high welfare, outdoor reared:  
**Water Buffalo / Pork / Lamb / Mutton / Occasional Beef**

Chickens- point of lay hens and hatching eggs

**SHOP Open Saturdays 9-12pm, OR by pre booking**

Roasts, Bacon, Gammon, Steaks, Mince, Diced, Burgers, Sausages, Slow Cooking bits etc.  
 WHOLE or HALF; Butchered/unbutchered Pork & Lamb

**Taking Easter Orders-  
 LAMB / MUTTON / BUFFALO / PORK etc**

Sunnymead farm, Alresford Road, Wivenhoe, CO7 9JZ.

**Please contact Emily for more information on:  
 07817404362**

Follow us on Instagram or Facebook to keep up to date with the animals and special offers

**[www.sunnymeadfarm.org](http://www.sunnymeadfarm.org)**



# Wyvern WOOD

Book an adventure now  
[wyvernwood.co.uk](http://wyvernwood.co.uk)

## ALRESFORD VILLAGE SHOP

Colchester Main Road  
01206 828169

Extended Opening Hours:

Monday - Saturday: 5.00am- 9.00pm

Sunday: 6.00am - 8.00pm

New, more variety stock available including a wide range of beers, wines, spirits, groceries, confectionery, soft drinks etc.

Hot food: sausage rolls & pasties

**LOOK OUT FOR OUT SPECIAL OFFERS**

MyHermes Parcel Label Printing, Send & Return Service also Collection Point Printing Service & Payment Facility available in Store

Agents for Danes Launderers & Dry Cleaners

Cash Machine

Newspaper Delivery

Customer Car Park



[www.simplyhaberdashery.com](http://www.simplyhaberdashery.com)

Check out our vast range of products and low prices

Fabrics, quilting accessories, Braids & trimmings, buttons, Cords, Elastics, Fasteners, Sewing & mending accessories, Sewing machine accessories, Threads, Velcro, Ribbons, Zips, Tapes and much more....

**Free delivery  
or shipping!!**



01206 581177

[info@simplyhaberdashery.com](mailto:info@simplyhaberdashery.com)

Paypal and all major credit & debit cards accepted

## Direct Animal Feeds

01206 827035

**OPEN TO THE PUBLIC**

The complete range of animal feeds, bedding and accessories for

Horses • Dogs • Cats • Small Pets • Poultry

**Opening:**

Mon - Fri: 9am - 5pm

Sat: 9am - 4pm

Local delivery available

**Email:** [directanimalfeeds6@gmail.com](mailto:directanimalfeeds6@gmail.com)

**Maggie:** 07885082281

Unit 3, Heath Farm  
Cockaynes Lane  
Alresford  
C07 8DA



*The Company You Can Count On*

Since 1981, Abacus Shutters has provided London and the Home Counties with a wide variety of fire and security roller shutters, doors, grilles, gates and barriers.



Whether it's residential, commercial or industrial, whether your concern is security or fire safety, Abacus Shutters has got you covered. For more details, get in touch with our friendly staff!

Abacus Shutters Ltd.

E-mail: [sales@abacusshutters.co.uk](mailto:sales@abacusshutters.co.uk)

Tel. +44 (0)845 644 1225

OOH Tel. +44 (0)7989 600 675

Website: [www.abacusshutters.co.uk](http://www.abacusshutters.co.uk)



## Blue Onion Catering

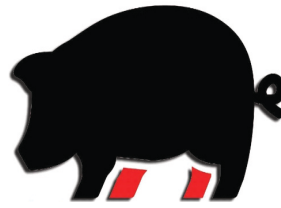
FREE delivery in local area

- \* All occasions catered for weddings, funerals etc
- \* Quality buffets & homemade dessert
- \* Delivered to your venue or home
- \* Afternoon teas delivered to your venue



01255 861617  
07738 616816 or 07795 441635

[www.blueonion-catering.co.uk](http://www.blueonion-catering.co.uk)  
[blueonioncatering@hotmail.com](mailto:blueonioncatering@hotmail.com)



## BECKY'S BUTCHERS

Family Run Butchers / Local Delivery Service

Quality Meat / Shop in store or online

07720833207  
[beckysbutchers@gmail.com](mailto:beckysbutchers@gmail.com)  
[beckysbutchers.co.uk](http://beckysbutchers.co.uk)

Badley Hall Farm, Great Bromley,  
Colchester, Essex CO7 7UU

**\*\*NEW OPENING HOURS\*\***

Visit our shop! Tuesday, Wednesday,  
Thursday, Friday and Saturday  
9am - 4pm

Local Beef, Lamb, Pork, Chicken and Game

Award Winning Sausages

Handmade Pies & Pasties

BBQ Meats / Frozen Fish

Eggs, Jams and Chutneys

Christmas Turkeys and much more...

MARK  
BRUMPTON  
TREE SERVICES



### TREE SURGEON

Reshaping  
Reducing  
Surgery Work  
and Clearance

### FULL INSURANCE

For Free Estimate and Advice

TELEPHONE:  
01206 825498  
Or 07885749934

Roxburgh  
Colchester Main Road  
Alresford  
CO7 8DG



Sales, Servicing, Repairs and Hire of  
Garden Machinery and Equipment



Ride on Mowers - Walk Behind Mowers - Hedge  
Trimmers - Chainsaws - Strimmers - Lawn  
Scarifiers - Shredders - Rotavators



Unit 1, Frating Hall Farm, Church Road, Frating,  
Colchester CO7 7HD

Telephone: 01206 250990 / 07860 411024

Website: [www.gbfarmsservices.co.uk](http://www.gbfarmsservices.co.uk)

Email: [office@gbfarmsservices.co.uk](mailto:office@gbfarmsservices.co.uk)

**ALRESFORD POST OFFICE & CONVENIENCE STORE**  
 55 Station Road, Alresford  
 Essex, CO7 8BX

**Opening Times:**  
 Monday - Saturday 8am - 7pm  
 Sunday 8am - 4pm

**FREE BANKING SERVICES**

Cash withdrawals, cash and cheques deposits for the following Banks: Barclays, Halifax, HSBC, First Direct, M & S Bank, Lloyds, NatWest, Smile, Santander, The Co-op Bank, TSB, Royal Bank of Scotland, Cahoot, Bank of Ireland, Clydesdale Bank, Yorkshire Bank, CAF Bank

Cash withdrawals ONLY: Nationwide

**DON'T FORGET....Your local Post Office offers many other services including:**

**'One4all' multi-store cards**

Available now  
**amazon hub**  
 Buy on Amazon, pick up here

**Amazon Returns/ Customer Drop Off Service**

**THE NATIONAL LOTTERY**

# Happy Soles

by Holly

**Professional Foot Care  
 Treatment & Advice in the  
 Comfort of Your Own Home**

- ✓ Nail Cut and File
- ✓ Fungal Nails
- ✓ Corn Removal
- ✓ Ingrowing Toenails
- ✓ Thickened Nails
- ✓ Cracked Heels
- ✓ Callus Reduction
- ✓ Verrucas
- ✓ Athletes Foot
- ✓ Diabetic Footcare

**Book an appointment Today  
 Happy Feet Happy You!**

**07895 197 577**  
 holly@happysoles.uk

Registered Health Foot Practitioner: Holly O'Toole DipFH MCFHP MAFHP

**Your local solution for fully fitted  
 blinds & shutters**

We offer a vast range of quality products to suit your needs.

With over 20 years experience in the trade, our installations are to the highest standard.

★★★★★  
 Rated Excellent On:  
**Google**  
**facebook**  
**Checkatrade**

Shutters  
 Rollers  
 Verticals  
 Romans  
 Perfect Fit  
 Venetians  
 Intu  
 Day & Night  
 Pleated  
 Skylight  
 Motorisation  
 VS2 Slide

**Call Us Today For Your  
 FREE QUOTATION**

**Tendring**  
 Blinds & Shutters  
**01255 474241**  
 www.tendringblinds.co.uk

## I. BLANCHETTE PLUMBING AND HEATING

Bathroom Installations  
 Ceramic Tiling  
 All Domestic Plumbing  
 Central Heating Systems  
 Boiler Upgrades  
 Boiler Maintenance Repairs  
 Power Flushing  
 Under Floor Heating  
 Pressurised Water Systems

Established 30 years  
 Reliable and Friendly Service

**Tel: 01206 827464**  
**Mobile: 07967 533 314**  
**GASsafe reg no: 64249**  
**ian.blanchette@talk21.com**



**Garden and General  
Maintenance  
Services**

**Ryan Walker**  
**01206 824080**  
**07887 746399**



**M.D. Spackman Building Services**

*Brickwork~Groundwork~Extensions  
Fencing~Paving~Maintenance  
Certified Digger Driver / Dumper Driver*

*CSCS Registered*

Call Mark on 07811 869316 or 01206 827995  
Email: thespackmanhouse@btinternet.com

Alresford, Colchester, Essex



**FOOT CLINIC**

Trish Parker MAFHP MCFHP MINA • 20 Years Experience  
**Foot Practitioner of Year Winner 2019**

CONSULTATIONS • CLINIC OPEN IN BRIGHTLINGSEA  
5 DAYS A WEEK • DIABETIC PATIENTS WELCOME

PROFESSIONAL TREATMENTS COVERING ALL FOOT DISORDERS  
Removal of Corns • Hard Skin • Ingrown Toenails • Infections  
Fungal Infections • Athlete's Foot • Thickened/Deformed Nails  
Verruca's • Cracked and Painful Heels • Fallen Arches

 Call Trish Now To Book  
An Appointment **Prices From Only £27**

**01206 307884 . 07808 938563**  
Clinic Held at: 66 Seaview Road, Brightlingsea



**ARE YOUR LOCKS BEHAVING BADLY?**

We Value Old Fashioned Customer Service  
A Local Trusted Family Business Since 1989

-  Specialist in UPVC & Wooden Doors
-  No Call Out Charge
-  No Fix No Fee
-  All Work Fully Guaranteed
-  10% Senior Citizen Discount



For More Advice & Help Call Christopher:  
**07772 111 222**  
www.christopherthelocksmith.co.uk



Builder


**Free Estimates**

**EXTENSIONS**  
**LOFT CONVERSIONS**

**NEW KITCHEN FITS**  
**NEW BATHROOM FITS**  
**GARAGE CONVERSIONS**

**07899045847**  
**01206824752**

**stuartjohnbush@gmx.co.uk**




**Locksmiths and Security Services**  
Tel: 01206 481763  
mselocksmiths@btinternet.com

*Semi-Retired professional locksmith now based in Alresford, Colchester offering a truly local, personal and convenient low-cost locksmithing service to Alresford, Thorrington, Wivenhoe, Brightlingsea, Frating, Great Bentley, Elmstead and surrounding village residents. We service, repair, replace, supply, fit, adjust or exchange, Domestic or Commercial*

- Euro lock cylinders, key -key and key - keyless turn supplied, exchanged
- Carry out realignments to your sticking or hard to lock UPVC doors
- UPVC full height multi locking systems repaired, adjusted or replaced
- UPVC locked or jammed door opening and repair service
- UPVC locking gearboxes, handle sets and emergency overnight locks supplied and fitted
- Night latch cylinders and locks, Mortice and Rim locks on timber doors
- Combination Key Safes supplied and fitted for convenient carer, child or family home access

*We accept Card payments, Bank transfer, cash or cheque payments on completion and total satisfaction of works and only when completed. Call Russ now and you will receive the most competitive price guaranteed. Evenings, Saturday, Sunday and out of office hours visits made at no extra charge to conveniently suit you.*

 Just call Russ at MSE LOCKSMITHS on 01206 481763 or Email: mselocksmiths@btinternet.com



**Bathrooms • Kitchens • Plastering**  
**Tiling • Carpentry**  
**Decorating • Landscaping**  
**Local, Reliable, Experienced**

**Free Quotations**  
**Call Chris on: 07990 667 039**  
 33 Coach Road, Alresford



**Heating, Plumbing,  
 Electrical and  
 Renewables Specialist**

**Friendly and Trustworthy  
 Local Engineer**

*Please Call Jack on*  
**01206 820599**  
**07818 034032**

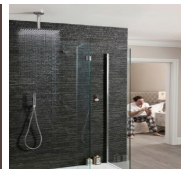
17 Heath Road  
 Alresford  
 Essex  
 CO7 8DT

**Elite** Bathroom Installations Ltd

**Bathroom Installations**



Jack 07818 034032  
 Chris 07990 667039



**Plastering / Decorating**  
**Electrical Work**  
**Flooring/ Tiling**  
**Carpentry**  
**Plumbing**

**All work undertaken**  
**References available**  
**Fully Insured**  
**Full fitting Service**

Elite bathroom installations Ltd is a partnership of JFS & CW Building Services

# M. J. GREEN

TRADING AS M. J. GREEN TREWORK (WIVENHOE) LTD

Established 1977

41 VANESSA DRIVE, WIVENHOE  
ESSEX CO7 9PB

TELEPHONE 01206 825503  
(24 hour emergency service)

Mobile phone numbers:

07786 632002 • 07771 638064  
07771 638067

- Tree felling contractor
- Surgery, coppicing
- Reshaping, reducing
- Hedge cutting, grass cutting
- Rough gardens cleaned and cleared
- Stump grinding
- Fencing supplied, erected and repaired
- All rubbish taken away
- Suppliers of firewood, logs

Free estimates and advice

Full insurance cover • N.P.T.C qualified

Elegant WINDOWS,  
Beautiful DOORS  
& Stylish CONSERVATORIES



Better  
Fitters  
Code

Installed according to the Tricept  
Better Fitters Code Of Practice



Suppliers of TRICEPT Multipoint  
Locking windows, doors and  
conservatories. Fascias, soffits  
and cladding also available.

Wherever you are we deliver quality

HOME IMPROVEMENTS

01206 823903

www.aandk.co.uk 5 minutes from Essex University on the Main Road in Alresford

A&K House, Main Road, Alresford, Colchester CO7 8DB

# SIBBONS

FAMILY RUN BUSINESS SINCE 1964  
LOCAL HIRE & TRADE CENTRE

TOOL  
&  
PLANT  
HIRE

TRADE  
&  
DIY  
STORE

STIHL  
STOCKIST

CALOR  
GAS  
STOCKIST

PLANT  
&  
TOOL  
REPAIR

COLAS  
BITUMEN  
STOCKIST

STIHL®

CALOR

CAMPAIGN  
AGAINST  
LIVING  
MISERABLY

01206 823448

SALES@SIBBONS.CO.UK  
WWW.SIBBONS.CO.UK

# wjr

## Mechanical Services



COMMERCIAL & DOMESTIC PLUMBING



Free, no obligation quote



Boiler renewals and servicing



Vaillant approved installer



Bathroom design & installation



Water main repairs/replacements

Alresford based – call Russel on

07971 519912



## SMALL SCALE SKIPS



1½ & 2 YARD MINI SKIPS  
COMPETITIVE RATES

**WE DELIVER**

SAND BALLAST STONE MOT TYPE I & II  
SOIL CRUSHED CONCRETE

01206 822770 OR 07802 265712

PHONE ANYTIME

## IAN LONGHURST BUILDER

Established 1982

**WORKING IN WIVENHOE FOR OVER 30 YEARS!**

*All external work inc. Brickwork and Roofing*

*All internal work inc. Kitchens and Bathrooms*

*Free Advice and Estimates*

Speak to Ian or Tina:

☎ 07484 724262

ianlonghurstbuilder@outlook.com

**WAVE NETWORKS**

### SUPERFAST WIRELESS BROADBAND

Connecting Communities Across Essex

FREE Install    FREE Router    No Hidden Costs

WAVE 100	WAVE 500 <small>MOST POPULAR</small>	WAVE 900 <small>BEST VALUE</small>
100/50 Mbps	500/250 Mbps	900/450 Mbps
<b>£24.99</b>	<b>£27.99</b>	<b>£29.99</b>

30-DAY MONEY BACK GUARANTEE

[wavenetworks.co.uk](http://wavenetworks.co.uk)    01206 656658



Canberra Carriage Company

# CANBERRA CARRIAGE COMPANY

**FREE COLLECTION AND DELIVERY FOR ALRESFORD RESIDENTS**

Established family run business since 1991

MOT'S, SERVICING AND REPAIRS

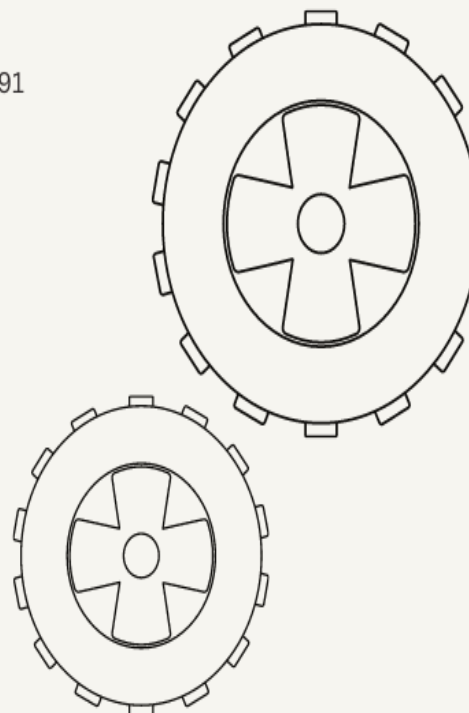
DIAGNOSTICS

AIR CONDITIONING SPECIALISTS

📍 Unit 5, Brunel Business Centre, Clacton-On-Sea

☎ 01255 426394

✉ [Canberracarriage@btconnect.com](mailto:Canberracarriage@btconnect.com)





## TABLE TOP SALE

CLOTHES, SHOES, HOMEWARES,  
FURNITURE, TOYS + MORE

TO BOOK A TABLE MESSAGE  
KRISTIN 07904645758

TABLE IS £5

THIS IS TO COVER COSTS OF THE HALL

**WHEN** SATURDAY 16 MAY 2026  
1.30PM TO 5.00PM

**WHERE** ALRESFORD VILLAGE HALL  
FORD LANE ALRESFORD CO7 8AT

REFRESHMENTS AND CAKES FOR SALE  
PROCEEDS FROM REFRESHMENTS WILL BE DONATED TO THE VILLAGE  
HALL

FREE COMMUNITY EVENT BROUGHT TO YOU BY THE  
ALRESFORD FETE ORGANISING GROUP (AFOG)



Observational walking Treasure Hunt  
for the whole family in and around the  
village of Alresford

**SUNDAY 31ST MAY 2026**  
**2PM Start from the Village Hall,**  
**Ford Lane, Alresford CO7 8AT**

Please bring a  
pen or pencil

Refreshments will  
be available in  
the Village Hall

**Don't miss a fun afternoon  
of fun and discovery!**  
**ALL ARE WELCOME**

## St Andrew's Church

Family Friendly Easter Trail

**Don't miss out!**  
Join us to find out  
about the Easter story

**Free!**  
**All welcome**  
Children must  
be accompanied  
by an adult

Crafts

Activities

Games

Refreshments

Saturday  
4th April  
2 - 3.30pm



St Andrew's Close, CO7 8BL

Some of the trail will be outdoors, weather permitting

## Thorrington Hall Woods Bluebell Open Weekend

Enjoy a walk through the woods  
and see the lovely bluebells at  
Thorrington Hall Woods, Clacton  
Road, Thorrington, CO7 8HA on  
the 25th and 26th April 2026.

Opening at 11am-4pm with a small  
entrance fee and fun trail for  
children (last entry 3pm and dogs  
on leads please).

Refreshments available at the  
Church.



### COPY DEADLINE

The editorial and advertising deadline for the  
JUNE/JULY 2026 edition will be: **8TH MAY 2026**

[alresfordadvertiser@gmail.com](mailto:alresfordadvertiser@gmail.com)

### DISCLAIMER

Submission of material does not always guarantee inclusion within the publication, and advertisements and editorials are published in good faith. The editor cannot be held responsible for the accuracy of any advertisements placed by advertisers. Editorial material does not necessarily reflect the views and opinions of the editors and neither editorial nor advertisements are to be read as recommendations on the part of the editor.