

THE ALRESFORD ADVERTISER DECEMBER 2024 / JANUARY 2025

Established since 1970

**DON'T FORGET TO DECORATE
YOUR HOUSE
FOR CHRISTMAS
SEE PAGE 12**

CHRISTMAS CRAFT & FARMERS MARKET
7th December
See page 12

7th December
WHAT'S ON?
See page 12

PUB QUIZ
At the Village Hall
16th December
See page 12

CHRISTMAS SERVICES
at St Andrews, including
The Nativity Service and
Carols by Candlelight
See page 2

CHRISTMAS SONGS OF PRAISE
at St Andrews
8th December
See page 2

LIVE MUSIC
at St Andrews
25th January 2025
See page 13

MOVIE NIGHTS
For December & January
See page 13

DON'T FORGET!
29th November film
Starts at 7pm

**MINCE PIES
in the Woods**
15th December
See page 13

THE ALRESFORD FETE ORGANISING GROUP (AFOG) GRANT FUNDING

Applications are invited from village organisations for small scale grants to develop our village community in some way, not just to cover running costs but to do something new.

Applications should be made to either
AlresfordFOG@gmail.com or
19 Furze Crescent, C07 8BN

**DEADLINE FOR APPLICATIONS:
31st January 2025**

We would like to say a huge 'Thank you' to everyone who has supported us over the last year. To all our readers, contributors and advertisers, we wish you all

**A Very Merry Christmas
and a
Happy New Year**

from
Hayley, Russell, Mary & David



St Andrew's Church, Alresford

Christmas Songs of Praise

8 December, 4pm

If you would like to stay for afternoon tea following the service, please contact St Andrew's Church office by email or phone:

admin@tenpennyvillages.uk
01206 826376

We would love to see you there.

tenpennyvillages.uk



St Andrew's Church, Alresford

Christmas Services

Sunday 22nd December
Nativity Service - 11.00am
Carols by Candlelight - 6.30pm

Christmas Eve
Midnight Communion Service - 11.30pm

Christmas Day
Communion Service - 10.00am



We would love to see you at our services.



tenpennyvillages.uk

ST ANDREW'S REFLECTIONS

I'll admit it. I absolutely love Christmas. Especially the lead up. As the days turn colder I find myself itching to get the decorations up. Any excuse to add sparkly lights, cosy candles and lots of colour into my life when the days are rapidly getting colder and darker. Yet, as we prepare for Christmas, it could be all too easy to get so caught up in the whirlwind of shopping, wrapping and baking that we miss the truth at the heart of this season that's often obscured by all the glitz and glitter. Christmas is about the birth of Jesus, the Light of the World.

In a world that can sometimes feel dark and uncertain, the story of Jesus' birth reminds us that light always finds a way to shine through. Jesus came as a tiny baby, laid in a manger in a dark and uncertain world, bringing a message of hope, peace, and love for all people.

The light of Jesus continues to shine brightly to this day. Present in all God has made. So, this year, when you admire all the sparkly lights as they start to go up in homes around this wonderful village, reflect on the deeper meaning of Christ's light in the world. Remember what really matters. It's not the presents, the parties, or the decorations, but the incredible gift of love and light that came to us that first Christmas.

This Christmas look for ways to share that light with others - a kind word, a warm gesture, being present with those we love - Acts of kindness that will shine brightly as beacons of hope in the lives of others long after the decorations have been packed away.

Wishing you all a very Merry Christmas, filled with joy and peace.
Reverend Janine

Nativity Service Sunday 22nd December. 11am

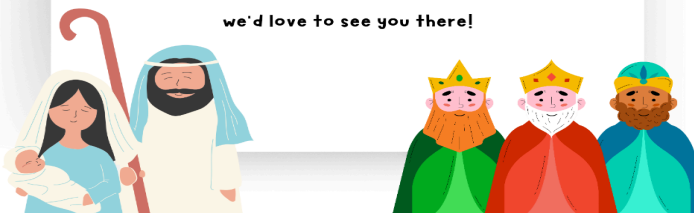
Join us at St Andrew's Church, Alresford, as we adventure back in time to find out about the very first Christmas.



Children are welcome to dress up as angels, wisemen, shepherds or animals! Some costumes will be available at the church.



This will be a child-friendly 'pop-up' nativity service: we'd love to see you there!



www.tenpennyvillages.uk

Find us on

ParishChurchesofAlresfordElmsteadThorrington-TenpennyVillages

Information about our Services can be found on our notice sheet at <http://tenpennyvillages.uk>

CLUBS AND SOCIETIES NEWS

Do you run a club or society? If you would like something included in the Alresford Advertiser, please email alresfordadvertiser@gmail.com

ALRESFORD BOWLS CLUB

You are invited to join us to play carpet bowls

SESSIONS ARE HELD EVERY MONDAY
2.00PM AND 7.00PM
ALRESFORD VILLAGE HALL
JUST COME ALONG

FREE TRIAL SESSIONS ARE AVAILABLE TO
NEWCOMERS

THEREAFTER THERE IS A £10 ANNUAL FEE AND
£2 PER SESSION WHICH INCLUDES
REFRESHMENTS

For further information contact
Andrew Pyman on
07393 381257



1st Alresford & Elmstead Market Scout Group

All you need to get in contact with us

Sections, age groups, meeting places & contact details.

Beavers

Boys & girls aged 6 - 8 years

Meet on a Tuesday evening, 6.30pm - 7.30pm at Alresford Village Hall

alresfordbeavers@outlook.com

Cubs

Boys & girls aged 8 - 10 years

Meet on a Wednesday evening, 6.15pm - 7.45pm at Elmstead Community Centre

karl@elmsteadscouts.org

Scouts

Boys & girls aged 10 - 14 years

Meet on a Wednesday evening 7.45pm - 9.15pm at Elmstead Community Centre

chloe@elmsteadscouts.org

STARTING FRIDAY 25TH OCTOBER 2024

COME ALONG TO



FRIENDS & FAMILY GAMES NIGHT

ALL AGES
AND
ABILITIES
WELCOME

ALRESFORD VILLAGE HALL
FORD LANE
6:30PM TO 9:30PM

DONATIONS APPRECIATED TO
COVER HALL HIRE COSTS

FRIDAY 25TH OCTOBER 2024
FRIDAY 6TH DECEMBER 2024
FRIDAY 31ST JANUARY 2025
THEN THE LAST FRIDAY OF
EVERY MONTH

TEA, COFFEE & A SELECTION OF
GAMES AVAILABLE TO PLAY EACH
NIGHT

YOU CAN BRING YOUR OWN
REFRESHMENTS & GAMES IF YOU
WISH

Contact Courtney 07535707002



St Andrew's - not just for Sundays

Friendship Circle 10:30 to 12:00
1st and 3rd Monday

Although we are a bereavement group, we welcome anyone who is lonely and is seeking company for a chat, coffee and cake.

Memories 14:30 to 16:00
1st Monday

Do you or anyone you know have memory problems? If so, you are very welcome to join us for a time of reminiscing and refreshment. If you would like to join us please contact **Jeanette Downing** on **01206 825008**

Tuesday Tots 10:30 to 12:00
Weekly term-time

Somewhere to bring your little ones to play and somewhere to meet other parents and carers.

Knit and Natter 14:00 to 15:30
Tuesday Fortnightly

Bring your latest craft project or just come along and natter over tea and cake.

Start-up Café 10:30 to 12:00
2nd and 4th Wednesday

The Church transforms into a café to meet old and new friends over tea, coffee and cake, borrow a book or jigsaw and take part in a quiz!

Relax and Renew 13:45 to 15:00
3rd Thursday

Learn relaxation techniques and enjoy some refreshments

Ministry for Men 19:30 to 21:30
4th Thursday.

Meet at St Andrew's, Elmstead Green or Thorrington for a lift to the venue. Put the world to rights over a drink and support our local pubs and other venues

Tenpenny Villages Benefice of Alresford, Elmstead, Frating with Thorrington.

More details on our website www.tenpennyvillages.uk

ALRESFORD VILLAGE HALL REGULAR GROUPS

MONDAY

- Mindfulness Yoga meet Monday mornings
- Alresford Indoor Carpet Bowls Club meet Monday afternoon/Evening.

TUESDAY

- Alresford Lunch Club meet every Tuesday morning and early afternoon
- 1st Alresford Scout Group (Beavers) meet Tuesday Teatime.
- Dog Training Classes Tuesday evening.

WEDNESDAY

- Tai Chi meet every Wednesday morning.
- Alresford Women's Guild meet every other Wednesday afternoon.
- Pilates every Wednesday evening

THURSDAY

- Exercise Classes (Extend) meet every Thursday morning.
- Alresford Women's Institute meet the second Thursday evening of the month
- Sound & Gong Bath meet on the fourth Thursday evening of the month

FRIDAY

- Alresford Calligraphy Group/Art Club meet every Friday morning.
- Simply Singing meet every other Friday afternoon September to May

SATURDAY

- Alresford Craft and Farmers Market on the first Saturday morning of the month (February to December)
- Little City on the 2nd Saturday morning of the month
- Alresford Colne Rangers Football Club (using the Pavilion at the rear of the hall)

If more information is needed for any of these groups, please visit: <https://e-voice.org.uk/alresfordvillagehall/> or contact Russell Milburn on 01206 825739

MOBILE LIBRARY: Alresford Village Hall The Mobile Library visits every: 3 weeks

Day of visit: Thursday
Time of Visit: 11.55am to 12.25pm

NEXT VISIT DATES

12th December

GARDENING CLUB

For our October meeting we once again had the pleasure of a talk given by Dr Chris Gibson from Wivenhoe. The subject was The East Anglian Story which looked at the geological history, climate and other factors that have influenced the wildlife and landscape of East Anglia. It was a thoroughly absorbing talk detailing the time when glacial activity formed much of which we now have as our local landscape, examples such as the ground strata that maintain water springs feeding local watercourses like Sixpenny Brook, which even in times of prolonged drought still maintains a flow of water

Thanks again to all those people who have supported the club during its past 50 years.

Chris Sanderson

SIMPLY SINGING

It has been proven that singing is possibly one of the best ways of offsetting the nasties of advancing years so could the singing group help you?

Our 2025 will commence on **Friday 7th February at 2pm** so we hope to see you all again then. Please mention us to friends, family, neighbours etc. emphasising we are not a choir but a group of people, male and female, who enjoy getting together for a sing song and a great social afternoon.

Other dates:
21st February
7th & 21st March
4th April
2nd & 16th May
6th June

Please come along and give it a try - we normally meet twice monthly on Friday afternoons between 2 and 4pm, cost is just £2 per afternoon which includes refreshments.

For more details, please contact Jeanette on 01206 825008 or Chris on 07484 334698



LUNCHEON CLUBS

TUESDAYS at ALRESFORD VILLAGE HALL:

12.30 - 2.30pm

FRIDAYS at BRIGHTLINGSEA COMMUNITY CENTRE:

12.30 - 2.30pm

2 Course Meal including Tea / Coffee - £7.00
Transport, door to door, if needed - £4.00
Raffle - £1.00

We welcome back all past members and newcomers.

It is not too late to join us for these friendly meals.

For any further enquiries, please contact:

Alresford

Mrs Wendy Bates on
07582603816 or 01206 826757

Brightlingsea

The Autumn Centre, 1 Osborne Court,
Victoria Place, Brightlingsea CO7 0EB
Or telephone 01206 303702

Or email theautumncentre@outlook.com

THE CHARITY BAG

STAMPS for Bone Cancer Research (until there is a cure)

We have a great opportunity to bring some joy whilst raising much needed funds for Bone Cancer Research Trust via Friends Of BCRT - Postage Stamp Appeal & More.

This wonderful young Man is on his third cancer battle. He is battling strong but is extremely far from winning this.

His mum is bringing back the Christmas card appeal. We had a great response in 2022 with Cards and postcards from all over the world and all stamps went to raising money for needed research.

Aiden very much enjoys reading messages from everyone and the support has been crucial for him.

Please send Cards to the follow address and they will be saved ready for Christmas and share this post to everyone in the UK and around the world. Thank you.

Aiden Waller
101 Clifton Avenue
Benfleet
SS7 5QU



KNITTING

All the knits are now bagged up and ready to be collected by St Johns Church, Colchester. The destination is Romania by Christmas.

Thank you for your expertise, effort and generosity. It is a heart lifting sight to behold!

Wishing a traditional Happy Christmas with Seasonal Greetings. May we see you through another winter and greet you again in the new year.

Christine Stimpson
2 Coach Road, Alresford (opposite the surgery)

DOES YOUR CHILD HAVE A BIRTHDAY COMING UP?

WHY NOT TAKE A LOOK AT ALRESFORD VILLAGE HALL?

Weekend sessions available,
08:30 - 12:30 or 13:00 - 17:00

There is room for a 12ft x 15ft bouncy castle

For further information, please email
alresfordvillagehall@gmail.com
or telephone 07548 742796

ALRESFORD COLNE RANGERS F.C



The 2024-25 season has started well for ACRFC after a dismal season of struggle last year. The first team are competitive and occupying the top six of the premier league and have lots to play for as the season progresses., The Reserves are near the bottom of League 2 but a recent 3 wins in a row and with 3 cups to play for is encouraging.

The Ladies with a small squad are competing well and on the 20th of October they faced a mammoth task in the Essex Woman's Cup taking on Colchester United Ladies at Ford Lane in front a large crowd. We were not disgraced and played to the final whistle losing 6-0.

On October 13th we hosted Walking Football tournament and Presentation, and this was highly successful with thanks to all who worked before, during and after to allow this to happen.

The youth teams seasons are all under way with a new Under 7's risen out of the popular Mini-Rangers on a Saturday morning. At this age it is all about inclusion and enjoyment and unfortunately this is not the case with all clubs.

The Under 10's are moving along nicely building for the next challenge with fresh players joining but still adhering to encouragement and enjoyment.

The Under 14's after moving up a level are finding it difficult but are playing and enjoying and this is all part of the learning curve.

The Under 15's are going very well, so overall the youth set up is extremely healthy.

ACRFC continue to try and do the right things and hopefully this bodes well into the future. Increasingly well-established teams have folded in recent times, and this is something we do not want to happen in Alresford, which would leave the superb facility at Alresford empty.

We need new blood with new ideas and new drive to help our long history continue. It can be demanding work but the sense of belonging and building in the community makes this a worthwhile task.

ACRFC wish all the players, parents, guardians, members, and all those in Alresford a very Merry Christmas and a Happy New Year.

Brian Martin

The Ranger

ARE YOU INTERESTED IN BACKGAMMON?

Are there any players, or anyone interested in learning to play this ancient and exciting game? It is easy to learn, quick to play and very interesting.

Please contact Alan at: aldras@hotmail.co.uk or call me 07724 106 102.

ALRESFORD ANGLING ASSOCIATION



Patron: Sir Bernard Jenkin MP

Winter is upon us; the clocks have gone back, and the nights are drawing in, so fishing becomes different, but the air of expectation is still there.

The lakes have been visited by an Osprey, a majestic bird, on its journey down to the West Africa. After fledging their young, the females are the first to make the journey of up to 5,000km. Other birds of prey that have been seen are Kites, Buzzards, Kestrels and Sparrow hawks. The Lakes continue to attract a variety of wildlife and the mild winters have allowed our Kingfisher population to flourish. Large numbers of Geese now make themselves heard and along with Canadas and Greylags a pair of Egyptian Geese were on Alresford Lake.

The issue of litter has again raised its head. It seems to be at weekends that Vapes, plastic drinks bottles, along with food containers etc. are being scattered at parking areas. We have continued to clear up this rubbish and have made the issue known to the Parish Council with the hope of a Police presence to deter any further occurrences.

On the 3rd November, there was a protest march in London to highlight the continued poisoning of Britain's waters. This was supported by the Angling Trust, who we are a member of, along with other groups, and sports governing bodies, all wanting to see major improvements in water quality.

The next few months will be a busy time for clearing and repairing swims ready for next season. It really is gardening

on a grand scale and the intrepid group of members who meet up each week to work their way around the lakes perimeters to ensure everyone can have a clear and safe access to fish. The work parties are very social occasions and the world is always a better place afterwards, but the club is always indebted for their efforts.

As always, enjoy your fishing, stay safe and look out for one another

Tight Lines.
Mike Day (Hon. Secretary)

ALRESFORD WI

The meeting in December will be our Christmas Party with seasonal refreshments and entertainment. In January our speaker will be Sally Anderson-Wei talking about journalism.

A wild cherry tree has been planted, on behalf of Alresford WI, near St. Peter's Church. This was purchased to celebrate the Platinum Jubilee of H.M. Queen Elizabeth 11 who was a long serving member of Sandringham WI.



We meet on the second Thursday of each month in the Village Hall at 7.30pm

New members are always welcome.

For further information please contact

Chris James 07977 495382
Hilda Newbold 01206 823477



ALRESFORD BIKERS - MORE MILES, NEW BIKES, GREAT RIDES

We continue to represent our village locality and rides out have carried on, despite the gradual change in the weather. It takes more than a drop of rain to stop the diehards of AB, oh yes! We're having a great time riding all over Essex, Hertfordshire, Suffolk, Norfolk, all over the place. A couple of us attended the Ride To The Wall at the National Memorial Arboretum early in October, and so we were represented in Staffordshire too. Those of us who now find ourselves retired have had a few Mid-Week rides out; "Shirkers Not Workers" rides, we call them. Nothing too flash, but trips out have included a blast over to North Weald to watch helicopters, jets as old as us, and light aircraft flying about, taking off and landing. We had a ride out to a little seafaring cafe we know, on a boat at Melton Boatyard. This incorporates an interesting entry over a railway gate crossing that the rider must open and close, followed immediately by a hundred yards of loose stones, but no "issues" yet, and on that lovely warm sunny day, it was just right. Another recent run out during the week was to Aldeburgh, where we sat in the sun drinking tea and people watching. You'd never have thought it was October! A first-time ride out to RAF Bradwell Bay Memorial, which is there if you look for it but a bit off the beaten track. A couple of very nice and scenic trips up into Suffolk for visits to cafes, and several to one of our regular spots in Sudbury, and a couple of rides out to Stradishall, Southwold, Creeksea, Leiston, Attleborough, Maldon, Bradwell, and other places like that, and we've racked up a fair few miles this year already.

All this riding means we have noted the dangerous condition of many of the roads we have ridden, and we also note that it is often far easier for us to dodge potholes than it is for car drivers. Huge bumps might be a different matter for us though, and there are some that can have us out of the seat around here. Often cars and vans get a lot worse treatment than we do. But that is also often because we are a great deal more aware of our surroundings than people who can't rip their face off their phone, or other distractions, and we see the road. Example - One of our riders was heading to Brightlingsea, up the hill towards the Church, on Church Road. A little way up there was some mud - what's new? A lady in a large off-roader tank was heading out of Brightlingsea, down the hill. They met, and almost impacted, when she decided to swerve out well over half a car's width over the solid white lines, to avoid a small lump of mud, completely ignoring everyone and everything



around her, including the oncoming rider, whose clairvoyant abilities had him well to the left at the time. Another one involved me personally. I came up behind a car driver who, following the road very slowly round a corner, found himself looking into the Sun. Or would have, had his windscreen not been so indescribably dirty that it just glared out. So, without thinking for a nanosecond, the driver sprayed filthy, stinking, months old windscreen washer, which went all over me, close as I was because of the slow speed. And left his windscreen no better; clearly the dirt was all on the inside. And I personally bet it still is! One quick glimpse into a mirror (those shiny things in the upper middle of your windscreen mate, where you hang the smellies to get rid of the stink of your window washer) would have prevented my drenching and unusual

fragrance. Glad I had my visor down! Drivers, if you need to do it, glance in your mirrors and if we're there, flash your hazards just once first, and let us back off a bit!

Just for fun we have binned our old amusement called "dodge the pothole" too. But to prevent boredom we have invented a new game, called "spot the repair". It seems our alleged Highways maintainers cannot even spell the words Quality Control, or Standards, let alone apply them. Other words like "flat", and "level" are also completely forgotten. (And if you disagree, whoever you are, I have a suitable spare helmet: I dare you to come for a ride on your luna-scape and I'll show you just what a disgraceful state you have allowed our roads to get into!).

As ever at this time of year though, the seasonal change is beginning, and brown sludge is appearing as leaves fall on the roads, and get mashed to pulp, which you may not know if you are not blessed to be a biker, is very slippery. Nearly as slippery as all the mud on the way to Brightlingsea, but I'm digressing. So now it is time for many bikes to go in hibernation until the Spring, when it all starts over again. Not all bikes will be hibernating though, and a few diehards will be riding all year round as ever, continuing to rack up the miles and using a heck of a lot of bike cleaner! So, if you want to learn about bikes, bikers, biking, and all that stuff, come see the lifelong experts in The Pointer Inn, on the second Friday of each month, at 8pm. If we haven't actually done it, we know someone who has!

Al Gillard

ALRESFORD PARISH CHAIRMAN'S REPORT December 2024 / January 2025

Highways and Parking

Repairs to pavements in Station Road are gradually being undertaken by Essex Highways following several years of neglect. The junction of Station Road with Wivenhoe Road had a particularly damaged pathway surface with numerous potholes and sunken tarmac. A special task force under the direction and part control of our County Councillor has been allocated the work. The Parish Council was consulted on what areas should be a priority and this was one site we petitioned the Councillor to deploy his team to deal with. We have not forgotten of course about the serious kerbstone issues in the Coppice Road area.

More complaints are received by the Parish Council about speeding vehicles than on most other matters. A 20% reduction in speeding has been shown to occur when vehicle activated warning signs are used and the Parish Council owns two signs (one on the corner of Crestlands and one near School Road on the B1027) – the other two signs are owned by Essex Highways and unfortunately due to budget cuts over the past two years they do not maintain them. The Parish Council has voted to take over payment for servicing them as we feel they are essential for road safety. We absolutely value the work done by our PCSO Julia Brandon with the Trucam device as her speed checks act as a great deterrent to those that exceed the speed limit and who endanger themselves and other road users and pedestrians.

Parking problems surface regularly – Station Road, Church Road, Ford Lane and St Andrews Close are the main areas affected that the Parish Council is aware of. In Station Road parking enforcement officers and the PCSO have had to issue notifications to drivers who have blocked the footpath with their vehicles. The Parish Council is not ruling out parking restrictions in the future if problems persist.

St Peter's Churchyard

The active part of the churchyard comes under the jurisdiction of the Parochial Church Council and until recently the law would only allow some areas to be directly attended to by the Parish Council. The law has been updated and The Parish Council could now deal directly with the whole churchyard (subject to approval of the Parochial Church Council (PCC) and County authority).

We have decided however that as the PCC oversees internments and maintenance of graves they should continue to control maintenance of the active part of the Churchyard. We have therefore entered into a Compact arrangement with the PCC where costs are shared for the grass and vegetation cuttings. The Council feels it is so important that the churchyard is maintained well and from feedback we know residents are in agreement.

Pavilion/Playing field and car park

The Pavilion (fronting the village playing field) is now thirteen years old – it was constructed as a community leisure project and the Parish Council, Village Hall Committee and Alresford Colne Rangers Football Club all played their part in making sure it was a well-constructed and easily maintained building, to be used by the whole community. The construction of the pavilion was paid for by a number of different grants and a public works loan. Solar Panels have now been fitted to the roof to address spiralling energy costs and the building continues to be well used by the Parish Council, the football club and private hirers.

The award winning playing field is to have further investment to improve recreational facilities. The Hard Court area with

it's multiple use games courts and apparatus is to be upgraded with new, safer surfacing, security cameras, more games choices and better lighting. These improvements will be budgeted for from planning gain monies.

The car park benefits from having two electric vehicle charging points, these points have now been upgraded to very fast charging and it is noted that their use has increased dramatically this year.

There will be soon be some disturbance to the availability of the car park as a sewer pipe is to be installed, at a depth of two metres, from the site of a proposed new toilet block to St Andrews Close.

Planning

The Neighbourhood Plan document, drawn up by the Parish Council and agreed by a village referendum is serving us well in defining to the district planners and possible developers the planning "rules" we trust they will abide by. Having a Neighbourhood Plan in place will be crucial in the coming months as the revised National Planning Policy Framework looks set to guide Tendring District Council to build over 1000 homes each year in the Tendring area. There are many options open to the planners, however the Parish Council has warned about development without adequate infrastructure to cope with housing expansion.

And finally....

As we head towards the New Year the Council can look back positively on a number of accomplishments over the past year, including many visual amenity improvements, our energy savings project coming to fruition, the co-option of two new Councillors and great strides forward in crucial projects with regard to management of Staunton Gate open spaces.

Grateful thanks from all Councillors to our amazing staff and contractors plus acknowledgement of the outstanding work carried out by volunteers who do so much for the community in Alresford.

A Merry Christmas and a Happy New Year to ALL!

Councillor Frank Belgrove
Chairman Alresford Parish Council





ALRESFORD VILLAGE HALL

Charity Commission Number: 301233



Website: <https://e-voice.org.uk/alresfordvillagehall>
<https://www.facebook.com/Alresfordvillagehall/>

An online calendar is available via the website to allow visibility of when the **VILLAGE HALL or PAVILION** is available for hire. Bookings will still need to be made via email or telephone with a booking /security deposit now required to confirm the booking. Hirers are encouraged to pay deposit/fees using BACS and after the hire the deposit is quickly refunded assuming the hall/pavilion is left as the contract of hire defines.

Email: alresfordvillagehall@gmail.com
Contact No: 07548 742796

Please see the website for all news and updates regarding hire times, fees, booking process and advice as to end of session times and clear up including vacating the hall

DEFIBRILLATOR & CPR TRAINING

Finally, the Training happened!!!

Fifty attended the day spread over two sessions and were coached in basic CPR and Defibrillation by a wonderful group of volunteers from Brightlingsea First Responders.

My thanks to Steve Houston and his team for giving up their Saturday.

VILLAGE HALL NEWS

As we go to print the hall is very busy with regular and one-off private hires right up to Christmas. Obviously with the festive season near we are also seeing Christmas events and family parties, all of which our hall is a fantastic venue for.

The solar panel project continues with some fine tuning requiring an update on quotes. At a recent RCCE conference attended by myself and Trustee Chris Sanderson we gained further information to finalise what is a good fit for the village hall. As mentioned in the last Alresford Advertiser, we will endeavour to carry out a small amount of structural work that is required internally and improve the main hall lighting.

The 5-year Electrical Compliance check was completed satisfactorily in October with no major concerns. A few minor failures have already been rectified. The next inspection will be in 2029.

Simply Singing and Movie Night continue to be well attended with 30-40 attending. The Simply Singing is an afternoon with singers performing on the screen with words to the songs at the bottom of the screen. Those who want to sing along do, and those who just enjoy listening and enjoying old footage of bygone artists without singing can do so without any need to feel uncomfortable.

COME ALONG. GIVE IT A TRY AND ENJOY A CUP OF TEA.

Our thanks to John Stimpson for finally clearing and tidying up the hall attic.

HEALTH AND SAFETY/FIRST AID

If you are hiring the Village Hall, please make yourself aware of the Health and Safety procedures, including the Accident book and the emergency procedure in the event of a fire, these can be found in a file in the hall foyer area. A First Aid kit is provided for hires and is located in the kitchen; respect for this would be appreciated. Regular user groups/clubs should also provide their own First Aid kit.



We the Trustees wish you all a Very Happy Christmas and a Peaceful and Healthy New Year

Russell Milburn
Chair AVHMC 01206 825739



ESSEX LIBRARY SERVICE

Winter Reading Challenge 2025



It's official... The Winter Reading Challenge is back!

Essex Library Service is once again hosting a challenge for the chilly season! This time we've got a brand new selection of challenges for kids to choose from, and a group of six cute and colourful dragons for your little ones to adventure with.

Join us for some special seasonal fun from Thursday 2 January to Saturday 22 February 2025!

Sign up in any Essex library near you! <https://libraries.essex.gov.uk/news/winter-reading-challenge/>

Essex Library Service is once again delighted to be partnering with Cards for Good Causes.



Cards for Good Causes is not only the UK's largest multi-charity card agency but also a Christmas gift retailer. It's dedicated to supporting both local and national charities and operating an all year-round as a charitable gifting website. The organisation also opens Christmas pop-up shops, bringing festive cheer while raising funds for vital causes. <https://libraries.essex.gov.uk/news/cards-for-good-causes>

Did you know that your local air ambulance service is a charity, relying on residents' donations?

You might think that the helicopters of Essex & Herts Air Ambulance (EHAAT) often seen flying overhead, are part of the NHS. But this free life-saving service provided 24/7 by helicopters and rapid response vehicles (RRVs) receives limited government funding and no National Lottery grants.

It is thanks to local people and businesses across Essex and Hertfordshire raising funds for EHAAT that the charity can provide its vital medical emergency service.

Last year, their critical care team treated just over 1,900 patients, operating from two airbases in Earls Colne and North Weald.

Each critical care team consists of a pre-hospital care doctor, a critical care paramedic plus a pilot and co-pilot who rush their clinical colleagues to the scene of medical emergencies within minutes, carrying life-saving equipment to deliver advanced clinical care. Usually, this equipment is only available in the hospital emergency department. Thanks to EHAAT and local people's generosity, patients have received life-saving transfusions from the blood reserves carried on board the helicopters and RRVs.

Many volunteers lend a helping hand to support the charity, all playing an important part. Jane Morton, EHAAT Volunteer Manager says their time is hugely valued by the charity. She explains: "The core of our operations extends beyond our

fleet of helicopters and advanced medical interventions, it's the spirit of our supporters and volunteers that drive us forward.

"From helping in our charity shops to sorting treasures in our warehouses, picking up collection tins, giving engaging visitor centre tours and supporting events, every hour of volunteering makes a meaningful difference. Yet, it's more than the tasks at hand – it's about making connections and lasting friendships. Whether it's sharing experiences, learning new skills, or stepping in to support community events, our volunteers not only impact our operations as a charity but inspire others and create positive change across our local communities."

If you're looking to give your time to help your local life-saving charity in the most meaningful way, please visit ehaat.org/volunteer/ and discover how your contribution can support their mission. If you'd prefer to discuss how you can get involved or have any questions, EHAAT Volunteer Manager, Jane Morton, is just a call or an email away at 0345 2417 690 or jane.morton@ehaat.org.



PETER CLARKE

It is with much sadness that we announce the passing of our father Peter Charles Clarke on the 19th of October 2024 aged 92 years.

Peter with his wife Maureen moved to Station Road Alresford in 1959. They raised their family there and Peter very much enjoyed living in the village.

After retiring he became a relief postman as well as being known for repairing lawn mowers for family and friends. He was seen in the village with his cap on saying "The Mower Man". He could be seen cycling around the village and speaking to people. He always said he could start a conversation with anyone.

Over the years Peter attended church regularly he assisted as Church Warden at Alresford Church. He would also collect people and take them to church for a variety of events and services. He would cut the grass, do maintenance jobs and was on the cleaning rota.

He and Maureen joined Alresford Carpet Bowls club, enjoying playing the leagues. He organised coach trips and holidays for the club and became the Club Chairman which he really enjoyed.

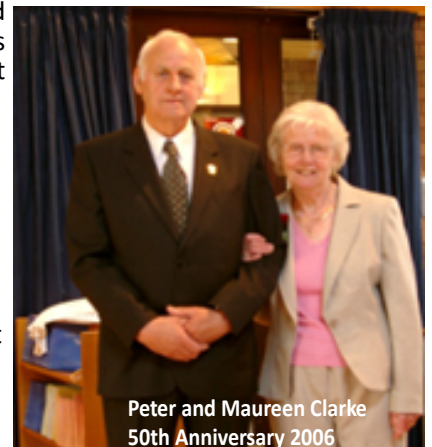
In 2007 Peter and Maureen received the Tendring Volunteer of the year award for their support to the Alresford Community over many years.

After the passing of his beloved wife Maureen in Jan 2018, the family were able to fulfil their dad's wish for him to live

at his home for as long as possible. To remain close to his memories of family and friends.

The family would like to thank the carers, neighbours and friends who enabled him to stay in his bungalow until the last few weeks of his life.

Peter passed away peacefully at Nayland Care Home. Peter leaves behind his children Michael, Teresa, and Sandra as well as grand and great grandchildren.



Peter and Maureen Clarke
50th Anniversary 2006



VOLUNTEER OF THE YEAR AWARD

At the National Carers Week awards ceremony on June 1st, local residents Maureen and Peter Clarke won the Volunteer of the Year Award from TCVS in recognition of their many years of service to the community

Congratulations to Maureen and Peter, pictured being presented with their award by Joan Coates

St Helena Hospice Christmas Tree-cycle returns in January 2025

The popular St Helena Hospice annual Christmas Tree-cycle is returning!

Save yourself the trip to the recycling centre and let St Helena Hospice take care of the Christmas clean up for you.

If you live in postcode areas: CO1-CO9, and CO11 to CO16, St Helena Hospice's team of volunteers can collect your real Christmas tree in return of a donation.

Your donation will help provide compassionate care and support to people in your community facing incurable illness and bereavement. You can feel good knowing you are not only reducing waste, but you're also helping ensure St Helena Hospice can be there for the people you love, when they need it.



Collection is between Friday 10th and Monday 13th January 2025. Simply register before Sunday 5th January at www.sthelenahospice.org.uk/treecycle25

Would you like to volunteer? If you would like to help collect trees, or if you could supply a van for the volunteers to use, please contact the fundraising team on fundraising@sthelenahospice.org.uk or call the fundraising office on 01206 931 468.

The Christmas Tree-cycle is kindly sponsored by Tree & Lawn Company and supported by Birch Airfield, Essex Reclamation, Love Essex, Colchester City Council, Essex County Council and Tendring District Council.



ARE NOW ENGRAVING IN ALRESFORD
ORCHARD BUSINESS CENTRE
D12 COCKAYNES LANE.

**WE SUPPLY AND ENGRAVE
TROPHIES AND GLASSWARE**

01206 382828 & 07454 925203

**ANNUAL TROPHIES
ENGRAVED**

frank@blastedglasscompany.co.uk
www.blastedglasscompany.co.uk

consciously
clothed
preloved boutique

A local and conscious service helping the local community to resell and buy quality preloved clothes.

Commit to a long-term relationship with clothes, it's one of the most effective ways to fight fast fashion.

Find us at:
Unit 8, Wivenhoe Business Centre
Brook Street
Wivenhoe CO7 9DP

Sign up to hear our latest news at:
www.consciouslyclothed.co.uk






Follow us on Instagram
[@consciously_clothed_](https://www.instagram.com/consciously_clothed_)

Tel: 07708 441176

Christopher
THE LOCKSMITH

ARE YOUR LOCKS BEHAVING BADLY?

We Value Old Fashioned Customer Service
A Local Trusted Family Business Since 1989

-  Specialist in UPVC & Wooden Doors
-  No Call Out Charge
-  No Fix No Fee
-  All Work Fully Guaranteed
-  10% Senior Citizen Discount



For More Advice & Help Call Christopher:

07772 111 222

www.christopherthelocksmith.co.uk

BROUGHT TO YOU BY THE ALRESFORD FETE ORGANISING GROUP

DECORATE FOR CHRISTMAS

Decorate a window, a tree, your house or front garden for Christmas to help spread some festive cheer around the village.



!!FREE ENTRY!!

To enter, email your name and address to AlresfordFOG@gmail.com or call Courtney on 07535707002

**PRIZES
TO BE
WON**

**JUDGING WILL TAKE PLACE BETWEEN
THE 7TH AND 14TH OF DECEMBER**

ALRESFORD CRAFT & FARMERS MARKET

Christmas Market
Saturday 7th December
Village Hall
9 am - midday

Last market of the year, come and find your Christmas gifts from our wonderful crafters. Stalls include, Norwegian Bakers with bread, pastries and cake, Sunnymead Farm with a variety of meat, Glendenning Farm with a selection of honey and wax Gnomes and Bee hives, the cafe with cakes, scones and of course breakfast baps and drinks. Various crafters, with cards, artwork, woodcraft, jewellery, glass art and more to be confirmed.

There will be a Christmas Raffle with the proceeds supporting a village group.

2025 DATES:

1st February, 1st March, 5th April,
3rd May, 7th June, 5th July,
2nd August, 6th September, 4th October,
1st November, 6th December



WE LOOK FORWARD TO WELCOMING YOU

PUB QUIZ

16th December 7pm (Doors open 6:30pm)

Alresford Village Hall (not the Pavilion!)

£3 per person
max. 6 people per team

with raffle

BYO food and drink

Book in advance to guarantee your team by texting
07516459342, or pay on door

Proceeds to help fund a production by Really Theatre

CHRISTMAS COMMUNITY DAY

7th December

9am - midday

Craft & Farmers Market at the Village Hall

Midday - 2pm

Station Adopters/Volunteers will be by the ticket machine - learn about the future plans for the station and community gardens and look at the recent awards

6pm: Switching on of the Christmas Tree lights at The Pointer





Mince Pies in the woods

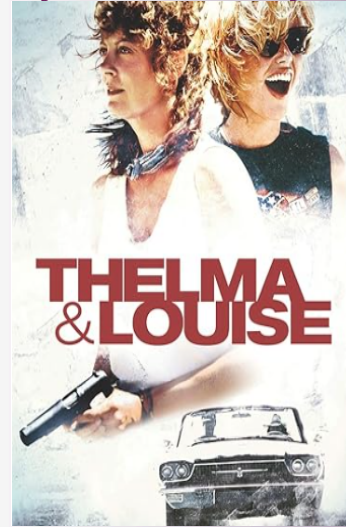
Sunday 15th December 2024
11am to 2pm.

Come and meet some of our Site Maintenance Team, have a walk around the reserve and collect some berryed Holly for Xmas decoration. Hot drinks and mince pies will be available at the central area near the bridge, for a small donation to site maintenance. On-site parking available in the yard, accessed from the Wivenhoe Road entrance beside the railway line.



MOVIE NIGHT

At Alresford Village Hall
Friday 10th January 2025



Film starts at 7.30 - doors open at 7.00pm

This is a no cost - non ticket event but donations will be very welcome for the teas and coffees

Alresford VH Management Committee

MOVIE NIGHT

becomes

MUSIC NIGHT



at Alresford Village Hall

Friday 13th December 2024



An opportunity of seeing some of your favourite singers and groups on the big screen

Evening starts at 7.30 - doors open at 7.00pm

This is a Charity Fund raising evening - the proceeds of which will be sent to Macmillan and the East Anglian Children's Hospice (EACH)

Teas and Coffees will be available, but please feel free to bring your own drinks (& glasses) and nibbles

Alresford VH Management Committee

LIVE MUSIC @ ST ANDREWS ALRESFORD

come and join us for an evening of live music from two local bands

ADMISSION
£5 ON DOOR
Refreshments available

25 JANUARY 2025
7:30PM
(DOORS OPEN 7PM)



Silver Lining

Songs you love with a folky feel

The Hoolies

Wivenhoe's
Shanty Band



Proceeds to help improve the carbon footprint of St Andrew's Church

TRUSTEES WANTED



Are you old or new to the village?
We are looking for Trustees to join our Management Committee for the Village Hall.
If you are interested, please give me a call on 01206 825739

ALRESFORD VILLAGE SHOP

Colchester Main Road
01206 828169

Extended Opening Hours:

Monday - Saturday: 5.00am- 9.00pm

Sunday: 6.00am - 8.00pm

New, more variety stock available including a wide range of beers, wines, spirits, groceries, confectionery, soft drinks etc.

Hot food: sausage rolls & pasties

LOOK OUT FOR OUT SPECIAL OFFERS

MyHermes Parcel Label Printing, Send & Return Service also Collection Point Printing Service & Payment Facility available in Store

Agents for Danes Launderers & Dry Cleaners

Cash Machine

Newspaper Delivery

Customer Car Park



www.simplyhaberdashery.com

Check out our vast range of products and low prices

Fabrics, quilting accessories, Braids & trimmings, buttons, Cords, Elastics, Fasteners, Sewing & mending accessories, Sewing machine accessories, Threads, Velcro, Ribbons, Zips, Tapes and much more....

Free delivery or shipping!!



01206 581177

info@simplyhaberdashery.com

Paypal and all major credit & debit cards accepted

Direct Animal Feeds

01206 827035

The complete range of animal feeds, bedding and accessories for

Horses Dogs Cats Small Pets Poultry

Opening:

Mon - Fri: 9am - 5pm

Sat: 9am - 4pm

Local delivery available

Email: directanimalfeeds6@gmail.com

Maggie: 07885082281

Unit 3, Heath Farm

Cockaynes Lane

Alresford

C07 8DA



The Company You Can Count On

Since 1981, Abacus Shutters has provided London and the Home Counties with a wide variety of fire and security roller shutters, doors, grilles, gates and barriers.



Whether it's residential, commercial or industrial, whether your concern is security or fire safety, Abacus Shutters has got you covered. For more details, get in touch with our friendly staff!

Abacus Shutters Ltd.

E-mail: sales@abacusshutters.co.uk

Tel. +44 (0)845 644 1225

OOH Tel. +44 (0)7989 600 675

Website: www.abacusshutters.co.uk



Blue Onion Catering

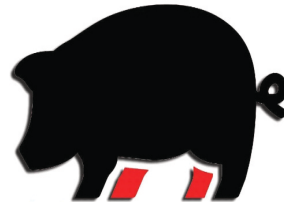
FREE delivery in local area

- * All occasions catered for weddings, funerals etc
- * Quality buffets & homemade dessert
- * Delivered to your venue or home
- * Afternoon teas delivered to your venue



01255 861617
07738 616816 or 07795 441635

www.blueonion-catering.co.uk
blueonioncatering@hotmail.com



BECKY'S BUTCHERS

Family Run Butchers / Local Delivery Service

Quality Meat / Shop in store or online

07720833207
beckysbutchers@gmail.com
beckysbutchers.co.uk

Badley Hall Farm, Great Bromley,
Colchester, Essex CO7 7UU

Open Wednesday, Thursday Friday and Saturday
9am - 4pm

Local Beef, Lamb, Pork, Chicken and Game

Award Winning Sausages / Handmade Pies

BBQ Meats / Frozen Fish

Eggs, Jams and Chutneys

Christmas Turkeys and much more

MARK
BRUMPTON
TREE SERVICES



TREE SURGEON

Reshaping
Reducing
Surgery Work
and Clearance

FULL INSURANCE

For Free Estimate and Advice

TELEPHONE:
01206 825498
Or 07885749934

Roxburgh
Colchester Main Road
Alresford
CO7 8DG



SALES SERVICING REPAIRS HIRE

OF

GARDEN MACHINERY AND EQUIPMENT

*

HEDGE TRIMMERS – CHAINSAWS - STRIMMERS

WALK BEHIND MOWERS – LAWN SCARIFIERS

CHIPPERS – SHREDDERS – ROTAVATORS

RIDE ON MOWERS

*

UNIT 1 FRATING HALL FARM, CHURCH ROAD,

FRATING, COLCHESTER, CO7 7HD

TELEPHONE: 01206 250990/07860 411024

WEB: www.gbfarmservices.co.uk

EMAIL: gbfarmservices@btconnect.com

ALRESFORD POST OFFICE & CONVENIENCE STORE

55 Station Road, Alresford
Essex, CO7 8BX

Opening Times:

Monday - Saturday 8am - 7pm
Sunday 8am - 4pm

FREE BANKING SERVICES

Cash withdrawals, cash and cheques deposits for the following Banks: Barclays, Halifax, HSBC, First Direct, M & S Bank, Lloyds, NatWest, Smile, Santander, The Co-op Bank, TSB, Royal Bank of Scotland, Cahoot, Bank of Ireland, Clydesdale Bank, Yorkshire Bank, CAF Bank

Cash withdrawals ONLY: Nationwide

DON'T FORGET...Your local Post Office offers many other services including:

'One4all' multi-store cards

Amazon Returns/Customer Drop Off Service



Hypnosis Centres

What We Do: At Anthony Wilson Hypnotherapy, we specialise in transforming lives through expert hypnotherapy. With over 35 years of experience, we're dedicated to helping you overcome challenges and achieve a balanced, fulfilling life.

Services: Specialising in phobia treatment, self-esteem enhancement, confidence building, anxiety and stress relief, depression management, smoking cessation, and weight loss programs.

Why Choose Us: Unlike our competitors, we combine decades of experience with a personalised approach, ensuring each client receives tailored treatment for their unique needs.

Innovative Techniques: We use cutting-edge hypnotherapy techniques to ensure effective and lasting results.

Personalised Care: Each session is customised to address your specific goals and challenges.

Friendly and Personable: We're not just hypnotherapists; we're your partners in wellness, right here in Essex and Suffolk.



Appointments available in Alresford

Please contact us on 07775630085 or
www.anthonywilsonhypnotherapy.com

SJ conversions

Builder

Free Estimates

EXTENSIONS

LOFT CONVERSIONS

NEW KITCHEN FITS

NEW BATHROOM FITS

GARAGE CONVERSIONS

07899045847

01206824752

stuartjohnbush@gmx.co.uk

I. BLANCHETTE PLUMBING AND HEATING

Bathroom Installations
Ceramic Tiling
All Domestic Plumbing
Central Heating Systems
Boiler Upgrades
Boiler Maintenance Repairs
Power Flushing
Under Floor Heating
Pressurised Water Systems

Established 30 years
Reliable and Friendly Service

Tel: 01206 827464

Mobile: 07967 533 314

GASsafe reg no: 64249

ian.blanchette@talk21.com

Your local solution for fully fitted blinds & shutters

We offer a vast range of quality products to suit your needs.

With over 20 years experience in the trade, our installations are to the highest standard.



Shutters
Rollers
Verticals
Romans
Perfect Fit
Venetians
Intu
Day & Night
Pleated
Skylight
Motorisation
VS2 Slide



Call Us Today For Your
FREE QUOTATION

Tendring
Blinds & Shutters
01255 474241
www.tendringblinds.co.uk



M.D. Spackman Building Services

Brickwork~Groundwork~Extensions
Fencing~Paving~Maintenance
Certified Digger Driver / Dumper Driver

CSCS Registered

Call Mark on 07811 869316 or 01206 827995
Email: thespackmanhouse@btinternet.com

Alresford, Colchester, Essex

Garden and General Maintenance Services

WALKER WORKS

Ryan Walker
01206 824080
07887 746399

M. J. GREEN

TRADING AS M. J. GREEN TREWORK (WIVENHOE) LTD

Established 1977

41 VANESSA DRIVE, WIVENHOE
ESSEX CO7 9PB

TELEPHONE 01206 825503
(24 hour emergency service)

Mobile phone numbers:

07786 632002 • 07771 638064
07771 638067

- Tree felling contractor
- Surgery, coppicing
- Reshaping, reducing
- Hedge cutting, grass cutting
- Rough gardens cleaned and cleared
- Stump grinding
- Fencing supplied, erected and repaired
- All rubbish taken away
- Suppliers of firewood, logs

Free estimates and advice

Full insurance cover • N.P.T.C qualified



FOOT CLINIC

Trish Parker MAFHP MCFHP MINA • 17 Years Experience
Foot Practitioner of Year Winner 2019

CONSULTATIONS • CLINIC OPEN IN BRIGHTLINGSEA
5 DAYS A WEEK • DIABETIC PATIENTS WELCOME

PROFESSIONAL TREATMENTS COVERING ALL FOOT DISORDERS
Removal of Corns • Hard Skin • Ingrown Toenails • Infections
Fungal Infections • Athlete's Foot • Thickened/Deformed Nails
Verruca's • Cracked and Painful Heels • Fallen Arches



Call Trish Now To Book
An Appointment

Prices From Only £20

01206 307884 . 07808 938563

Clinic Held at: 66 Seaview Road, Brightlingsea



OCM
Orchard Cottage Montessori
Nursery Ltd
Happiness and learning grow together

Ofsted
Outstanding
Provider

- Outstanding nursery education for girls and boys aged 2-5 years
- Government funding accepted for 3 and 4 year-olds
- Set in beautiful, secluded grounds in the village of Alresford



For more
information
contact us
today

www.orchardcottageмонтessori.co.uk

01206 825607

Email: o.c.m@btconnect.com

Elite Bathroom Installations Ltd

Bathroom Installations



Jack 07818 034032
Chris 07990 667039



Plastering / Decorating
Electrical Work
Flooring / Tiling
Carpentry
Plumbing

All work undertaken
References available
Fully Insured
Full fitting Service

Elite bathroom installations Ltd is a partnership of JFS & CW Building Services



Bathrooms • Kitchens • Plastering
Tiling • Carpentry
Decorating • Landscaping
Local, Reliable, Experienced

Free Quotations

Call Chris on: 07990 667 039

33 Coach Road, Alresford



Heating, Plumbing,
Electrical and
Renewables Specialist

Friendly and Trustworthy
Local Engineer

Please Call Jack on
01206 820599
07818 034032

17 Heath Road
Alresford
Essex
CO7 8DT

SIBBONS

PLANT & TOOL
HIRE

TRADE/DIY
STORE

Your local hire and trade centre!!

Family run since 1964.

Open Mon - Fri
7 - 4.30

PLANT & TOOL
REPAIR

Tel: 01206 823448
Fax: 01206 825266
sales@sibbons.co.uk
www.sibbons.co.uk



Elegant WINDOWS,
Beautiful DOORS
& Stylish CONSERVATORIES

Approved
Installer



As seen on TV



Installed according to the Tricept
Better Fitters Code Of Practice

Suppliers of TRICEPT Multipoint
Locking windows, doors and
conservatories. Fascias, soffits
and cladding also available.

Wherever you are we deliver quality



HOME IMPROVEMENTS

01206 823903

www.aandk.co.uk

5 minutes from Essex University on the Main Road in Alresford

A&K House, Main Road, Alresford, Colchester CO7 8DB

IAN LONGHURST BUILDER

Established 1982

WORKING IN WIVENHOE FOR OVER 30 YEARS!

All external work inc. Brickwork and Roofing

All internal work inc. Kitchens and Bathrooms

Free Advice and Estimates

Speak to Ian or Tina:

☐ 07484 724262

ianlonghurstbuilder@outlook.com

SMALL SCALE SKIPS



1½ & 2 YARD MINI SKIPS
COMPETITIVE RATES

WE DELIVER

SAND BALLAST STONE MOT TYPE I & II
SOIL CRUSHED CONCRETE

01206 822770 OR 07802 265712

PHONE ANYTIME

wjr

Mechanical Services



COMMERCIAL & DOMESTIC PLUMBING



Free, no obligation quote



Boiler renewals and servicing



Vaillant approved installer



Bathroom design & installation



Water main repairs/replacements

Alresford based – call Russel on
07971 519912







CANBERRA CARRIAGE COMPANY

**FREE COLLECTION AND
DELIVERY
FOR ALRESFORD
RESIDENTS**

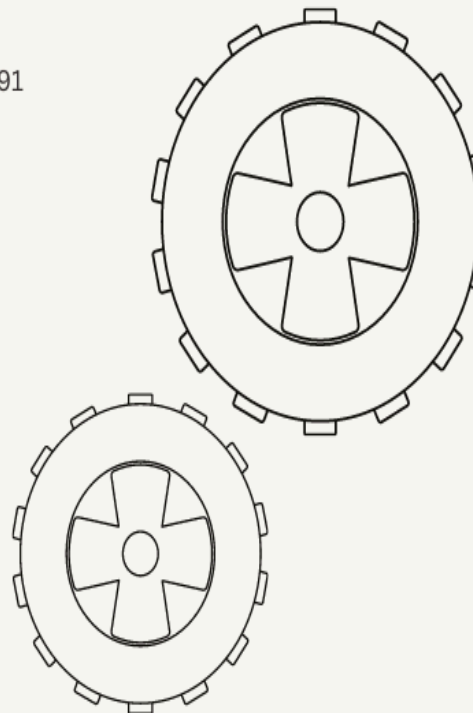
Established family run business since 1991

**MOT'S, SERVICING AND REPAIRS
DIAGNOSTICS
AIR CONDITIONING SPECIALISITS**

 Unit 5. Brunel Business Centre. Clacton-On-Sea

 01255 426394

 Canberracarriage@btconnect.com



ALRESFORD FISH & CHIPS

(Kebabs and Burgers)

ORDER ONLINE
At alresfordfishbar.com

Telephone orders welcome

 01206 616360
 51 Station Road CO7 8BU

Delivery or collection by 



Delivering
**UP TO 7 MILES
FROM ALRESFORD**



OPENING TIMES
11.30am - 10.00pm
7 DAYS A WEEK



K-FUSION



Pop along to our hiphop studio in Alresford, We offer dance classes in a fusion of dance styles from street to Kpop.

Classes start from 4 years old, up to adult sessions.

SPECIAL: Birthday troop parties available, film your own music video!

Please see our website for class times and dates.

Kpop Street Modern Hip-hop Commercial Freestyle

www.k-fusion.co.uk

07497 383229

Address: 13a The Orchard Business Units,
Cockaynes Lane, Alresford, CO7 8BZ

ALRESFORD NEIGHBOURHOOD POLICING SEPTEMBER/OCTOBER 2024

Pages 20 & 21

24/08/2024 - 29/09/2024

RECORDED CRIMES: 20

CRIME TYPES: Assault, Assault without injury - Criminal damage other - Domestic - Harassment x 2 - Other x 4 - Police Dispersal - Residential burglary (unconnected building) x 3 - Section A Public order x 2 - Theft from motor vehicle - Theft of motor vehicle - Threats x 2

INCIDENTS RECORDED: 29

TYPES REPORTED: Alarm - Assault - Domestic x 4 - Highway dispute - Ill/injury - Information x 2 - Malicious communications - Other x 7 - Pedestrian - Rave - Road traffic collision - Suspicious circumstances x 2 - Theft from store - Theft from vehicle x 2 - Threats x 3

30/09/2024 - 26/10/2024

RECORDED CRIMES: 8

CRIME TYPES: Assault without injury X 2 - Criminal damage other - Criminal damage to vehicle - Domestic - Hate crime - Non crime investigation - Section 4A Public Order

INCIDENTS RECORDED: 15

TYPES REPORTED: Abandoned 999 x 2 - Criminal damage to motor vehicle - Disturbance x 2 - Domestic x 2 - Hate crime - Missing person x 5 - Road traffic collision - Suspicious circumstances

TRUCAM (SPEEDING):

SEPTEMBER 2024: 3 x 1 hour sessions in a 30mph zone

MONTHLY TOTAL: 13

- 1) **6 vehicles** exceeding the speed limit - Top speed **37mph**
- 2) **2 vehicles** exceeding the speed limit - Top speed **41mph**
- 3) **5 vehicles** exceeding the speed limit - Top speed **59mph**

This session captured one speeding driver that had been previously reported by residents for driving around the village like a maniac (their words). The vehicle was not only caught once, but twice **both ways** in the same session. With speeds of **59mph** and **37mph** this may see the driver explaining his actions in court.

OCTOBER 2024: 3 X 1 hour sessions in a 30mph zone

MONTHLY TOTAL: 35

- 1) **24 vehicles** exceeding the speed limit - Top speed **42mph**
- 2) **9 vehicles** exceeding the speed limit - Top speed **41mph**
- 3) **2 vehicles** exceeding the speed limit - Top speed **39mph**

The **30mph** signs were checked before and after deployment and were **clearly visible**

Trucam will be deployed on a regular basis in the village

Please drive with due care and attention

THERE IS NO EXCUSE FOR POOR DRIVING

CONSIDERATE PARKING TICKET

SEPTEMBER 2024: 1 x CPI for pavement obstruction

OCTOBER 2024: 4 x CPI for footpath obstruction and too close to station crossing

THEFT FROM A VEHICLE There have been more incidents of theft from vehicle, which is being investigated.

If you have any information please ring 101 or if you prefer, contact me at Julia.brandon@essex.police.uk

Always check you lock your vehicle and remove any valuables from inside. It is worth getting a dash cam as an extra safety

precaution, not only for evidence of bad driving on the roads but this can also capture suspects whilst the vehicle is stationary (if 24 hour recording is wired).

DANGEROUS ROAD CONDITIONS

Please drive with care on rural roads, mud and brakes do not work well together.

PARTY AT THE CREEK

Large professional speakers on the back of a vehicle and a gathering were seen on their way to the Creek and reported to the police.

Police arrived promptly and went to various routes to white house beach where it became evident this was the location and stopped people entering the beach, they stopped the party before it got in full swing, where the group were dispersed. Hopefully it was dispersed before causing any noise nuisance to local residents.

BEWARE HORSE RIDERS

There have been dangerous driving brought to my attention by riders on horseback. Vehicles are going by them way to close and too fast. This could cause the horse to lose control, which could cause a nasty accident to the riders.

You may cross a double-white line if necessary (provided the road is clear) to overtake someone cycling or riding a horse if they are travelling at 10 mph or less (Rule 129).

There is updated guidance on safe passing distances and speeds for people driving or riding a motorcycle when overtaking vulnerable road users, including:

- leaving at least 1.5 metres (5 feet) when overtaking people cycling at speeds of up to 30mph, and giving them more space when overtaking at higher speeds
- passing people riding horses or driving horse-drawn vehicles at speeds under 10 mph and allowing at least 2 metres (6.5 feet) of space
- allowing at least 2 metres (6.5 feet) of space and keeping to a low speed when passing people walking in the road (for example, where there's no pavement)

Wait behind them and do not overtake if it's unsafe or not possible to meet these clearances.

THEFT FROM OUTBUILDINGS

There has been theft from outbuildings in other villages, the main item of interest was ride on lawn mowers.

Please make sure your outbuildings/sheds are secure and if you have not got lighting near it, it may be a good idea to fit motion sensor lights or other forms of security.

DOG FAECES There has been a large amount of dog mess left in public areas and full dog bags left scattered around, these bags can be dangerous for wildlife.

If you are going to let your dog off the lead, please make sure you watch them and clear up their mess. If there is not a dog bin close by please take it home and dispose of it.

KNIFE/DRUG SWEEPS

Numerous knife/drug sweeps have been done in various locations around the village. If you come across any please report it to Essex Police.

INTELLIGENCE

A vast amount of information has been gained from the community, some of it could be the missing link. If you see something that doesn't look right, please report it.

LITTER OF ALCOHOL CANS

It has again been brought to my attention that a vehicle is regularly depositing alcohol cans from their car window along Ford Lane.

This is not only littering, but brings the element of possible drink driving, which of course could pose a risk to the safety of others on the road.

If anyone has any information or concern for this driver, please contact myself on the link below or report it via 101 or online.

NETWORK RAIL

Faulty Barrier

Please call emergency 24 hour helpline on 03457 11 41 41 if there's a safety threat to you or to others such as:

- people, animals, trees or objects on or near the track
- damage or fault at a level crossing
- a vehicle has hit a bridge
- a broken fence or open gate allowing access to the track.

FRAUD/SCAMS

Telephone scams and advertising are an everyday problem. There have been numerous allegedly coming from 02.

If you are fed up with these calls, sign yourself up to TPS- Telephone preference service,

[Telephone Preference Service \(tpsonline.org.uk\)](https://www.tpsonline.org.uk) Here you should be able to register all your phones. Once done just block each caller until

The service has had time to take effect. Any further spam calls can then be reported directly to TPS.

ST ANDREW'S CHURCH BOOK CAFÉ

Community Engagement

As many of you may know, there is a coffee morning at St Andrews Church on the 2nd and 4th Wednesday of the month. This is a welcome for all to pop in and have a chat with others in the community over a coffee and slice of cake. They are such a lovely friendly group.

I will be in attendance on the following date if you have any concerns in Alresford, or just want to pop along to say hello.

Wednesday 22nd January 2024: 10.30-12.00 hours

Reports from the last attended engagement- Drugs/ parking/dangerous drivers/speeding

Suspicious circumstances.

If you see anything that does not look right, report it.

Try and get as much information as you can, including registration numbers, which are key to a lot of activity.

The more you have, the more chance we have of a positive investigation, with results.

Reporting incidents the correct way.

Residents are still **not** reporting incidents the **correct way** or **when they happen**, if at all.

It is vital that incidents are reported at the time of the incident so the right team can be assigned with a better chance of progress, please **do not** email or ring the PCSO to report incidents.

To report an incident please **ring 101 or for Emergency 999**

Or report it online:

<https://www.essex.police.uk/do-it-online/report-a-crime/>

For anything else email your local PCSO:

Julia.brandon@essex.police.uk

Happy Soles

by Holly

Professional Foot Care Treatment & Advice in the Comfort of Your Own Home

- ✓ Nail Cut and File
- ✓ Fungal Nails
- ✓ Corn Removal
- ✓ Ingrowing Toenails
- ✓ Thickened Nails
- ✓ Cracked Heels
- ✓ Callus Reduction
- ✓ Verrucas
- ✓ Athletes Foot
- ✓ Diabetic Footcare

Book an appointment Today
Happy Feet Happy You!

07895 197 577
holly@happysoles.co

Registered Health Foot Practitioner: Holly O'Toole DipFH MCFHP MAFHP

Sunnymead Farm

WIVENHOE - ESSEX

Home grown, high welfare, outdoor reared:
**Water Buffalo/ Pork/ Lamb/ Mutton/
Occasional Beef**

Chickens- point of lay hens and hatching eggs

SHOP Open Saturdays 9-12pm, OR by pre booking

Roasts, Bacon, Gammon, Steaks, Mince, Diced, Burgers,
Sausages, Slow Cooking bits etc.
WHOLE or HALF; Butchered/unbutchered Pork & Lamb

**Taking Christmas orders: Gammon, Sausage Meat,
Pork, Buffalo and Lamb**

Sunnymead farm, Alresford road, Wivenhoe, CO7 9JZ.

**Please contact Emily for more information on:
07817404362**

Follow us on instagram or facebook to keep up to date
with the animals and special offers

www.sunnymeadfarm.org

USEFUL CONTACTS

ALRESFORD PARISH COUNCIL CONTACT DETAILS

The Parish Office, The Pavilion, Ford Lane
Alresford CO7 8AT

Council meetings are held at the Pavilion on the first Wednesday of every month at 7.30pm. Public and Press are welcome. Agenda & Approved Minutes on website

Website: www.alresfordpcessex.uk/

Facebook: Alresford Parish Council (Parish Council only)/The Pavilion & Playing Field - Alresford Essex

Twitter: @alresfordessex

Chairman: Cllr Frank Belgrove - 01206 823739

Vice-Chairman: Cllr Ernie Osborne

Cllr Linda Belgrove

Cllr Simon Clark

Cllr Gary Scott

Cllr Ann Wiggins

Cllr Vincent Dalzell

Cllr Bina Swash

Cllr Julia Claremont-Brown

Cllr Courtney Muller

Cllr Kristen Doulai

District Council Tendring

District Councillor Ann Wiggins - 01206 825153

Email: cllr.awiggins@tendringdc.gov.uk

District Councillor Gary Scott - 01206 820769

Email: cllr.gscott@tendringdc.gov.uk

County Council Essex

County Councillor Alan Goggin - 01206 308023

Email: egog@btinternet.com

Parish Clerk - The Proper Officer

Matt Cooke - 01206 615117 (Answerphone 24/7)

Email: alresfordpc@outlook.com

Responsible Finance Officer & Assistant Clerk

Angela Baxter - 01206 615117 (Answerphone 24/7)

Email: rfopcessex@outlook.com

ST ANDREW'S CHURCH CONTACTS

Rector: Rev Andrew Fordyce - 01206 920848

Email: rector@tenpennyvillages.uk

Associated Priest: Rev Pauline Hart - 01206 826318

Email: assocpriest@tenpennyvillages.uk

Curate: Janine Wilde

Email: curate@tenpennyvillages.uk

Churchwarden: Lyn Bull - 01206 827146

Email: stachurchwardens@tenpennyvillages.uk

Bookings for the Hub: Meg Burdus - 01206 820618

VILLAGE HALL

Chair: Russell Milburn

Email: alresfordvillagehall@gmail.com

Contact No: 07548 742796

ALRESFORD FETE ORGANISING GROUP (AFOG)

AlresfordFOG@gmail.com

POLICE

PCSO: Julia.brandon@essex.police.uk

To report an incident please ring:

101 or for Emergency 999

To report a crime online:

<https://www.essex.police.uk/do-it-online/report-a-crime/>

WHO TO REPORT TO FOR PARKING ISSUES/ VEHICLES

DVLA: [Report an untaxed vehicle - GOV.UK \(www.gov.uk\)](http://www.gov.uk)

Deal with Vehicles with No MOT OR TAX on the public highway. DVLA can remove them.

Police will intervene when the vehicle is being driven with a fixed penalty notice.

PARKING EAST: parking.east@colchester.gov.uk

PARKING SERVICES: parking@tendringdc.gov.uk / 01255 686969

Deal with inconsiderate parking under the highway code.

Police will intervene if the vehicle is a danger to the highway i.e. a complete block likely to cause an accident, where other vehicles etc cannot pass.

COPY DEADLINE

The editorial and advertising deadline for the August /September 2024 edition will be:

8th January 2025

ALRESFORD ADVERTISER CONTACT DETAILS

EMAIL: alresfordadvertiser@gmail.com

TELEPHONE: 01206 825739

ADDRESS: 22 Station Road, Alresford, CO7 8BT

Over 1250 copies delivered to every household & business in Alresford, also available online in colour via the Parish Council & Village Hall websites: www.alresfordpcessex.uk & <https://e-voice.org.uk/alresfordvillagehall/>

CPR AND DEFIBRILLATOR TRAINING

Finally, after 18 months of arranging trainers and venue for a CPR and Defibrillation overview the day went ahead on Saturday October 19th at the Village Hall.

The training was delivered by Brightlingsea First Responders, a team of 6 volunteers on the day lead by Steve Houston and was split into a morning and afternoon session accommodating a total of 50 who signed up for the training.



Steve delivered the course in a very user-friendly manner and used dummies to enable all to put the theory of CPR into practice and following this to understand the use of the defibrillator. A training defibrillator was available for all to see and try out. The sessions were very well received and all that attended are now in a better place to assist if they come across anyone who is in trouble either with breathing or with a cardiac incident.

Steve and his colleagues all work on a volunteer basis and are called regularly to attend on 999 incidents of which do include Alresford and we are extremely grateful for their service to others of which the only reward is to try and save lives.

The Brightlingsea First Responders need donations to enable this very important function to make the largest difference possible and details are below if any who attended the sessions or those that are grateful that people such as the responders exist, wish to donate:

ACCOUNT NAME: Brightlingsea First Responders

ACCOUNT NUMBER: 27896862

SORT CODE: 60-06-06

There are 4 Defibrillators in the Village

Outside the main entrance of the Village Hall



Outside the rear of the Pavilion (facing the playing field)



Immediately opposite the ticket machine at the Station



Outside the Post Office



Do we need another one perhaps located at the Village Stores?

Russell Milburn

DISCLAIMER

Submission of material does not always guarantee inclusion within the publication, and advertisements and editorials are published in good faith. The editor cannot be held responsible for the accuracy of any advertisements placed by advertisers. Editorial material does not necessarily reflect the views and opinions of the editors and neither editorial nor advertisements are to be read as recommendations on the part of the editor.