



THE ALRESFORD ADVERTISER

AUGUST/SEPTEMBER 2024

Established since 1970

COCKAYNES LANE QUIET LANE CONSULTATION EVENT

You are invited to attend a "drop-in" event in the Village Hall, (Ford Lane, Alresford) on Wednesday 11th September 6.30pm to 8.30 pm. Further details can be found on page 12



ALRESFORD SALE TRAIL

Following the success of others done locally Alresford welcomes a sale trail! Browse to buy or enter your own stall in the village!

Saturday 17th August
10am-3pm
Stalls £5 to be on the map

Please contact Sammy on 07883615215

More details to follow see Alresford Community support page on Facebook for updates



CHARITY NO. 1046024

ALRESFORD PRIMARY SCHOOL
Autumn Fete

60

FREE ENTRY

SATURDAY 28TH
SEPTEMBER
12-4PM

Celebrating **Sixty** years of Alresford Primary School!

Join us for lots of fun from 12pm to 4pm including:

- | | |
|-------------------------|-------------------|
| INFLATABLES | BEAT THE GOALIE |
| BBQ | CRAFTING |
| BAR | NETBALL CHALLENGE |
| TEA/COFFEE AND CAKE | TEDDY TOMBOLA |
| ICE CREAM | BOTTLE TOMBOLA |
| SLUSH SHACK | HOOK A DUCK |
| SCARECROW COMPETITION | HOOPLA |
| A VISIT FROM WYVERNWOOD | SOAK THE TEACHER |
| LIVE PERFORMANCES | COCONUT SHY |
| LOTS OF PRIZES | CREATIVE WRITING |

AND LOTS MORE!!!

WE NEED YOUR HELP

IF YOU ARE WILLING TO HELP RUN A STALL PLEASE
EMAIL PTA@ALRESFORD.ESSEX.SCH.UK

St Andrew's Church Alresford
Tuesday Tots

Teddy Bears' Picnic!

We are holding a Teddy Bears' Picnic for under 5's and their families in the field at the side of the church on Tuesday 20th August from 11am - 1pm. (to be held in the church if it rains)

Bring your rug, picnic and your teddy!

Do come and join us, we would love to see you
All families welcome

For more information, please contact Julie on
01206 827429 or Wendy on 01206
825040

tenpennyvillages.uk

For further events, please see the back page

Over 1250 copies delivered to every household & business in Alresford, also available online in colour via the Parish Council & Village Hall websites: www.alresfordpcsex.uk & <https://e-voice.org.uk/alresfordvillagehall/>

IAN DIMMOCK

It is with great sadness that we suffered the loss of Ian Dimmock in June. Ian was a founder member of the Fete Organising committee, now known as AFOG, in 2011 and immediately took the crucial position of Treasurer. He remained in that role until 2023 and then continued to belong to the committee helping out the new Treasurer. Ian was a great believer in our community and involved himself with other village projects over the years, including the Alresford Advertiser and the Village Hall, and even after the recent loss of his Penny and ongoing health concerns, he continued to support and advise those who now volunteer to manage these concerns.

We offer our sincere condolences to Matthew, Christopher and their families and we will always be grateful for having Ian as part of the Fete Organising Group.

"KINDNESS"

We would like to give a big **THANK YOU** to a guy who came to our rescue when we had a problem with our car in Station Road.

There are still many people who are very kind. All we know about him is his name is David and he lives in Staunton Gate.

Much gratitude

Carol and John Sallows

THE CHARITY BAG

KNITTING

Knitting and wool still continue to be dropped off at my door. Squares are crocheted together, and blankets made. Pattern books are deposited and gratefully received.

We had a lovely surprise gift from a very generous donor. Two heavy boxes of excellent quality baby clothes sets, on hangers with protective covers. Sadly, these cannot be exported to Europe because of customs and excise restrictions. A huge thank you for your generosity.

These have now been collected and will be taken to Y.E.S (Colchester/Tendring) – Youth Enquiry Services supporting young people who need counselling services, Housing and Homelessness and Teen pregnancy and young families. More information can be found at [YES | Youth Enquiry Service | Supporting Young People \(yesouthenquiryservice.org\)](https://www.yesouthenquiryservice.org).

The request for baby clothes has now changed to blankets please. Any size, colour or suitability for European winters.

Wool and needles available together with local collection and delivery.

STAMPS for Bone Cancer Research (until there is a cure)

Stamps continue to trickle in, hopefully we can deliver these to Benfleet soon. Old stamp albums and postcards are also required. ½" around each stamp please.

May I thank you on behalf of those who cannot thank you themselves.

Take care always and thank you

Chris Stimpson
2 Coach Road, Alresford (opposite the surgery)

ESSEX LOCAL NATURE RECOVERY STRATEGY

More than ever, wildlife and their habitats are under threat for survival. The Essex Local Nature Recovery Strategy provides a new vision for our natural spaces and the draft strategy is being prepared for public consultation.

The primary aim of the Essex Local Nature Recovery Strategy is to pinpoint the best locations for the creation and enhancement of habitats, ensuring the greatest benefits for biodiversity and the wider environment. By outlining key biodiversity priorities and proposed actions, the aim is to achieve a more connected, collaborative approach to nature recovery.

The Essex Local Nature Recovery Strategy draft has been developed in collaboration with farmers, landowners, environmental NGOs, local authorities, members of the public and more. The draft strategy is expected to go to public consultation later this summer.

Sign up to receive updates when the public consultation is live by scanning the QR code below or visiting: <https://consultations.essex.gov.uk/c-e/lhrs-public-consultation>

For more information of the Essex Local Nature Recovery Strategy visit:

www.essexnaturepartnership.co.uk



CLUBS AND SOCIETIES NEWS

Do you run a club or society? If you would like something included in the Alresford Advertiser, please email alresfordadvertiser@gmail.com



1st Alresford & Elmstead Market Scout Group

All you need to get in contact with us

Sections, age groups, meeting places & contact details.

Beavers

Boys & girls aged 6 - 8 years

Meet on a Tuesday evening, 6.30pm - 7.30pm at Alresford Village Hall

alresfordbeavers@outlook.com

Cubs

Boys & girls aged 8 - 10 years

Meet on a Wednesday evening, 6.15pm - 7.45pm at Elmstead Community Centre

karl@elmsteadscouts.org

Scouts

Boys & girls aged 10 - 14 years

Meet on a Wednesday evening 7.45pm - 9.15pm at Elmstead Community Centre

chloe@elmsteadscouts.org

ALRESFORD CRAFT & FARMERS MARKET 2024 DATES



3rd August
7th September
5th October
2nd November
7th December

**Alresford Village Hall
Ford Lane CO7 8AT**

9am - 12 noon

A variety of food & craft stalls

Free Admission
Free car park and disabled facilities
For updated information, please check our FB page

ALRESFORD BOWLS CLUB

You are invited to join us to play carpet bowls

**SESSIONS ARE HELD EVERY MONDAY
2.00PM AND 7.00PM**

**ALRESFORD VILLAGE HALL
JUST COME ALONG**

**FREE TRIAL SESSIONS ARE AVAILABLE TO
NEWCOMERS**

**THEREAFTER THERE IS A £10 ANNUAL FEE AND
£2 PER SESSION WHICH INCLUDES
REFRESHMENTS**

For further information contact
Andrew Pyman on
07393 381257



Thank you to all that attended the Alresford Carpet Bowls Quiz night, it was a great night attended by over a 100 people from the local area. Our quiz master Roy, was on top form with some thought-provoking questions about our local area and news items from the past week. How easy we forget what had happen in the news the week before or what is the official name of the main road.

Special thanks to Nick for scoring the event, Jenny and Barbra for helping organise the event and everyone who help pack away the table and chairs at the end of the evening.

With any quiz you have to have a winning team and a losing team, on the night the losing team received a wooden spoon and a bar of chocolate each. The winning team walking away with an official Alresford Bowls Club tea mug and a bottle of wine and chocolates each.

Thank you to everyone who donated money on the night either by purchasing raffle tickets, playing the heads and tails game or just turning up, we were able to raise £401.40 after subtracting a few expenses to host the event.

The Alresford Bowls Club also had a stall at the Party in the Park event last month and raised £48.60, thank you to Albert, Nick, Jenny and Roy for looking after the target golf stall.

With the proceeds from both these events it means that we are able to donate £450 to the Alresford Primary School PTA to help with the Swimming Pool Fund. This is a fantastic amount for a local club to donate and we look forward to seeing the pool in use again.

Once again thank you to everyone for the donations

Alresford Carpet Bowls Club

DISCLAIMER

Submission of material does not always guarantee inclusion within the publication, and advertisements and editorials are published in good faith. The editor cannot be held responsible for the accuracy of any advertisements placed by advertisers. Editorial material does not necessarily reflect the views and opinions of the editors and neither editorial nor advertisements are to be read as recommendations on the part of the editor.

ALRESFORD VILLAGE HALL REGULAR GROUPS

MONDAY

- Mindfulness Yoga meet Monday mornings
- Alresford Indoor Carpet Bowls Club meet Monday afternoon/Evening.
- Alresford Gardening Club (affiliated to the RHS as Alresford Horticultural Society) meet on the first Monday of the Month, March to November

TUESDAY

- Alresford Lunch Club meet every Tuesday morning and early afternoon
- 1st Alresford Scout Group (Beavers) meet Tuesday Teatime.
- Dog Training Classes Tuesday evening.

WEDNESDAY

- Tai Chi meet every Wednesday morning.
- Alresford Women's Guild meet every other Wednesday afternoon.

THURSDAY

- Exercise Classes (Extend) meet every Thursday morning.
- Young People's Dance School meet every Thursday afternoon
- Alresford Women's Institute meet the second Thursday evening of the month
- Alresford Camera Club meet the first Thursday evening on the month

FRIDAY

- Alresford Calligraphy Group/Art Club meet every Friday morning.
- Simply Singing meet every other Friday Afternoon September to May

SATURDAY

- Alresford Craft and Farmers Market on the first Saturday morning of the month (February to December)
- Little City on the 2nd Saturday morning of the month
- Alresford Colne Rangers Football Club (using the Pavilion at the rear of the hall)

If more information is needed for any of these groups, please visit: <https://e-voice.org.uk/alresfordvillagehall/> or contact Russell Milburn on 01206 825739

ALRESFORD WI

Our speaker at the June meeting was Robert Needham, who stepped in at the last minute after our original speaker had to go into hospital suddenly. He gave us a very interesting talk on his career as Colchester Town Crier.

The speaker for July was Alec Marsh who is an author of historical fiction. At time of writing we have not had our meeting.

The speaker in August will be talking about Fraud Prevention and September we hope to hear about the heritage of the Essex seaside.

We meet on the second Thursday of each month in the Village Hal. Meetings start at 7.30p.m.

For further information please contact

Chris James 07977 495382
Hilda Newbold 01206 823477

SIMPLY SINGING

It has been proven that singing is possibly one of the best ways of offsetting the nasties of advancing years so could the singing group help you?

Our new season will commence on **Friday 4th October at 2pm** so we hope to see you all again then. Please mention us to friends, family, neighbours etc. emphasising we are not a choir but a group of people, male and female, who enjoy getting together for a sing song and a great social afternoon.

Other dates:

18th October

1st, 15th & 29th November.

For more details please contact Jeanette 01206 825008 or Chris 07484334698

Please come along and give it a try - we normally meet twice monthly on Friday afternoons between 2 and 4pm, cost is just £2 per afternoon which includes refreshments.

For more details, please contact Jeanette on 01206 825008 or Chris on 07484 334698



LUNCHEON CLUBS

TUESDAYS at ALRESFORD VILLAGE HALL:

12.30 - 2.30pm

FRIDAYS at BRIGHTLINGSEA COMMUNITY CENTRE:

12.30 - 2.30pm

2 Course Meal including Tea / Coffee - £7.00
Transport, door to door, if needed - £4.00
Raffle - £1.00

We welcome back all past members and newcomers.

It is not too late to join us for these friendly meals.

For any further enquiries, please contact:

Alresford

Mrs Wendy Bates on
07582603816 or 01206 826757

Brightlingsea

The Autumn Centre, 1 Osborne Court,
Victoria Place, Brightlingsea CO7 0EB
Or telephone 01206 303702

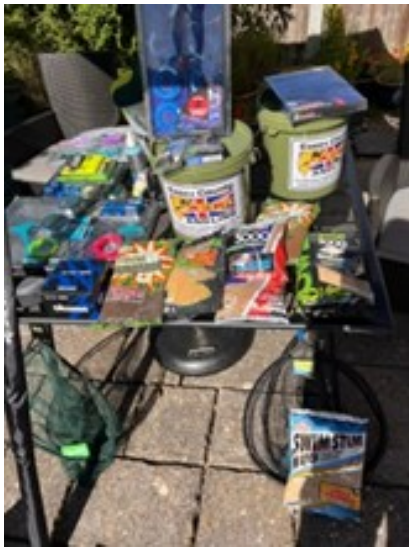
Or email theautumncentre@outlook.com

ALRESFORD ANGLING ASSOCIATION



Patron: Sir Bernard Jenkin MP

Welcome to all our members, returning and new, to the season of 2024/2025. The unpredictability of the weather has been a popular topic, although those of us with a few years under our belt look upon this as a normal British Summer. Water levels in all the club's lakes are at a point where they were several years ago and the lakes fish are exploring areas unreachable over the last 6 years. Because of the ups and downs in temperature though, spawning has been very unpredictable, with the Carp in the Alresford lake having a second session at the end of June.



Once again, the club held a charity pairs match to raise funds for St Helena Hospice. Pictured are some of the raffle prizes donated by Phil from Essex County Angling. Along with the sale of raffle tickets and entrance fee monies, the club is able to donate £372 to help towards all family members coping with terminal illness. Thanks, must go to Steve Sibbons and Adrian Loughton for organising this successful annual event.

We are entering that time of year when certain members of society think that they have an unalienable right to trespass, swim or fish on our waters. Membership is all, as without that you are not covered by any insurance. The attraction of water on a hot day can be magnetic, but underwater hazards and cold-water levels (thermoclines) can result in tragedy. Jumping into water where the surface temperature 20°C does not prepare you for the 6°C level deeper down. Every year there are tragic events caused by unsupervised swimming. The other aspect to trespass is the potential loss to wildlife and their habitat. The breaking down of hedges and the starting of fires can have a devastating effect for all nesting birds, small mammals and reptiles in ground cover. We will continue to liaise with the Police and our neighbours in an attempt to prevent loss and damage to property.

Please remember to clear up at the end of your session and leave no litter. Even if it is someone else's rubbish. Please take 5 minutes to ensure your area is rubbish free. Club membership is now progressing smoothly after a few start-up problems and numbers are approaching the

required level. Jim Martin is still your port of call if any issues arise. His number is 07786882064.

The addition of several hundred small Carp into Alresford Lake will be a bonus over the next few years as they increase in size and replace fish lost to natural wastage.

As always, enjoy your fishing, stay safe and look out for one another

Tight Lines.
Mike Day (Hon. Secretary)

ALRESFORD GARDENING CLUB

Several members visited the NGS garden at Blunts Hall near Witham in May. It was an opportunity to look round a lovely garden and enjoy some delicious refreshments provided by the garden owner and host Alan Gambling.

In June our speaker was Dr Ian Bedford from Norfolk. Prior to his retirement Ian worked in conjunction with the John Innes Institute. His talk on Companion Planting for a Balanced Garden went far beyond what we typically understand as best practise to control pests and improve plant life. Ian drew our attention to how nature balances its own survival, both plant and animal wise and how we as gardeners can learn from this. Yes, his talk did as it's title suggests inform us what to grow alongside other plants to minimise pest issues, but Ian introduced us to a far deeper look into entomology and surprisingly, what we consider as pests not being so, but essential in maintaining a good garden balance.

For our July meeting, Liz Huxley gave a talk entitled "Tales from the Riverbank". This covered the types of plants and wildlife that can be found on the peripheries of rivers, ponds or any form of water. Liz is a keen photographer and she brought along a comprehensive display of her work, which she offered for sale. Liz leads a series of guided walks, one of which on Tuesday 30th July, will be our own Cockaynes Wood. For details of this and her other guided walks please visit www.lizhuxley.co.uk

On a sombre note, the low numbers of previous years members re joining the club this season has been very disappointing. Couple this to the cost of speakers and the question of sustainability and the clubs continuance comes to the fore. The committee will be discussing the options going forward, but if you have anything you would like to bring to their attention please do speak to us.

For more details please contact Chris on 07484334698

MOBILE LIBRARY: Alresford Village Hall The Mobile Library visits every: 3 weeks

Day of visit: Thursday
Time of Visit: 11.55am to 12.25pm

NEXT VISIT DATES
8th and 29th August 2024
19th September
10th and 31st October
21st November
12th December



ALRESFORD COLNE RANGERS F.C

June 2024 turned out to be a great month for Alresford Colne Rangers Football Club. On the 1st it was the club's presentation day for the three youth teams, two men's teams, 1 Ladies Team and the Walking football team. The club was very full with a great atmosphere.

The committee put a lot of demanding work on the day in setting up the village hall and it looked fantastic with the tables decorated with clothes and balloons in the club colours. The club always like to recognise people who go unnoticed but without these the club would struggle to exist. A small token of flowers was presented to those who support these people.

The awards are a credit to watch, and it is a pleasure to see parents faces when their respective off springs names are called. All awards are deserved.

I must mention a special award the club made to Claire Brown for her outstanding service to the club involving our Charter status and secretary for the youth teams over many years.

The work continues to improve the playing field with bags of seed and fertiliser applied in the late spring. Our thanks to Russel Pugh and Andy Holben for their work.

On the 8th of June and the Picnic in the Park was once again meaning lots of work for a small group of people, not only on the day but all year round in bringing this event together. We know more people are needed to refresh those on the organising group so please watch the Alresford Advertiser for further details. The club put in a lot of work on the day and all this effort was rewarded by a packed Playing Field with a brilliant atmosphere enjoying two live bands and the chance to meet others in the community. We thank everyone who attended and commend you all for leaving the field litter free.

So, we now move on to pre-season and the Alan Green Day (July 20th) in memory of a truly lovely man and a Rangers stalwart. The club welcome a James Pickard, Harry Willoughby, and Ross Barnard to boost the current team manager, Ryan Amass. All other team managers are staying in position.

We have a new under seven team starting and Mini Rangers will continue in the autumn.

The men's teams season starts on August 10th and the Ladies and youth teams on September 8th. All teams have managed to secure sponsorship, and this is appreciated.

As always, we look forward to seeing new and old at our club and if you want to become a member, please enquire in the club house.

Ranger

Brian Martin ACRFC

Footnote

Brian Martin was awarded the Alresford Colne Rangers Club Person of the year award and those of us at ACRFC know that Brian is the spine of our club and although he will be embarrassed by this award, it is important that his devotion to the Playing Field, Pavilion, Bar, kit washing, consulting with Parish Council, assisting with the Ladies Team and being our representative on the Border League Management Committee is appreciated by all within the club.

Thank You Brian.





ST ANDREW'S REFLECTIONS SACRED SUMMER

I am writing this just after getting home from six weeks away visiting Australia and New Zealand. It was a journey of a lifetime!! We saw amazing sights, desert, ocean, mountains, glaciers, kangaroos, quokkas, wallabies, koala bears, kiwis, snakes, penguins, glow worms, volcanoes, geysers, rainforest. We tasted some excellent wines and ate wonderful food. And so much more. We saw both the dryness and barrenness of desert and ice and also the richness and lushness of forest. Daily we were reminded of how amazing creation is. What a gift!

One of the strangest things coming back to the UK was that it was nearly summer. When we left we had only just put the clocks forward and spring was only just springing. Over there it was, of course, autumn with cold nights, short days and, in some places, autumn colours.

When we got back home everything was green, the plants in the garden had grown – especially the weeds and it didn't get dark until 9.00pm! It was summer!

Holidays and summer can remind us of the insane generosity of God. In summer trees and plants flower and fruit in a way that can seem almost criminally wasteful. Neither animals nor humans can eat and use all the fruit that emerges from the trees and bushes. If a spirituality of summer tells us anything, it is that the fruition of the earth, the fruit of time spent quietly, contemplatively going about our daily tasks, is always going to be more than we can calculate and make use of in obvious ways.

A sense of the sacredness of the present moment can free us from the tyranny of time, dominated by market forces and the idolisation of work and of always striving for more and better in order to feel valued. The God whose times and seasons are full of generous wastefulness invites us in the summer, perhaps more vividly than at other times, to hear his voice as an invitation to savour the beauties of creation.

Rev Pauline Hart, Associate Priest

The Tenpenny Villages Benefice

St Andrew's, Alresford; St Anne & St Laurence, Elmstead Market & St Mary Magdalen, Frating with Thorrington
Tel: (01206) 826318

Email: assocpriest@tenpennyvillages.uk

www.tenpennyvillages.uk

Find us on fb: 

ParishChurchesofAlresfordElmsteadThorrington-TenpennyVillages

Information about our Services can be found on our notice sheet at <http://tenpennyvillages.uk>



DO YOU HAVE MEMORY PROBLEMS OR DO YOU SUPPORT SOMEONE WITH MEMORY PROBLEMS

Why not come along together to the **ALRESFORD MEMORIES GROUP**, for refreshments, and enjoy an afternoon of reminiscing with us.

BEGINNING MONDAY 2ND SEPTEMBER

We meet on the **first Monday of the month**, and will be relaunching on **MONDAY 2nd SEPTEMBER 2024**

The meetings take place in **THE ST ANDREWS HUB** from **2.30 - 4pm**. If you would like to join us please contact:

Jeanette Downing 01206 825008



St Andrew's - not just for Sundays

Friendship Circle 10:30 to 12:00

1st and 3rd Monday

Although we are a bereavement group, we welcome anyone who is lonely and is seeking company for a chat, coffee and cake.

Memories 14:30 to 16:00

1st Monday

Do you or anyone you know have memory problems? If so, you are very welcome to join us for a time of reminiscing and refreshment.

Tuesday Tots 10:30 to 12:00

Weekly term-time

Somewhere to bring your little ones to play and somewhere to meet other parents and carers.

Knit and Natter 14:00 to 15:30

Tuesday Fortnightly

Bring your latest craft project or just come along and natter over tea and cake.

Start-up Café 10:30 to 12:00

2nd and 4th Wednesday

The Church transforms into a café to meet old and new friends over tea, coffee and cake, borrow a book or jigsaw and take part in a quiz!

Relax and Renew 13:45 to 15:00

3rd Thursday

Learn relaxation techniques and enjoy some refreshments

Ministry for Men 19:30 to 21:30

4th Thursday.

Meet at St Andrew's, Elmstead Green or Thorrington for a lift to the venue. Put the world to rights over a drink and support our local pubs and other venues

Tenpenny Villages Benefice of Alresford, Elmstead, Frating with Thorrington.
More details on our website www.tenpennyvillages.uk

ALRESFORD VILLAGE HALL
Charity Commission Number: 301233



Website: <https://e-voice.org.uk/alresfordvillagehall>
<https://www.facebook.com/Alresfordvillagehall/>

ARE YOU OLD OR NEW TO THE VILLAGE??
WOULD YOU LIKE TO BECOME A TRUSTEE FOR
THE VILLAGE HALL?
INTERESTED!!! GIVE ME A CALL 01206 825739

An online calendar is available via the website to allow visibility of when the hall is available for hire. Bookings will still need to be made via email or telephone with a booking /security deposit now required to confirm the booking. Hirers are encouraged to pay deposit/fees using BACS and after the hire the deposit is quickly refunded assuming the hall is left as the contract of hire defines.

Email: alresfordvillagehall@gmail.com
Contact No: 07548 742796

Please see the website for all news and updates regarding hire times, booking process and advice as to end of session times and clear up including vacating the hall

IAN DIMMOCK:

It is with great sadness that we have heard of the death of Ian Dimmock. Ian was a great supported of the village hall and for many years he did the audit/financial inspection on our accounts. Ian became involved in the hall in what was a low point in the early 2000's when the hall was in serious financial trouble, and he remained a staunch advocate from those days up until the present. On a personal level, Ian was always someone I could go to for advice that I could trust, for that I am eternally grateful.

Our condolences to Matthew, Christopher, and all of the family.

**Defibrillator and CPR Training
UPDATE**

We are intending to arrange training for Defibrillator, when and how to use and how to conduct Cardiopulmonary resuscitation, also more commonly referred to as CPR.

There has been an encouraging number registering an interest in this and the training will be scheduled a little later in the year to fit in with the trainer and hall availability.

If you are interested, please contact us via the email address or call us on 07548 742796.

There is NO COST

There has been issues in finding trainers which has caused the delay in scheduling this course but all being well the course should be held in September/October.

We will contact all interested when a date is known.

VILLAGE HALL NEWS

As already communicated, we are having to increase hire fees for in some scenarios for the first time in 18 years. All regular hire groups have been advised of the need to increase and the new charges will be introduced in the 3rd quarter on this year, starting in the September 2024. The reasons are very much cost of living related with utilities cost greatly increased, insurance increased by 60% and maintenance also being hugely affected by increased labour and parts costs. This along with the existing Trustees getting older and not able to do so much of the day-to-day work for no cost has needed the Trustees to act now to protect the future of the village hall. There has also been a slight decline in hire, especially in the regular group hire as these groups are also having difficulties in attracting new membership and officers to run the clubs. This of course means a decline in revenue. We are now post AGM and with a new Treasurer in place we can now move on with finalising new signatories and completing the transfer to online banking and coming away from the now time-consuming system of cheque book and cash banking, although we of course can still manage these transactions if required.

We were please to donate the plastic chairs mentioned in the April Advertiser to a Church Charity base in Ipswich.

We have lost Di Spackman and Fiona Harvey as Trustees, and we thank them both for their service to our Village Hall. We are very pleased to welcome Andrew Pyman to the Trustees and look forward to him bringing to the Management Committee a new outlook from his younger years and of course input from being a representative of the Bowls Club.

The Village Hall is continuing to investigate Solar Panel for the hall and Trustee Chris Sanderson is currently meeting with companies and other village halls to take this project forward. There are funds in the hall development accounts to help this but grant funding will also be required.

The Simply Singing is currently on its summer break but will recommence in October as will the film nights. Please see October/November Advertiser for details. These are very enjoyable events costing just £2.00 for Singing and a donation for the Film night and a chance to socialise and meet new friends. I recommend you give it a go if you are feeling that you need a little boost.

Hall use is very busy with private hires at weekends especially being very popular. We are sorry to lose a regular hirer, Manoir Yoga from the Wednesday Night session. We are currently Hosting the Sound Bath/Gong groups, and this has added to the wide range of activities available in the halls.

HALL /PAVILION HIRE

The Village Hall/Pavilion/Bar is available for hire individually or as a package.

All enquiries should be via: alresfordvillagehall@gmail.com

HEALTH AND SAFETY/FIRST AID

If you are hiring the Village Hall, please make yourself aware of the Health and Safety procedures, including the Accident book and the emergency procedure in the event of a fire, these can be found in a file in the hall foyer area. A First Aid kit is provided for hires and is located in the kitchen; respect for this would be appreciated. Regular user groups/clubs should also provide their own First Aid kit.

Russell Milburn
Chair AVHMC 01206 825739

ALRESFORD NEIGHBOURHOOD POLICING MAY 2024

(Pages 9 & 10)

28/04/2024 - 31/05/2024

RECORDED CRIMES: 13

CRIME TYPES: ABH x 2 - Assault without injury x 4 - Domestic - Malicious Communications x 2 - Other - Other criminal damage x 2 - stalking

INCIDENTS REPORTED: 8

TYPES REPORTED: Alarm - Criminal damage - Disturbance - Domestic x 2 - Malicious communications - Nuisance neighbour - Suspicious circumstances

01/06/2024 - 30/06/2024

RECORDED CRIMES: 8

CRIME TYPES: Burglary - Criminal damage to building - Non crime investigation x 2 - Other x 3 - Theft from shops

INCIDENTS REPORTED: 14

TYPES REPORTED: Abandoned 999 - Criminal damage - Disturbance at Station - Domestic x 2 - Drink/drive - Other x 3 - Nuisance/welfare - Suspicious circumstances x 3 - Theft from shops

TRUCAM (SPEEDING):

Trucam will be deployed on a regular basis in the village.

May 2024: 1 x One-hour session in a 30mph zone

1) **3 vehicles** excessively over the speed limit - Top speed **42mph**

June 2024: 2 x One-hour sessions in a 30mph zone

1) **7 vehicles** excessively over the speed limit - Top speed **39mph**

2) **10 vehicles** excessively over the speed limit - Top speed **47mph**

The **30mph** signs were checked before and after deployment and were **clearly visible**.

Please drive with due care and attention . There is no excuse for poor driving!

Thank you to those abiding by the legal safe limit.

CONSIDERATE PARKING INCENTIVE TICKETS (CPI)

May 2024: 0 CPIs were given out in the village during this month

Whilst out and about in Alresford, none were seen at the time of the patrol.

June 2024: 6 CPIs were given out in the village during this month

Drivers are reminded **not to park on junctions and footpaths**, this causes obstruction and danger to the safety of others. These are both offences under the Highway code, which should be common knowledge to any driver.

Thank you for parking safely.

DANGEROUS DRIVING

There has been reports of vehicles speeding down Cockaynes Lane and driving without due care and attention.

Please remember there are pedestrians on Cockaynes Lane and also Ford Lane towards the Creek. Drive to the safety of the Lane. If you see pedestrians please slow down and drive with caution.

People are often walking in thought or conversation and do not always realise there is a car, especially children and animals. Driving at someone at the point of jump scare! is not a considerate measure to take.

Pedestrians- If you are walking down a narrow lane, please be aware of your surroundings and your children/animals of approaching vehicles to avoid any possibility of an accident.

WHO TO REPORT TO FOR PARKING ISSUES/ VEHICLES

DVLA: [Report an untaxed vehicle - GOV.UK \(www.gov.uk\)](https://www.gov.uk)

Deal with Vehicles with No MOT OR TAX on the public highway. DVLA can remove them.

Police will intervene when the vehicle is being driven with a fixed penalty notice.

PARKING EAST- parking.east@colchester.gov.uk

PARKING SERVICES - parking@tendringdc.gov.uk

01255 686969

Bad parking under the highway code.

Police will intervene if the vehicle is a danger to the highway, i.e a complete block likely to cause an accident, where other vehicles etc cannot pass.

Dangerous driving caught on dash cam

If you capture dangerous driving on your dash cam, you can submit it to:

[Essex Police - Extra Eyes \(egressforms.com\)](https://www.essexpolice.com/extra-eyes)

ELECTRIC ESCOOTERS - SEIZURE

After numerous reminders in the last few magazines on the legislation of private E scooters.

We were **still** receiving complaints of a private E scooter being used around the village in an Anti-social manner.

On 08 May 2024 Officers finally caught up with the owner and witnessed the vehicle being used in a public place. It was going to be seized under a section 59, but ended up being seized under section 165 of the road traffic act 1988.

Please be reminded of the following.

Legal position

Electrically powered scooters are classed as a "powered transporter" which are a type of mechanically propelled vehicle. This means the rules that apply to other mechanically propelled vehicles also apply to e-scooters. This includes the requirement that the vehicle is approved by the Vehicle Certification Agency for its construction and use for transport on the public highway. Currently e-scooters do not have type approval, which means they cannot be insured, which means they cannot be used legally in a public place.

Anyone found using one in public will have it seized under section 59 or section 165 of the road traffic act 1988.

For a section 165 - If you do not have a valid driving licence, you can be reported for the offence, which could land you in court.

FRAUD/SCAMS

Fraud/blackmail/scams take place all the time, everywhere. A lot of these calls can just be random, where they don't even know where you live.

For safety – If you are using online platforms like Facebook, Instagram etc always check your privacy settings, so that a stranger can not see who is on your friends list and other

information that they could use to make you think they know you and fool you into paying them.

If you have any doubt of a possible scam and just need advice, please contact me Julia.brandon@essex.police.uk
I am more than **happy to chat** with you, no matter how silly or small you believe it is.

BALLOO - RETIRED POLICE DOG

Meet **Baloo** our Wellbeing dog - Now retired from the frontline.

If you would like Balloo to attend a function, school or



community event in Alresford, please contact me.

Baloo should be making a guest appearance at one of the St Andrew's Church book café/Coffee mornings in the near future, awaiting confirmation.



ST ANDREW'S CHURCH BOOK CAFÉ

As many of you may know, there is a coffee morning at St Andrew's Church on the 2nd and 4th Wednesday of the month.

This is a welcome for all to pop in and have a chat with others in the community over a coffee and slice of cake. They are such a lovely friendly group.

I will be in attendance on the following date if you have any concerns in Alresford, or just want to pop along to say hello.

- WED 14th August 2024:** 10.30-12.00 hours
- WED 11th September 2024:** 10.30 - 12.00 hours
- WED 23rd October 2024:** 10.30 - 12.00 hours

PCSO ACTIVITIES (A few)

- Reported E scooter was seized.
- School parking patrol/village parking patrol.
- Liaising with parking services and other agencies.
- A large amount of PNC,s for vehicles and persons in suspicious activity were conducted, where quite a lot of detail have come to light.
- Numerous intelligence has been gained and submitted

- Investigations and monitoring of hot spot areas have again played quite a large part in the village.
- Knife sweeps have been conducted in various areas.
- Welfare visits/checks were conducted to victims of crime, with security advice given **and** elderly/vulnerable residents.
Extra patrols were carried out in these areas.
- Trucam has been deployed.
- High visibility foot patrols with community engagement in certain areas, including those with reported nuisance or concerns.
- Operation Stronghold- PCSO Brandon and Chairman Frank Belgrove conducted foot patrol around the village, Where Councillor Belgrove experienced a couple of hours of the activities and engagement of the PCSO role. Thank you Chairman Belgrove for sparing your time to come along.

SUSPICIOUS CIRCUMSTANCES

If you see anything that does not look right, report it. Try and get as much information as you can, including registration numbers, which are key to a lot of activity. The more you have, the more chance we have of a positive investigation, with results.

REPORTING INCIDENTS THE CORRECT WAY

Residents are still not reporting incidents when they happen. It is vital that incidents are reported at the time to the above, so the right team can be assigned with a better chance of progress.

To report an incident please **ring 101 or for Emergency 999**
Or report it online <https://www.essex.police.uk/do-it-online/report-a-crime/>

*consciously
clothed*
preloved boutique

A unique, local and conscious service helping you to resell and buy quality pre-loved clothes.

Commit to a long-term relationship with clothes, it's one of the most effective ways to fight fast fashion.

www.consciouslyclothed.co.uk
info@consciouslyclothed.co.uk
07708 441176

ALRESFORD PARISH CHAIRMAN'S REPORT August/September 2024

Community.

There is certainly no shortage of community spirit or community involvement in Alresford. The Parish Council "drop-in" surgery event held in the village hall back in February regarding the quarry proposals had 350 residents and visitors in attendance. The Picnic in the Park on the 8th of June – an event run by volunteers from the Alresford Fete Organising Group, was attended by over 1500 people. It was refreshing to hear so many encouraging comments about the Parish Council from attendees at both of these events, many Councils only receive input from their local residents when something is wrong!

The Parish Council does its best to support community groups and each year grants are awarded to groups that are successful in our annual grant scheme. This year Alresford Colne Rangers FC, the Primary School (PTA), the Autumn Centre and the Beavers (scouts) benefited.

Parish Councillors – Co-option.

Alresford Parish Council should consist of 11 members. Due to the death, in office, of John Housden and the resignation of Alistair Broom two mid term vacancies arose.

It is usual not to hold elections for such vacancies (unless requested by ten of the electorate and agreed by the elections officer) and so a process known as co-option takes place where those that wish to apply to be Councillors are evaluated by existing Councillors and if successful become full Parish Councillors. Two very worthy applicants have now been co-opted they are Kristin Doulai and Courtney Muller, both with impressive CV's and appropriate skill sets. One other candidate had to drop out of the process due to work commitments. The Council is delighted to now have a full compliment of members serving the community.

Highways.

It is a major concern that Essex Highways has still not repaired any of the outstanding jobs relating to missing and loose kerbstones and damaged drains in the Coppice Road area. The Parish Council has intervened twice to carry out kerbstone repairs (although it has no duty to do this). With a budget of around £88,000 to cover staff, most streetlights, grass-cutting, part-funded PCSO, playing field, community pavilion, litter bins, project commitments etc it is very difficult for the Parish Council to find extra money for highway repairs however the Parish Council will continue to press for repairs to be done and to ascertain if we can fund another kerb repair scheme at some stage.

Potholes have been reported in Coach Road and the Parish Council has lobbied our County Councillor to arrange for repairs, some repairs have now been undertaken.

With wet weather followed by a warmer and sunnier few weeks the hedgerows and roadside vegetation has grown considerably, in many instances land-owners are responsible to maintain these hedges and it is so important they do this. The hedge-cutting season commences in September. In the countryside hedges may not be cut between March and August apart from the following exemptions:

- if the hedge overhangs a highway, road or footpath over which there is a public or private right of way and the overhanging hedge obstructs the passage of, or is a danger to, vehicles, pedestrians or horse riders
- if the hedge is dead, diseased, damaged or insecurely rooted and because of its condition, it or part of it, is likely to cause danger by falling on to a highway, road or footpath

- if the hedge obstructs or interferes with the view of drivers or the light from a public lamp.
- If the hedge borders a residential garden (whether roadside or not).
- Essex Highways should attend to most carriageway hedging that is not privately owned.

There are certain other exemptions – please see DEFRA guidance online or visit the following websites www.hedgeline.org.uk or www.protectthewild.org.uk.

Weed clearance along kerbs should be carried out by Tendring District Council twice a year. As pre-emergence weedkillers are no longer used weeds grow quickly and the Parish Council does intervene and our contractor attends to the worst areas.

Cockaynes Lane (safety)

The application to designate the rural part of Cockaynes Lane as a "Quiet Lane" is proceeding well. The next phase is the legal requirement to hold a consultation event so that anyone in the village can attend to be informed as to what is involved. The event is scheduled to take place from 6.30pm until 8.30pm in the Village Hall on Wednesday the 11th September 2024. In attendance will be myself, County Councillor Alan Goggin and an Essex Highways Officer. This will not be a formal meeting and is for discussions and updates on Cockaynes Lane.

Schools

A number of parents have approached Councillors regarding the current schools placement issues. Our primary school is oversubscribed and a number of local residents have encountered difficulties in obtaining primary school places for their children. Some children have been allocated places as far away as Fingrinhoe. The Parish Council has voted to lobby Essex County Council regarding the issues and we have placed the matter with our County Councillor. The issue of adequate school places was raised by the Parish Council prior to the new developments in the village and assurances were given by the County Council that sufficient capacity would be available at the village school to take account of the increasing village population.

Policing

Alresford has one of the lowest crime and anti-social behaviour rates amongst the villages in the Tendring district. This can be explained because of several factors, the presence of a PCSO, pro-active residents who report such incidents and the judicious use of CCTV. We are certainly not without crime and anti-social behaviour though and sadly some of that is caused by those living within the community. The Parish Council has a very good relationship with Essex Police and recent burglaries and some criminal damage is being fully investigated and intelligence is being gathered. If you have any information or witness anything suspicious please contact Essex Police either online, the 101 number or in emergency situations 999.

Update on Projects

Two key projects for the Parish Council are the installation of a public toilet block for the community playing fields and for solar panels to be installed on the Pavilion. Both projects are progressing, albeit slowly. Obtaining quotations for the installation of drainage for the toilet block has been difficult, only one contractor to date has been located with the necessary certificates. The solar panel installation is awaiting further funding – the Council has £5000 budgeted and is awaiting the outcome of a grant application for £8000.

Finally,

It is so good to see the next generation of community volunteers rising to the many challenges we are all faced with. Younger Councillors with fresh ideas have stepped forward and their input will greatly benefit the community.



Councillor Frank Belgrove
Chairman Alresford Parish Council

COCKAYNES LANE QUIET LANE CONSULTATION EVENT

Alresford Parish Council in conjunction with County Councillor Alan Goggin have put forward a proposal to have the rural part of Cockaynes Lane designated a "Quiet Lane". A consultation event is necessary as part of the process and a Highways Officer will be in attendance together with Cllr Goggin and the Chairman of The Parish Council Frank Belgrove. All are welcome.....this is NOT a formal meeting!

A Quiet Lane designation is about raising awareness of the different users of a narrow and rural lane and is simply about safety and the sharing of a lane. No vehicles will be stopped from using the lane and businesses will not be affected.

For any queries on the consultation event please e-mail The Parish Council Clerk alresfordpc@outlook.com or telephone 01206 615117.

ALRESFORD FETE ORGANISING GROUP (Pages 12,13 & 14)

The Alresford Fete Organising Group (AFOG) were proud to bring, what is now, the annual Picnic in the Park on Saturday 8th June.

The skies were a little overcast to start with but the sun soon broke through which led to a fantastic afternoon of families and friends coming together to enjoy each other's company on the playing field.



ESSEX LIBRARIES

<https://library-events.essex.gov.uk>

Sign up to the Summer Reading Challenge The Summer Reading Challenge has started!

The challenge encourages children to explore different genres of books and take part in fun and creative challenges throughout the summer. The challenge is a great way to get children to their local libraries and enjoy reading. Get yourself down to the library and sign up. [Find out more](#) about this year's theme.



Feeling confident starting School for the first time! Is your little one starting school for the first time?

Don't forget to take part in our Ready... Steady... Go To School Challenge!

Kids will complete fun activities to help them practise skills and gain confidence ready to start school. They'll receive stamps in their special booklet along the way and get a certificate when they finish! Join in for free at any Essex Library! [Find out more about this preschool challenge.](#)

Meet families going to your new School in September!

Have you been to your local Big School Meetup yet?

Come along for free and meet other families with kids starting school for the first time! Meet, chat, play, and enjoy storytimes and activities together at your local library. The whole family is welcome!

[Find out when your free local meetup is!](#)

Frank Belgrove, Parish Council Chair, officially opened proceedings and we were treated to an afternoon of music, entertainment and activities for all ages.

Entertainment was provided by a brilliant display from the local Tai Chi group and then the absolutely superb dancers from Rebecca's Dance Academy. The always brilliant, Silence the Sirens provided live music throughout the afternoon.

WyvernWood brought along characters to meet and greet everyone. Alresford Primary PTA supported the day with the BBQ and the very entertaining coconut shy. The Alresford Bikers came along with an impressive display of bikes ranging from very new to very old. Competition was fierce at the 'Ozzie Rules' Welly Wanging to hold the title of Champion Welly Wanger. The Wivenhoe Fire Service brought along their engine and children had great fun setting off the lights and siren. The ever-popular carousels were provided by Mr Little. We saw some amazing faces painted by Jumbletime Face Painting (including our very own Rector, Rev Andrew Fordyce!)

As well as entertainment on the field, there was plenty to see inside the village hall, with stunning displays from the Calligraphy Club, local artists and Alresford Camera Club. The Local History Club had a display showing carnivals and fetes from yesteryear, including the original outfits worn by the carnival queens and princesses.



We were lucky enough to have one of the previous carnival princesses come along and share her memories from the 1978 carnival!

Teas, coffee and cake (generously donated by the local community) were served, in the village hall, by volunteers.

An event like this does not come together without the hours of hard work put in by volunteers and generous donations by local businesses. In no particular order, these were:

- Alresford Art Group
- Alresford Bikers
- Alresford Calligraphy Club
- Alresford Camera Club
- Alresford Carpet Bowls Club
- Alresford Colne Rangers
- Alresford Family Pizza
- Alresford Fish & Chips
- Alresford Local History
- Alresford Parish Council
- Alresford Post Office & Convenience Store
- Alresford Pre-School
- Alresford Primary PTA
- Alresford Spar
- Alresford Village Stores
- Alresford W.I.
- Becky King - Tea & Cake
- Bellets
- Carousels by Mr Little
- Cavadino Hair
- Decorated cups by Jellybean Vinyls
- CSH Environmental
- Direct Animal Feeds
- Ernie Osborne - Ozzie Rules Welly Wanging
- Jumbletime Face Painting
- Khusbu Indian Takeaway
- La Pooch Dog Groomers
- Nicola Lockwood Pugh/Hayley Milburn - Lucky Dip
- Raffle - Ann Ingram and on the day, Andy Pyman, Peter Wade and Sue Giles
- Rezza Turkish
- Sage Hair Studio
- Sam King - Photographer and Film in Hall
- St Andrew's Church
- The Autumn Centre
- The Kitchen & Bathroom Store
- Top Glass
- Utility Warehouse
- Whip it Like Webber Ice Creams
- Wivenhoe Fire Service
- Wyvernwood
- A benefactor who wishes no publicity

We are grateful, as always, to our friends at the Alresford Colne Rangers Football Club for their mammoth support with the preparations on the day as well as running the Pavilion Bar. They also hosted an after party with live music from Punch It Chewie and this was a great way for the festivities to continue.

Thank you, Alresford Village, for coming together, as a community, with your blankets, chairs, gazebos and picnics to make this an enjoyable day and huge success. Numbers surpassed last year and this is testament to the amazing community-spirited village we all live in! All monies raised (after expenses) are fed back into the village

by way of the annual 'Christmas Tea for the over 75s' and local village groups via a grant scheme – look out for further details on how to apply for a grant.

Finally, thank you to the hardworking volunteers Courtney



Muller, Jo Bradley, Emma Thompson, Kevin Hoskins and Russell Milburn who work tirelessly, all year, to bring this event to the community. Like many of our local village groups and organisations, we are entirely volunteer-led and, we cannot continue without support from the local community. We would love to have more people get involved – and don't



worry, we won't take up too much of your time. Just come along to one of our monthly meetings to see how you can contribute or share your ideas. All are welcome.

Alternatively, you can email AlresfordFOG@gmail.com or contact us, via our Facebook page <https://www.facebook.com/AFOGevents>





ALRESFORD VILLAGE SHOP

Colchester Main Road
01206 828169

Extended Opening Hours:

Monday - Saturday: 5.00am- 9.00pm

Sunday: 6.00am - 8.00pm

New, more variety stock available including a wide range of beers, wines, spirits, groceries, confectionery, soft drinks etc.

Hot food: sausage rolls & pasties

LOOK OUT FOR OUT SPECIAL OFFERS

MyHermes Parcel Label Printing, Send & Return Service also Collection Point Printing Service & Payment Facility available in Store

Agents for Danes Launderers & Dry Cleaners

Cash Machine

Newspaper Delivery

Customer Car Park



www.simplyhaberdashery.com

Check out our vast range of products and low prices

Fabrics, quilting accessories, Braids & trimmings, buttons, Cords, Elastics, Fasteners, Sewing & mending accessories, Sewing machine accessories, Threads, Velcro, Ribbons, Zips, Tapes and much more....

Free delivery or shipping!!



01206 581177

info@simplyhaberdashery.com

Paypal and all major credit & debit cards accepted

Direct Animal Feeds

01206 827035

The complete range of animal feeds, bedding and accessories for

Horses Dogs Cats Small Pets Poultry

Opening:

Mon - Fri: 9am - 5pm

Sat: 9am - 4pm

Local delivery available

Email: directanimalfeeds6@gmail.com

Maggie: 07885082281

Unit 3, Heath Farm
Cockaynes Lane

Alresford
C07 8DA



The Company You Can Count On

Since 1981, Abacus Shutters has provided London and the Home Counties with a wide variety of fire and security roller shutters, doors, grilles, gates and barriers.



Whether it's residential, commercial or industrial, whether your concern is security or fire safety, Abacus Shutters has got you covered. For more details, get in touch with our friendly staff!

Abacus Shutters Ltd.

E-mail: sales@abacusshutters.co.uk

Tel. +44 (0)845 644 1225

OOH Tel. +44 (0)7989 600 675

Website: www.abacusshutters.co.uk



Blue Onion Catering

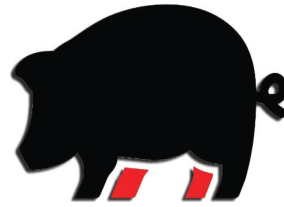
FREE delivery in local area

- * All occasions catered for weddings, funerals etc
- * Quality buffets & homemade dessert
- * Delivered to your venue or home
- * Afternoon teas delivered to your venue



01255 861617
07738 616816 or 07795 441635

www.blueonion-catering.co.uk
blueonioncatering@hotmail.com



BECKY'S BUTCHERS

Family Run Butchers / Local Delivery Service

Quality Meat / Shop in store or online

07720833207
beckysbutchers@gmail.com
beckysbutchers.co.uk

Badley Hall Farm, Great Bromley,
Colchester, Essex CO7 7UU

Open Wednesday, Thursday Friday and Saturday
9am - 4pm

Local Beef, Lamb, Pork, Chicken and Game

Award Winning Sausages / Handmade Pies

BBQ Meats / Frozen Fish

Eggs, Jams and Chutneys

Christmas Turkeys and much more

MARK
BRUMPTON
TREE SERVICES



TREE SURGEON

Reshaping
Reducing
Surgery Work
and Clearance

FULL INSURANCE

For Free Estimate and Advice

TELEPHONE:
01206 825498
Or 07885749934

Roxburgh
Colchester Main Road
Alresford
CO7 8DG



SALES SERVICING REPAIRS HIRE

OF

GARDEN MACHINERY AND EQUIPMENT

*

HEDGE TRIMMERS – CHAINSAWS - STRIMMERS

WALK BEHIND MOWERS – LAWN SCARIFIERS

CHIPPERS – SHREDDERS – ROTAVATORS

RIDE ON MOWERS

*

UNIT 1 FRATING HALL FARM, CHURCH ROAD,

FRATING, COLCHESTER, CO7 7HD

TELEPHONE: 01206 250990/07860 411024

WEB: www.gbfarmservices.co.uk

EMAIL: gbfarmservices@btconnect.com

ALRESFORD POST OFFICE & CONVENIENCE STORE

55 Station Road, Alresford
Essex, CO7 8BX

Opening Times:

Monday - Saturday 8am - 7pm
Sunday 8am - 4pm

FREE BANKING SERVICES

On cash withdrawals, cash and cheques deposits
for the following Banks:

Barclays, Halifax, HSBC, First Direct, M & S Bank, Lloyds
Nationwide, NatWest, Smile, Santander, The Co-op Bank,
TSB, Royal Bank of Scotland, Cahoot, Bank of Ireland,
Clydesdale Bank, Yorkshire Bank, CAF Bank

**DON'T FORGET...Your local Post Office offers
many other services including:**

'One4all' multi-store cards

**EVRI and Amazon
Returns/Customers Drop Off Service**



Hypnosis Centres

What We Do: At Anthony Wilson Hypnotherapy, we specialise in transforming lives through expert hypnotherapy. With over 35 years of experience, we're dedicated to helping you overcome challenges and achieve a balanced, fulfilling life.

Services: Specialising in phobia treatment, self-esteem enhancement, confidence building, anxiety and stress relief, depression management, smoking cessation, and weight loss programs.

Why Choose Us: Unlike our competitors, we combine decades of experience with a personalised approach, ensuring each client receives tailored treatment for their unique needs.

Innovative Techniques: We use cutting-edge hypnotherapy techniques to ensure effective and lasting results.

Personalised Care: Each session is customised to address your specific goals and challenges.

Friendly and Personable: We're not just hypnotherapists; we're your partners in wellness, right here in Essex and Suffolk.

Appointments available in Alresford

Please contact us on 07775630085 or
www.anthonywilsonhypnotherapy.com



SJ conversions

Builder

Free Estimates

EXTENSIONS

LOFT CONVERSIONS

NEW KITCHEN FITS

NEW BATHROOM FITS

GARAGE CONVERSIONS

07899045847

01206824752

stuartjohnbush@gmx.co.uk

I. BLANCHETTE PLUMBING AND HEATING

Bathroom Installations
Ceramic Tiling
All Domestic Plumbing
Central Heating Systems
Boiler Upgrades
Boiler Maintenance Repairs
Power Flushing
Under Floor Heating
Pressurised Water Systems

Established 30 years
Reliable and Friendly Service

Tel: 01206 827464

Mobile: 07967 533 314

GASsafe reg no: 64249

ian.blanchette@talk21.com

Your local solution for fully fitted blinds & shutters

We offer a vast range of quality products to suit your needs.

With over 20 years experience in the trade, our installations are to the highest standard.



Shutters
Rollers
Verticals
Romans
Perfect Fit
Venetians
Intu
Day & Night
Pleated
Skylight
Motorisation
VS2 Slide



Call Us Today For Your **FREE QUOTATION**

Tendring
Blinds & Shutters
01255 474241
www.tendringblinds.co.uk



M.D. Spackman Building Services

Brickwork~Groundwork~Extensions
Fencing~Paving~Maintenance
Certified Digger Driver / Dumper Driver

CSCS Registered

Call Mark on 07811 869316 or 01206 827995
Email: thespackmanhouse@btinternet.com

Alresford, Colchester, Essex

Garden and General Maintenance Services

WALKER WORKS

Ryan Walker
01206 824080
07887 746399

M. J. GREEN

TRADING AS M. J. GREEN TREWORK (WIVENHOE) LTD

Established 1977

41 VANESSA DRIVE, WIVENHOE
ESSEX CO7 9PB

TELEPHONE 01206 825503
(24 hour emergency service)

Mobile phone numbers:

07786 632002 • 07771 638064
07771 638067

- Tree felling contractor
- Surgery, coppicing
- Reshaping, reducing
- Hedge cutting, grass cutting
- Rough gardens cleaned and cleared
- Stump grinding
- Fencing supplied, erected and repaired
- All rubbish taken away
- Suppliers of firewood, logs

Free estimates and advice

Full insurance cover • N.P.T.C qualified



FOOT CLINIC

Trish Parker MAFHP MCFHP MINA • 17 Years Experience
Foot Practitioner of Year Winner 2019

CONSULTATIONS • CLINIC OPEN IN BRIGHTLINGSEA
5 DAYS A WEEK • DIABETIC PATIENTS WELCOME

PROFESSIONAL TREATMENTS COVERING ALL FOOT DISORDERS
Removal of Corns • Hard Skin • Ingrown Toenails • Infections
Fungal Infections • Athlete's Foot • Thickened/Deformed Nails
Verruca's • Cracked and Painful Heels • Fallen Arches



Call Trish Now To Book
An Appointment

Prices From Only £20

01206 307884 . 07808 938563

Clinic Held at: 66 Seaview Road, Brightlingsea



OCM
Orchard Cottage Montessori
Nursery Ltd
Happiness and learning grow together

Ofsted
Outstanding
Provider

- Outstanding nursery education for girls and boys aged 2-5 years
- Government funding accepted for 3 and 4 year-olds
- Set in beautiful, secluded grounds in the village of Alresford



For more
information
contact us
today

www.orchardcottageмонтessori.co.uk

01206 825607

Email: o.c.m@btconnect.com

Elite Bathroom Installations Ltd

Bathroom Installations



Jack 07818 034032
Chris 07990 667039



Plastering / Decorating
Electrical Work
Flooring / Tiling
Carpentry
Plumbing

All work undertaken
References available
Fully Insured
Full fitting Service

Elite bathroom installations Ltd is a partnership of JFS & CW Building Services



Bathrooms • Kitchens • Plastering
Tiling • Carpentry
Decorating • Landscaping
Local, Reliable, Experienced

Free Quotations

Call Chris on: 07990 667 039

33 Coach Road, Alresford



Heating, Plumbing,
Electrical and
Renewables Specialist

Friendly and Trustworthy
Local Engineer

Please Call Jack on
01206 820599
07818 034032

17 Heath Road
Alresford
Essex
CO7 8DT

SIBBONS

PLANT & TOOL
HIRE

TRADE/DIY
STORE

Your local hire and trade centre!!

Family run since 1964.

Open Mon - Fri
7 - 4.30

PLANT & TOOL
REPAIR

Tel: 01206 823448
Fax: 01206 825266
sales@sibbons.co.uk
www.sibbons.co.uk



Elegant WINDOWS,
Beautiful DOORS
& Stylish CONSERVATORIES



As seen on TV



Installed according to the Tricept
Better Fitters Code Of Practice

Suppliers of TRICEPT Multipoint
Locking windows, doors and
conservatories. Fascias, soffits
and cladding also available.

Wherever you are we deliver quality



HOME IMPROVEMENTS

01206 823903

www.aandk.co.uk

5 minutes from Essex University on the Main Road in Alresford

A&K House, Main Road, Alresford, Colchester CO7 8DB

IAN LONGHURST BUILDER

Established 1982

WORKING IN WIVENHOE FOR OVER 30 YEARS!

All external work inc. Brickwork and Roofing

All internal work inc. Kitchens and Bathrooms

Free Advice and Estimates

Speak to Ian or Tina:

☐ 07484 724262

ianlonghurstbuilder@outlook.com

SMALL SCALE SKIPS



1½ & 2 YARD MINI SKIPS
COMPETITIVE RATES

WE DELIVER

SAND BALLAST STONE MOT TYPE I & II
SOIL CRUSHED CONCRETE

01206 822770 OR 07802 265712

PHONE ANYTIME

wjr

Mechanical Services



COMMERCIAL & DOMESTIC PLUMBING



Free, no obligation quote



Boiler renewals and servicing



Vaillant approved installer



Bathroom design & installation



Water main repairs/replacements

Alresford based – call Russel on
07971 519912



ALRESFORD BIKERS - OUR SHORTEST SUNDAY RIDE EVER!

We were very kindly invited to take part in Alresford's Picnic in the Park on 8 June, as exhibitors. We trawled our members as it is peak riding time for us, and our riders came up trumps, again! On the day we had to be there early before everyone else set up and we would have to traverse their stand areas - not a great way to win friends! So, at 0930 a couple of us turned up at the Village Hall car park, and entered the site. Chris came in his car with a couple of Gazebos - we've been caught out before! Then he rushed home to get another bike too. We were clearly earlier than many others, and so we were quickly shown where to go, and started to put our display together. Soon we had the Gazebos up and a few bikes out. We decided on a straight line, since we had the space to do so without tripping anyone else up, and we would then be providing the "rear wall" effect on the site. Then the bikes really started rolling in. I was delighted how many we had - 14 bikes, all different, and all gleaming, you could smell the polish yards away. Our rider Phil brought four of his, but needed some very keen Gary assistance to get them all there. Nick provided another two, in two trips, and of course we had to reverse all this at the end, and with Chris rushing off to get his car to collect the Gazebos again, at the end of the day. We lined the bikes up and got ready for the public opening. The weather was cool, to say the least, standing about in leathers and not a lot else, and suddenly windy. It looked a bit dodgy for picnics. We had to stake the Gazebos down! There is only one thing to do in those circumstances if you are a biker - tea and cake! We trundled into the hall where the lovely ladies and gentlemen served us smashing hot tea, and cracking good cakes, and we waited until Picnic time. Since we had organised ourselves into teams, we must have been a constant relay presence at the tea and cake hatch!

Anyway, much later, two ice cream vans came on site together, and given the weather at the time, we thought that might be a bit of overkill, but as it turned out, they could have used another one! On the horizon we observed a lighter patch in the heavy cloud..... then some blue sky, then the wind dropped too! Clearly it was time for more celebratory tea and cakes! We completed another lap of the tea and cake circuit and the sun came our way too, and at almost the same time members of the public started to pour into the site, and the whole thing was suddenly under way. To ensure everyone's safety, and for a well deserved show-off, a Fire Appliance turned up; nice to see Trumpton and no fire! It turned out as a lovely summer's afternoon, and the park filled with people, a great credit to the organisers. Very quickly there were people everywhere, having picnics and drinks and loads of fun, and children running all over the place having a high old time. We had come very early for safety, letting all the bikes cool right down so that no little fingers would get burnt if they prodded shiny bits that were hot. There were enough kiddies running about to make this valid too, and several of them had a little sit on many of our bikes. One of the best bits of the day was seeing the faces of the little ones on bikes stretching out to reach handlebars. I have a photo of me doing that, when I was 3. Well over sixty years later I'm still at it! Soon it was time for yet another lap of the tea and cake circuit, as we do have a reputation to live up to, before all the chocolate sponge was eaten by customers! All afternoon we had a stream of visitors, many of whom had been riders too, back in the day. It was lovely to share our passion with like minded people, some with stories even funnier than some of ours too, and to see so many familiar faces we hadn't seen for ages. What a great day!



So, what did we bring? A mixture of bikes between 2 and 99 years old, from Italy, Germany, England, and Japan, including Tourers, Sports Tourers, Off-Roaders, Roadsters, Commuters, Utility, one out and out Sports bike, some restored, some unrestored but running, and all loved, polished within an inch of their lives and maintained for many years. A bit of everything, from Acetylene lights to DCT gearbox, from rubber block brakes to anchors that could stop a charging Rhino; and from a bike that might hit 40mph downhill on a good day, to one that can treble that in third gear, easily. And I am very delighted to say, they were all ridden in and out. Notably we also had riders from Alresford, Wivenhoe, Marks Tey, Harwich and North Weald (good to see you Dave!) too. Thanks to AFOG for organising it, doing all the hard work, and just making this event happen, and inviting us! I know this was our shortest Sunday Ride ever, but we like to think it was an important one for us to do. And it was a Saturday!

If you want to join us and come for rides out, socialise and learn about bikes, bikers, biking, and all that stuff, including good places for tea and cakes too of course, we meet at our HQ, The Pointer Inn, where our hosts Sam and Neil welcome us on the second Friday of every month at 8pm. Just turn up!

Al Gillard



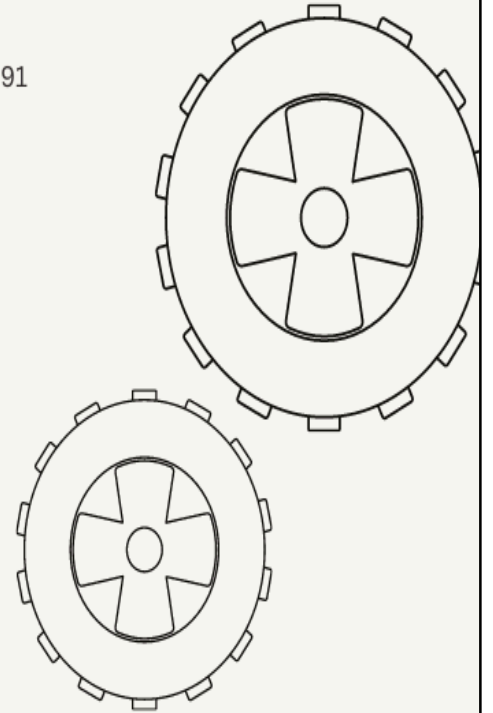
CANBERRA CARRIAGE COMPANY

**FREE COLLECTION AND
DELIVERY
FOR ALRESFORD
RESIDENTS**

Established family run business since 1991

MOT'S, SERVICING AND REPAIRS
DIAGNOSTICS
AIR CONDITIONING SPECIALISTS

- 📍 Unit 5. Brunel Business Centre. Clacton-On-Sea
- ☎ 01255 426394
- ✉ Canberracarriage@btconnect.com



ALRESFORD FISH & CHIPS

(Kebabs and Burgers)

UNDER
NEW
MANAGEMENT

OPENING TIMES
11.30am - 10.00pm
7 DAYS A WEEK

Telephone orders welcome

☎ 01206 616360

📍 51 Station Road CO7 8BU

ORDER ONLINE

At alresfordfishbar.com

Delivery or collection by



Delivering

UP TO 7 MILES FROM
ALRESFORD



USEFUL CONTACTS

ALRESFORD PARISH COUNCIL CONTACT DETAILS

The Parish Office, The Pavilion, Ford Lane
Alresford CO7 8AT

Council meetings are held at the Pavilion on the first Wednesday of every month at 7.30pm. Public and Press are welcome. Agenda & Approved Minutes on website

Website: www.alresfordpcessex.uk/

Facebook: Alresford Parish Council (Parish Council only)/The Pavilion & Playing Field - Alresford Essex

Twitter: @alresfordessex

Chairman: Cllr Frank Belgrove - 01206 823739

Vice-Chairman: Cllr Ernie Osborne

Cllr Linda Belgrove

Cllr Simon Clark

Cllr Gary Scott

Cllr Ann Wiggins

Cllr Vincent Dalzell

Cllr Bina Swash

Cllr Julia Claremont-Brown

Cllr Courtney Muller

Cllr Kristen Doulai

District Council Tendring

District Councillor Ann Wiggins - 01206 825153

Email: cllr.awiggins@tendringdc.gov.uk

District Councillor Gary Scott - 01206 820769

Email: cllr.gscott@tendringdc.gov.uk

County Council Essex

County Councillor Alan Goggin - 01206 308023

Email: egog@btinternet.com

Parish Clerk - The Proper Officer

Matt Cooke - 01206 615117 (Answerphone 24/7)

Email: alresfordpc@outlook.com

Responsible Finance Officer & Assistant Clerk

Angela Baxter - 01206 615117 (Answerphone 24/7)

Email: rfopcessex@outlook.com

ST ANDREW'S CHURCH CONTACTS

Rector: Rev Andrew Fordyce - 01206 920848

Email: rector@tenpennyvillages.uk

Associated Priest: Rev Pauline Hart - 01206 826318

Email: assocpriest@tenpennyvillages.uk

Curate: Janine Wilde

Email: curate@tenpennyvillages.uk

Churchwarden: Lyn Bull - 01206 827146

Email: stachurchwardens@tenpennyvillages.uk

Bookings for the Hub: Meg Burdus - 01206 820618

VILLAGE HALL

Chair: Russell Milburn

Email: alresfordvillagehall@gmail.com

Contact No: 07548 742796



DOES YOUR CHILD HAVE A BIRTHDAY COMING UP?

WHY NOT TAKE A LOOK AT ALRESFORD VILLAGE HALL?

Weekend sessions available,
08:30 - 12:30 or 13:00 - 17:00

There is room for a 12ft x 15ft bouncy castle

For further information, please email
alresfordvillagehall@gmail.com
or telephone 07548 742796

POLICE

PCSO: Julia.brandon@essex.police.uk

To report an incident please ring:

101 or for Emergency 999

To report a crime online:

<https://www.essex.police.uk/do-it-online/report-a-crime/>

COPY DEADLINE

The editorial and advertising deadline for the August /September 2024 edition will be:

8th September 2024

ALRESFORD ADVERTISER CONTACT DETAILS

EMAIL: alresfordadvertiser@gmail.com

TELEPHONE: 01206 825739

ADDRESS: 22 Station Road, Alresford, CO7 8BT

ALRESFORD WI
Warmly invite you to a
FASHION SHOW
 BY
EDINBURGH WOOL MILL
At Alresford Village Hall
FRIDAY 22nd NOVEMBER
at 7.30pm
ADMISSION INCLUDING
REFRESHMENTS £3.00
RAFFLE
For further information
Contact:
Chris James on 07977 495382 or
Allyson Salmon on 07742 918062



MOVIE NIGHTS

Will be starting again in Alresford Village Hall

Dates for your diary:

25th October

29th November

13th December

Film titles & times will appear in the next Advertiser and on notice boards

Alresford VH Management Committee

Join St Helena Hospice for the return of Midnight Walk this September!

St Helena Hospice is delighted to announce the much anticipated return of Midnight Walk on the evening of Friday 27th September 2024 after a five year hiatus! Sign up is now open and hundreds are expected to join the walk in aid of St Helena Hospice.

Join the biggest party of the year and choose from two new routes which will be starting and finishing at the home of Colchester United, the JobServe Community Stadium. Dress in your brightest colours as this year's theme is a neon party and take on either the 4 mile or 9 mile route to the north of Colchester city centre to raise money for local people facing incurable illness and bereavement.



Anyone aged 11 or over is welcome to take part and we invite everyone to join us, whether you're walking yourself, as a group or family, with your friends, or as a couple. All are welcome!

By taking part in Midnight Walk you can enjoy a fun night out and help St Helena Hospice support more people in our local community, to live their lives with compassion, dignity and choice until the very end.

Sign up now at www.sthelenahospice.org.uk/midnightwalk24

St Andrew's Church, Alresford
Songs of Praise
 22 September, 4pm
 If you would like to stay for afternoon tea following the service, please contact St Andrew's Church office by email or phone:
 admin@tenpennyvillages.uk
 01206 826376
 We would love to see you there.
 tenpennyvillages.uk

IAN DIMMOCK

It is with great sadness that we mourn the loss of our dear friend and fellow volunteer Ian Dimmock.

Ian was part of a group of villagers who were instrumental in the continuation of the Alresford Advertiser back in 2015 when the late Michael Hester stepped down as editor. He became an integral part of the magazine becoming not only a committee member but also a deliverer until fairly recently when ill health prevented him from continuing.

Ian will be greatly missed by all who knew him and our sincere condolences go to Matthew, Christopher and their families at this very sad time

Hayley, Russell, Mary and David
 Alresford Advertiser