

# THE ALRESFORD ADVERTISER OCTOBER/NOVEMBER 2022

Established 1970

## IN MEMORY OF HER MAJESTY QUEEN ELIZABETH II 1926 - 2022



As a nation we are in a reflective mood having witnessed the end of the Second Elizabethan age.

As a village, our mood will reflect the mood of the nation and the commonwealth as we process the enormity of the passing of someone who embodied a life of public service.

Several years ago, I was invited to the commemoration of the 100th anniversary of the Diocese of Chelmsford. The Cathedral was packed but intriguingly there was no start time for the service. The service would begin when the Queen and the Duke of Edinburgh arrived - we were setting our clocks to Her Majesty's timing. As the moment arrived, a hush descended upon the cathedral - if we

were on the street there would have been cheering but because we were in a place of worship - silence.

Like everybody else I strained to catch sight of our Queen and yet again she had chosen to wear a statement colour, so was easy to spot. As she walked through the Cathedral in near silence, smiles broke out as she walked and sat down. The service proceeded with a sense of joy and dignity as we savoured her presence.

As we learn to live within a new landscape, the grief we have for the loss of Queen Elizabeth II will also stir up other griefs. So many of us have "set our clocks" to Her Majesty - whether it be the Christmas Day address or waiting for her intervention and comment in moments of national significance. We remember her calm presence during the pandemic and the power and example of her isolated grief at Philip's funeral.

A few months ago, I was struck by a palace statement that addressed Her Majesty's load. At 96, recently widowed and recovering from covid Her Majesty would **only** be doing "light duties".

As we move from the second Elizabethan age we will have to get used to living without the example we have "set our clocks by". When it comes to public service, we have an example of seven decades impeccable service. As we reflect on all that was good, all that we have been blessed by, I think we would do well to note that it was her faith that was a constant resource to her and one that enabled her to act generously to all.

May the God of peace walk with you in this season as we grieve but also give thanks and could I suggest that we reflect on all who so graciously contribute to public life, whether heavy or "light". We remember the royal family in our thoughts and prayers and pray for King Charles III as he seeks to serve in these challenging times.

At this time of change for the Nation, we look for constants and note her majesty's faith gave her a constant that steered her life of service. May the constancy of God's love be our guide in this season. Let's commit to travel well together, be kind and serve one another.

Every blessing

Rev Andrew Fordyce MBE

## ALRESFORD ANGLING ASSOCIATION

Est. 1968

Hello again to all our members and a welcome to any prospective members that would like to join our angling club. All our new members have settled in and are enjoying the benefits of the 5 lakes that make up the club's waters. Within a short period of time of joining all our members realise that it is the lakes surroundings with their abundance of wildlife that make fishing so enjoyable and relaxing. Although sudden downpours of rain, thunderstorms and strong winds do create reasons to doubt one's sanity at times.

Life in all the lakes is at an abundance at present with shoals of fry in the margins of all the swims. At this moment in time they are so small that identifying them is almost impossible, but they are a sure indication that the waters are clean and healthy. Most of the waterfowl have hatched and fledged their young with just Swans caring for their Cygnets at present.

All of the hard work of clearing dead undergrowth, Brambles, Nettles etc. through the winter months has proved its worth with an abundance of Foxgloves at the end of Bramley Lake, along with reeds and rushes around the margins. Arthur Bareham Lake, affectionately known as "the pit" has started to show a re-occurrence of these plants around the edges.

The club's matches have progressed well with some of the winning catches reaching up to three figures. Silver fish have been in abundance along with Chub and Tench coming to the scales. Carp, Bream and Tench have been giving some anglers a really busy and enjoyable days at Alresford pit lake. The Carp have been very shy to take Boilies but seem to enjoy Sweetcorn and Maggots and presentation is a key to success also. Could all members please read the match fixture list along with notices on gates to avoid arriving for a planned day to find a match is being held on that lake.

The club still has vacancies for new members and we would like to fill our books this season. We have become a club whose members are keen about their sport and look to the welfare of the club and its surroundings. We are still progressing with the purchase of the Grinsted Orchard Lakes and to retain these 30+ acres as a sanctuary for our members plus the wildlife that inhabits it for future generations. Once again, a big thank you for all the support you have shown the club and its committee to enable this to purchase to proceed. Please contact **Jim Martin on 07786882064** to receive a membership form

It is hoped that during the next few weeks we will organise a Nature walk around the Orchard complex for local pupils attending Alresford School. Hopefully this will generate a love of the outdoors and could lead to future anglers of our club. Once we have achieved the first walk with all its accompanying paperwork we will hope to progress to fishing events.

As always, enjoy your fishing, stay safe and look out for one another.

Tight Lines.

Mike Day (Hon. Secretary)

## ALRESFORD CRAFT & FARMERS MARKET

Alresford Village Hall  
Ford Lane CO7 8AT

1<sup>st</sup> October 2022

5<sup>th</sup> November 2022

3<sup>rd</sup> December 2022

9am - 12 noon

A variety of food and craft stalls

Free Admission

Free car park and disabled facilities

For updated information, please check the Alresford Craft & Farmers Market Facebook page



Movie Nights are returning to the Village Hall, the first of which will be on Friday 2<sup>nd</sup> December (see poster ad in this issue)

To observe the rules of the cinematic industry, entry to Movie Nights will be by a no cost ticket, but donations to cover the refreshments served will be welcomed.

For those people holding tickets for the April 3<sup>rd</sup> 2020 event that was cancelled due to Covid – your donation is considered as made.

Dates for Movie Nights in 2023 planned so far, are 13<sup>th</sup> January and 10<sup>th</sup> February

## COMING UP....?

For further up and coming events in the Village, please see pages 12 and 13

## RIVER

A river I am, yes that's me, a body of water running so free.

I toss and turn and I have a bed, but you can in me lay your sleepy head,

A haven for fish and bugs galore, a breeding ground yet so much more.

I sweep through the land so clear and fast, through so many villages and towns I pass.

From a babbling brook and a narrow creek, a calming lake but it's me you seek.

That stream of water so fast and pure, where you can just paddle or so much more.

Take out a yacht or maybe a boat, or a pink lilo on which to float, a paddle you may bring but please remember just one thing.

I may seem calm and peaceful for sure but there are dangers upon my shore.

A river I am, yes, that's me, a calming sight and one of glee.

But don't take me for granted, I am not always kind, an unseen danger in me you may find.

So please when you see me think not once but twice, I may look serene but I'm not always nice.

Beneath the waters oh so deep, are reeds and weed, on you I can creep.

I have more strength than you will know but please don't let me show you so.

I can drag you down so no breath you can take, so treat me with respect for goodness sake.

But I am also calm you see, where you can relax and be so free.

That double-edged sword from friend to foe, so just beware and watch how you go.

I am there for fun and frolics galore, a natural source and so much more.

I can be big, and I can be small, I am famous and not known at all.

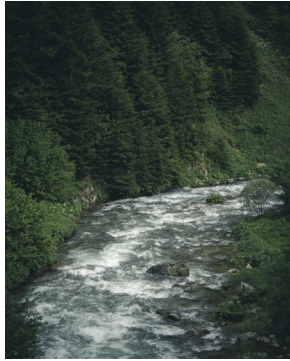
I wind myself through cities and towns for I am a river and I have no bounds.

I can be forbidding all murky and deep and crystal-clear water over pebbles I sweep.

I have many names from The Thames to The Nile and flow through earth mile after mile.

I have a mouth, but I cannot speak it is my passage to the ocean I seek.

A river, I am, yes that's me, until I expand into the sea.



September 2021 © Melanie Newman

## Direct Animal Feeds

01206 827035

The complete range of animal feeds, bedding and accessories for

Horses • Dogs • Cats • Small Pets • Poultry

### Opening:

Mon - Fri: 9am - 5pm

Sat: 9am - 4pm

Local delivery available

*Email:* [directanimalfeeds6@gmail.com](mailto:directanimalfeeds6@gmail.com)

*Maggie:* 07885082281

Unit 3, Heath Farm

Cockaynes Lane

Alresford

CO7 8DA



## VOLUNTEERS NEEDED TO DELIVER THE ALRESFORD ADVERTISER

Can you spare 30 minutes to an hour once every two months?

We are looking for volunteers to help with the delivery of the Alresford Advertiser to the Victoria Avenue area, Church Road and the Pointer end of Wivenhoe Road

**If you are interested, please contact Russell on 01206 825739**

### ALRESFORD ADVERTISER CONTACT DETAILS

**EMAIL:** [alresfordadvertiser@gmail.com](mailto:alresfordadvertiser@gmail.com)

**TELEPHONE:** 01206 825739

**ADDRESS:** 22 Station Road, Alresford, CO7 8BT

### ARE YOU INTERESTED IN ADVERTISING?

For enquiries about advertising your company or organisation, please contact us via the email address above

### CORRESPONDENCE

Any correspondence for publication must be accompanied with your name and address or that of your organisation.

### DISCLAIMER

Submission of material does not always guarantee inclusion within the publication, and advertisements and editorials are published in good faith. The editor cannot be held responsible for the accuracy of any advertisements placed by advertisers. Editorial material does not necessarily reflect the views and opinions of the editors and neither editorial nor advertisements are to be read as recommendations on the part of the editor



St Andrew's Church



Find us on fb: ParishChurchesofAlresfordElmsteadThorrington-TenpennyVillages  
Information about our Services can be found on our notice sheet at <http://tenpennyvillages.uk>

[www.tenpennyvillages.uk](http://www.tenpennyvillages.uk)

## ST ANDREW'S REFLECTIONS Thoughts on Life and Faith

### CARING FOR CREATION

I am writing this in early September as our rather overwhelming summer is coming to an end and our churches in Alresford, Elmstead and Thorrington are starting to celebrate the Season of Creation - Creationtide. This runs from the beginning of September to 4<sup>th</sup> October. It includes Harvest Festival and ends on the day that St Francis, the unofficial patron saint of nature is celebrated.

All through September we will be reflecting on, and giving thanks for the wonders of God's creation and celebrating the beauty and resilience of the earth. We will also be reflecting on, what is widely acknowledged to be close to catastrophic damage humanity is causing to the delicate balances in the natural world that sustain us and the other creatures with which we share this planet.

As part of our commitment to honouring God's creation our churches are working towards Eco Church recognition. This means that we are looking at how we use the land and buildings we have responsibility for. But not just this we are also thinking about how we live our lives and how the whole village can work together in initiatives, big and small to help our communities live a more sustainable life. As well as this we are also considering how we can campaign for planet friendly initiatives in this country and around the world.

It would be easy for these things to drop down the agenda as we all face huge rises in the cost of living but we can work together on things that help each other out and also contribute to a more sustainable life style. Our churches are committed to doing what we can to make this a reality. Whether you are a member of the village church, feel some connection with the church building or even if your never darken it's the doors we need to work together to help one another in this difficult time. Please let me or our Rector, Rev Andrew Fordyce know if they is something that we can work on together.

*Rev Pauline Hart*  
Associate Priest for the Tenpenny Villages  
St Andrew's Alresford, St Anne and St Laurence,  
Elmstead &  
St Mary Magdalen, Frating with Thorrington  
01206 826318  
[assocpriest@tenpennyvillages.uk](mailto:assocpriest@tenpennyvillages.uk)

### ST ANDREW'S CHURCH CONTACTS

Rector: Rev Andrew Fordyce - 01206 920848  
Email: [rector@tenpennyvillages.uk](mailto:rector@tenpennyvillages.uk)

Curate: Rev Tim Solosy  
Email: [revtsolosy@gmail.com](mailto:revtsolosy@gmail.com)

Associated Priest: Rev Pauline Hart - 01206 826318  
Email: [assocpriest@tenpennyvillages.uk](mailto:assocpriest@tenpennyvillages.uk)

Churchwarden: Wendy Wilson - 01206 825040  
Email: [stachurchwardens@tenpennyvillages.uk](mailto:stachurchwardens@tenpennyvillages.uk)

Bookings for the Hub: Meg Burdus - 01206 820618

### Bereavement Service Sunday 13th November at 6.30pm at St Andrew's Church

A short service that gives an opportunity to reflect on the loss of a loved one and to light a candle.

Just come along. It doesn't matter when you lost or whether the church was involved in the funeral or not. We will take the name of your loved one at the door so that it can be read out and you can light a candle in their memory as part of the service.

There will be refreshments after the service so you can stay for a chat.





**StAndrew's  
Alresford**

**RUBBISH ROBOTS**

**Come and join us in the church hub on the 2<sup>nd</sup> Thursday of the month beginning in November**

**A crafty club for Eco champs and recyclers!**

**11<sup>th</sup> November**

**8<sup>th</sup> December**



**StAndrew's  
Alresford  
Lego Club!**

Come join us at the Lego club in the **church hub** on the **4<sup>th</sup> Thursday** of the month, **15:30-17:00**  
Enjoy lots of fun and laughs and of course...Lego!

**Join us online!**

Facebook: [tenpennychurches](https://www.facebook.com/tenpennychurches)  
Twitter: [tenpenny\\_essex](https://twitter.com/tenpenny_essex)  
Website: <http://tenpennyvillages.uk>  
Instagram: [tenpennychurches](https://www.instagram.com/tenpennychurches)



### Alresford Community supports Operation Christmas Child Donations (Shoebox Appeal)



Operation Christmas Child is run by the Samaritans Purse, and is an amazing initiative to help ensure children in need and those in the poorest communities around the world have a special gift to open at Christmas. The scheme asks those that wish to participate to donate a shoebox wrapped in wrapping paper filled with gifts to a local drop off centre during National Shoebox Drop off week from 14<sup>th</sup>-22<sup>nd</sup> November. The shoe boxes will then go to the National Sorting Centre, where they will be checked and sent off on their journey to some of the poorest communities across the world.

This year we are trying to increase donations to the shoebox appeal, by raising awareness of the scheme and working together as a community. We are making it even easier to get involved by leaving 'drop off boxes' in key locations across Alresford Village where you can drop off a donation, without having to worry about packing a whole box. We will then collect the donations weekly, and get them all boxed up to go to the Colchester drop off ready for National Drop off Week.

It's a great idea for all the family to get involved in, and helps children understand a little bit about the world around them. It can give them a sense of looking after, caring and supporting others, as well as helping to education them about the world.

We will keep community members informed of our progress and upload regular photos of our donations via our Facebook page which can be found below. We will also track all of our parcels so we can share their journey including their final destination with everyone that has supported the programme.

Each shoebox also requires a contribution of £5 towards postage and packaging and Alresford Colne Rangers Football Club have kindly offered to contribute towards this cost.

From the end of September donation boxes will be at the following locations in Alresford: Spar, Post Office Shop, Doctor's Surgery, St Andrews Church (Church drop offs between 10.30-12.15 every Sunday, 2<sup>nd</sup> and 4<sup>th</sup> Wednesday of every month same times).

All donations must be new items, suggested ideas can be: blow up ball and a pump, a cuddly toy, personal care items (hairbrush, toothbrush, wrapped soap, hairbands) stationary (pens, pencils, note book, colouring book, stickers). Please do not include any liquid, sweets, war related items or medicine.

For information about the local Alresford collection please visit our Facebook page: Operation Christmas Child Alresford Community Donations or contact Tia on [tiathompson90@gmail.com](mailto:tiathompson90@gmail.com) Or Sophie on 07572902507.

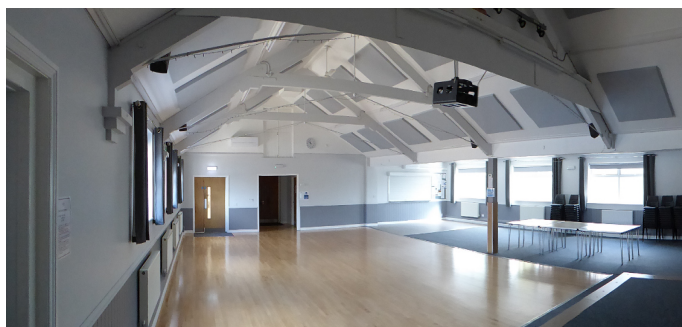
For more information about the National scheme please visit <https://www.samaritans-purse.org.uk/what-we-do/operation-christmas-child/>

# ALRESFORD VILLAGE HALL

Charity Commission Number: 301233

Website: <https://e-voice.org.uk/alresfordvillagehall/>

Facebook: <https://www.facebook.com/Alresfordvillagehall/>



*Photo taken from the stage looking back towards the main entrance*

The Annual General Meeting was held on the 2<sup>nd</sup> August 2022, and was attended by Trustees and 3 members of the public.

## EXERTS FROM THE AGM

The minutes from the AGM last year were accepted and signed.

### Finance:

Our Treasurer/Booking Clerk was not able to be present and the role is currently covered by the Trustees

Audited accounts for March 2021 – Feb 2022 were presented to the meeting.

It is planned to bring the AGM date, out of sync due to Covid back to an April AGM.

The Chair explained that over the past 2 years we have received just under £19k in funding (mostly from the Covid Retail and Leisure grants) but that we have spent this funding – see report further down.

Exact figures are also in our audited report, which was circulated at the meeting.

**Annual Report of Trustees** – was presented verbally as circumstances did not allow for a written report to be submitted.

- The Chair explained how the insurance premium has increased dramatically but we are now insured properly for a complete rebuild at today's prices should the need arise.
- We have moved to online banking and have transferred £5k into the new Barclays account from the old Santander one.
- The overhanging trees have been cut back from the neighbour's garden and we shared the costs of this with them.
- We have received Tendring District Council grants from Ann Wiggins/Gary Scott which have put towards keeping the regular hire costs down for regular user groups.
- We were given new chairs by the GP surgery and have them in the Munson Room.
- A Fundraising dance in Oct 21 raised £100 for charity and £100 for the VH.
- We now have regular window cleaning every 3 months.

- We had Acoustic panels fitted on the VH ceiling which we used some of our Covid grant money for – this stops people getting too close to speak to each other and eradicated the need to shout. Eliminates echo and is a major success.
- New 4-way air flow units fitted again using Covid grants.
- A leak on our flat roof has now been repaired – this cost £6k but we had funding for £5k.
- We received £10k from the Covid Grant (Retail and Leisure) in 2021 and £2k in 2022.
- Our regular hire rates have not increased for 17 years.
- We have moved to quarterly invoicing for most regular hirers.
- Sue Gibson retired from the RCCE and we have a new contact – Danielle Frost.
- We have produced a form for hirers doing children's parties, to advise where they can put bouncy castles.
- We had a Christmas event in December 2021 which was well attended, and we had good feedback. This was a community event which was not a fundraiser.
- We sold our piano for a nominal fee, which was not being used and taking up valuable space.
- We have a current issue with our energy suppliers.
- The hall is being decorated this month and the floor will also be repolished. Total cost of all this will be £2-3k.
- A Vax floor cleaner has been purchased.
- We have moved away from using personal numbers and email addresses, so now have a generic email address which all committee members can access, and we have a mobile phone which can be passed around depending on who is available. We are also moving to an online calendar system so that all can see when we have availability (but booking with still be done through a human).

The Chair extended thanks to the committee, to Chris Sanderson for everything he does re maintenance etc. in the hall and said we save a lot of money thanks to Chris doing this. He also thanked Russel P for helping with plumbing issues as well.

Also, to David Bright for presenting our accounts in order for sending to the auditor, as well as Cath Patel for taking them over so we are now up to date. In addition, he thanked Nicola Lockwood-Pugh for secretarial duties and Elysia for her cleaning and caretaking.

Finally, Russell thanked Pat Burmby who has done the bookings and treasury for the past 18 years. It is a lot busier now and we have the added complexity of Pavilion and bar bookings.

Chris Sanderson also thanked Russell Milburn for being a very active Chair, and also Hayley Milburn who has stepped in and sorted a lot of our finance jobs/invoicing etc.

Jan Diggins, one of the observers, thanked the VH committee for all the hard work and also for keeping hire rates low for regular hirers.

There was no AOB and the meeting ended at 8.30pm.

## Village Hall News

**Elections of committee officers**– to be done at the September meeting due to need to qualify the position of Treasurer and Booking Clerk.

*Continued on page 7*

Continued from page 6

Since the meeting the Hall has had a partial redecoration and the floor has had its annual polish.

The booking and invoicing of hire for the hall has evolved and the new email address for booking/enquiries: [alresfordvillagehall@gmail.com](mailto:alresfordvillagehall@gmail.com) is now live.

Also, the new contact number **07548 742796** is in use and monitored.

It is hoped by the end of October to have an online availability page live which should enable interested hirers

to enquire if their preferred date of hire is available.

Also, a revised system to secure a date requiring a booking deposit/security deposit is being progressed.

Please see <https://e-voice.org.uk/alresfordvillagehall/> for further details.

#### **HALL/PAVILION HIRE**

The Pavilion/Bar is now available to hire for either individually or as well as the Hall. All enquiries should be via: [alresfordvillagehall@gmail.com](mailto:alresfordvillagehall@gmail.com)

Russell Milburn, Chair AVHMC

## **ALRESFORD PARISH COUNCIL**

### **CHAIRMAN'S REPORT**

**October/November**

#### **Highways**

General road safety and the detrimental impact of speeding vehicles is always a concern. A vehicle speed and volume survey has been requested of Essex Highways by the Parish Council for the B1027 near the junction of Cockaynes Lane. On the Wivenhoe Road increased monitoring and speed limit enforcement measures will be undertaken by Essex Police and Community Speedwatch, in addition special operations in the area by the Roads Policing Unit are bringing to book a number of those who drive dangerously. We have been informed that police resources are limited and the point we must remember is that ultimately drivers have the responsibility to drive within the speed limit and enforcement officers can only enforce when they see infringements.

A major setback for a number of Parish and Town Councils, including Alresford, has been the recently announced decision of Essex County Council to withdraw funding and scrap the highways devolution scheme, this is very disappointing as the scheme has played a significant part in road-sign maintenance, hedgerow trimming and latterly, repairs to kerbstones. Discussions are underway to make sure all existing projects are completed.

Some temporary repairs to potholes have been implemented in Wivenhoe Road, near the mini-roundabout, it is hoped that this section can also soon have a thorough re-surfacing programme carried out of the mini-roundabout structures. After considerable petitioning of Essex County Council the pedestrian crossing white lining, and other road markings have been re-painted, we thank Cllr Alan Goggin for his intervention.

#### **Minerals and Waste**

As mentioned previously in the AA the bridle path near Bretts works is not always a pleasant or safe walk or ride when there are many heavy trucks passing so close. The Parish Council has had site meetings with Bretts management, our County Councillor and County Officers to seek solutions to safety issues. Good progress has been made and works are to be undertaken to implement a range of vital improvements to address speed of vehicles and safe crossing points along the haul road.

#### **Playing Field/Public Realm/Pavilion**

There was an increase in regular littering on the field and play areas over the summer holidays and our litter picker, handyman and volunteers were kept very busy. We do ask that parents and guardians instruct their children that the many litter bins provided do have a purpose although it is fair to say that some older ones need to set an example by their own actions.

The tremendous volunteers from the football club have worked tirelessly throughout the summer to maintain the pitches and also to develop social facilities, the village is fortunate to have such dedicated volunteers.

Dog fouling is a continuing problem in parts of the village, of greatest concern is fouling in areas where children are likely to be located, such as the grass verges near the school and on the Staunton Gate development near the small play area, there are so many responsible dog owners but sadly there is a significant number who spoil things for everyone. New dog/general waste bins are to be installed at either end of the bridleway linking Marsh Farm and Ford Lane. Use of the Pavilion is increasing following the pandemic and we anticipate daytime booking to be in great demand. A new booking system is being implemented so that on-line viewing of availability is available – as ever we work closely with the Village Hall Management Committee.

#### **Taylor Wimpey/Staunton Gate**

It is extremely frustrating for the Parish Council and residents that development works on the play area, allotments and other public realm locations have not been signed off by Tendring District Council (TDC) this has to be done before the land can be handed over to the Parish Council. Taylor Wimpey has been asked to carry out remedial works by TDC and these matters are being attended to. Alresford Parish Council keeps in contact with the new Taylor Wimpey management team and we have been informed that the whole development will be handed over first to TDC and then passed to the Parish Council.

#### **Planning**

There has been controversy surrounding the temporary access arrangements to the new Children's theme/play park known as Wyvernwood. Construction of the main entrance on the B1027 was delayed and Church Road and Ford Lane were used as routes to another temporary access point in Ford Lane. Enforcement Officers from TDC were informed by resident's, District Councillors and the Parish Council of this variation from planning conditions and the matter was deemed by Enforcement Officers as a breach of planning conditions. No action is to be taken by TDC as the correct entrance will be open soon and assurances have been given that only the main entrance will be used once it is completed.

#### **St Peter's Church/War memorial,**

Works are planned to improve the parking area as potholes and thinning of the gravel has occurred. The concrete marker posts have suffered a few casualties over the past year and where required replacements will be fitted.

#### **Environment/Climate change**

Climate change is an enormous issue. The summer months

*Continued on page 8*

Continued from page 7

have been hot and dry, in fact too hot and dry. The fire risk to many properties in Alresford has been a concern and with justification, it has been very encouraging to note though that many people refrained from having barbecues and bonfires during the heatwaves.

Trees have died as have a number of plants and different planting regimes may be needed.

Water tanks fed from a new borehole will supply irrigation to the playing field. The hanging baskets around the village have reservoirs that can hold several litres of water and it was good to see the flowers lasting well throughout the summer but all baskets have now been removed and will return in the Spring. Airborne irritants have been a problem for some in parts of the village and the dust from harvesting and from quarrying seem to be the issues, the Council's environment working party will look at this health concern.

### And finally...

The death of HM Queen Elizabeth II and the accession to the throne of King Charles III has been in the thoughts of

many – the loss of Her Majesty came as a national shock and was a time for reflection. The longest monarchical reign in British history came to an end and there was a widely felt sense of personal loss. Alresford Parish Council carried out the necessary and immediate local protocols and will be considering further actions to mark this pivotal time in the nation's history.

Many in the village are concerned about the cost of living and in particular the dramatic rise of energy bills, the Council is looking at ways support and advice can be given as winter approaches. The Council has no direct powers to help individuals but as in the Covid crisis where food and medicines were distributed by Councillors there may be options to assist the community, the value of having so many volunteers is a wonderful aspect of living in Alresford.



Frank Belgrove  
Chairman  
Alresford Parish Council

## Love Your Libraries this month!

On Saturday 8 October, Essex Library Service is hosting a Love Your Library Day! This time, the theme is the environment, so there'll be plenty of themed activities for all ages at all of our libraries.

There'll be fun activities, crafts, and games to get involved in, as well as opportunities to learn about the environment and your local area from our partner organisations, and a chance to find out more about your local library and what we do for you. It's a day to enjoy and celebrate your local community!

To find out what's happening at your local library, take a look at our [events page](#). (Link: <https://libraries.essex.gov.uk/events/>)



### Silver Sunday



Silver Sunday is a national event to celebrate older people and help to tackle the problem of social isolation and loneliness. Essex Library Service is hosting events on Saturday 1 October and Sunday 2 October to showcase what our local community can offer older people and to bring different generations together.

We'll be holding events at our libraries in Chelmsford, Colchester, Harlow, and Basildon which will provide the opportunity to find out more about what Essex Libraries can offer older people. You'll also have the chance to learn about local history, try out an IT taster session with ACL, or get fraud advice from Essex Police, as well as hear about the services provided by our various

partner organisations including Age Well East, United in Kind, Independent Age, and Home Instead.

For more details about each event, please take a look at our events listing below:

[Colchester Library](#) (Link: <https://libraries.essex.gov.uk/events/colchester-library-events/colchester-special-events/silver-sunday-at-colchester-library/>)

### Transparent Language Online

If you need to gain skill in a foreign language, there's an online resource that's free to all library card holders - Transparent Language. Whether you're starting at the very beginning with a new alphabet or you're an intermediate learner looking to enhance your vocabulary and grammar knowledge, Transparent Language can help. It has over [110 languages available for learning](#), plus English (ESL) materials for native speakers of over 30 languages. (Link: <https://home.transparent.com/transparent-language-online-available-languages>)

Transparent Language offers English courses for Ukrainian speakers and Ukrainian courses for English speakers.

For children, there are fun 'Kidspeak' activities that can help them learn French, German, Italian, Spanish, Mandarin Chinese or English.

[Try it today](#). (Link: <https://libraries.essex.gov.uk/reference-and-courses-online/free-courses/>)





## ALRESFORD PARISH COUNCIL CONTACT DETAILS

The Parish Office, The Pavilion, Ford Lane  
Alresford CO7 8AT

Council meetings are held at the Pavilion on the first Wednesday of every month at 7.30pm. Public and Press are welcome. Agenda & Approved Minutes on website

**Website:** [www.alresfordpcessex.uk/](http://www.alresfordpcessex.uk/)

**Facebook:** Alresford Parish Council (Parish Council only)/The Pavilion & Playing Field - Alresford Essex

**Twitter:** @alresfordessex

**Chairman:** Cllr Frank Belgrove - 01206 823739

**Vice-Chairman:** Cllr Ernie Osborne - 01206 822168

Cllr Linda Belgrove 01206 823739

Cllr Simon Clark 01206 827884

Cllr John Housden 07775630058

Cllr Gary Scott 01206 820769

Cllr Ann Wiggins 01206 825153

Cllr Bina Swash 01206 970353

Cllr Alistair Broom 01206 824320

Cllr Sue Hammick

Cllr Julia Claremont-Brown: [jcbapcessex.outlook.com](mailto:jcbapcessex.outlook.com)

### **District Council Tendring**

District Councillor Gary Scott - 01206 820769

**Email:** [cllr.gscott@tendringdc.gov.uk](mailto:cllr.gscott@tendringdc.gov.uk)

District Councillor Ann Wiggins - 01206 825153

**Email:** [cllr.awiggins@tendringdc.gov.uk](mailto:cllr.awiggins@tendringdc.gov.uk)

### **County Council Essex**

County Councillor Alan Goggin - 01206 308023

**Email:** [egog@btinternet.com](mailto:egog@btinternet.com)

### **Parish Clerk - The Proper Officer**

Matt Cooke - 01206 615117 (Answerphone 24/7)

**Email:** [alresfordpc@outlook.com](mailto:alresfordpc@outlook.com)

### **Responsible Finance Officer & Assistant Clerk**

Angela Baxter - 01206 615117 (Answerphone 24/7)

**Email:** [rfopcessex@outlook.com](mailto:rfopcessex@outlook.com)

## ALRESFORD NEIGHBOURHOOD POLICING

### **AUGUST 2022**

#### **RECORDED CRIMES: 10**

**Crime Types:** ABH x 2 - Domestic Abuse x 3 - Other - Theft from MV - Theft of MV - Theft from dwelling - threats

#### **INCIDENTS REPORTED: 11**

**Types reported:** Abandoned 999 x 3 - Dangerous dog - Domestic x 2 - Disturbance - Driving complaint - Nuisance neighbour x 2 - Theft

### **TRUCAM Speed Gun**

Speeding has been a concern for numerous residents so it may be refreshing to know that the TRUCAM speed gun will again be a regular deployment.

## PLEASE WATCH YOUR SPEED AND DRIVE SAFELY!

### SCAMS

Scams are an everyday occurrence that do not just happen online

If you are effected by any scams, please go to <https://www.actionfraud.police.uk/>

for online form to report to action fraud, or by ringing **0300 123 2040** Monday to Friday 8am - 8pm.

**The information you give to Action Fraud can help track down the scammer.**

### Have you spotted a suspicious email?

If you have received an email which you're not quite sure about, forward it to the suspicious Email Reporting Service (SERS): [report@phishing.gov.uk](mailto:report@phishing.gov.uk)

### RESPONSIBLE DOG OWNERSHIP

#### **Always clean up after your dog!**

Tendring has approximately 1,000 dog waste bins and litter bins across the district for the disposal of dog waste. You can be issued with a fixed penalty notice, currently £75, if you are witnessed not clearing up after your dog or you can be taken to court and face a fine of up to £1,000.

To report a dog bin that needs emptying please go to Tendring District Council website where a form can be filled in and submitted online.

### FLY TIPPING

#### **This is still a big problem in most villages.**

**If you suspect anyone of fly-tipping contact the police on 101 or email [recycle@tendringdc.gov.uk](mailto:recycle@tendringdc.gov.uk)**

Tendring District Council web site has lots of information regarding carrier licence and what to check for, when paying someone to remove your rubbish.

### TRADERS

If you are looking for a reputable trader, a list can be found at <https://www.essex.gov.uk/>

**Reporting incidents the correct way  
To report an incident please ring 101**

Or report it online:

<https://www.essex.police.uk/do-it-online/report-a-crime/>

If residents have any concern on suspicious vehicles/activity/ drugs in the village, please feel free to contact me, with as much detail as possible, including contact details.

Email- [julia.brandon@essex.pnn.police.uk](mailto:julia.brandon@essex.pnn.police.uk)

## DRIVERS - THINK ON THIS

I remember this tragic event as though it were yesterday. I've remembered it many times since, but never told anyone really, except my family. I have never written this down before and shall never again. You can act on it as you see fit. I suggest a glance at your speedo when driving through the village as a starting point.

When I was much younger, and lived a long way from here, I was at home from school (I can't remember why, might have been half term). It was mid-morning. I was just indoors from being out in my front garden, where I had been playing with some neighbours. Nobody was at home, just me. I had a little friend who I used to push around on his tricycle, up and down the path of the Cul de Sac where I lived, at number three. He lived at number eight. We used to do that back then. He was three years old. His name was Simon, and his Mum and Dad had moved there to get out of the big town where they used to live, and bring their little boy up more in the country. I remember seeing Simon, on the other side of the road that passed ours, holding his Mum's hand walking down the hill 30 yards away, homewards. The push-chair was full of shopping, and usually Simon was in it, but not this time. I think I went in for a drink of juice, it was a hot and sunny day.

I had just got to the kitchen when there was a squeal of tyres, a scream, a booming noise, and a second or so later, a whoomp, like the sound of a big soaking wet towel hitting a stone floor. And a lot more screaming. I had never heard screaming like that. And it went on, and on, right through me, and is so now. I can still hear it.

I dashed outside and immediately saw my little mate laying in the road just outside my house, not moving. Twenty yards away was a blue Mini Traveller. There was a little blood on the tarmac, and Simon's arms and legs were sort of skewed, not laying normally. I knew what to do, and ran straight indoors and rang 999. Not many people had a phone then, and I knew none of my neighbours did. It was on me. I remember jumping the wall round our garden, through the rose bushes. I dialled 999. I remember babbling to the lady operator on the other end of the line, who was so cool, calm, and collected; she extracted the information out of me that I was too stricken to say on my own. I could not speak. I just said, "ambulance," about fifty times. She was lovely, she must have understood straight away that I was a kid, and dragged the information out of me and stayed talking until I hung up. I'll never forget that lady. I went back outside and there were several people gathered round. Simon's Mum was sat on the kerb, still screaming and crying the cry that only mothers can do, with two ladies holding her. The Mini was stopped over the road. It had clearly been speeding down the hill and Simon had also clearly dashed out into the road, into its path, with the acceleration that only a three year old or an F1 car can do. The driver was another lady, and she was completely coming apart, screaming and crying too. She had long blonde hair, with a yellow ribbon, blue denim flares and denim jacket on, beads round her neck, and flowers in the windscreen of the car, in a little pot. No shoes on. Other neighbours came out, and joined in. Someone brought Simon's Mum some brandy, which disappeared in a second, but did nothing. The screaming continued. In my head, I can recall that at any time of day or night. It scarred me forever.

The ambulance arrived, with a police car, all sirens and bells (we had bells then!) The big white Bedford ambulance halted and two fellows dashed round the back, and pulled out a stretcher and some other things. I remember the ambulance registration number on the silver and black plate ended with F. All the several bystanders were doing nothing. They didn't know what to do, and nor did I. A lady was sitting cross-legged next to Simon on the road, but crying and helpless. Just with him. There. Holding his hand. I was on my hands and knees and wriggled my way to the front and looked into Simon's eyes, saying soothing things, I don't know what. I do remember calling his name. There was blood coming out of his ears, and his skull was flat on the downward side. His eyes were looking in different directions, but both were still, and rolled up, but open. He gave me a short groan, and the ambulance chap literally picked me up and got me out of the way. I remember one of the ambulance men just saying "Oh dear", to the other. They both then gently got Simon on the stretcher, talking to him all the time gently, and with soft, kind, voices. They got Simon's Mum in the back with him, and screamed off to the hospital, bells and lights ablaze. Her shopping was all over the pavement on the other side of the road, and a kind lady picked it all up for her, and took it home.

The Police officer moved the lady's Mini off the road, and put her in his car. She was like a human jellyfish, completely in bits, screaming and crying, and dribble all over her, and she had clearly wizzed her jeans too. There was a big dent in the Mini's bonnet, and one headlight was smashed.

The Police car went, and another one turned up straight away. Two Police officers took statements, including mine. They had to keep finishing my words, because I couldn't get them out. One took some photos. The other had a huge rectangular lump of chalk, and marking the road, they took some measurements with a massive tape measure. They concentrated on a long black skid-mark. My next door neighbour came out and washed the little blood there was away from the entrance to the Cul de Sac. She was crying. So was I. So was everyone. Eventually they went away, and it was suddenly very quiet.

I don't know what happened for a while then. We drifted back indoors. Me, still on my own, but not for long. Some short time later, my Mum turned up. She had been to the shops, too. She had seen Simon and his Mum there. I remember telling her all about it, crying my eyes out, and she was too. She made me a cup of tea, and all seemed to get better. But later, Dad came home, and we went through it all again. I remember my poor Dad's face. All my brothers and sisters, my Mum and Dad all had a family hug. A Police officer came later just before my bed time. He checked my statement again, and I remember having to sign it. It was typed out. I cried myself to sleep, and I remember I could hear my Mum crying downstairs.

The next day, it emerged, through the community grapevine, that Simon was dead on arrival. It was 26 May, 1970, and I was 12.

Anonymous villager.

*The Alresford Advertiser knows the name of the villager but agreed not to publish it*

## THE CHARITY BAG

Still collecting used stamps for Bone Cancer Research  
"until there is a cure"

### STAMPS

Spread the word and tell friends and family to share our appeal. Every stamp, Horizon labels (the square white and gold labels that the post office stick on everything instead of stamps), collections and 1<sup>st</sup> day covers will help raise vital funds for the Bone Cancer Research Trust. Two large boxes of albums and stamps have been sent.

### KNITTING

- Still collecting wool for charity knitters
- Trauma Teddies for emergency services
- Still knitting for Christian Hope International, sending to Moldova and Europe

A huge THANK YOU for all the cases, boxes and bags of wool, threads and patterns! How generous of our supporters, what would we do without you? Please add your details for acknowledgement.

All knits are hopefully being taken to Brentwood early in October, so do let me have finished items as soon as possible.

Thank you in anticipation. Take care until next time.

*Christine Stimpson*

2 Coach Road, Alresford (opposite the Dr's Surgery)

## ALRESFORD BIKERS

Summer was ending, and almost without being noticed, the night seemed to float down, like a tossed cape of weightless black silk, shot with silver pellets from a shotgun fired by the Creator himself.

In the darkness, a Nightjar sang softly in a high tree. Badgers snuffled around, grunting to each other for company while they sniffed out slugs and other delicacies for their tea. An owl, unseen, hooted nearby.

The small group of motor bikers rode languidly through the forest, a small burst of light in an otherwise dark surround, arrow straight, a faint hum coming from the motors as they rode by. Unbeknown to the other critters with whom they shared the night, they were the Alresford Bikers, passing through, after a lazy evening's bumble round some lanes. Alresford Bikers meet on the second Tuesday of every month at 8pm, in The Pointer Inn, where hosts Sam and Neil always make them welcome. The crew have various activities coming up in the future, and you can join them free, gratis and for nothing. Sunday rides out to places of interest, some large, some small, all fun. Larger events, like the forthcoming Air Ambulance Run, which will have happened by the time you read this, and our rides always include inevitable endless cups of tea and very often bacon sarnies too. Anyone with an interest in riding and maintaining bikes, bikers, biking, non-riders, pillions, anyone, can come join us and shoot the breeze.

Meanwhile, back in the woods, AB trundled on, content just to be out riding.

Al Gillard

## R. J. OSBORN

PRINTERS AND STATIONERS

6a Morses Lane Industrial Estate, Brightlingsea



For all your printing requirements

From origination to delivery of your product

Established for over 80 years

Call in and see us for a free no obligation quote

**Telephone:** 01206 302209

**Fax:** 01206 302991

**Email:** [osborn.print@btopenworld.com](mailto:osborn.print@btopenworld.com)

[www.osbornprinters.co.uk](http://www.osbornprinters.co.uk)

## MOBILE LIBRARY Alresford Village Hall

The Mobile Library visits every: 3 weeks



Day of visit: Thursday



Time of Visit: 11.55am to 12.25pm

Next visit dates:

6<sup>th</sup> October 2022

27<sup>th</sup> October 2022

17<sup>th</sup> November 2022

8<sup>th</sup> December 2022

## LUNCHEON CLUBS

**TUESDAYS at ALRESFORD VILLAGE HALL:  
12.30 - 2.30pm**

**FRIDAYS at BRIGHTLINGSEA COMMUNITY  
CENTRE:  
12.30 - 2.30pm**

2 Course Meal including Tea / Coffee - £8.00  
Transport, door to door, if needed - £4.00  
Raffle - £1.00

We welcome back all past members and newcomers.

It is not too late to join us for these friendly meals.

**For any further enquiries, please contact:**

**Alresford**

Mrs Wendy Bates on  
07582603816 or 01206 826757

**Brightlingsea**

The Autumn Centre, 1 Osborne Court,  
Victoria Place, Brightlingsea CO7 0EB  
Or telephone 01206 303702  
Or email [theautumncentre@hotmail.co.uk](mailto:theautumncentre@hotmail.co.uk)

# COMING UP...



## Alresford Gardening Club

A presentation by  
**Jacqueline Aviolet**  
from Aylesford, Kent

entitled

**“Brussell Sprouts to Tangerines”**

**Christmas fruit & vegetable stories**

Alresford Village Hall, Ford Lane, Alresford CO7 8AT

**Monday 3<sup>rd</sup> October at 7.30pm**  
**Non-members &**  
**visitors very welcome £2.50**

## Monthly Tea Dances at St Andrew's Church



Come and enjoy a Strictly moment with our  
monthly Tea Dances – dance, enjoy the music,  
or just chat!

**Commencing 5<sup>th</sup> October 2022**  
(then following 1<sup>st</sup> Wednesday of every month)

**2pm to 4pm**

**Refreshments served**  
Admission free but donations to  
running costs would be appreciated!



## Alresford Gardening Club Quiz Night

**Friday 11<sup>th</sup> November @ 7.30pm**  
**(doors open 7pm)**

Village Hall, Ford Lane. CO7 8AT

**Teams of six - £2.50 per team member**

**Raffle**

**Bring your own drinks and nibbles -**  
**Teas and Coffees available in the break**

**Please call Martin on 01206 822877**  
**to book your table**

*Wish Upon a Fairy*

## HALLOWEEN QUIZ NIGHT

<b>Raffle, Cakes Tombola &amp; more!</b>	<b>29th October 2022</b> Arrival at 7pm   7:30 start Alresford Village Hall, Ford Lane, Alresford, Colchester, CO7 8AT
--	---

**£5 per person**  
Minimum 4 players per team - Maximum 6 players per team  
Prize for winning team & best team name

**Bring your own food and drinks**

To register your team please email:  
[wuafcolchester@gmail.com](mailto:wuafcolchester@gmail.com)  
Please email as soon as possible to reserve a place

All funds raised for Colchester Neonatal unit  
[www.wishuponafairycolchester.co.uk](http://www.wishuponafairycolchester.co.uk)

## ALRESFORD HISTORY GROUP

Friday 11<sup>th</sup> November 2022

Remembrance Day Talk

19:30 at ST ANDREW'S CHURCH

Saturday 12<sup>th</sup> November 2022 (10:00 - 15:00) & Sunday 13<sup>th</sup> November 2022 (12:30 - 15:00)

Exhibition

IN THE HUB

Please see page 15 for further details

## ALRESFORD FETE ORGANISING GROUP

Invites you to a

**Christmas Tea & Sing Song**  
at Alresford Village Hall

**On Wednesday 14<sup>th</sup> December**  
**at 2pm**

**Carols sung by children from**  
**Alresford Primary School**

If you or your partner are 75 or over  
Please contact Jeanette Downing  
on **01206 825008** or

at **41 Cox Road**  
by the **3<sup>rd</sup> December**  
to book a place

This event will be on a  
first come, first served basis.

**There is no charge for the afternoon**  
**& lifts can be requested.**

## MOVIE NIGHT

At Alresford Village Hall

Friday 2<sup>nd</sup> December

When we will be showing

## Downton Abbey

Doors open 7pm

Film starts 7.30pm

This will be a ticket event  
on a first come first served  
basis - entry is free but  
donations will be welcome  
to cover refreshments



Tickets available from Chris  
(07484334698) or  
Russell (01206 825739)

Alresford Village Hall Management Committee

## ALRESFORD CRAFT & FARMERS CHRISTMAS MARKET

Alresford Village Hall,  
Ford Lane CO7 8AT

3<sup>rd</sup> DECEMBER 2022

9am - 12 noon

Exciting Christmas stalls, food and Gifts.

Some stalls to be confirmed

Christmas wreaths to be picked up via order  
in November from a local florist

Christmas Raffle with all proceeds  
going to a village charity

Mince pies, fudge, chutney, meat and  
eggs, cakes, scones

Visit your local friendly market.

The last one of the year

**Free Admission**

**Free car park and disabled facilities**

WISH UPON A FAIRY 2022 CHRISTMAS FAYRE

## Festive Fairyland

12-4pm | 27th November 2022

Alresford Village Hall, Ford Lane,  
Alresford, Colchester, CO7 8AT

- 
- |   |  |
|---|--|
|  Visit Santa's Grotto  |  20 Small Business Stalls |
|  Children's Activities |  Presents                 |
|  Raffle                |  Tombola                  |
|  Live Music            |  Sweet Treats             |

Entry £1 for Adults, Free for Children  
All funds are raised for Colchester Neonatal unit

[www.wishuponafairycolchester.co.uk](http://www.wishuponafairycolchester.co.uk)



# CLUBS AND SOCIETIES NEWS

Do you run a club or society? If you would like something included in the Alresford Advertiser, please email [alresfordadvertiser@gmail.com](mailto:alresfordadvertiser@gmail.com)

## ALRESFORD VILLAGE HALL REGULAR GROUPS

Below are the regular hire groups currently involved using the hall facilities in normal times:

### MONDAY

- Mindfulness Yoga meet Monday mornings
- Alresford Indoor Carpet Bowls Club meet Monday afternoon/Evening.
- Alresford Gardening Club (affiliated to the RHS as Alresford Horticultural Society) meet on the first Monday of the Month, March to November

### TUESDAY

- Alresford Lunch Club meet every Tuesday morning and early afternoon
- 1st Alresford Scout Group (Beavers) meet Tuesday Teatime.
- Dog Training Classes Tuesday evening.

### WEDNESDAY

- Tai Chi meet every Wednesday morning.
- Alresford Art Club meet every other Wednesday afternoon.
- Alresford Women's Guild meet every other Wednesday afternoon.
- Yoga meet every Wednesday evening

### THURSDAY

- Exercise Classes (Extend) meet every Thursday morning.
- Young People's Dance School meet every Thursday afternoon
- Alresford Women's Institute meet the second Thursday evening of the month
- Alresford Camera Club meet the first and third Thursday evening on the month

### FRIDAY

- Alresford Calligraphy Group meet every Friday morning.
- Simply Singing meet every other Friday afternoon

### SATURDAY

- Alresford Craft and Farmers Market on the first Saturday morning of the month (February to December)
- Alresford Colne Rangers Football Club (using the Pavilion at the rear of the hall)

If more information is needed for any of these groups, please visit the Village Hall website (<https://e-voice.org.uk/alresfordvillagehall/>) or contact Russell Milburn on 01206 825739

## ALRESFORD HISTORY GROUP

**On Friday 11th November at St Andrew's Church at 19:30 there will be a Remembrance Day Talk.** This is a recap of the first year of a five year project to research and record the 300+ men and women who fought in WW1 and WW2. Some of our war dead are NOT recorded on the memorials across the Benefice. The current Roll of Honour will be on display.

This 45-minute talk will high-light how we have researched; give tips for researching your own military ancestors and retell some of the stories of those who served from Alresford and Elmstead Heath. Then there will be a chance for questions before an one-minute silence. Doors open from 19:15.

A parallel exhibition will then be held on Saturday 12th November (10:30 - 15:00) and Sunday 13th (12:30- 15:00) in the Hub. This will show the research and local history items donated to our archives. Refreshments will be available.

We also now have a Facebook page full of photographs, the 1851 Census and memories.

If you would like to join the details are <https://www.facebook.com/groups/573194277547053>

A big thank you to Paula Munson who has helped us share her collections.

If you would like to share any memories or artefacts with us please let me know. [local-history@tenpennyvillages.uk](mailto:local-history@tenpennyvillages.uk)

## SIMPLY SINGING

The Simply Singing Group is not a choir or professional singers, but just people who love to come together and enjoy a good old sing a long of their favourite songs.

### Session Dates

**October 7<sup>th</sup> & 21<sup>st</sup>**

**November 4<sup>th</sup> & 18<sup>th</sup>**

**December 2<sup>nd</sup>**



Sessions are from 2 - 4pm and cost £2.00 including teas and coffees

For more further details about the group, please contact:

Jeanette: 01206 825008 or Chris: 01206 823824

## ALRESFORD GARDENING CLUB

On the 4th August several club members enjoyed the Summer Flower Show held at RHS Garden Hyde Hall near Rettendon in Essex. A large variety of trade stands selling all facets of gardening, plants, sculptures, ornaments etc were to be found spread around the extensive grounds. The visit also provided an opportunity to walk through various garden areas and to note how well, or otherwise, certain plants were standing up to the very dry conditions.

Our September club meeting once again welcomed Marc McHearn from Beth Chatto gardens. Marc gave an illustrated and very detailed talk on plant propagation. His enthusiasm and knowledge was very much in evidence, especially when explaining how the use of a single donor plant could provide a number of new plants saving a considerable cost outlay when creating a new garden or replacing existing planting.

In October we will be welcoming Jacqueline Aviolet to the club to give a talk entitled Brussel Sprouts to Tangerines. Jacqueline will be explaining how these two items and many others became associated with Christmas. Jacqueline owns a commercial garden nursery at Aylesford in Kent and she will be bringing with her a number of plants that members will be invited to purchase

### Below are the remainder of the 2022 season events:

**3<sup>rd</sup> October:** Brussel Sprouts to Tangerines -  
Jacqueline Aviolet

**11<sup>th</sup> November:** Quiz

**All meetings within the Village Hall  
commence at 7.30pm**

For more details about the Gardening Club, please contact Chris Sanderson (Chairman) on 07484 334698

## ALRESFORD WI

Alresford WI meet on the second Thursday of each month in the Village Hall. Meetings start at 7.30pm.

New members would be very welcome - come and attend a meeting to see if you enjoy it before joining. Admission for non-members is £3.00 which includes refreshments.

For further information please contact:

Chris James, 01255 764769 or

Hilda Newbold 01206 823477

## ALRESFORD CAMERA CLUB

[www.alresfordcameraclub.org.uk](http://www.alresfordcameraclub.org.uk)

Due to certain circumstances, the new 22/23 season will now commence on the 29<sup>th</sup> September. All meetings commence at 7.30pm in the Village Hall, Ford Lane.

### Future Dates:

**6<sup>th</sup> & 20<sup>th</sup> October**

**3<sup>rd</sup> & 17<sup>th</sup> November**

**1<sup>st</sup> & 15<sup>th</sup> December**

Please refer to the club website at [www.alresfordcameraclub.org.uk](http://www.alresfordcameraclub.org.uk) for details of these evenings and those in 2023

For further details please contact  
John on 01206 250846

## ALRESFORD ART GROUP

Alresford Art Group will be starting its new season on the afternoon of **Wednesday October 5th** in the Village Hall, Ford lane.

The group operates on a self help basis with members sharing and offering their advice should it be called upon. New members are always welcome irrespective of what individuals consider their abilities to be. So if you enjoy using watercolours, pastels, charcoal, acrylics, pencil or just want to give it a go, then the Art Group could be for you.

Sessions are from **1pm to 4pm** and refreshments are available during the afternoon.

### Dates following 5th October are:

**19th October**

**2nd, 16th & 30th November**

**7th December**

Dates for 2023 will be published later

For more information please contact  
Chris on 07484 334698

## COPY DEADLINE

**The editorial and advertising deadline  
for the next edition will be:**

**8<sup>th</sup> NOVEMBER 2022**

# ALRESFORD BOWLS CLUB

**You are invited to join us to  
play carpet bowls**

**SESSIONS ARE HELD EVERY MONDAY  
2.00PM AND 7.00PM  
ALRESFORD VILLAGE HALL  
JUST COME ALONG**

**FREE TRIAL SESSIONS ARE AVAILABLE TO  
NEWCOMERS**

**THEREAFTER THERE IS A £10 ANNUAL FEE AND  
£2 PER SESSION WHICH INCLUDES  
REFRESHMENTS**

For further information contact  
Andrew Pyman on  
07393 381257



## ALRESFORD BOWLS CLUB

Dear Readers

Over the past 6 months we have been playing many of the local Carpet Bowls clubs, some of these include Thorrington, Brightlingsea, Little Clacton and Clacton. These are friendly events with some food and a raffle, with the proceeds of £200 being donated to the Essex and Herts Air Ambulance. We have had some good results and we will be starting the winter friendly's again in October.

We have had a small summer break and we are now back to our normal playing times of Monday afternoons from 14:00 and Monday evenings from 19:00. So if your interested in trying Indoor Carpet Bowls please do come alone, you don't need any equipment as this is all provided for you. Our yearly membership fee of £10 Start from the end of September so its a great time to join the club.

I look forward to seeing all the members playing again, for more information on Carpet Bowls please visit the English Carpet Bowls web site.

<http://www.englishcarpetbowls.com/index.html>

Regards

Andrew



**JULIE BURMBY**  
**26<sup>th</sup> September 1964 - 25<sup>th</sup> July 2022**

**Pat and Maurice would like to thank everyone that has sent cards, flowers,  
messages, and shown great kindness to our family during this sad  
and difficult time**





**ALRESFORD POST OFFICE & CONVENIENCE STORE**

55 Station Road, Alresford  
Essex, CO7 8BX

**Opening Times:**  
Monday - Saturday 8am - 7pm  
Sunday 8am - 4pm

**Visit us for:**

**FREE BANKING SERVICES**

**On cash withdrawals, cash and cheques deposits for the following Banks:**

Barclays, Halifax, HSBC, First Direct, M & S Bank, Lloyds, Nationwide, NatWest, Smile, Santander, The Co-op Bank, TSB, Royal Bank of Scotland, Cahoot, Bank of Ireland, Clydesdale Bank, Yorkshire Bank, CAF Bank

**Wide range of everyday groceries - Greetings cards  
Newspapers & magazines - Beers, wines & spirits  
Cigarettes & tobacco**

**Dry cleaning services - Animal & pet feed - Stationery**

**DON'T FORGET....Your local Post Office offers many other services including:**

- 'One4all' multi-store gift cards for all occasions
- Car Tax using your V11 reminder form or V5 Registration Document only
- Euro's on demand, other foreign currency & Travel Insurance
- Passport check & service
- Car/Home/Pet Insurance
- Bill Payments: Gas/Electricity/BT Paypoint Outlet



# Play Paws Empawrium

Natural dog treats

Enrichment Toys and Accessories

Online AND In-store shopping

**NEW!**

@PEmpawrium  
 @playpawsempawrium  
 Play Paws Empawrium

12b Orchard Business Units  
Cockaynes Lane  
Alresford Essex CO7 8BZ

**07585 440815**  
sam@playpawsempawrium.co.uk  
www.playpawsempawrium.co.uk

# A J R

Boiler Breakdown &  
Service Engineer  
General Plumbing

Tel: 07887683335  
Email: tonyrook6919@gmail.com

629704

## I. BLANCHETTE PLUMBING AND HEATING

Bathroom Installations  
Ceramic Tiling  
All Domestic Plumbing  
Central Heating Systems  
Boiler Upgrades  
Boiler Maintenance Repairs  
Power Flushing  
Under Floor Heating  
Pressurised Water Systems

Established 30 years  
Reliable and Friendly Service

**Tel: 01206 827464**  
**Mobile: 07967 533 314**  
**GASsafe reg no: 64249**  
**ian.blanchette@talk21.com**

# FOOT CLINIC

Trish Parker MAFHP MCFHP MINA • 17 Years Experience  
**Foot Practitioner of Year Winner 2019**

CONSULTATIONS • CLINIC OPEN IN BRIGHTLINGSEA  
5 DAYS A WEEK • DIABETIC PATIENTS WELCOME

PROFESSIONAL TREATMENTS COVERING ALL FOOT DISORDERS  
Removal of Corns • Hard Skin • Ingrown Toenails • Infections  
Fungal Infections • Athlete's Foot • Thickened/Deformed Nails  
Verruca's • Cracked and Painful Heels • Fallen Arches

Call Trish Now To Book An Appointment

Prices From Only £20

**01206 307884 • 07808 938563**  
**Clinic Held at: 66 Seaview Road, Brightlingsea**

# Tendring Blinds & Shutters

Your Local Solution

## Products

Plantation Shutters  
Rollers  
Verticals  
Romans  
Perfect Fit  
Venetians  
Intu  
Day & Night  
Pleated  
Skylight  
Motorisation  
Curtains

*Buy One,  
Get One  
Free*

On Selected  
Vertical Blinds



Call us today for your **FREE QUOTATION** [Checkatrade.com](http://Checkatrade.com)  
01255 474241 info@tendringblinds.co.uk www.tendringblinds.co.uk

## M.D. Spackman Building Services

Brickwork~Groundwork~Extensions  
Fencing~Paving~Maintenance  
Certified Digger Driver / Dumper Driver  
CSCS Registered

Call Mark on 07811 869316 or 01206 827995  
Email: thespackmanhouse@btinternet.com

Alresford, Colchester, Essex

# plumbing heating

**rupert smith** m.i.p.h.e  
182 wivenhoe road C.O.R.G.I reg  
alresford tel. 01206 824379  
colchester mob. 07801 365359

# M. J. GREEN

TRADING AS M. J. GREEN TREWORK (WIVENHOE) LTD

Established 1977

41 VANESSA DRIVE, WIVENHOE  
ESSEX CO7 9PB

TELEPHONE 01206 825503  
(24 hour emergency service)

Mobile phone numbers:

07786 632002 • 07771 638064  
07771 638067

- Tree felling contractor
- Surgery, coppicing
- Reshaping, reducing
- Hedge cutting, grass cutting
- Rough gardens cleaned and cleared
- Stump grinding
- Fencing supplied, erected and repaired
- All rubbish taken away
- Suppliers of firewood, logs

Free estimates and advice

Full insurance cover • N.P.T.C qualified

M.P.F Electrical  
NICEIC, Approved Contractor & Domestic  
Installer

Martin fuller  
www.mpfelectrical.com  
martyspark66@hotmail.com  
[Checkatrade.com](http://Checkatrade.com)  
Where reputation matters

mobil 07903180828  
Rolec car charger installation  
Olev government grant registered.

# WALKER WORKS

## Garden and General Maintenance Services

Ryan Walker  
01206 824080  
07887 746399

## DON'T FORGET...

The Advertiser a bi-monthly magazine run solely by volunteers. We are only able to continue with the support of our Advertisers and with contributions from our readers.

If you are a village organisation and you want to advertise your club or from individuals who have something they want to share, please email [alresfordadvertiser@gmail.com](mailto:alresfordadvertiser@gmail.com) or telephone 01206 825739

Prices for adverts promoting a business can be obtained on request from the contact details above.



**OCM**  
Orchard Cottage Montessori  
Nursery Ltd  
Happiness and learning grow Together



**Ofsted**  
Outstanding  
Provider

- Outstanding nursery education for girls and boys aged 2-5 years
- Government funding accepted for 3 and 4 year-olds
- Set in beautiful, secluded grounds in the village of Alresford



For more information contact us today

[www.orchardcottagemontessori.co.uk](http://www.orchardcottagemontessori.co.uk)  
**01206 825607**  
Email: [o.c.m@btconnect.com](mailto:o.c.m@btconnect.com)

## Cleaning, Washing & Ironing



**Trained & Insured**

Domestic  
Commercial  
One-off  
New Builds

**CLEAN Breeze**

Professional clean,  
tailored to meet your needs  
**Call Victoria on 07941 717372**

## ALRESFORD VILLAGE SHOP

Colchester Main Road  
01206 828169  
07766910713

Extended Opening Hours:  
Monday - Saturday: 5.00am- 9.00pm  
Sunday: 6.00am - 8.00pm

New, more variety stock available including a wide range of beers, wines, spirits, groceries, confectionery, soft drinks etc.

Hot food: sausage rolls & pasties

### LOOK OUT FOR OUT SPECIAL OFFERS

MyHermes Parcel Label Printing, Send & Return Service also Collection Point Printing Service & Payment Facility available in Store

Agents for Danes Launderers & Dry Cleaners

Cash Machine

Newspaper Delivery

Customer Car Park



### [www.simplyhaberdashery.com](http://www.simplyhaberdashery.com)

Check out our vast range of products and low prices

Fabrics, quilting accessories, Braids & trimmings, buttons, Cords, Elastics, Fasteners, Sewing & mending accessories, Sewing machine accessories, Threads, Velcro, Ribbons, Zips, Tapes and much more....

**Free delivery or shipping!!**



01206 581177

[info@simplyhaberdashery.com](mailto:info@simplyhaberdashery.com)

Paypal and all major credit & debit cards accepted

# MARK BRUMPTON TREE SERVICES

## TREE SURGEON

- ♣ Reshaping,
- ♣ Reducing
- ♣ Surgery Work
- ♣ and Clearance

## FULL INSURANCE

For Free Estimate  
and Advice

**TELEPHONE:**  
**01206 825498**  
or **07885749934**

Roxburgh,  
Colchester Main Road  
Alresford  
CO7 8DG



SALES      SERVICING      REPAIRS      HIRE  
OF

GARDEN MACHINERY AND EQUIPMENT

\*

HEDGE TRIMMERS – CHAINSAWS - STRIMMERS

WALK BEHIND MOWERS – LAWN SCARIFIERS

CHIPPERS – SHREDDERS – ROTAVATORS

RIDE ON MOWERS

\*

UNIT 1 FRATING HALL FARM, CHURCH ROAD,

FRATING, COLCHESTER, CO7 7HD

TELEPHONE: 01206 250990/07860 411024

WEB: [www.gbfarmservices.co.uk](http://www.gbfarmservices.co.uk)

EMAIL: [gbfarmservices@btconnect.com](mailto:gbfarmservices@btconnect.com)



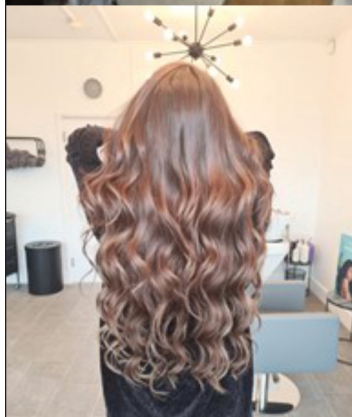
**Sage Hair Studio Ltd**

45 Station Road

Alresford

CO7 8BU

01206 616970



**AJ HOME**

**IMPROVEMENTS**  
and repairs

GENERAL BUILDING SERVICES

EXTENSIONS

GARAGE CONVERSIONS

KITCHENS AND BATHROOMS

PLASTERING

FENCING, PAVING & PATIOS

**Professional - Reliable - Affordable**

01206 628628

07766 565249

[enquiries@aj-home.co.uk](mailto:enquiries@aj-home.co.uk)





# DUNMOW



★★★★★  
4.9 RATING ON OVER  
**600**  
REVIEWS




**SKIP HIRE.  
METAL RECYCLING.  
GRAB HIRE.  
AGGREGATES & TIPPER HIRE.  
HAZARDOUS WASTE.  
ROAD SWEEPER HIRE.  
WASTE COLLECTION.  
LIQUID WASTE DISPOSAL.**






01206 307070 | [DUNMOWGROUP.COM](http://DUNMOWGROUP.COM) 

# wjr



## Mechanical Services



COMMERCIAL & DOMESTIC PLUMBING

-  **Free, no obligation quote**
-  **Boiler renewals and servicing**
-  **Vaillant approved installer**
-  **Bathroom design & installation**
-  **Water main repairs/replacements**

**Alresford based – call Russel on  
07971 519912**

## Tending Laptops

Micro Repair Centre  
07305 076777

Repairs to board level  
Quality refurbished laptops for sale



1 Orchard Business Units  
Cockaynes Lane, Alresford, Essex, CO7 8BZ  
[info@microrepaircentre.co.uk](mailto:info@microrepaircentre.co.uk)  
[www.microrepaircentre.co.uk](http://www.microrepaircentre.co.uk)

# SJ conversions

Builder

**Free Estimates**

**EXTENSIONS  
LOFT CONVERSIONS  
NEW KITCHEN FITS  
NEW BATHROOM FITS  
GARAGE CONVERSIONS**


**07899045847  
01206824752**

[stuartjohnbush@gmx.co.uk](mailto:stuartjohnbush@gmx.co.uk)

## L. J. Watts


Memorial Stonemasons

Together we will create a perfect memorial tribute for your loved one



- Est. over 300 years
- Dedicated craftsmen
- Bespoke memorials
- Personal hand carved designs
- Additional inscriptions
- Cleaning and restoration

01206 867 167  
[www.ljwatts.co.uk](http://www.ljwatts.co.uk)




# SIBBONS

PLANT & TOOL  
HIRE

TRADE/DIY  
STORE

Your local hire and trade centre!!

Family run since 1964.

Open Mon - Fri  
7 - 4.30

PLANT & TOOL  
REPAIR

Tel: 01206 823448  
Fax: 01206 825266  
sales@sibbons.co.uk  
www.sibbons.co.uk



Elegant WINDOWS,  
Beautiful DOORS  
& Stylish CONSERVATORIES



As seen on TV



Installed according to the Tricept  
Better Fitters Code Of Practice

Suppliers of TRICEPT Multipoint  
Locking windows, doors and  
conservatories. Fascias, soffits  
and cladding also available.



Wherever you are we deliver quality

HOME IMPROVEMENTS

01206 823903

www.aandk.co.uk

5 minutes from Essex University on the Main Road in Alresford

A&K House, Main Road, Alresford, Colchester CO7 8DB

## IAN LONGHURST BUILDER

Established 1982

**WORKING IN WIVENHOE FOR OVER 30 YEARS!**

All external work inc. Brickwork and Roofing

All internal work inc. Kitchens and Bathrooms

Free Advice and Estimates

Speak to Ian or Tina:

07484 724262

ianlonghurstbuilder@outlook.com

## SMALL SCALE SKIPS



1½ & 2 YARD MINI SKIPS  
COMPETITIVE RATES

**WE DELIVER**

SAND BALLAST STONE MOT TYPE I & II  
SOIL CRUSHED CONCRETE

01206 822770 OR 07802 265712

PHONE ANYTIME

# JFS

Heating, Plumbing,  
Electrical and  
Renewables Specialist

Friendly and Trustworthy  
Local Engineer

Please Call Jack on  
01206 820599  
07818 034032

17 Heath Road  
Alresford  
Essex  
CO7 8DT



# AM GAS SERVICES

Specialist in Gas Service & Repair

## Bathroom Design & Installation



Call us today  
(No call out charge)

075811 66959  
01206 826122



Proud members of  
**Checkatrade.com**  
Where reputation matters



Accredited installer &  
can offer up to  
12 years warranty

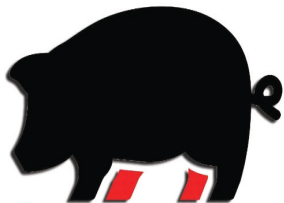


## GAS SERVICES

- ✓ Boiler Servicing From £40
- ✓ All Makes & Models
- ✓ Central Heating Installations
- ✓ Discount for OAP's
- ✓ LPG Qualified
- ✓ 24hr Call Out
- ✓ Alresford Based.
- ✓ Covering Colchester, Clacton & Surrounding Areas



[www.amgasservices.co.uk](http://www.amgasservices.co.uk)



## BECKY'S BUTCHERS

Family Run Butchers / Bespoke Cutting Service

Quality Meat / For Private & Trade

07720833207  
beckysbutchers@gmail.com  
beckysbutchers.co.uk

Badley Hall Farm, Great Bromley,  
Colchester, Essex CO7 7UU

Open Wednesday, Friday and Saturday  
10am - 4pm

Local Beef, Lamb, Pork, Chicken and Game

Award Winning Sausages / Handmade Pies

BBQ Meats / Frozen Fish

Eggs, Jams and Chutneys

Christmas Turkeys and much more



## ALRESFORD FISH BAR

51 Station Road, Alresford CO7 8BU

We offer delicious food at  
competitive prices

Fish and Chips, Kebabs, Burgers,  
Falafel, Wraps plus lots more

See our full menu at  
<https://alresfordfishbar.com/>

Order online or  
telephone 01206 616360

Delivery available within  
a 5 mile radius

Please note:  
There is a minimum order  
of £15.00 plus £2.00 delivery

Download our App



Verified by



# THE PROCLAMATION OF KING CHARLES III

The Proclamation announcing the accession of Charles III to the throne was read by Cllr. Frank Belgrove, Chairman of the Parish Council on Sunday 11th at 2.30pm at the War memorial.

Alresford Parish Council has sent a message of condolence regarding the death of Queen Elizabeth II to the Royal Family and has opened a book of condolence



## HELPING YOU WITH THE COST OF LIVING

Essex County Council (ECC) have produced a summary of their services which may be able to help people during this difficult time. Visit <https://www.essex.gov.uk/news/cost-of-living> to see what cost of living support you could be eligible for.

Help for Households (<https://helpforhouseholds.campaign.gov.uk/>) is offering support to help you prepare for a challenging winter, it is important to find out what you maybe entitled to. Many local councils (<https://www.essex.gov.uk/local-councils>) are also offering additional services and funding and you can also get advice on money, debt and benefits.

Visit ECC website (<https://www.essex.gov.uk/news/cost-of-living>) for full information.

**DON'T FORGET.....**  
CLOCKS GO BACK BY 1  
HOUR ON SUNDAY 30TH  
OCTOBER AT 02:00



## Dreams Can Come True...



Ever since, as a young girl, I was taken for a very sedate ride round the block on the back of a Honda 50, I have dreamed of being a pillion passenger on "a proper bike " - one with a bit more poke..."

A chance conversation with a friend at Church resulted in him offering to take me out on his Kawasaki 800.

So, on 15th July, I found myself "living the dream" riding pillion and feeling the power of the bike as we accelerated along the A120.

Thank you, Tony, for turning my dream into a reality. My bucket list is now just a little bit shorter.

Lyn Watson

Over 1250 copies delivered to every household & business in Alresford

Also available online & in colour via the Parish Council & Village Hall websites: [www.alresfordpcsessex.uk](http://www.alresfordpcsessex.uk) & <https://e-voice.org.uk/alresfordvillagehall/>