

THE ALRESFORD ADVERTISER JUNE/JULY 2022

Established 1970

PLATINUM PARTY IN THE PARK

at Alresford Playing Field

FREE ENTRY Saturday 4th June 2022
12pm - 4pm

EVERYONE
WELCOME

BAR

Join the community for a family picnic at the park
as we celebrate the Queen's Platinum Jubilee

BBQ

LIVE MUSIC BY

SILENCE THE SIRENS

STALLS

ICE CREAM

FANCY DRESS OPTIONAL

CHILDRENS

ENTERTAINMENT

Bring your own blanket/chairs & picnic

Sorry no glass or dogs

NAME THE CORGI

**Alresford
Gardening Club**

6th June

**A presentation &
demonstration of**

"WILLOW WEAVING"

**Please see back page
for more details**

Alresford W.I.

17th June

**FASHION SHOW
by**

**Toggs of
Brightlingsea**

**Please see back page
for more details**

Alresford Bowls Club

11th July

30th Anniversary Tea

**Please see back page
for more details**

Over 1200 copies delivered to every household & business in Alresford

Also available online via the Parish Council & Village Hall websites: www.alresfordpcsex.uk & <https://e-voice.org.uk/alresfordvillagehall/>

St Andrew's Church



Find us on fb: ParishChurchesofAlresfordElmsteadThorrington-TenpennyVillages
Information about our Services can be found on our notice sheet at <http://tenpennyvillages.uk>

www.tenpennyvillages.uk

ST ANDREW'S REFLECTIONS

At the time of writing this - we are in the build up to the Queens Jubilee - so can i ask you? How Do You Relate to the Queen's Diamond Jubilee?

The Queen has been a consistent presence for the majority of our lifetimes. We all will have memories of special Jubilees. When I was little, I remember the special street party we had in Maidenhead. The Close were we lived was sealed off and tables were placed on the road. We all wore party hats and had party food and everything seemed to be red, white and blue. I remember thinking, "why don't we do this all the time".

My memory of the Golden Jubilee is not as vivid but I loved seeing Brian May playing a guitar solo on top of Buckingham Palace, but most of all I loved hearing Madness performing, "Our House" with its lyrics, "in the middle of the street!" And the amazing video projection on the front of the palace.

How do we relate to the Diamond Jubilee? How do you mark 70 years of service? The reality is that you run out of words. Queen Elizabeth II has set new records and will now go down in history as Britain's longest serving Monarch. We can all tune into the glamour and sensation of "The Crown" on Netflix but I think the reality is probably a lot more busy and dutiful.

I wonder if you can think of someone who served for a long time in a roll? What were the qualities that they possessed that helped them "go the distance"? For Her Majesty The Queen there has been a sense of duty forged out of the promise she made in 1952. As she has worked alongside numerous Prime Ministers, I think that she will have done a lot of listening and on a few occasions "spoke her mind".

I think one of the themes of her reign is that she has chosen to express her faith in God. Her faith has been a resource and strength. Interestingly, just like a diamond, our Queen's personality has been made under immense pressure. I wonder what sustains you? We can all manage and muddle along in our own strength but only for so long. For the Queen to have reigned over us for so long, we can be so grateful and yet struggle to know how we can possibly thank her. Maybe it would be fitting for us to reflect on how we can serve others. It may not be for 75 years but we can all play our part. Perhaps you are going through a time of high pressure. It's never easy, but could it be that if we take hold of the bigger call on our lives, we may do more than survive? It maybe that the Lord is forming us into something precious.

We give thanks for Her Majesty's magnificent 75 years of service but let's also take inspiration.

Every blessing
Rev Andrew Fordyce MBE

ST ANDREW'S CHURCH CONTACTS

Rector: Rev Andrew Fordyce - 01206 920848
Email: rector@tenpennyvillages.uk

Curate: Rev Tim Solosy
Email: revtsolosy@gmail.com

Associated Priest: Rev Pauline Hart - 01206 826318
Email: assocpriest@tenpennyvillages.uk

Churchwarden: Wendy Wilson - 01206 825040
Email: stachurchwardens@tenpennyvillages.uk

Bookings for the Hub: Meg Burdus - 01206 820618

StAndrew's Alresford Lego Club!

Come join us at the Lego club in the **church hub**
on the **4th Monday** of the month, **15:00-17:00**
Enjoy lots of fun and laughs and of course...
Lego!

Join us online!

Facebook: [tenpennychurches](https://www.facebook.com/tenpennychurches)
Twitter: [tenpenny_essex](https://twitter.com/tenpenny_essex)
Website: <http://tenpennyvillages.uk/>
Instagram: [tenpennychurches](https://www.instagram.com/tenpennychurches)



ST PETER'S CHURCH

Another working party recently cleared a large section of ground at the churchyard, previously used as a 'bonfire' area and for waste.

In January Mark Brumpton Tree Services cleared dead trees and cutback trees either overgrown or showing signs of distress along with reducing the height of the group of Yews in the middle of the churchyard. This is now allowing easier maintenance and resulted in the clearance of large areas to enable more space for burials and the eventual placement of another Memorial Garden. The complete frontage of St Peters has now also been cleared of growth allowing more light to enhance an already very pleasant outlook.

The recent works required a small digger, generously supplied for a day by Sibbons Plant Hire and an operator to drive it. Our gratitude to Michael Coham for his help, commitment, and time for arranging this for us.

Also, a thank you to the Parish Council in their support in the continued preservation of St Peters. The site is now clear of tree stumps, masonry and general rubbish and will now be allowed to settle. It is hoped also this will encourage visitors

not to leave refuse such as silk/plastic flowers when they are past their best and plastic containers used to bring water to the churchyard. There are three rubbish bins located directly outside of St Peters so should enable visitors to dispose of their rubbish responsibly.



This is a lovely area of our village, but importantly an area where loved ones are resting, so PLEASE visit and enjoy whilst respecting the need for reflection and peace.

Russell Milburn



Alresford Colne Rangers FC First and Reserve Teams

So another season ends, a challenging one at times. The 1st team finish in 7th place in the Premier division, a respectable finish and meeting the targets that we set at the start of the season, a solid run in the Essex Premier Cup sees us through to the last 16, beating Witham Town Res and Concord Rangers Res along the way.

The reserves had a season of struggles with management and playing personnel changes mid season leaving them with a bottom 2 finish and a start in Division 2 likely.

We move forward into season 22/23 with Mike Wallace coming in alongside Dave Dance in a new look management team and the club looking to fill the vacant managerial post with our reserve side.

As a club we'll be looking for both sides to push on in their respective leagues and hopefully compete at the top end of both divisions.

#UTACR  



Alresford Colne Rangers FC Under 11's

This season saw the team transition from 7-a-side to 9-a-side. With this it brought a new size of pitch, goal and football with an ever-increasing closeness to the full game. The team had to start learning offsides also whilst getting use to other new rules.

With a few friendlies behind them to start the season off and to get to grips with the new format we hit the ground running!

A number of very positive performances and results followed which grew confidence in the boys and this showed how they were starting to express themselves on the pitch. In the mid-season, we went on a run of 9 games without defeat with all the boys at one point or another taking time to star.

As the season progressed, we were then moved into another set of development fixtures to face more established teams and bigger challenges, testament to how well the team had progressed and the determination of wanting to always be better shining through.



As expected with the new fixtures, we have not had things our own way as much, however the boys have found their feet in a number of the games and have coped admirably to their credit.

Overall, an incredibly successful season which has brought smiles to the team, coaches and those watching on. We really could not be any prouder of them!



Alresford Colne Rangers FC Under 7's

Alresford Colne Rangers FC recently formed a new under 7's youth side. With what started as a Sunday morning kick-about has now turned into a good group of friends who all have great admiration for the game.

Russel Pugh of Alresford Colne Rangers FC started the training sessions and received a good response. With all the boys wanting to stay on and continue with their training it was decided that Danny Cook would stand in create and manage the newly formed ACR FC Under 7's team.

The team trained every Sunday and finally knew the time was right to approach the league. A few weeks later they had been entered into the Colchester & District Youth League and the fixtures come through.

With their first game on Sunday, 13th February, they had missed a large proportion of the season. However, the boys worked hard and have had an amazing first season with 11 games played and 71 goals scored.

Message from Danny Cook, the ACR FC U7's Manager; I had recently moved to the village and my son just wanted to play football. We started going to the Sunday sessions and quickly realised that this was the club I wanted him to play for, however, with no current under 7 team, it didn't take much to convince me to step in and manage the side.

Alresford Colne Rangers FC are different to most other clubs, it's not just about turning up for training and matches, it's more like a 'football family'. Everyone involved in the club has dedication and commitment, it's inspirational and a pleasure to be a part of.

The boys have had an amazing first season and I am extremely proud of each one of them. With the 2021-22 season now finished, I am excited to move forward to next season and watch this team grow and develop.



Alresford Colne Rangers FC Ladies

The 2021-2022 season has just ended and Alresford Ladies finished 4th in the league; an excellent result from a team led by Tony Birkin and Claire Bennett. The current squad is the best squad the ladies have had since ladies football started at the club. The commitment they show is unreal, they run with a squad of 17 and training numbers are always in double figures. Some weeks it is tight to field a side but they never cancel a game - a credit to them and they are a credit to the club. They play with a smile on their faces, they like to win but accept defeat still smiling. Some of our ladies have given the club excellent service and continue to do so and we would welcome anyone to join our ladies team to improve it even more.

Direct Animal Feeds

01206 827035

The complete range of animal feeds, bedding and accessories for

Horses • Dogs • Cats • Small Pets • Poultry

Opening:

Mon - Fri: 9am - 5pm
Sat: 9am - 4pm

Local delivery available

Email: directanimalfeeds6@gmail.com

Maggie: 07885082281

Unit 3, Heath Farm
Cockaynes Lane
Alresford
C07 8DA



FOOT CLINIC
Trish Parker MAFHP MCFHP MINA • 17 Years Experience
Foot Practitioner of Year Winner 2019

CONSULTATIONS • CLINIC OPEN IN BRIGHTLINGSEA
5 DAYS A WEEK • DIABETIC PATIENTS WELCOME

PROFESSIONAL TREATMENTS COVERING ALL FOOT DISORDERS
Removal of Corns • Hard Skin • Ingrown Toenails • Infections
Fungal Infections • Athlete's Foot • Thickened/Deformed Nails
Verruca's • Cracked and Painful Heels • Fallen Arches

Call Trish Now To Book An Appointment **Prices From Only £20**

01206 307884 • 07808 938563
Clinic Held at: 66 Seaview Road, Brightlingsea

THE CHARITY BAG

Still collecting used stamps for Bone Cancer Research
"until there is a cure"

5kg of stamps and albums have been delivered safely, and the recipients were delighted to be able to benefit from someone else's life time of collecting - **thank you** - but we always need more.

Can You Help Us Please?

We are in desperate need of any amount of used and new postage stamps from UK and overseas, horizon labels, stamp collections, first day covers and postcards at anytime of the year in aid of Bone Cancer Research Trust (Charity Number 1159590)

Please deliver to Friends of BCRT-Stamp Appeal and More! at: 2 Coach Road, Alresford, Colchester CO7 8EA, or email charystampappeal@gmail.com for more details.

We are also in need of more collection points.

Can You Help Us Please?

KNITTING

Well, the annual September trip along the A12 to Romford, with the hand knitted items for the needy, was brought forward this year.

The sign over the door says "HOPE HOUSE" - that says it all. This year we were invited upstairs to very humble offices. Very cold in the winter, extremely hot in the summer, and for 3 months, just about right! What a beehive of volunteers, with "new blood" to inspire the charity.

My summerhouse was bulging, so thank you for the incredible urgent response, and within the week we had a van full of beautiful knitwear. The skill and speed of some of our knitters amazes me, over **430** pieces were bagged up and now await the lorry to take them to MOLDOVA and ROMANIA where the poor are supported in the Institutions by those more able than themselves.

Over 20 knitters regularly leave their goodies here day after day. One lady has provided 36 cardigans; one in a day I understand. I am amazed! You know who you are - **thank you**.

Wool donations have been good - house clearance and unbanded stock are always welcome - **thank you** whoever you are. For those who continue using their skills to help others are to be admired. Some days the needles are still, but the crochet hook comes out; other days all is well. May I thank you on behalf of those who cannot say it personally.

For friends who are not so good at the moment, we wish you the gentle care that you deserve. I thank you from the bottom of my heart for the effort and energy.

Wool and needles available to knit in your own home. Delivery and collection daily.

Take care and Happy crafting
Christine Stimpson
2 Coach Road, Alresford (opposite the Dr's Surgery)

ALRESFORD VILLAGE HALL

Charity Commission Number: 301233

Website: <https://e-voice.org.uk/alresfordvillagehall/>
Facebook: <https://www.facebook.com/Alresfordvillagehall/>



VILLAGE HALL NEWS

The encouraging return to normality continues as we learn to live with Covid. We continue to advise users/hirers to follow the Government guidance. It is now very much the responsibility of the user to manage the risk of Covid, however there is still sanitisers available, and ventilation is still recommended whilst using the hall.

As in the last report to the Advertiser, we are back to full usage during all weekday sessions except for a Friday evening, although there are even occasional hires such as quiz nights etc on that evening. Weekend and private hires such as parties or dances are extremely healthy.

The Village Hall financial position is very healthy, and this could be crucial in the months ahead as running costs continue to increase. A close monitor will be kept on the situation but at this stage there is no plans to increase hire fees for regular groups. We thank Tendring District Council via Councillors Scott and Wiggins for the grant made to the hall to assist in maintaining the present fees.

The 2022-2023 insurance has been renewed with an increase of nearly £400 from last years premium. This increase is partly due to a structural survey last year that advised the building cost for the hall was increased from circa £650,000 to £1,100,000.

An external notice board with LED lighting and a new floor cleaner has been purchased to allow the cleaner to wash the polished floor more frequently. The regular floor service will be scheduled for August. Also, a local decorator is quoting to repaint kitchen ceiling and make good settlement cracks, repaint damage in the Ladies toilets and completely decorate the link corridor between the hall and the Pavilion.

The village hall has an upright piano that needs a new home where it will be loved and more importantly played. Please contact me if you are interested.

The AGM is planned for Tuesday August the 2nd 2022 in the Munson Room at the Village Hall. Time 7.30pm.

HALL/PAVILION HIRE

The Pavilion/Bar is now available to hire for either individually or as well as the Hall. All enquiries should be via: enquiries@alresfordvillagehall.co.uk

Russell Milburn, Chair AVHMC

CLUBS AND SOCIETIES NEWS

Do you run a club or society? If you would like something included in the Alresford Advertiser, please email alresfordadvertiser@gmail.com

ALRESFORD VILLAGE HALL REGULAR GROUPS

Below are the regular hire groups currently involved using the hall facilities in normal times:

- Mindfulness Yoga meet Monday mornings
- Alresford Indoor Carpet Bowls Club meet Monday afternoon/Evening.
- Alresford Gardening Club (affiliated to the RHS as Alresford Horticultural Society) meet on the first Monday of the Month, March to November
- Alresford Lunch Club meet every Tuesday morning and early afternoon
- 1st Alresford Scout Group (Beavers) meet Tuesday Teatime.
- Dog Training Classes Tuesday and Thursday evening.
- Tai Chi meet every Wednesday morning.
- Alresford Art Club meet every other Wednesday afternoon.
- Alresford Women's Guild meet every other Wednesday afternoon.
- Yoga meet every Wednesday evening
- Exercise Classes (Extend) meet every Thursday morning.
- Young People's Dance School meet every Thursday afternoon
- Alresford Women's Institute meet the second Thursday evening of the month
- Alresford Camera Club meet the first and third Thursday evening on the month
- Alresford Calligraphy Group meet every Friday morning.
- Simply Singing meet every other Friday afternoon
- Alresford Craft and Farmers Market on the first Saturday morning of the month (February to December)
- Alresford Colne Rangers Football Club (using the Pavilion at the rear of the hall)

If more information is needed for any of these groups, please visit the Village Hall website or contact Russell Milburn on 01206 825739

ALRESFORD BOWLS CLUB

You are invited to join us to play carpet bowls

SESSIONS ARE HELD EVERY MONDAY
2.00PM AND 7.00PM
ALRESFORD VILLAGE HALL
JUST COME ALONG

FREE TRIAL SESSIONS ARE AVAILABLE TO NEWCOMERS

THEREAFTER THERE IS A £10 ANNUAL FEE AND £2 PER SESSION WHICH INCLUDES REFRESHMENTS

For further information contact
Jenny Holben on
01206 827756 or 07714 875001



SIMPLY SINGING

Session Dates

17th June

15th and 29th July



The Simply Singing Group is not a choir or professional singers, but just people who love to come together and enjoy a good old sing a long of their favourite songs.

Sessions are from 2 - 4pm and cost £2.00 including teas and coffees

In view of possible ongoing COVID restrictions/regulations, anyone wishing to attend a Simply Singing afternoon is recommended to call either Jeanette on 01206 825008 or Chris on 01206 823824 to check if it is still able to go ahead.

For more further details about the group, please contact:
Jeanette: 01206 825008 or Chris: 01206 823824

Dates for August and September will be published in the next edition of the Advertiser.

ALRESFORD GARDENING CLUB

Our guest speaker for April was Simon White from Peter Beales Roses. Simon's expertise on every aspect of roses from types to diseases, propagation, pruning, feeding etc was very much in evidence and made for a very comprehensive illustrated talk. A large selection of roses and other plants, plus garden sundries were available for sale at competitive prices and many members took full advantage of this.

Below are the remainder of the 2022 season events:

6th June: Willow Weaving - Debbie Hart

4th July: Archaeological Digs - Adam Wightman

3rd or 4th August (tbc): Hyde Hall Summer Flower Show (members only)

5th September: Plant Propagation - Marc McHearne from Beth Chatto's

3rd October: Brussel Sprouts to Tangerines - Jacqueline Aviolet

11th November: Quiz

All meetings within the Village Hall commence at 7.30pm

For more details about the Gardening Club, please contact Chris Sanderson (Chairman) on 07484 334698

MOBILE LIBRARY

Alresford Village Hall

The Mobile Library visits every: 3 weeks

Day of visit: Thursday

Time of Visit: 11.55am to 12.25pm

Next visit dates:

2nd June 2022

23rd June 2022

14th July 2022



THE AUTUMN CENTRE LUNCH CLUB

TUESDAYS at ALRESFORD VILLAGE HALL:
12.30 - 2.30pm

FRIDAYS at BRIGHTLINGSEA COMMUNITY CENTRE:
12.30 - 2.30pm

2 Course Meal including Tea and Coffee - £8.00
Transport, door to door, if needed - £4.00
Raffle - £1.00

We welcome back all past members and newcomers. It is not too late to join us for these friendly meals.

**Any further enquiries,
please phone 01206 303702**

ALRESFORD ART GROUP

The season has now closed - please watch for the new season details in the next issue of the Alresford Advertiser.

ALRESFORD CAMERA CLUB

www.alresfordcameraclub.org.uk

The season has now closed - please watch for the new season details in the next issue of the Alresford Advertiser.

ALRESFORD WI

Alresford WI meet on the second Thursday of each month in the Village Hall. Meetings start at 7.30pm.

New members would be very welcome - come and attend a meeting to see if you enjoy it before joining. Admission for non-members is £3.00 which includes refreshments.

For further information please contact:
Chris James, 01255 764769 or
Hilda Newbold 01206 823477

ALRESFORD CRAFT & FARMERS MARKET

Alresford Village Hall
Ford Lane CO7 8AT

**4th June 2022
2nd July 2022**

9am - 12 noon

A variety of food and craft stalls

Free Admission

Free car park and disabled facilities

COVID guidelines will be in place and of course this may prevent the market being held. Unless exempt, we politely ask that face coverings are worn when walking around the market.

For updated information, please check the Alresford Craft & Farmers Market Facebook page

Boxted Airfield Museum

Charity Number: 1123168

**We are open on the last Sunday of every month
until October 10am - 4pm.**

**Admission donation is £4.00 per adult,
accompanied children free.**

If the weather is good we hold an outdoor Cafe

The 56th Fighter Group took part in all major battles during their stay at Boxted including D-Day and the Battle of the Bulge. The 56th gained the nickname Wolfpack because of the number of high scoring pilots in the unit. Francis Gabreski was the top American pilot flying in Europe with 31 aircraft destroyed. Boxted also recognised as having the only US pilot to win the Medal of Honour in Europe.

The first American Air Sea Rescue unit was formed at Boxted. When the war finished it became an RAF base and later wartime homeless families came to live in the disused buildings on the Airfield. Flying finally finished in 1965

For further details, please see
<https://www.boxted-airfield.com/home>

Supporting residents and businesses of

TENDRING Your Future Matters

Free information, advice and guidance

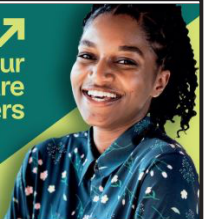
- 🔗 Employment
- 🔗 Skills
- 🔗 Qualifications
- 🔗 Apprenticeships
- 🔗 Wellbeing
- 🔗 Volunteering

🌐 ACLEssex.com/YourFutureMatters

☎ **0333 032 0934**

This project is funded by the UK Government through the UK Community Renewal Fund.

Your
Future
Matters



Everyone deserves to have equal access to excellent learning, training, and employment opportunities throughout their lives. This includes opportunities that are relevant to local communities that provide both residents and businesses with the platform to achieve their ambitions. There can be many barriers to achieving your learning and career potential or personal goals. We're here to break down those barriers by improving access and awareness to available opportunities, as well as supporting you whilst you achieve the goals that you have set your sights on. No one should feel left behind, lost, or isolated. We're inspired by the positive impact that any individual can have on the lives and wellbeing of others. By improving our own prospects, we can all instil confidence and support those around us to in turn raise the aspirations and connections within the community. Our vision is for all residents, communities, and businesses to feel connected and supported.

If you would like anymore information, please contact the team on: ACL.YFM@essex.gov.uk

#YourFutureMatters



Follow ACL on Facebook, Twitter, Instagram and LinkedIn.



**ALRESFORD POST OFFICE
& CONVENIENCE STORE**

55 Station Road, Alresford
Essex, CO7 8BX

Opening Times:
Monday - Saturday 8am - 7pm
Sunday 8am - 4pm

Visit us for:

FREE BANKING SERVICES

On cash withdrawals, cash and cheques deposits
for the following Banks:

Barclays, Halifax, HSBC, First Direct, M & S Bank, Lloyds,
Nationwide, NatWest, Smile, Santander, The Co-op Bank,
TSB, Royal Bank of Scotland, Cahoot, Bank of Ireland,
Clydesdale Bank, Yorkshire Bank, CAF Bank

Wide range of everyday groceries - Greetings cards
Newspapers & magazines - Beers, wines & spirits
Cigarettes & tobacco

Dry cleaning services - Animal & pet feed - Stationery

**DON'T FORGET....Your local Post Office offers
many other services including:**

- 'One4all' multi-store gift cards for all occasions
- Car Tax using your V11 reminder form or
V5 Registration Document only
- Euro's on demand, other foreign currency
& Travel Insurance
- Passport check & service
- Car/Home/Pet Insurance
- Bill Payments: Gas/Electricity/BT Paypoint Outlet



Play Paws Emporium

Natural dog treats

Enrichment Toys
and Accessories

Online AND
In-store shopping



@PEmpawrium

@playpawsempawrium

Play Paws Emporium

12b Orchard Business Units
Cockaynes Lane
Alresford Essex CO7 8BZ

07585 440815

sam@playpawsempawrium.co.uk

www.playpawsempawrium.co.uk

A J R

Boiler Breakdown &
Service Engineer
General Plumbing



629704

Tel: 07887683335

Email: tonyrook6919@gmail.com

COLNE VIEW DENTAL SURGERY LTD
53 Ladysmith Avenue, Brightlingsea
Essex CO7 0JD

01206 302307

Piers Lambert Bchd (Leeds 1992)

MODERN FRIENDLY FAMILY PRACTICE
FREE ON-SITE PARKING

WHEELCHAIR ACCESS AND DISABLED FACILITIES
ONLY WHITE NON MERCURY FILLINGS
CEREC 1 VISIT CROWNS NOW AVAILABLE
COSMETIC WORK - TOOTH WHITENING
NO REGISTRATION NECESSARY
EMERGENCIES WELCOME
VISIT OUR WEBSITE AT - www.colnedental.co.uk
Major card payments accepted

**I. BLANCHETTE
PLUMBING AND HEATING**

Bathroom Installations
Ceramic Tiling
All Domestic Plumbing
Central Heating Systems
Boiler Upgrades
Boiler Maintenance Repairs
Power Flushing
Under Floor Heating
Pressurised Water Systems

Established 30 years
Reliable and Friendly Service

Tel: 01206 827464

Mobile: 07967 533 314

GASsafe reg no: 64249

ian.blanchette@talk21.com

ALRESFORD PARISH COUNCIL CHAIRMAN'S REPORT

FROM ANNUAL PARISH MEETING - MAY 2022

*(Some information will have been included in previous
Alresford Advertiser reports)*

The Chairman's report for the annual parish meeting usually covers the Council's activity during the previous year. I wanted though to start this report though in thanking all those involved over the past two and a half years in mentioning the way that the Council and volunteers rose to the challenges of the Covid pandemic and helped the community. In the early stages of the pandemic there were problems for those shielding and isolating – this meant quite a task in providing food and medicines. What is heart-warming is that there were so many volunteers stepping forward to do shopping and the pharmacy runs that it transpired that all those that requested help were quickly catered for.

Generous donations from residents helped spread the burden. So – it is good to open my report with such a positive message – Alresford has the most amazing volunteers.

Moving on to the last Parish Year we can report on Council business generally and some of the achievements and some areas that still need addressing:

The Precept

The Precept is the local tax that Parish Councils charge by law to enable them to operate. The money raised in Alresford pays for staff, maintaining fifty or so streetlights, the thirty-six litter bins, two bus shelters, the community pavilion, the playing-field and play area, community access areas, the allotments and many other very local provisions and services including a Police Community Support Officer. As housing development increases the spread of the taxation burden means that individual households pay less individually however more residents does mean more pressure on the infrastructure so some costs do increase. We increased the precept for this year by 2% but due to this spreading of the tax burden a 4% cut in the individual tax for band D equivalent households was a welcome feature of our financial planning.

The Neighbourhood Plan

Alresford was the first area in Tendring to have a Neighbourhood Plan in place. The referendum poll for the community to decide whether to adopt the Alresford Parish Council Neighbourhood Plan was held last year and the result was a resounding "Yes". 96% of those that voted wanted to see the adoption of the Plan so that now Tendring District Council is bound in law to refer to the Alresford Parish Council Neighbourhood Plan when determining planning applications. Although the Neighbourhood Plan project was a Parish Council initiative it would not have progressed without the superb input from the non-Councillor members of the Steering Group - their contribution was enormous and crucial. Engagement from residents in the surveys and the vote was essential and required extra work as the final stages of the Neighbourhood Plan process during the height of the Covid pandemic, so well done to all involved.

Highways

Road safety and the impact of speeding vehicles continues to be a concern. Essex County Council Highways rejected both

Parish Council applications to address speed limits in Cockaynes Lane and on the B1027. To challenge this rejection, we employed an Independent Highways Consultant and reports from the consultant now received on both roads are heavily in favour of speed limit and other changes. In addition, concerned residents raised a petition themselves for a 30mph limit where the B1027 passes through Alresford. We now hope that Essex Highways has a change of mind, but we know we have a difficult task as there is a poor record of Essex Highways reducing speed limits even when communities request they do so. The new policies that are promised on a revised speed management strategy may help our cause.

The Parish Council now has a mobile (demountable) vehicle activated sign that has a visual speed indicator device together with data collection capabilities. This device will be put to good use at particular hotspots. The Localism Act has enabled devolution of some highways matters to Parish and Town Councils who have entered a devolution scheme, Alresford entered the scheme and has benefited by being able to carry out minor highways works such as additional roadside hedge cutting and road sign repairs. Our costs for replacing signs are far less than Essex County Council and so by our Council carrying out works we save the Council Taxpayer money.... for example, each road sign renewal costs Essex County Council £500 when all costs are factored in. The Parish Council has renewed some signs for less than £100.

We have voted to experiment with dealing with the kerbstone issues in a part of the village where due to poor construction methods dating back to the sixties kerbstones became detached from the road and pavements. There are few companies that are authorised to do this work and we have suffered an unexpected delay in starting the project due to the death of the proprietor of the company we chose. Work should though commence in the summer.

Flooding issues were highlighted during the year in several village locations and drain blockages and capacity problems seem to be the cause. The Parish Council raises these matters with ECC Highways via our County Councillor, Alan Goggin, who always follows up on any request made of him by the Council. There are many highways issues that need to be resolved in the village including the poor state of pavements – these issues are found across the county, and many would agree that investment in basic infrastructure is needed urgently.

Minerals and Waste

Alresford has been a centre for aggregate quarrying and processing for many years and the resultant fishing lakes from this quarrying process are seen around the outskirts of the village. In times past bulk sand was transported from Alresford Creek via sand barges, however, road transport is now the only way that aggregates are moved in our area and the movement of the large trucks does produce noise, dust and in some cases danger. We know we have to live with some unwanted elements of the minerals and waste industry, but excessive heavy vehicle movements can be environmentally and socially damaging. The bridle path (our only PRoW Bridle Path) near Bretts works is not always a pleasant walk or ride when there are many heavy trucks passing so close and the Parish Council is in discussions with aggregate operators to see what measures can be taken to lessen the impact of these vehicles. Many residents have raised concerns about the daily truck movement rates and their speeds. Consultation and discussions are ongoing. Poor

planning regulation in times past has not helped matters but the Council is working on measures to address a range of issues.

Playing Field/Public Realm

Some great suggestions have been received from parents as to what new play equipment would be beneficial and we await our share of Section 106 money to see what we can afford. There was an increase in regular littering on the field and play areas over the summer holidays and our litter picker, handyman and volunteers were kept a little too busy. We do ask that parents and guardians instruct their children that the many litter bins provided do have a purpose. In and around Alresford there are thirty-six litter bins, all bins can be used for general litter and dog waste (no dogs are allowed on the playing field), they are emptied twice a week at a usual cost per Parish Council bin of approx. £80 each year (we pay this to Tendring District Council). If a bin is missed for emptying, then that soon becomes apparent so we ask that the Parish Council Office is contacted to report this.

The Public Realm of our village does need improving and we are employing a consultant to plan what can be done with judicious landscaping and tree planting, we need the consultant's expertise as that will help with grant applications to fund works. The Parish Council cannot thank the volunteers from the football club enough for the voluntary work they do to maintain the pitches in such amazing condition – a labour of love and it shows.

Defibrillators

The village has two publicly accessible defibrillators, "Automatic Emergency Defibrillators" are the type used. One is in a yellow cabinet outside the Post Office in Station Road and the other is in a similar cabinet mounted on the village hall wall. Both have been used on a number of occasions since the Council obtained them five years ago. The East of England Ambulance Service is the main user, but members of the public have also had to employ these life saving devices. A new system run by the British Heart foundation notifies a nominated Councillor when they have been used so that pads and batteries can be checked and then the units are brought back online.

Taylor Wimpey/Staunton Gate

A number of residents have asked when the Parish Council will open the new allotments – the answer is that we are awaiting the handover to the Parish Council from the site owners, and we are doing everything we can to resolve the delay. The issue seems to be that Taylor Wimpey needs to finalise works and have them signed off by the Planning Authority (TDC) and Essex Highways before the allotment land can be handed over to the Parish Council. We are really sorry for this delay as there are clearly very keen gardeners who are frustrated and who bought properties with the expectation of having an allotment nearby.

St Peter's Church

Using our new legal powers, we have been able to assist the Church authorities and Essex County Council in improving the Churchyard at St Peter's. Rotten and damaged fencing has been replaced by our handyman and trees are being attended to. Sadly, a number of elm trees died, and replacement trees will need to be planted. Yew trees are now shaped and the whole area is improved. The parking area next to the War memorial will have repairs carried out and fresh gravel laid.

Policing

Alresford funds a PCSO, as many will be aware, but at the moment sickness and operational reasons has meant our regular PCSO Julia Brandon is not on duty, and we are reliant on non-Council funded officers. Alresford Parish Council has voted to have a Community Special Police Constable in addition to our PCSO. Previously there were considerable costs to a village having its own police "Special" but now the only cost is a travel and subsistence allowance for these police volunteers. Unfortunately, to date, there has not been a single applicant.

Public Rights of Way (PRoW)

Volunteers who operate under the Parish Council Parish Paths Partnership (P3) scheme tackle many of our cross-field footpaths. The volunteers tackle cross field footpaths that require brambles, hedging and grass to be cut back and have worked tirelessly over the year as the number of walkers and in particular dog walkers has grown significantly. We are indebted to their service to the community.

The Environment

We all realise now that we are confronted by a climate emergency and that we simply cannot continue operating as though we can ignore the human impact on our climate. Alresford Parish Council has declared acceptance that we are in a climate emergency and a number of projects are underway so that Alresford is playing a part regarding environmental issues. A double EV charging point for the car park is the latest project. Already we have LED lighting for all APC streetlights and pavilion lighting and tree planting is underway. The addition of a specialist tetra pack re-cycling bin and borehole extracted water are two further projects we have progressed. Concern about petrol and diesel engine fumes at the rail crossings from vehicles waiting has produced a poster campaign that is advising drivers to switch off. Further environmental projects are being considered.

Clerk/Proper Officer and other Staff

Clerk and Proper Officer Michelle Salazar left the Council last year due to a family relocation to Norfolk. She had served the Council and community for seven years and contributed greatly - especially in maintaining high standards for the play area and helping the Council gain a nationally recognised Foundation Award for Council business. In addition, she was part of the team that guided Alresford to achieve category winner in Essex Village of the Year in 2019. Replacing Michelle is Matt Cooke who was selected to join the Council staff by a panel from the Personnel Committee. We thank our Assistant Clerk Angela Baxter for covering Council business during the staff transitional period. Matt has passed his introductory exams and has now been with us for six months. Our part-time Handyman, Mr Thompson left recently and will be greatly missed for his expertise, we are advertising his position as having an in-house handyperson makes economic and practical sense for the many smaller jobs that crop up.

Awards

In Alresford over the last ten years we have been recognised across Essex and nationally for a range of achievements. Alresford won Essex Village of the Year in 2012 and tied for Essex Village of the year (in its class) in 2019. Although the Parish Council enters the competition and is interviewed by the Judges and has to reach their exacting standards these awards have been community awards with so many other bodies involved. The Church, the Village Hall Committee,

Alresford Colne Rangers Football Club, The Pointer and numerous other organisations and individuals have all contributed to these significant awards that show what a great community structure we have in Alresford – long may it continue. In the past year the Essex Playing Field Association Judges placed the Alresford Playing fields and Play areas in second place out of 200 in the Playing field of the year competition.

Looking ahead....

We are fortunate in Alresford to have a number of experienced Parish Councillors and capable new Councillors plus support volunteers and staff of a very high calibre. We can all only do so much though and we do ask that if residents see issues around the village they think need addressing they report them to us – if we cannot directly help we can often find someone that can get things done.

Very often the Council is approached about a matter where an instant answer cannot be given as most important decision making has to be made (by law) at a Council meeting, this can be frustrating but is part of the local democratic process. This coming Parish year there are intentions to not only maintain what we have but to use Council funds wisely, together with grants, to further improve facilities and services. The Council is grateful for the support it receives.

Frank Belgrove
Chairman
Alresford Parish Council



 [https://www.alresfordpcsessex.uk/
alresford_parish_council.html](https://www.alresfordpcsessex.uk/alresford_parish_council.html)

VACANCY

**Alresford Parish Council has a vacancy for
a part-time Handyman or Handywomen.**

For details contact The Clerk at

alresfordpc@outlook.com

or telephone 01206 615117

Alresford Angling Association

Est . 1968

Firstly, a thank you to all our members who positively replied to our request for support in the purchase of the Grinsted Orchard Lakes complex. Your overwhelming support has enabled us to proceed forward with maintaining this wildlife oasis in the club's possession for the foreseeable future. Our A.G.M. was held on the 29th April in the Village Hall and was well attended. This was our first proper meeting with all our members since April 2019 and there was a lot to catch up with along with the progress regarding the Complex purchase. The club's Treasurer, Ron Tickner, laid out the means by which the club has provisionally agreed to proceed with the purchase and answered any questions arising from this action. Where possible, members have been asked to make a short-term loan and along with membership fees should see the club able to buy the land and retain it as a 3-lake complex combining angling and wildlife.

The start of the new seasons matches got underway with the 3 matches of the Creed Cup being fished on Bramley, Worcester and the Abbey lakes. The winner was G. Spurgin with 27pts in total and the runner-up was A. Loughton with 21pts. Can all members keep an eye on the fixture table or the notice boards on the gates for forthcoming matches, as the lakes in question will be closed for the duration of the competition. If you intend to compete in the club's matches please contact Adrian Loughton on 07480988943. Rules regarding the fishing of matches are also available from Adrian.

Can all members please be reminded to dip their nets, mats and slings in the tanks provided. This is to prevent the spread of disease and parasites between lakes and waterways. It is especially important if you have fished waters outside of the club and could potentially bring in infections and aggressive unwanted plant life. New Zealand Pygmy Weed is evident in some of our lakes, along with Zebra mussels that have a tenuous toe hold in Cox Lake. Both these species can cause major issues when given the right environment and can cause major issues and become very expensive to control. On a less alarming point, net dips can also make these items of equipment smell a bit sweeter.

With start of the new season, can all members please display their parking permits in a clearly visible place on their vehicles with the lock combination section removed. As with the start of all seasons we would like to welcome our new members and hopefully you have received all the information required to get you set up for enjoying the club's facilities. If you have any questions, please do not hesitate to contact the committee through the web-site @ alresfordangling.co.uk. or the bailiffs or any club member who will help you with your query.

Most of the waterfowl present have now paired up and are no longer squabbling over partners but have moved on to squabbling over any living thing that approaches their young. Please be aware, that like most youngsters, their main passion in life is food and will be immediately attracted to ground-bait and loose fed thrown into the water. Please do not leave line, hooks or redundant tackle in your swim when you leave. The single most important thing you can do to help the environment is not to leave discarded waste.

To any new residents to Alresford, if you are interested in fishing, please don't hesitate to contact us. We are a friendly club and would welcome your presence at the water's edge. We offer membership to the under 13's for free and that could be the start of a lifelong passion. It's where we all started.

As always, enjoy your fishing, stay safe and look out for one another.

Tight Lines.
Mike Day (Hon. Secretary)

ALRESFORD BIKERS - Already A-Wheel

We're out and about again!

Many of us a tad rusty maybe, some smothered in cobwebs, but out and about we most certainly are. We ride about the locality promoting safety, good riding, and all that is worthy and fun about motorcycling. Unlike a couple of Herberts we see regularly thrashing their L-Plated 125's down Wivenhoe Road, we never, NEVER, speed in the village. It destroys the good image we've taken 15 years to build. We've had a few shorter rides, out to local haunts where we hang out with tea and bacon sarnies, etc. One of our superbly designed minor-road routes was slightly discombobulated by a surprise road closure in Ipswich last weekend, but that was in favour of our cousins the classic car brigade, so we let them off. It didn't really cause that much bother anyway, as we are well used to "exploring" places off-route! But that's all part of the fun. We go out riding to have fun, after all. There have been a number of surprise road closures recently, and the posting of diversions surely come from Bletchley Park, but we still get there in the end. Today's ride out was fabulous. Mostly back roads, technically challenging, unsighted and off-camber corners, gravel strips in the middle, 50 or so mamils* swarming towards us filling the entire width with total disregard to anyone else being there, and so on. But the best bit was the sun coming out, warming us up nicely, and a lovely refreshment break at Cafe 33, next door to Highpoint Prison (which I would have named Lowpoint, but hey). Brilliant ride today.

It's at this time of year that events and meetings all burst back into life, and we receive invitations for all the things we like to take part in during the Summer. Unfortunately, there are too many of them to do them all, but we attend as many as we can. Occasionally, we have more than one group, attending more than one event at the same time, so we are truly out there. We've checked out a few new places during the Winter. We seem to be developing an affinity with power stations too, having sampled the cafes in the shadow of both Bradwell, and Sizewell in the past month. They are both nice rides out, and there are always other bikers at both, so we enjoy them no matter what. This year we have re-visited a number of our old favourites, and there are many more to come. Bikers can't go for a whole year without visiting Burnham, and with luck and clear traffic, riding the Burnham Bends is fun. Finchingfield is also a regular visit at least once. We've perused the bikes for sale at Crazy Horse a couple of times (sigh), taken a Sunday Ride out to Orford, ogled even more bikes for sale at TTT Motorcycle Village, and been there again for the Sudbury Club bike show. Apart from these Sunday Rides, we've also been out during the week. Those of us happily retired and able to go riding when everyone else is at work occasionally take a day out riding mid-week when many of the cafes are quieter, and plan what we're going to do the following weekend. There are also places we like to go that don't open on Sundays anyway, so we visit them during the week and get the best of both worlds. In case you're wondering, we call a 50 mile weekend ride "short", and 100 miler "good", and we sometimes do more depending on the actual event we're going to. For example, on the Essex and Herts Air Ambulance Run, I normally clock up 135 miles. Sometimes small groups go on much longer day rides, such as our East Anglia Circle, which is well over 200. That's a good day's ride punctuated by tea, cakes, bacon rolls, and more tea! Our Sunday Rides cater for just about everyone, with their differing wants and needs, over time. Short rides, slower, more detailed and technically challenging routes, backroad preferences, seaside routes, other attractions, longer rides, more distant and motorway rides, and so on. Among the more unusual things we've done, is fix punctures, (I've had 4 in the past year alone, which is a record for me), and a ride carrying petrol, thanks to protesters. I have another name for them.

We still have some major events coming up, for example we're still planning to do a trip to Brooklands later in the year, and Sammy Miller's Motorcycle Museum in the New Forest deserves a return visit too. And just because they could, our friends at Copdock Classic Motorcycle Club have moved their show, traditionally in October, 4 September. It will always be in September from now on. That is always a great show. So, for the time being, we'll be out and about, dodging the appalling roads even in our village, which demand fixing before someone hurts themselves, and looking forward to our regular meetings in The Pointer Inn, where Neil and Sam always make us welcome on the second Tuesday of every month at 8pm. Stay safe, everyone!

Al Gillard

*Middle Aged Men In Lycra - cyclists



Tendring Blinds & Shutters

Your Local Solution

Products

Plantation Shutters
Rollers
Verticals
Romans
Perfect Fit
Venetians
Intu
Day & Night
Pleated
Skylight
Motorisation
Curtains

*Buy One,
Get One
Free*

On Selected
Vertical Blinds



Call us today for your **FREE QUOTATION** Checkatrade.com
01255 474241 info@tendringblinds.co.uk www.tendringblinds.co.uk

M.D. Spackman Building Services

Brickwork~Groundwork~Extensions
Fencing~Paving~Maintenance
Certified Digger Driver / Dumper Driver

CSCS Registered

Call Mark on 07811 869316 or 01206 827995
Email: thespackmanhouse@btinternet.com

Alresford, Colchester, Essex

plumbing heating

rupert smith m.i.p.h.e

182 wivenhoe road
alresford
colchester

C.O.R.G.I reg

tel. 01206 824379
mob. 07801 365359

M. J. GREEN

TRADING AS M. J. GREEN TREWORK (WIVENHOE) LTD

Established 1977

41 VANESSA DRIVE, WIVENHOE
ESSEX CO7 9PB

TELEPHONE 01206 825503
(24 hour emergency service)

Mobile phone numbers:

07786 632002 • 07771 638064
07771 638067

- Tree felling contractor
- Surgery, coppicing
- Reshaping, reducing
- Hedge cutting, grass cutting
- Rough gardens cleaned and cleared
- Stump grinding
- Fencing supplied, erected and repaired
- All rubbish taken away
- Suppliers of firewood, logs

Free estimates and advice

Full insurance cover • N.P.T.C qualified

M.P.F Electrical
NICEIC, Approved Contractor & Domestic
Installer

Martin fuller

www.mpfelectrical.com
martyspark66@hotmail.com

Checkatrade.com
Where reputation matters

mobil 07903180828

Rolec car charger installation
Olev government grant registered.

WALKER WORKS

Garden and General Maintenance Services

Ryan Walker
01206 824080
07887 746399

ALRESFORD NEIGHBOURHOOD POLICING

MARCH 2022

RECORDED CRIMES: 11

Crime Types: Assault (ABH) - Assault without injury x 2 - Criminal damage other - Dangerous dog - Domestic x 2 - Other - Section 4a Public order x 2 - Stalking

Incidents reported: 19

Types reported: Abandoned 999 - Concern x 7 - Domestic x 3 - Disturbance - Malicious communications - Nuisance vehicle - Prevent breach of peace - Public order - Suspicious circumstances - Stalking - Other

APRIL 2022

RECORDED CRIMES: 6

Crime Types: Assault (ABH) - Assault without injury - Malicious Communications - Criminal Damage Vehicle - Criminal Damage Residence - Other Criminal Damage

Incidents reported: 13

Types reported: Abandoned 999 - Animal - ASB - Civil Dispute - Concern x 2 - Domestic x 2 - Disturbance - Suspicious Circumstances x 4

MARCH/APRIL 2022

Parking on grass verges/considerate parking.

There have been Reports of Cars parking on grass verges near the school and other parts of the village. This not only damages the turf and occasionally the pavements and kerbs, but causes visibility issues when trying to pull out a driveway and pedestrians having to walk in the road. Drivers mainly do this for consideration of other road users, without realising the other problems it causes. Please park on the road, this actually helps to slow down traffic and avoid parking on junctions as this to causes severe visibility and could cause an accident.

Speeding and Dangerous Driving

Speeding is the main problem again that has been highlighted in the village. Vehicles are being reported for driving at excess speed in the village and driving in a dangerous manner. If you are caught driving in an anti-social manner, you could risk having your vehicle taken.

Please keep the public and animals safe by adhering to the road conditions and signs and drive with due care and attention.

Theft of / Theft from Motor Vehicle

Car theft / theft seems to be on the up

- If you are selling a vehicle, be cautious of those that want to buy - do not leave the vehicle unattended especially with keys in the ignition.
- Do not leave any valuables in the vehicle, especially at night.
- It's easier to remove them than to replace them if you are unfortunate enough to be a victim.
- Always be vigilant
- CCTV is always a good investment to give you peace of mind.

Phone Scams

Scammers are constantly finding new ways to trick people and phone scams are changing all the time. If you've been

the victim of a scam don't be embarrassed to report it. It can happen to anyone.

If you are effected by any scams, please go to <https://www.actionfraud.police.uk/> for online form to report to action fraud, or by ringing **0300 123 2040** Monday to Friday 8am - 8pm.

The information you give to Action Fraud can help track down the scammer.

Have you spotted a suspicious email?

If you have received an email which you're not quite sure about, forward it to the suspicious Email Reporting Service (SERS): report@phishing.gov.uk

BEWARE!

Over a six month period in 2021, there were almost 150 intelligence reports submitted about cannabis edibles across the eastern region - including Peterborough and Cambridgeshire - and police are concerned that this figure could rise as county line gangs use the sweets to entice young people into working for them.

"We'd also continue to encourage anyone with information about drug dealing activity in their local community to report it. All information is vital in helping us to build an intelligence picture across the region so we can then take appropriate enforcement action and protect people from further harm."



LOOKING AFTER EACH OTHER

In these difficult time with the cost of living going up and the effect it will have on some, it is important we look out for each other. Check on your neighbours, especially the vulnerable and elderly from time to time, some have very few callers, if any.

Reporting incidents the correct way To report an incident please ring 101

Or report it online:

<https://www.essex.police.uk/do-it-online/report-a-crime/>

If residents have any concern on suspicious vehicles/ activity/ drugs in the village, please feel free to contact me, with as much detail as possible, including contact details.

Email- julia.brandon@essex.pnn.police.uk



OCM
Orchard Cottage Montessori
Nursery Ltd
Happiness and learning grow Together



- Outstanding nursery education for girls and boys aged 2-5 years
- Government funding accepted for 3 and 4 year-olds
- Set in beautiful, secluded grounds in the village of Alresford



For more
information
contact us
today

www.orchardcottageмонтessori.co.uk

01206 825607

Email: o.c.m@btconnect.com

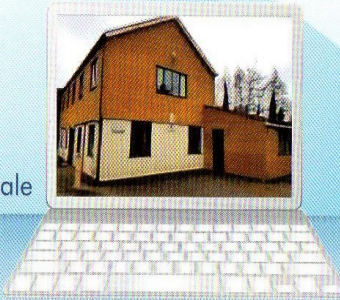
Tending Laptops

Micro Repair Centre

07305 076777

Repairs to board level

Quality refurbished laptops for sale



1 Orchard Business Units

Cockaynes Lane, Alresford, Essex, CO7 8BZ

info@microrepaircentre.co.uk

www.microrepaircentre.co.uk

ALRESFORD VILLAGE SHOP

Colchester Main Road

01206 828169

07766910713

Extended Opening Hours:

Monday - Saturday: 5.00am- 9.00pm

Sunday: 6.00am - 8.00pm

New, more variety stock available including a wide range of beers, wines, spirits, groceries, confectionery, soft drinks etc.

Hot food: sausage rolls & pasties

LOOK OUT FOR OUT SPECIAL OFFERS

MyHermes Parcel Label Printing, Send &

Return Service also Collection Point

Printing Service & Payment Facility

available in Store

Agents for Danes Launderers & Dry Cleaners

Cash Machine

Newspaper Delivery

Customer Car Park



Cleaning, Washing & Ironing

Trained
& Insured



Domestic
Commercial
One-off
New Builds

CLEAN Breeze

Professional clean,
tailored to meet your needs

Call Victoria on 07941 717372



www.simplyhaberdashery.com

Check out our vast range of products and low prices

Fabrics, quilting accessories, Braids & trimmings, buttons, Cords, Elastics, Fasteners, Sewing & mending accessories, Sewing machine accessories, Threads, Velcro, Ribbons, Zips, Tapes and much more....

**Free delivery
or shipping!!**



01206 581177

info@simplyhaberdashery.com

Paypal and all major credit & debit cards accepted

MARK BRUMPTON TREE SERVICES

TREE SURGEON

- ♣ Reshaping,
- ♣ Reducing
- ♣ Surgery Work
- ♣ and Clearance

FULL INSURANCE

For Free Estimate
and Advice

TELEPHONE:
01206 825498
or **07885749934**

Roxburgh,
Colchester Main Road
Alresford
CO7 8DG



SALES SERVICING REPAIRS HIRE
OF

GARDEN MACHINERY AND EQUIPMENT

*

HEDGE TRIMMERS – CHAINSAWS - STRIMMERS

WALK BEHIND MOWERS – LAWN SCARIFIERS

CHIPPERS – SHREDDERS – ROTAVATORS

RIDE ON MOWERS

*

UNIT 1 FRATING HALL FARM, CHURCH ROAD,

FRATING, COLCHESTER, CO7 7HD

TELEPHONE: 01206 250990/07860 411024

WEB: www.gbfarmservices.co.uk

EMAIL: gbfarmservices@btconnect.com



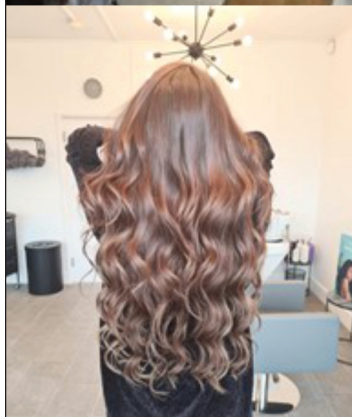
Sage Hair Studio Ltd

45 Station Road

Alresford

CO7 8BU

01206 616970



AJ HOME

IMPROVEMENTS
and repairs

GENERAL BUILDING SERVICES

EXTENSIONS

GARAGE CONVERSIONS

KITCHENS AND BATHROOMS

PLASTERING

FENCING, PAVING & PATIOS

Professional - Reliable - Affordable

01206 628628

07766 565249

enquiries@aj-home.co.uk





DUNMOW






★★★★★
4.9 RATING ON OVER
600
REVIEWS

SKIP HIRE.
METAL RECYCLING.
GRAB HIRE.
AGGREGATES & TIPPER HIRE.
HAZARDOUS WASTE.
ROAD SWEEPER HIRE.
WASTE COLLECTION.
LIQUID WASTE DISPOSAL.



01206 307070 | DUNMOWGROUP.COM 

wjr
Mechanical Services

COMMERCIAL & DOMESTIC PLUMBING

-  Free, no obligation quote
-  Boiler renewals and servicing
-  Vaillant approved installer
-  Bathroom design & installation
-  Water main repairs/replacements

Alresford based – call Russel on
07971 519912

Carla Bryant

Nova Garden Care

GARDEN CARE AND SERVICES
GRASS CUTTING
HEDGE TRIMMING
PLANTING
WEEDING
MAINTENANCE

07890 602626
Novagardencare@hotmail.com
Facebook WhatsApp

SJ conversions

Builder

Free Estimates

EXTENSIONS
LOFT CONVERSIONS


NEW KITCHEN FITS
NEW BATHROOM FITS
GARAGE CONVERSIONS

07899045847
01206824752

stuartjohnbush@gmx.co.uk


L. J. Watts
Memorial Stonemasons

Together we will create a perfect memorial tribute for your loved one



- Est. over 300 years
- Dedicated craftsmen
- Bespoke memorials
- Personal hand carved designs
- Additional inscriptions
- Cleaning and restoration

01206 867 167
www.ljwatts.co.uk

BRAMM 

SIBBONS

PLANT & TOOL
HIRE

TRADE/DIY
STORE

Your local hire and trade centre!!

Family run since 1964.

Open Mon - Fri
7 - 4.30

PLANT & TOOL
REPAIR

Tel: 01206 823448
Fax: 01206 825266
sales@sibbons.co.uk
www.sibbons.co.uk



Elegant WINDOWS,
Beautiful DOORS
& Stylish CONSERVATORIES



As seen on TV



Installed according to the Tricept
Better Fitters Code Of Practice

Suppliers of TRICEPT Multipoint
Locking windows, doors and
conservatories. Fascias, soffits
and cladding also available.



Wherever you are we deliver quality

HOME IMPROVEMENTS

01206 823903

www.aandk.co.uk

5 minutes from Essex University on the Main Road in Alresford

A&K House, Main Road, Alresford, Colchester CO7 8DB

IAN LONGHURST BUILDER

Established 1982

WORKING IN WIVENHOE FOR OVER 30 YEARS!

All external work inc. Brickwork and Roofing

All internal work inc. Kitchens and Bathrooms

Free Advice and Estimates

Speak to Ian or Tina:

☐ 07484 724262

ianlonghurstbuilder@outlook.com

SMALL SCALE SKIPS



1½ & 2 YARD MINI SKIPS
COMPETITIVE RATES

WE DELIVER

SAND BALLAST STONE MOT TYPE I & II
SOIL CRUSHED CONCRETE

01206 822770 OR 07802 265712

PHONE ANYTIME

JFS

Heating, Plumbing,
Electrical and
Renewables Specialist

Friendly and Trustworthy
Local Engineer

Please Call Jack on
01206 820599
07818 034032

17 Heath Road
Alresford
Essex
CO7 8DT



AM GAS SERVICES

Specialist in Gas Service & Repair

Bathroom Design & Installation



Call us today
(No call out charge)

075811 66959
01206 826122



Proud members of
Checkatrade.com
Where reputation matters



Accredited installer &
can offer up to
12 years warranty

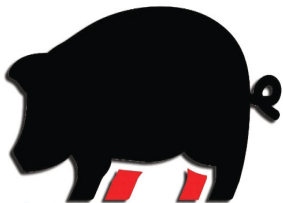


GAS SERVICES

- ✓ Boiler Servicing From £40
- ✓ All Makes & Models
- ✓ Central Heating Installations
- ✓ Discount for OAP's
- ✓ LPG Qualified
- ✓ 24hr Call Out
- ✓ Alresford Based.
- ✓ Covering Colchester, Clacton & Surrounding Areas



www.amgasservices.co.uk



BECKY'S BUTCHERS

Family Run Butchers / **Bespoke Cutting Service**

Quality Meat / **For Private & Trade**

07720833207
beckysbutchers@gmail.com
beckysbutchers.co.uk

**Badley Hall Farm, Great Bromley,
Colchester, Essex CO7 7UU**

Open Wednesday, Friday and Saturday
10am - 4pm

Local Beef, Lamb, Pork, Chicken and Game

Award Winning Sausages / Handmade Pies

BBQ Meats / Frozen Fish

Eggs, Jams and Chutneys

Christmas Turkeys and much more



ALRESFORD FISH BAR

51 Station Road, Alresford CO7 8BU

**We offer delicious food at
competitive prices**

**Fish and Chips, Kebabs, Burgers,
Falafel, Wraps plus lots more**

See our full menu at
<https://alresfordfishbar.com/>

Order online or
telephone **01206 616360**

Delivery available within
a 5 mile radius

Please note:
**There is a minimum order
of £15.00 plus £2.00 delivery**

Download our App



Verified by



ALRESFORD BOWLS CLUB

Current playing & life members are invited to attend our



ANNIVERSARY TEA

At
Alresford Village Hall
On Monday, July 11th at 3pm

For catering purposes, this is a ticket only event. Your free tickets may be obtained from a committee member at the village hall at the beginning of each bowling session.

For further information call Jenny 01206 827756



Alresford Gardening Club

A presentation and demonstration of

“Willow Weaving”

by **Debbie Hart**

Alresford Village Hall

Ford Lane, Alresford. CO7 8AT

Monday 6th June at 7.30pm

Non-members & visitors very welcome £2.50

ALRESFORD W.I.

WARMLY INVITE YOU TO A FASHION SHOW

BY TOGGS OF BRIGHTLINGSEA

FRIDAY 17TH JUNE

7.30PM

AT ALRESFORD VILLAGE HALL

For further information contact Chris James on 01255 764769

RAFFLE

ADMISSION INCLUDING REFRESHMENTS £3.00

THANK YOU ALRESFORD

I would like to say an enormous and heartfelt thank you to everyone who played a part in making the coffee morning for Ukraine on 26th March such a wonderful success. By the end of the morning £1,240.06 had been raised with the final total reaching £1,326.56.

So to all my wonderful helpers, all who donated money, raffle prizes and cakes and everyone who came on the day, a huge thank you.

I couldn't have done it without you all and together we were amazing.

Lyn Watson

ALRESFORD ADVERTISER CONTACT DETAILS

EMAIL: alresfordadvertiser@gmail.com **TELEPHONE:** 01206 825739 **ADDRESS:** 22 Station Road, Alresford, CO7 8BT

ARE YOU INTERESTED IN ADVERTISING?

For enquiries about advertising your company or organisation, please contact us via the email address above

CORRESPONDENCE

Any correspondence for publication must be accompanied with your name and address or that of your organisation.

DISCLAIMER

Submission of material does not always guarantee inclusion within the publication, and advertisements and editorials are published in good faith. The editor cannot be held responsible for the accuracy of any advertisements placed by advertisers. Editorial material does not necessarily reflect the views and opinions of the editors and neither editorial nor advertisements are to be read as recommendations on the part of the editor

COPY DEADLINE

The editorial and advertising deadline for the next edition will be:
8th JULY 2022