

THE ALRESFORD ADVERTISER FEBRUARY/MARCH 2022

Established 1970

THE AUTUMN CENTRE TREASURER/TRUSTEES URGENTLY NEEDED

We are a small independent charity, providing lunches to the local community on a weekly basis.

Our main sources of income are from our shop, selling mobility aids and any grants applied for.

We are successful in maintaining our accounts on Chromebook and spreadsheets.

Your application and CV for this position should be sent to Mr Edward Brown (Deputy Chairman) to the address or email below.

The Autumn Centre, 1 Osborne Court,
Victoria Place, Brightlingsea
Essex, CO7 0EB

Email: theautumncentre@hotmail.co.uk

ALRESFORD FETE ORGANISING GROUP (AFOG)

Does Alresford want a Jubilee Celebration or Village Fete this year?

Since the Covid Pandemic started in early 2020 village events have been postponed or cancelled and the last two village fetes have accordingly been affected. AFOG have under difficulty managed to provide Christmas events for the Over 75's in this period following Covid guidelines and sterling work from volunteers.

However, in this period our group has sadly decreased in numbers and are also hampered by ongoing health and ageing problems.

We need people who would like to get involved from the onset of events and of course on the day of the event, otherwise we sadly will not be able to organise whole community events in the future.

If Government Covid rules allow there will be an open meeting for all at the Village Hall on **Thursday 24th February 2022 at 7.30pm.**

New or Old residents to our village will be welcome and let us hope with new blood we can create a group that can organise events for years to come.

WI ANNUAL QUIZ!

Friday 25th March 2022

Alresford Village Hall

starting at 7.30pm

Entrance £3.00 per head

Teams of 6 per table

Bring your own drinks and nibbles

Our Quizmaster will be Chris Sanderson

**To book a table, please contact:
Allyson Salmon on 07742 918062**

**To comply with COVID guidelines, the Hall will
be well ventilated so warm clothes are
recommended**

ALRESFORD CRAFT & FARMERS MARKET

Alresford Village Hall
Ford Lane CO7 8AT

5th February 2022
9am - 12 noon

A variety of food and craft stalls

Free Admission

Free car park and disabled facilities

COVID guidelines will be in place and of course this may prevent the market being held. Unless exempt, we politely ask that face coverings are worn when walking around the market.

For updated information, please check the Alresford Craft and Farmers Market Facebook page.

Over 1200 copies delivered to every household & business in Alresford
Also available online via the Parish Council & Village Hall websites:
www.alresfordpcsex.uk & <https://e-voice.org.uk/alresfordvillagehall/>

St Andrew's Church



Find us on fb: [ParishChurchesofAlresfordElmsteadThorrington-TenpennyVillages](https://www.facebook.com/ParishChurchesofAlresfordElmsteadThorrington-TenpennyVillages)

www.tenpennyvillages.uk

We are now holding regular services at the three Churches in the benefice.
Further information can be found on the notice sheet by going to: <http://tenpennyvillages.uk>

ST ANDREW'S REFLECTIONS

Rest up

During the first Lockdown a clever soul suggested that we clapped for our NHS heroes. The Street Artist Banksy came up with a mural where a child was playing with a superhero doll – it turns out that the caped crusader depicted was a nurse! Various News items reminded us of the heroic sacrifices that front line cleaners, carers, nurses, Doctors, and essential workers made. For eighteen months my wife Cathy, has been going into work at the dental practice and having to suit up like she is sorting out the Fukushima plant! I was so humbled witnessing over a 120 hundred new volunteers stepping up to assist with foodbank and work so hard right the way through lockdowns and various "Plan B'S".

We recognise and give thanks for the many folks who have been heroic over the last couple of years. But can we widen out this thought to think through the cost of heroism. Dare I say

– as the media spotlight moves on from our dedicated heroes many will be left feeling exhausted. I recently caught up with some of the folks at the medical regiment who have been drafted in to assist with vaccinations (including the Falklands) and the Ambulance service. So many people have gone above and beyond but what next. We cannot go on expecting folks to giving out – above and beyond again and again. Mechanics will tell you that if you rev an engine high for a long period time something is going to break. I did hear the story of an American tourist who hired a Ferrari in London and drove it up to Birmingham – she thought it was an automatic and after sticking the manual into first gear proceeded to cruise up the motorway to Birmingham the Engine needed a complete rebuild. It's a crazy but true story that makes us think of the challenge of rebuilding after some of us have been "revving high" for a long time.

Having had a significantly challenging couple of years since arriving in the autumn of 2019 I am trying to be intentional about resting to rebuild. I have even started playing the guitar again. In what ways do you relax and recharge? If you enjoy a good walk in the countryside – apparently you are engaging in "green bathing". If you take your pooch for a regular walk, that routine is proven

to reduce blood pressure and help keep your heart healthy. Within the 5,000-year scope of teaching found in the Bible there is a command to keep the Sabbath holy, that translates to having a full 24 hours off per week. I plan and work quite hard to achieve a full 24 hours off a week. Jesus who had a wandering ministry, knew what it was like to be "constantly on the go". He had a special place where he would go and catch up with his friends, Mary, Martha, and Lazarus. Their house was in the village of Bethany, it was a place where Jesus could relax and be with friends.

So, my question is: how do we care for our heroes? How do we care for our exhausted heroes? How do we care for ourselves? Do we have a Bethany place? Do we take a day off each week? We are all so fortunate to live in such a beautiful part of the world – let's not take it for granted! The trouble with busyness is there will always be something else to do – but we need to plan to take time out. They say a change is as good as a rest, I wonder if you have made and then failed with any new year's resolutions – I think we can start them any month. It's not about the starting or the failing is about the starting again or the "keep on keeping on".

As we walk through 2022, we will face fresh challenges, but I have found that however big the challenges, no matter how big the in tray is piled, taking 24 hours off a week helps to put things into perspective. Whether its green bathing or driving a Ferrari I pray that you will find things that help you to relax and recharge. Think through what is your Bethany place and make sure you have times each week to relax – do you work through lunch or take a break and reset in the middle of the day?

If you purchase a new bit of equipment, you would normally follow the instructions manual. Christians believe that God made us and that 5,000 years of teaching in the bible are actually our instruction manual for life.

Let's be kind to our heroes and ourselves, time out is never wasted and nobody on their death bed ever said, "I wish I worked more!" In the words of the Carol "God rest ye merry Gentlemen". Whatever your gender may you know a time to rest and recreation each week.

Every blessing
Rev Andrew Fordyce MBE

ST ANDREW'S CHURCH CONTACTS

Rector: Rev Andrew Fordyce - 01206 920848
Email: rector@tenpennyvillages.uk

Curate: Rev Tim Solosy
Email: revtsolosy@gmail.com

Associated Priest: Rev Pauline Hart - 01206 826318
Email: assocpriest@tenpennyvillages.uk

Churchwarden: Wendy Wilson - 01206 825040
Email: stachurchwardens@tenpennyvillages.uk

Bookings for the Hub: Meg Burdus - 01206 820618

Direct Animal Feeds

01206 827035

The complete range of animal feeds, bedding and accessories for

Horses • Dogs • Cats • Small Pets • Poultry

Opening:

Mon - Fri: 9am - 5pm
Sat: 9am - 4pm

Local delivery available

Email: directanimalfeeds6@gmail.com

Maggie: 07885082281

Unit 3, Heath Farm
Cockaynes Lane
Alresford
C07 8DA



ALRESFORD CRAFT & FARMERS MARKET 2022 DATES

The market takes place on the first Saturday of the month from February through to December

5th February	6th August
5th March	3rd September
2nd April	1st October
7th May	5th November
4th June	3rd December
2nd July	

THE CHARITY BAG

Still collecting used stamps for Bone Cancer Research "until there is a cure"

Spread the word and tell friends and family to share our appeal. Every stamp, Horizon label (the square white and gold labels that the post office stick on everything instead of stamps), collection and 1st day covers will help raise vital funds for the Bone Cancer Research Trust.

- Collecting coats for Dog Rescue
- Still collecting wool for charity knitters
- Still donating to the 'Baby Bank' Colchester
- Trauma Teddies for the emergency services
- Still knitting for Christian Hope International, sending to Moldova and Europe

KNITS

WI, the Church and the local foodbanks have very kindly taken knitted items which could have been used at Christmastime. Thank you for your help.

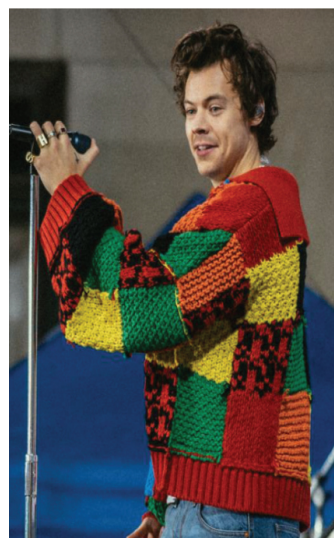
Bags of wool continue to come in, including some knitted items I tried to use. I didn't even know what they were for! A "specialist" who *knows* these things as taken the large chunky knitted squares and will turn them into twiddle mats for the dementia units. And what! I thought were papoose carrier liners for baby/toddlers, turned out to be dog coats - we laugh, we learn!!

STAMPS

Thank you for the used stamps from the Christmas card envelopes. Magnificent colours this year!

Thanks for all that you do throughout the year, what could we do without you - what a wonderful team effort! For acknowledgement, please leave a contact name and telephone number with your donations. Delivery and collections available.

I wish you all a belated Happy and Healthy New Year. May 2022 be kind to you.



Happy Knitting!
Take care as always

Christine Stimpson
2 Coach Road, Alresford
(opposite the Dr's Surgery)

PS. Just seen something that made me smile. The singer HARRY STYLES in a huge knitted cardigan. It's now in the V and A museum. Apparently the pattern is available to download. Made up of 48 squares and 14 panels. A copy of the pattern can be found on [Pinterest](https://www.pinterest.com)

Harry Styles' cardigan was designed by JW Anderson
Photo from GETTY IMAGES (a coloured copy can be found at <https://e-voice.org.uk/alresfordvillagehall/>)

ALRESFORD VILLAGE HALL

Charity Commission Number: 301233

The Village Hall website:

<https://e-voice.org.uk/alresfordvillagehall/>

The Village Hall Facebook:

<https://www.facebook.com/Alresfordvillagehall/>



The Village Hall Christmas event was a success on a very cold evening with Father Christmas making a special visit to see the children of Alresford. Live music from "Silence the Sirens" entertained from outside, the Bar, Bar-B-Q, carousel and beverages and cakes in the hall allowed all to enjoy a semblance of normality in the festive period.



We enter a new year with aspects of uncertainty with regards to the Covid virus.

As I write this in January, we are still permitted to remain open, and all groups can meet adhering to Government Plan B guidance.

I am pleased that most of the groups have returned after the Christmas break and can operate very nearly as normal. Over the break the Village Hall has had Acoustic Absorbers fitted to the ceiling to reduce "reverberation time" or more simply excess echo within the hall. This will assist the sound/noise balance within the hall allowing easier conversation and will certainly benefit those with hearing difficulties.

Also, we have installed "4 in 1" air flow units. These will allow air circulation, de-humidification, conditioning, and heating whilst always using air that has been filtered from the outside. This improvement is especially important as we operate in Covid times but will be beneficial to the comfort of hall users for many years to come.

Both improvements were grant funded by using a Covid scheme managed by Essex County Council.

The Trustees are hoping to complete the transfer to online banking in the next quarter, enabling swifter and less work required when taking hall bookings, and following on from this all-regular hire groups will be invoiced quarterly rather than monthly that is currently the norm for most groups. This will assist the Treasurer to lessen the very busy workload that is ever increasing due to healthy private hire as well.

HALL/PAVILION HIRE

The Pavilion/Bar is now available to hire for either individually or as well as the Hall. All enquiries should be via the **Village Hall booking clerk, Pat Burmby** on **01206 823983** or via email at enquiries@alresfordvillagehall.co.uk



Thank you

Russell Milburn, Chair AVHMC

MOBILE LIBRARY Alresford Village Hall

The Mobile Library visits every:
3 weeks

Day of visit:
Thursday

Time of Visit:
11.55am to 12.25pm

Next visit dates:
17th February 2022
10th March 2022
31st March 2022



CLUBS AND SOCIETIES NEWS

Do you run a club or society? If you would like something included in the Alresford Advertiser, please email alresfordadvertiser@gmail.com

ALRESFORD BOWLS CLUB

You are invited to join us to play short mat carpet bowls

**SESSIONS ARE HELD EVERY MONDAY
2.00PM AND 7.00PM
ALRESFORD VILLAGE HALL
JUST COME ALONG**

FREE TRIAL SESSIONS ARE AVAILABLE TO NEWCOMERS

THEREAFTER THERE IS A £10 ANNUAL FEE AND £2 PER SESSION WHICH INCLUDES REFRESHMENTS

For further information contact
Jenny Holben on
01206 827756 or 07714 875001



1ST ALRESFORD BEAVERS

Beavers meet on a Tuesday evening in term time from 6.30pm to 7.30pm. It is for boys and girls between the ages of 6 to 8 years old.

Beaver Scouts enjoy making things, outdoor activities, singing, playing games, going out on visits, investigating nature, listening to stories, learning how to be safe and most importantly, making new friends.

We currently have spaces available at Beavers so please email alresfordbeavers@outlook.com if your child is interested in joining or to add young people under 6 years to our waiting list.

Cubs and Scouts for older children meet at Elmstead Community Centre on Wednesday evenings. Please contact us at the above email address for further details.

SIMPLY SINGING

Session Dates

4th & 18th February 2022
4th & 18th March 2022
1st & 29th April 2022
6th & 20th May 2022



In view of possible ongoing COVID restrictions/regulations, anyone wishing to attend a Simply Singing afternoon is recommended to call either Jeanette on 01206 825008 or Chris on 01206 823824 to check if it is still able to go ahead.

**For more further details about the group, please contact:
Jeanette: 01206 825008 or Chris: 01206 823824**

We meet on **Wednesday afternoons from 1pm through to 4pm** on the following dates:

2022
2nd & 16th February
2nd & 16th March
6th April
4th May

In view of ongoing Covid regulations, anyone new and possibly interested in coming along are recommended to call me prior to check the meeting is still going ahead

Please contact me for more details in the meantime on 07484 334698
Chris Sanderson

ALRESFORD WI

Future meeting dates 2022

10th February
10th March

The Committee decided to cancel the January meeting due to the concerns over the rapid spread of the Covid virus after Christmas. We are now starting to hold out meetings every month and hopefully there will not be any further Government restrictions.

Our Speakers for the next two months are Ann Latchford of the Colne Valley Tea Company, February 10th, and Lucy Smith who will be talking about Signs and Symptoms of Heart Attacks in Ladies on March 10th. There is a warm welcome awaiting any ladies who would like to join us and see if Alresford WI suits them.

For further information please contact:

Chris James, 01255 764769 or Hilda Newbold 01206 823477

THE AUTUMN CENTRE LUNCH CLUB

**TUESDAYS at ALRESFORD VILLAGE HALL:
12.30 - 2.30pm**

**FRIDAYS at BRIGHTLINGSEA COMMUNITY
CENTRE:
12.30 - 2.30pm**

2 Course Meal including Tea and Coffee - £8.00
Transport, door to door, if needed - £4.00
Raffle - £1.00

We welcome back all past members and newcomers.
It is not too late to join us for these friendly meals.
Any further enquiries, please phone **01206 303702**

ALRESFORD VILLAGE HALL REGULAR GROUPS

Below are the regular hire groups currently involved
using the hall facilities in normal times:

- **Mindfulness Yoga** meet Monday mornings
- **Alresford Indoor Carpet Bowls Club** meet Monday afternoon/Evening.
- **Alresford Gardening Club** (affiliated to the RHS as Alresford Horticultural Society) meet on the first Monday of the Month, March to November
- **Alresford Lunch Club** meet every Tuesday morning and early afternoon
- **1st Alresford Scout Group (Beavers)** meet Tuesday Teatime.
- **Dog Training Classes** Tuesday and Thursday evening.
- **Tai Chi** meet every Wednesday morning.
- **Alresford Art Club** meet every other Wednesday afternoon.
- **Alresford Women's Guild** meet every other Wednesday afternoon.
- **Yoga** meet every Wednesday evening
- **Exercise Classes (Extend)** meet every Thursday morning.
- **Young People's Dance School** meet every Thursday afternoon
- **Alresford Women's Institute** meet the second Thursday evening of the month
- **Alresford Camera Club** meet the first and third Thursday evening on the month
- **Alresford Calligraphy Group** meet every Friday morning.
- **Simply Singing** meet every other Friday afternoon
- **Alresford Craft and Farmers Market** on the first Saturday morning of the month (February to December)
- **Alresford Colne Rangers Football Club** (using the Pavilion at the rear of the hall)

If more information is needed for any of these groups, please visit the Village Hall website or contact Russell Milburn on 01206 825739

ALRESFORD BOWLS CLUB

Firstly our pre-Christmas Fish & Chip supper (thank you Henleys) on the 13th December went down well with our members & partners. It was nice to enjoy a social evening together after such a long break. We had a table raffle & some games with Peter Wade winning the bowls challenge & Jim Hatch scoring the highest in the golf game. Well done.

Secondly, to get back to indoor carpet bowls on 10th January, 2022 was a happy day. We have 44 Monday afternoon sessions booked in this year & a few less for the evening session (due to another long standing booking). We still have places available for the evening sessions. Its good fun & you get a bit of exercise at the same time (& a tea/coffee).

As we're in our 30th year (Pearl) a "gathering" of some sort will happen asap where we can look back at some carefully kept records/ photos of times past & enjoy some refreshments & reminiscences.

Contact: Jenny Holben, Chairperson
01206 827756 m.07714 875001

ALRESFORD CAMERA CLUB

The ongoing Covid situation has unfortunately meant we've had to cancel two club evenings, and hence some subsequent re scheduling of our programme has been necessary. Existing members are being advised of any changes via email, but if you are a non-member and interested in coming along, please contact our Club Chairman, John Merison on 01206 250846 for the latest information.

The club has its own website at www.alresfordcameraclub.org.uk where details of the programme can be found. Every attempt will be made to keep this up to date, but to be certain please contact John as above.

ALRESFORD GARDENING CLUB

Covid regulations allowing, our new season will commence on Monday 7th March with the customary AGM. This meeting will amongst other matters, give details of the proposed programme of talks, which it is hoped will appeal to anyone with a gardening or horticultural interest.

If there are any meetings where speakers are still to be confirmed post the AGM, these details will appear via our entry in the Alresford Advertiser Club News.

For more details about the Gardening Club please contact Chris Sanderson (Chairman) on 07484 334698

ALRESFORD 'BOOKSWAP OR BORROW' KIOSK

Villager, Cherry Watson who volunteers her time in helping to look after the Community Garden has also now produced the wonderful new scheme that is a 'Book swap or Borrow' library based in the unused telephone kiosk adjacent to the Railway Station in Station Road.

Cherry by herself accumulated an initial supply of books, converted the interior of the kiosk and continues to oversee the kiosk library ensuring the books are well presented and regularly refreshed and making sure that the kiosk is clean.

The service is free to all and relies on the honesty of the people of Alresford. New stock is welcomed either by a swap or donation.

Already, the kiosk library has created lots of interest and has become a welcome addition to the people of Alresford.

Well done and Thank you Cherry



Play Paws Empawrium

Natural dog treats

Enrichment Toys and Accessories
Online AND In-store shopping



 @PEmpawrium

 @playpawsempawrium

 Play Paws Empawrium

12b Orchard Business Units
Cockaynes Lane
Alresford Essex CO7 8BZ

07585 440815

sam@playpawsempawrium.co.uk
www.playpawsempawrium.co.uk

A J R

Boiler Breakdown &
Service Engineer
General Plumbing



629704

Tel: 07887683335

Email: tonyrook6919@gmail.com

COLNE VIEW DENTAL SURGERY LTD
53 Ladysmith Avenue, Brightlingsea
Essex CO7 0JD

01206 302307

Piers Lambert Bchd (Leeds 1992)

**MODERN FRIENDLY FAMILY PRACTICE
FREE ON-SITE PARKING**

**WHEELCHAIR ACCESS AND DISABLED FACILITIES
ONLY WHITE NON MERCURY FILLINGS
CEREC 1 VISIT CROWNS NOW AVAILABLE
COSMETIC WORK - TOOTH WHITENING
NO REGISTRATION NECESSARY
EMERGENCIES WELCOME
VISIT OUR WEBSITE AT - www.colnedental.co.uk
Major card payments accepted**

I. BLANCHETTE PLUMBING AND HEATING

Bathroom Installations
Ceramic Tiling
All Domestic Plumbing
Central Heating Systems
Boiler Upgrades
Boiler Maintenance Repairs
Power Flushing
Under Floor Heating
Pressurised Water Systems

Established 30 years
Reliable and Friendly Service

Tel: 01206 827464

Mobile: 07967 533 314

GASsafe reg no: 64249

ian.blanchette@talk21.com

WYVERNWOOD - EXCITEMENT CONTINUES TO BUILD

Here at Wyvernwood work has continued over the festive period and into the new year, with more and more adventurous activities, wonderful woodcarvings and fantastic facilities beginning to emerge. As construction continues, we progress our pursuit for like-minded individuals to help launch Essex's only Enchanted Lost Kingdom.

We are grateful for the wonderful support to date from everyone in and around Alresford and want to take this opportunity to say thank you. An important goal for us, as the newest member of this great local community, is to give back and offer local employment opportunities for local people.

We've already begun the process of growing our team with members who share our vision to create an experience where families of all sizes can escape the hustle and bustle of everyday life, escape their screens and to reconnect with nature.

We recently began to welcome CVs and cover letters from members of the local community who would be interested in attending a recruitment day. Our Experiences Director Nick White, an Alresford resident himself, explains "We've had a wonderful response since our last article was published and it's great to see there's a good deal of talent in the local community. We will be holding a recruitment day in the village ahead of launch and look forward to meeting those who have applied."

Our recruitment day will take place in March and will be by invitation only to ensure we offer a COVID-19 safe environment. We have positions available for both full time and part time on a seasonal basis in a variety of roles including Duty Management, Catering, Retail, Entertainment, Maintenance and Park Support.

Should you be interested in being part of the magic, please send your CV and a cover letter detailing which type of role you would like to be considered for to careers@wyvernwood.co.uk. We can't wait to hear from you.



ALRESFORD ANGLING ASSOCIATION A brief review of the club's early days

It's now over 50 years since the Alresford Angling Association was established here in Alresford, it's aim was to provide a traditional, peaceful recreation for local residents.

The efforts of one man to establish a fishing club were successful, when he gained the support of the Parish Council and together, they were able to negotiate an agreement with, what was at that time, The Alresford Sand and Ballast Co. The Company would allow the large 10-acre disused gravel pit lake, to be used as a fishery. The arrangement was that the club, when it was properly established with a committee would be able to rent the water, an agreement which still exists today with the Bretts Aggregate.

The late Arthur Bareham was that man; he was a resident of Alresford and a keen angler. As a part-time youth club leader with the Wivenhoe youth club, Arthur would often hire a mini bus and take a group of boys (including my son Peter) on a day's fishing on an Essex or Suffolk river or lake. This was an introduction for many to the pleasure of the countryside and of course fishing they also learned the countryside code, of respect for the countryside, the fish they caught and wildlife. Several of those boys are still active members of the Club today. In memory of Arthur, the lake, will in future be named, Arthur Bareham Lake. This will also be of benefit as a

clear reference to members in particular, as to which lake is being referred to in the Club's News Letters.

Since those early days the club has progressed considerably, now managing five fishing lakes, four located in Alresford and one at Frating Abbey Farm, and with over three hundred members, mostly from the local area. The club's small group of regular volunteers maintain the lakes, and the surrounding land to a very high standard. The club is in regular contact with both the Environment Agency and the Angling Trust concerning conservation, and the welfare of all the wild life in and around the lakes.

What is now the much-admired Grinsted Orchard lakes, off Cockaynes lane, was once The Grinsted apple orchards, as many local ladies will recall their daily cycle ride to pick and process the apples, prior to the land being excavated for gravel extraction some twenty-five years ago.



Photo provided by Ron Tickner

A group of mainly Alresford lads at Alresford pit after a pre-Christmas match. Arthur Bareham centre back with glasses.....circa 1980s

ALRESFORD ANGLING ASSOCIATION

Est 1968



Welcome to the first issue of our bi-monthly newsletter. It was thought only right and proper that as we have been in existence for more than 50 years as an Alresford based club, we should contribute and support the Alresford Advertiser. It is due to Arthur Bareham's foresight back in the mid 1960's that the club came in to being and as a mark of respect and remembrance Alresford Lake has been renamed the Arthur Bareham Lake.

It is through these winter months that a lot of work is done around the lakes with repairs to swims and managing the vegetation. The Abbey lake has certainly benefited from this and the massive assistance from the landowner, who supplied machinery and ballast, was greatly appreciated. There were many wheelbarrow trips back and forth and several Radox baths to ease aching backs and legs, but the improvements are plain to see. There is always the need for help on these work party's and any assistance is always appreciated no matter how small the input, as managing the lakes is rather like painting the Forth Bridge. One item that you can all contribute to is the removal of litter even if it not yours. It is not acceptable to throw rubbish into bushes, poke crisp wrappers down the ends of tubular posts and leave food items within the confines of swims. Most members are very supportive and leave with all their wrappers containers etc., but there is always a minority that think that someone will always come behind with a tissue and a brush. The continued efforts of the merry band of members that contribute to the Wednesday work party around the Grinsted Orchard Lakes and also to the Thursday group at the Arthur Bareham Lake really shows success. As a result, as well as an abundant diversity of birds on and around the lakes, we are now starting to see Water Voles starting to show, a once common sight until released Mink decimated their numbers.

Matches have continued through the season and the trophy competitions are well underway. Will all members wishing to fish in league or non-league matches please ensure that Adrian Loughton, the Match Secretary, has your contact details. It is as important to notify him no later than 21:00 hrs the day before if you wish to compete and the same if you wish to cancel. For all the non-match anglers, please keep an eye on notice boards informing of when and where matches are taking place along with the list of competition dates sent to you all on joining this season. Avoid the disappointment of turning up to a venue to pleasure fish only to find a match in place. Where possible there will be vacant pegs left for those not fishing in the match.

If you go onto the club's web page, alresfordangling.co.uk you will notice that this club is a keen advocate of the Angling Trust and Fish Legal. We would strongly recommend that all members join on an individual basis as they really have been the voice of angling and during these trying times of the Covid Pandemic have lobbied the Government to enable us to fish where a lot of outdoor activities were stopped. Your support will add weight to some of the issues they are trying to resolve, getting the water companies to clean up their act is one currently in the spotlight. Despite the dreaded Covid still being with us, all of us that enjoy the sport have benefited from the steadying and relaxing influence gained from fishing and at least if the fish have not always been obliging, being outdoors has to be a bonus.

It is with some sadness that we have to announce the death of two of our members. Vic Hall was a regular Carp angler on both Cox and Alresford lakes and was distinctive in his red Citroen SUV with his Para logo on the screen. Vic was very proud of his time in the Parachute Regiment and despite not being in the best of health for the last few years, always managed to go fishing. His funeral has already taken place and he was buried in his red beret at his request. Also, sadly, Bob Embleton died in the early hours of November 8th. Bob was a popular member who knew his stuff, fishing every week with his best friend Neil Salisbury. Bob was formerly from Wrabness but recently moved to Braintree and continued his membership, despite the journey, as he loved the club's waters so much. Our deepest sympathies are with both sets of families and friends.

As we are now into 2022, can we thank you all for your support through these extraordinary times. A "thank you" to the bailiffs for keeping you on the straight and narrow, for the strimmers and weed clearers who have turned up through wind, rain and shine to help keep the swims clean and tidy and for everyone that has helped to make this the special club that it is.

As always, enjoy your fishing, stay safe and look out for one another.

Tight Lines.

Mike Day (Hon. Secretary)

ALRESFORD PARISH COUNCIL CHAIRMAN'S REPORT

February/March 2022

General Overview:

Last year the Parish Council did all it could to continue with "business as usual" despite the Corona virus threat and it was noteworthy that even during such trying times the Neighbourhood Plan for Alresford was finalised and accepted by residents as a blueprint for the future as regards planning and improvements to the public realm.

Honours came our way earlier during the pandemic as we were presented with the Foundation Award back in September 2020. This was an award under a scheme managed on behalf of local Councils by the Improvement and Development Board (IDB). In addition, we qualified for and attained Competent Council status. Later in November 2021 further acknowledgement of the hard work of Councillors, staff, contractors and volunteers became apparent when Alresford won triple gold for its play and sporting facilities (Essex Playing Field Association) and finished runner up overall for all Essex recreation grounds in the competition (over 200 similar grounds in our class were judged). We certainly do not set out to win awards rather we try to do our very best for the village as a whole – and the awards have followed. It is important that we all remember though that there are constraints in the powers at our disposal (as we are only the first tier in Local Government) and there are many matters we would like to address that simply do not come under our remit.

So, 2022 now has challenges but we are hopeful that as a Council we can once again give appropriate service to the community. We have an outstanding membership and staff supported by village volunteers and the service given by volunteers cannot be underestimated. We also try to use local contractors whenever possible from the village or surrounding area. The Railway Station Alresford was runner-up in a national competition run by Network Rail and the Community Rail Partnership for community involvement in the railway. Alresford was acclaimed for its Bee Friendly Station gardens. In first place was a county volunteer scheme covering the whole of Lancashire.....so Alresford did very well indeed!

Changes in our Council staff took place last year and after only a few months in post it is heartening to see that our new Clerk (Responsible Officer) Mr Matt Cooke has slotted into the role with excellent commitment and ability.

There have been disappointments, it was hoped that by now the Parish Council would have taken over responsibilities for the play area, public open spaces, and the allotments at Staunton Gate but we still await finalisation of this by Taylor Wimpey, the developer. We do get complaints about litter on the development, no access to the allotments and other justified issues but until the land at Staunton Gate is signed over to the Council we are limited in what we

can do - Councillors have carried out voluntary litter-picking there.

Our work experience student, Amber, has thanked the Council for giving her the opportunity to participate in Council projects and this experience with us has helped her pass an interview to take up an apprenticeship as an Insurance Underwriter.

As regards offering support services for the young people of Alresford the Council is working in partnership with the Church and the football club to further extra-curricular provisions for young children and teenagers – they are the future and require community backing.

The Environment

The climate change crisis is concerning and locally we are playing our small part in improving the environment. Trees are being planted at various locations in the village – starting with the boundary of the playing field. Electric Vehicle charging points have been ordered for the Community Car Park under the Charge My Street scheme and re-cycling of waste products is being encouraged.

Using our new powers, the Council is removing dead elm trees from St Peter's Churchyard and has authorised re-planting. Other trees will be pruned and shaped by a local, highly experienced contractor. We often receive input from residents who note the weed growth in pavements and along roadside kerbs - at times we fund treatment of these weeds but the true responsibility for dealing with this issue is Tendring District Council working under direction from Essex Highways.

Councillors and residents have commented on the outstanding work by our P3 (Parish Paths Partnership) volunteer and "team" who deal with overgrown field footpaths. ECC Highways and landowners have responsibilities for Public Rights of Ways but at times little is done and direct local action is sometimes best.

Highways

Winter road salt has been obtained and a new salt bin has been installed at the Pointer Bus stop (not on Highways land). Another bin can be found at the Village Hall in the community car park and further bins are planned.

The Wivenhoe Road main bus stops real-time information screens (installed under a section 106 agreement with Taylor Wimpey) have met with general approval. Lighting in both bus stops is to be attended to as the solar panels have failed.

Concerns have been raised about the increase in HGV traffic, especially along Wivenhoe Road. The bulk of this increase is linked to the movement of aggregates for processing and the Parish Council is currently in discussion with Essex County Council and a local business to see what can be done to reduce the numbers of these vehicles passing through the village.

It is intended to fit a safety Vehicle Activated Sign

Continued on next page

Continued from previous page
(mobile) to cover a further section of Wivenhoe Road. A VAS has been installed on private land adjacent to the PRoW near Marsh Farm to discourage aggregate vehicle drivers from exceeding the 20 and 10mph speed limits along the quarry haul road.

Playing Field

As the population of Alresford grows it is apparent that even our excellent play and sporting facilities are coming under pressure. The Council is continuing to consult on what new facilities would benefit the community and one of the many suggestions is for a new MUGA (Multiple Use Games Area) to be installed adjacent to the existing one. An additional MUGA would give greater flexibility and allow, for example, tennis on one surface and informal or organised soccer games plus other sports on the other. It is important that the Council consults thoroughly on this as grant funding and precept money would be needed. The matter has not been voted upon by the Council so if residents have views on this possible project, then please make contact with the Clerk or myself.

Council Tax

The Parish Council part of the Council Tax (The Parish Precept) is used for such things as staff pay, grass cutting, street lighting, community facilities at the pavilion and recreation areas, PCSO deployment, litter bin installation and many other truly local needs including grant funding for local charities and community groups. The Council decides the amount that it needs to function and requests this local tax is collected (in our case) within the Council Tax. Being mindful of the immense pressures on household budgets only a 2% increase overall has been requested – even though our budget forecast has risen substantially. Councillors were aware when they prepared the budget that house building has meant the tax burden can be spread again this year so it is pleasing to note for Tax Year 2022-23 there will actually be a 4% reduction in Parish Council Tax per Band D equivalent property.

And finally:

A special thank you to everyone who volunteers in our community (that includes our unpaid Parish Councillors), we have some very caring people in Alresford and the local area. In addition to maintaining what we have there are some much needed new opportunities ahead to make further improvements. We acknowledge that we simply could not do much without the amazing support of so many volunteer residents. That concludes the first report of the new year and now we look forward to hopefully better times as the Spring approaches.



Frank Belgrove
Chairman
Alresford Parish Council

ALRESFORD PARISH COUNCIL CONTACT DETAILS

The Parish Office, The Pavilion, Ford Lane
Alresford CO7 8AT

Council meetings are held at the Pavilion on the first Wednesday of every month at 7.30pm. Public and Press are welcome
Agenda & Approved Minutes on website

Website: www.alresfordpcessex.uk/

Facebook: Alresford Parish Council (Parish Council only)/The Pavilion & Playing Field - Alresford Essex

Twitter: @alresfordessex

Chairman: Cllr Frank Belgrove - 01206 823739

Vice-Chairman: Cllr Ernie Osborne - 01206 822168

Cllr Linda Belgrove	01206 823739
Cllr Simon Clark	01206 827884
Cllr Sue Hammick	01206 618659
Cllr John Housden	07775630058
Cllr Gary Scott	01206 820769
Cllr Ann Wiggins	01206 825153
Cllr Bina Swash	01206 970353
Cllr Alistair Broom	01206 824320
Cllr Julia Claremont-Brown	- jcbapcessex.outlook.com

District Council Tendring

District Councillor Gary Scott - 01206 820769

Email: cllr.gscott@tendringdc.gov.uk

District Councillor Ann Wiggins - 01206 825153

Email: cllr.awiggins@tendringdc.gov.uk

County Council Essex

County Councillor Alan Goggin - 01206 308023

Email: egog@btinternet.com

Parish Clerk - The Proper Officer

Matt Cooke - 01206 615117 (Answerphone 24/7)

Email: alresfordpc@outlook.com

Responsible Finance Officer & Assistant Clerk

Angela Baxter - 01206 615117 (Answerphone 24/7)

Email: rfopcessex@outlook.com



FOOT CLINIC

Trish Parker MAFHP MCFHP MINA
14 Years Experience
Foot Practitioner of Year Winner 2019

CONSULTATIONS • CLINIC OPEN IN BRIGHTLINGSEA
5 DAYS A WEEK • DIABETIC PATIENTS WELCOME

PROFESSIONAL TREATMENTS COVERING ALL FOOT DISORDERS
Removal of Corns • Hard Skin • Ingrown Toe Nails
Infections • Fungal Infections • Athlete's Foot
Thickened/Deformed Nails • Verrucas
Cracked and Painful Heels • Fallen Arches

Call Trish Now To Book
An Appointment: **Prices From Only £20**

01206 307884 • 07808 938563
trish@brightlingseafootclinic.co.uk

Clinic Held at: 66 Seaview Road, Brightlingsea



Tendring Blinds & Shutters

Your Local Solution

Products

Plantation Shutters
Rollers
Verticals
Romans
Perfect Fit
Venetians
Intu
Day & Night
Pleated
Skylight
Motorisation
Curtains

Buy One,
Get One
Free

On Selected
Vertical Blinds



Call us today for your **FREE QUOTATION** Checkatrade.com
01255 474241 info@tendringblinds.co.uk www.tendringblinds.co.uk

M.D. Spackman Building Services

Brickwork~Groundwork~Extensions
Fencing~Paving~Maintenance
Certified Digger Driver / Dumper Driver

CSCS Registered

Call Mark on 07811 869316 or 01206 827995
Email: thespackmanhouse@btinternet.com

Alresford, Colchester, Essex

plumbing heating

rupert smith m.i.p.h.e

182 wivenhoe road
alresford
colchester

C.O.R.G.I reg
tel. 01206 824379
mob. 07801 365359

M. J. GREEN

TRADING AS M. J. GREEN TREWORK (WIVENHOE) LTD

Established 1977

41 VANESSA DRIVE, WIVENHOE
ESSEX CO7 9PB

TELEPHONE 01206 825503
(24 hour emergency service)

Mobile phone numbers:

07786 632002 • 07771 638064
07771 638067

- Tree felling contractor
- Surgery, coppicing
- Reshaping, reducing
- Hedge cutting, grass cutting
- Rough gardens cleaned and cleared
- Stump grinding
- Fencing supplied, erected and repaired
- All rubbish taken away
- Suppliers of firewood, logs

Free estimates and advice

Full insurance cover • N.P.T.C qualified

M.P.F Electrical
NICEIC, Approved Contractor & Domestic
Installer

Martin fuller
www.mpfelectrical.com
martyspark66@hotmail.com
Checkatrade.com
Where reputation matters

mobil 07903180828
Rolec car charger installation
Olev government grant registered.

WALKER WORKS

Garden and General Maintenance Services

Ryan Walker
01206 824080
07887 746399

ALRESFORD BIKERS – TAKING A WINTER RIDE?

First: thank you to my mystery benefactor(s), who sent me a can of WD40 for Christmas! I don't know who you are, but thank you. I think you can guess where that is going! Some of it already has! What a lovely surprise, thank you! And now, back to the plot, preventing discomfort by being prepared!

Dressing for the conditions is vital. No need for Nanook of the North, but you should be as prepared as possible. Choose the right gear. Things that come out of my dressing up box for winter include: many base layers, helmet liner/balaclava, winter neck roll, riding suit liners, leopard fur cricket box (oo-er how did that get in there?), my massive 2.4 tog winter socks, heavy waterproof gloves, maybe glove liners, fluorescent belt or reflective bib, heavy boots. Heated grips/seats get switched on. Heated clothing is available but I don't need it; you might. It depends how adventurous you are intending to be. Remember though, all that clobber may not be enough if you are stranded in a lay-by for three hours in the rain. So, if you can carry it, a small fold up umbrella is useful. Or a waterproof hat other than your skid-lid. Pocket hand warmers can be a blessing. (And, having been stranded in a lay-by for three hours in falling rain as a spotty yooof, without any of these things, I can tell you they are priceless. AB experience, see?). If it's a cold night, wear the clothes that are guaranteed to keep you warm for the duration of your ride, plus a bit. You can take stuff off; you can't put it on if you don't have it. If you're going further than the shops, it wouldn't hurt to carry a bit of energy food and drink too if you are going far enough to warrant it. You can die from exposure in two hours in UK, so think sensibly. I often go on long rides where others might question my sanity, but it's fun, and we're here but once. We're not talking Arctic expedition, but sensible stuff. You don't need to go bananas, though they are great energy, but chocolate, or (ask me the brand!) Mint Cake really give you burst energy quickly, when you need it. Popular canned energy drinks are little use. Too much volume for not much energy, and cold too. Ask me what I carry if you want a good one. Tea/coffee is always good though, because it injects lots of heat with very little volume. Carrying a mobile phone with programmed emergency numbers is obvious. Using the ICE (In Case of Emergency) system actually works – emergency people are being trained to look for it. Put your recovery agent's number in as well.

Minimising risk exposure is also key. As a biker there's huge exposure to danger in riding in Winter gloom, and you can spank me and call me Matron if it isn't so. And that is mostly down to poor visibility – both for other people to see you, and you to see them. Remember, car drivers have a difficult time especially in Winter, and a lot going against us in terms of our visibility to them. They can't see past massive door pillars or out of their frequently

steamed up windows very well in daylight let alone in the dark, and/or rain. Add to that the faint possibility that they may not be looking for bikers anyway (WHAT? Surely some mistake?) and a car full of other distractions, and there you are – invisible. (Note for any car drivers who have read this far, well done: if you don't believe that last bit, come for a ride with me and I will show you how I can make you become invisible.) Cars often have no lights on, especially at the rear. Add in to your own visibility difficulties a few surface imperfections and that surprise whole truck tyre tread in the middle of the road, (me, A1, years ago) and it's easy to imagine the potential dangers ahead. Throw in the usual cocktail of manhole covers, bumps, ridges, fast food debris, plastic bottles, tin cans, potholes and road yuk, and there you are. Obviously bonkers, but that's biking! Your job is to mitigate the risk posed by any and all of this, through preparation, awareness and using your skills to the maximum to avoid them.

"Being seen" is vital. Your bike will do a pretty good job of attracting attention through its own lighting system, (until the lamentable trend of car manufacturers for all-the-time-lights-on make us disappear in a sea of dazzle) but there's nothing stopping you from wearing a reflective (fluorescent) bib or clothing with reflective strips on, to increase your visibility, especially if you end up in a lay-by, or worse, stranded at the roadside. You can buy stick-on reflective strips, and stick them in appropriate places so that you are more obvious especially if you are exposed to this kind of danger regularly. Some can be stuck on the back of your crash helmet, the heels of boots, that sort of thing as well as on the bike itself. I am not averse to reflective togs. They work.

When it comes to seeing others, despite their own attempts at camouflage, ensure you do your bit. Simple things like making sure your visor is clean and polished so that water droplets run off, you'll be optimising your own vision. Visor demisting inserts work. By slowing your approach at junctions you'll allow yourself more time to observe your surroundings and guess the intentions of other road users, and give them time to see you. Don't hold your breath on that last one though. And time to react, should you need to.

Reading the roads can be difficult. While night riding often makes it harder to see, let alone read the roads, you're still pretty likely to find clues as to their intentions especially if you take the time to learn what all the markings and signs mean, including studs, paint, coloured cat's eyes, and all that stuff. It's not there by accident. Road markings and signage have never been so good. (Though they can improve more). The most obvious night-time guides are cat's-eyes. Where they are actually working, i.e. hardly ever in Essex but I digress, they are great. On newer stretches of road, different coloured studs indicate the presence of centre line, side-lines, exits

Continued on next page

Continued from previous page

and hazards. You will be amazed how many people don't know them. Not only will cat's eyes tell you how the road twists and turns, they'll also point out potential hazards through their spacing and colour. (Look that up in the highway code but essentially the closer together they are, and if accompanied by painted lines, the worse the hazard, so beware).

Reflective road-side marker posts also warn of hazards (even though they are actually hazards themselves but councils still insist on sticking them exactly where an unfortunate dismount will propel you!) and roads with newly-painted edges will keep you from making a bike-shaped hole in the scenery too. Isn't that reflective white paint brilliant? It's non-slip as well! Why is it not universal too? You should also be looking out for guidance from road signs, telling you what's going on, from speed limits to upcoming hazards. The more warnings you can take on board in Winter gloom the better. Handy ones include the SLOW painted on the road (which almost always means that there's been an incident there), to chevrons pointing which way the road goes. The more "events" at a given spot, the more warnings there will be. For example if there has been a collision at a junction, there may be warning triangle signs. If two collisions, there might also be a SLOW, if three or more there will almost certainly be a lamp-post. If there have been regular pile ups over time, there might well be an early warning sign, lighting, studs, paint, STOP sign, STOP line, all the works. Most drivers never even see many of these things while updating their FaceTwit, so there might be bits of headlamp and brake light glass and bumper trim from the odd Carlos Fandango Hatchback there too. They are not trained to look for warnings. It hurts us more, so we must.

Finally, there is huge of expertise available from very experienced riders, like the AB! The older and more experienced riders among us have made every possible mistake including all those above, and hopefully learned from them. Some of us have even invented new and more imaginative blunders! (I fell off in my own garage once!).

If you want to know more, talk bikes, and how to hopefully stay on them, come meet with us in the Pointer Inn, at 8pm on the second Tuesday of each month, where Neil and Sam always make us welcome. We'd love to see you.

Al Gillard

ALRESFORD NEIGHBOURHOOD POLICING November 2021

RECORDED CRIMES: 8

Crime Types: ABH - Assault without injury - Malicious communications x 3 - Criminal damage - Harassment - Domestic.

Incidents reported: 13

Types reported: Abandoned 999 x 2 - Domestic x 6 - Silent 999 x 2 - Malicious communications - Suspicious circumstances x2

TRUCAM monthly Total: 1

12/11/2021 - 1 x one hour session Wivenhoe Road 30mph - 1 captured: Top speed 36mph

Parking on Grass verges/considerate parking.

There have been Reports of Cars parking on grass verges near the school. This not only damages the turf, but causes visibility issues when trying to pull out a driveway.

Drivers mainly do this for consideration of other road users, without realising the other problems it causes. Please park on the road, this actually helps to slow down traffic.

School parking patrol

Parking patrols around the school this month, saw great improvement, with just words of advice to one person for parking on a corner. Please continue to keep the zigzags and corners clear during the specified times on the signs.

Phone scams

Scammers are constantly finding new ways to trick people and phone scams are changing all the time. If you've been the victim of a scam don't be embarrassed to report it. It can happen to anyone. If you are effected by any scams, please go to www.actionfraud.police.uk/reportingfraud for online form to report to action fraud, or by ringing **0300 123 2040** Monday to Friday 8am - 8pm. The information you give to Action Fraud can help track down the scammer.

Have you spotted a suspicious email?

If you have received an email which you're not quite sure about, forward it to the suspicious Email Reporting Service (SERS): report@phishing.gov.uk

Reporting incidents the correct way To report an incident please ring 101

Or report it online: <https://www.essex.police.uk/do-it-online/report-a-crime/>

If residents have any concern on suspicious vehicles/ activity/ drugs in the village, please feel free to contact me, with as much detail as possible, including contact details.

Email- julia.brandon@essex.pnn.police.uk

DON'T FORGET...

The Advertiser is your magazine, so please send us any contributions - both from individuals and village organisations; any feedback you have or anything you would like us to include.

If you want to know more, please contact us - details are on the back page.



OCM
Orchard Cottage Montessori
Nursery Ltd
Happiness and learning grow Together



- Outstanding nursery education for girls and boys aged 2-5 years
- Government funding accepted for 3 and 4 year-olds
- Set in beautiful, secluded grounds in the village of Alresford



For more
information
contact us
today

www.orchardcottageмонтessori.co.uk

01206 825607

Email: o.c.m@btconnect.com

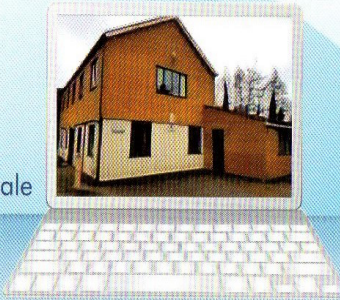
Tending Laptops

Micro Repair Centre

07305 076777

Repairs to board level

Quality refurbished laptops for sale



1 Orchard Business Units

Cockaynes Lane, Alresford, Essex, CO7 8BZ

info@microrepaircentre.co.uk

www.microrepaircentre.co.uk

ALRESFORD VILLAGE SHOP

Colchester Main Road

01206 828169

07766910713

Extended Opening Hours:

Monday - Saturday: 5.00am- 9.00pm

Sunday: 6.00am - 8.00pm

New, more variety stock available including a wide range of beers, wines, spirits, groceries, confectionery, soft drinks etc.

Hot food: sausage rolls & pasties

LOOK OUT FOR OUT SPECIAL OFFERS

MyHermes Parcel Label Printing, Send &

Return Service also Collection Point

Printing Service & Payment Facility

available in Store

Agents for Danes Launderers & Dry Cleaners

Cash Machine

Newspaper Delivery

Customer Car Park



Cleaning, Washing & Ironing

Trained
& Insured



Domestic
Commercial
One-off
New Builds

CLEAN Breeze

Professional clean,
tailored to meet your needs

Call Victoria on 07941 717372



www.simplyhaberdashery.com

Check out our vast range of products and low prices

Fabrics, quilting accessories, Braids & trimmings, buttons, Cords, Elastics, Fasteners, Sewing & mending accessories, Sewing machine accessories, Threads, Velcro, Ribbons, Zips, Tapes and much more....

**Free delivery
or shipping!!**



01206 581177

info@simplyhaberdashery.com

Paypal and all major credit & debit cards accepted

MARK BRUMPTON TREE SERVICES

TREE SURGEON

- ♣ Reshaping,
- ♣ Reducing
- ♣ Surgery Work
- ♣ and Clearance

FULL INSURANCE

For Free Estimate
and Advice

TELEPHONE:
01206 825498
or **07885749934**

Roxburgh,
Colchester Main Road
Alresford
CO7 8DG



SALES SERVICING REPAIRS HIRE
OF

GARDEN MACHINERY AND EQUIPMENT

*

HEDGE TRIMMERS – CHAINSAWS - STRIMMERS

WALK BEHIND MOWERS – LAWN SCARIFIERS

CHIPPERS – SHREDDERS – ROTAVATORS

RIDE ON MOWERS

*

UNIT 1 FRATING HALL FARM, CHURCH ROAD,

FRATING, COLCHESTER, CO7 7HD

TELEPHONE: 01206 250990/07860 411024

WEB: www.gbfarmservices.co.uk

EMAIL: gbfarmservices@btconnect.com



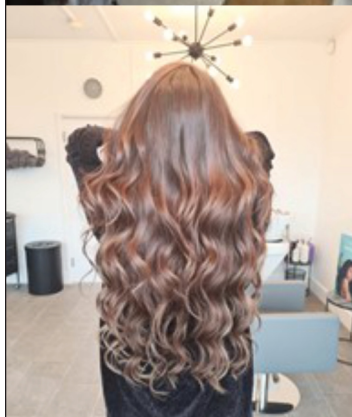
Sage Hair Studio Ltd

45 Station Road

Alresford

CO7 8BU

01206 616970



AJ HOME IMPROVEMENTS

and repairs

General Building Services

Plastering

Kitchens

Bathrooms

Carpentry

Plumbing

Electrical

Fencing, Paving & Patios

Professional - Reliable - Affordable

01206 306169 or 07766 565249

www.AJ-HOME.co.uk





DUNMOW

★★★★★
4.9 RATING ON OVER
600
REVIEWS

SKIP HIRE.
METAL RECYCLING.
GRAB HIRE.
AGGREGATES & TIPPER HIRE.
HAZARDOUS WASTE.
ROAD SWEEPER HIRE.
WASTE COLLECTION.
LIQUID WASTE DISPOSAL.

01206 307070 | DUNMOWGROUP.COM 

Carla Bryant

Nova Garden Care

GARDEN CARE AND SERVICES
GRASS CUTTING
HEDGE TRIMMING
PLANTING
WEEDING
MAINTENANCE

07890 602626
Novagardencare@hotmail.com
Facebook WhatsApp

SJ conversions

Builder

Free Estimates

EXTENSIONS
LOFT CONVERSIONS
NEW KITCHEN FITS
NEW BATHROOM FITS
GARAGE CONVERSIONS

07899045847
01206824752

stuartjohnbush@gmx.co.uk






ARE YOU INTERESTED IN
ADVERTISING IN OUR
MAGAZINE?

Please contact David at
alresfordadvertiser@gmail.co.uk

Prices start from as little as £9.50 per
edition for an 1/8th page

wjr
Mechanical Services

COMMERCIAL & DOMESTIC PLUMBING

-  Free, no obligation quote
-  Boiler renewals and servicing
-  Vaillant approved installer
-  Bathroom design & installation
-  Water main repairs/replacements

Alresford based – call Russel on
07971 519912



SIBBONS

PLANT & TOOL
HIRE

TRADE/DIY
STORE

Your local hire and trade centre!!

Family run since 1964.

Open Mon - Fri
7 - 4.30

PLANT & TOOL
REPAIR

Tel: 01206 823448
Fax: 01206 825266
sales@sibbons.co.uk
www.sibbons.co.uk



Elegant WINDOWS,
Beautiful DOORS
& Stylish CONSERVATORIES



As seen on TV



Installed according to the Tricept
Better Fitters Code Of Practice

Suppliers of TRICEPT Multipoint
Locking windows, doors and
conservatories. Fascias, soffits
and cladding also available.



Wherever you are we deliver quality

HOME IMPROVEMENTS

01206 823903

www.aandk.co.uk

5 minutes from Essex University on the Main Road in Alresford

A&K House, Main Road, Alresford, Colchester CO7 8DB

IAN LONGHURST BUILDER

Established 1982

WORKING IN WIVENHOE FOR OVER 30 YEARS!

All external work inc. Brickwork and Roofing

All internal work inc. Kitchens and Bathrooms

Free Advice and Estimates

Speak to Ian or Tina:

07484 724262

ianlonghurstbuilder@outlook.com

SMALL SCALE SKIPS



1½ & 2 YARD MINI SKIPS
COMPETITIVE RATES

WE DELIVER

SAND BALLAST STONE MOT TYPE I & II
SOIL CRUSHED CONCRETE

01206 822770 OR 07802 265712

PHONE ANYTIME

JFS

Heating, Plumbing,
Electrical and
Renewables Specialist

Friendly and Trustworthy
Local Engineer

Please Call Jack on
01206 820599
07818 034032

17 Heath Road
Alresford
Essex
CO7 8DT

Alresford Garage Ltd

A family business established since 1975

- Routine servicing
- MOT's (free retests)
- Tyres and exhausts
- Air con centre
- Loan Cars
- Servicing to cars under manufacturer's warranty



Alresford Garage

Main Road

Alresford

Colchester CO7 8DB

Reg. No. 1205244

- Diagnostics and code reading
- Easy Parking
- Free coffee
- Good Garage Scheme
- Comfortable Waiting Room

Service: 01206 825245 . Sales: 01206 822875
www.alresfordgarage.co.uk



AM GAS SERVICES

Specialist in Gas Service & Repair

**Bathroom Design
& Installation**



*Call us today
(No call out charge)*

075811 66959
01206 826122



Proud members of
Checkatrade.com
Where reputation matters



**Accredited installer &
can offer up to
12 years warranty**



GAS SERVICES

- ✓ Boiler Servicing From £40
- ✓ All Makes & Models
- ✓ Central Heating Installations
- ✓ Discount for OAP's
- ✓ LPG Qualified
- ✓ 24hr Call Out
- ✓ Alresford Based.
- ✓ Covering Colchester, Clacton & Surrounding Areas



www.amgasservices.co.uk

Eric Jordan 1925 - 2021

Sadly Eric passed away on 1 December at Oaklands Care Home in Brightlingsea, after a short illness, aged 96. He was able to live at home in Hawkins Road since Beryl passed in 2019 until August, until he had too many falls!

Beryl and Eric moved to Alresford in 1998, and since then made so many friends through various village clubs they joined, and the Church.

In 2000 they renewed their marriage vows at St Andrews, after 50 years.

After Eric retired in 1990, they decided to see some of the world, taking holidays in USA, Venezuela, and closer to home, France, Holland, Germany, Italy, Spain, Madeira, Malta and a cruise to the Baltic ending up at St Petersburg in Russia.

Previously they had travelled Britain extensively holidaying from Scotland down to Jersey and from Suffolk to the Giants Causeway in Northern Ireland.

They thoroughly enjoyed living in Alresford for the latter years of their lives.

I would like to thank all their friends and relatives for all the kind messages I have received.

Barry Jordan



ALRESFORD FETE ORGANISING GROUP (AFOG)

It was a huge blessing that the Over 75's Christmas Tea Party was able to be held this Christmas after having to cancel the 2020 party due to Covid restrictions.

The party for over 70 guests was on Wednesday 15th December and took place in the wonderfully decorated Village Hall. To be Covid safe those who attended were seated in groups of six and table service from 'face covered' volunteers ensured that all had an individual Christmas tea.

In previous years the children from Alresford Primary School have visited and entertained all with Christmas Carols, but again due to Covid this could not happen and they were certainly missed by all.



The party goers enjoyed carols and delayed VE Day songs in karaoke style reading from the hall screen. Most importantly all could meet and, in some cases, say hello to others they had not seen for nearly 2 years.

We miss those who could not make it or sadly have passed away since our last party, but we remember them all with a smile.

Thank you to the wonderful volunteers who made this happen, it could not happen without you.

Russell
Chair AFOG

ALRESFORD ADVERTISER CONTACT DETAILS

EMAIL: alresfordadvertiser@gmail.com **TELEPHONE:** 01206 825739 **ADDRESS:** 22 Station Road, Alresford, CO7 8BT

ARE YOU INTERESTED IN ADVERTISING?

For enquiries about advertising your company or organisation, please contact us via the email address above

CORRESPONDENCE

Any correspondence for publication must be accompanied with your name and address or that of your organisation.

DISCLAIMER

Submission of material does not always guarantee inclusion within the publication, and advertisements and editorials are published in good faith. The editor cannot be held responsible for the accuracy of any advertisements placed by advertisers. Editorial material does not necessarily reflect the views and opinions of the editors and neither editorial nor advertisements are to be read as recommendations on the part of the editor

COPY DEADLINE

The editorial and advertising deadline
for the next edition will be:
8th MARCH 2022