

THE ALRESFORD ADVERTISER APRIL/MAY 2022

Established 1970


Wish Upon a Fairy

Raffle
Cakes
Tombola & more!

Please join us for our first
QUIZ NIGHT
£5 per person
Minimum 4 players per team - Maximum 6 players per team
Prize for winning team & best team name

23rd April 2022
Arrival at 7pm
7:30 start

Alresford Village Hall Ford Lane, Alresford, Colchester CO7 8AT

To register your team please email:
wuafcolchester@gmail.com
Please email as soon as possible to reserve place

Bring your own food and drinks

All funds raised for Colchester Neonatal unit
www.wishuponafairycolchester.co.uk

Celebrate The Platinum Jubilee of Queen Elizabeth II



**Alresford Fete
Organising Group**

**Invites you to a Fish
and Chip lunch at
Alresford Village Hall**

Thursday June 2nd @ 1pm


This event is open to those in Alresford who are 75 years of age or over and their respective 'better halves' on a first come first serve basis.

This is a free event so please book your place as soon as possible by calling:

Jeanette on 01206 825008 or
Russell on 01206 825739


PLATINUM PARTY IN THE PARK
at Alresford Playing Field
Saturday 4th June 2022
12pm - 4pm
Please see the back page for further details

ALRESFORD WI FASHION SHOW
Friday 17th June 2022
Please see back page for details


Alresford Gardening Club
A presentation by Simon White from
Peter Beales Roses
Entitled:
A to Z of Roses
Alresford Village Hall
Ford Lane, Alresford CO7 8AT
Monday 4th April at 7.30pm
Non-members & visitors welcome £2.50

Over 1200 copies delivered to every household & business in Alresford

Also available online via the Parish Council & Village Hall websites: www.alresfordpcsex.uk & <https://e-voice.org.uk/alresfordvillagehall/>



St Andrew's Church



Find us on fb: ParishChurchesofAlresfordElmsteadThorrington-TenpennyVillages
Information about our Services can be found on our notice sheet at <http://tenpennyvillages.uk>

www.tenpennyvillages.uk

UP AND COMING SERVICES

Mother's Day Sunday 27 March

11.00am All Age Service (including a small bunch of flowers for to celebrate mums.)

Palm Sunday 10 April

Check the Tenpenny Villages Benefice website www.tenpennyvillages.uk or Facebook page <https://www.facebook.com/TenpennyChurches> for details of a something quite different!

Good Friday

10.00am at St Anne & St Laurence Church Elmstead – Good Friday Workshop – Easter crafts for children

2.00pm at St Mary's Church Thorrington – A quite reflective service meditating on the events of Good Friday

4.00pm at St Andrew's Church Alresford – Lego Workshop for Easter

Easter Sunday @ St Andrew's

5.45am Easter Sunrise Communion Service

11.00am Easter Celebration Family Communion (including an Easter Egg Hunt)

ST ANDREW'S REFLECTIONS

Thoughts on Life and Faith April 2022

I am writing this on day 11 of the invasion of Ukraine. It is also the first Sunday of Lent. By the time you read this, things will be very different in Ukraine. It is possible that the whole of Europe and the wider world could be very different.

As you read this we will also be coming to the end of Lent and entering into Holy Week. This is when, in our churches we walk with Jesus through the events of the last week of his life. When we prepare to witness again his betrayal and crucifixion, and then experience again the joy of his resurrection.

I've been pondering the parallels between these two things that are going on.

We are 2,000 years after the events in Jerusalem where a 30-year-old man was crucified for upsetting the religious and political authorities. He disturbed the veneer of peace that was operating across the Roman empire and in Palestine at that time. And today, again, we are witnessing how, despite

efforts since the 2nd World War to build structures that tied us together economically, socially and culturally the veneer of civilisation is easily broken. It breaks under the weight of fear, greed, and hypocrisy.

Jesus saw what was going to happen to him. He saw how the Roman leadership was worried that a restless people could rise up against them. He saw how the local leaders, especially the religious authorities were frightened. Frightened for themselves and their own power base. But also frightened about the impact that a breakdown of the fragile stability, all be it a stability underpinned by fear and corruption, could have on the population, especially if the might of Rome was brought into quell it. Jesus knew that his loving and gentle opposition to the powers of fear, greed and hypocrisy would bring about his own torture and death. He told his disciples but they couldn't see the bigger picture, they could not understand where things might be going. Even in in those final days of Jesus' life, and even after his resurrection they didn't understand. It took them and those that came after them weeks, months, decades, even centuries to get glimpses of who and what Jesus was as and what he was about. And we still grapple with it today.

All sides of the conflict currently going on are coming from what we like to think of as a Christian culture that has been prevalent in Europe for centuries. But we still, all of us, even those in our churches, fail to grasp who and what Jesus was and fail to follow him, fail to base our lives on him. Basing our lives on Jesus' life includes, but is more than giving things to help out those in Ukraine or those in need closer to home. It also involves looking at the fear, pain, anger, hatred, hypocrisy in our own heart. And none of us are immune. I know I'm not. But I do know that in trying to follow Jesus I do get closer to letting go of the things that stop me living as generously and fearlessly as he did and loving as he loved and loves. Following him, seeking to meet him in prayer and in others means that I do get a bit closer to being like him. And I am grateful for that.

I, we, those in our churches would love it if more people wanted to join us more personally on this journey of prayer and service in the footsteps of Jesus. Please look out for details of our church services and also opportunities to learn more about prayer and living like Jesus.

Rev Pauline Hart

**Associate Priest for the Tenpenny Villages
St Andrew's Alresford, St Anne and St Laurence, Elmstead
& St Mary Magdalen, Frating with Thorrington**

ST ANDREW'S CHURCH CONTACTS

Rector: Rev Andrew Fordyce - 01206 920848
Email: rector@tenpennyvillages.uk

Curate: Rev Tim Solosy
Email: revtsolosy@gmail.com

Associated Priest: Rev Pauline Hart - 01206 826318
Email: assocpriest@tenpennyvillages.uk

Churchwarden: Wendy Wilson - 01206 825040
Email: stachurchwardens@tenpennyvillages.uk

Bookings for the Hub: Meg Burdus - 01206 820618

ALRESFORD STATION HOUSE

Good news, in that ASH has secured funding with the Co-op Booster program to write and launch the shares prospectus. This is a huge boost to the project and will lead on to the Co-op match funding each share sold. A big thank you to those that have already pledged to buy community shares via our website and for those wanting to pledge please go to our website alresfordstationhouse.org.uk/get-involved, and follow the link to do so.

Thank you to all those who have put the hard work in so far with funding applications, business plan writing and to everyone who organised the pop up coffee events and helped out and to those that came to support them. So many people have expressed an interest in being involved with the project and as the project progresses your help will be crucial, but at this point we really need some help and input from residents that have more specific skills to



get through this difficult stage of buying and organising renovation, and starting up the community business. Just a little bit of time and skills are needed at the beginning to ensure success, so if you do have business, financial, website, or design skills and experience please visit our website or email info@alresfordstationhouse.org.uk to help us make this project a reality. Also to sign up to our newsletter to stay informed.

Help us create something exciting for everyone.

ALRESFORD CRAFT & FARMERS MARKET

Alresford Village Hall
Ford Lane CO7 8AT

2nd April 2022
7th May 2022

9am - 12 noon

A variety of food and craft stalls
Free Admission
Free car park and disabled facilities

COVID guidelines will be in place and of course this may prevent the market being held. Unless exempt, we politely ask that face coverings are worn when walking around the market.

For updated information, please check the Alresford Craft & Farmers Market Facebook page

FOOT CLINIC

Trish Parker MAFHP MCFHP MINA • 17 Years Experience

Foot Practitioner of Year Winner 2019

CONSULTATIONS • CLINIC OPEN IN BRIGHTLINGSEA
5 DAYS A WEEK • DIABETIC PATIENTS WELCOME

PROFESSIONAL TREATMENTS COVERING ALL FOOT DISORDERS
Removal of Corns • Hard Skin • Ingrown Toenails • Infections
Fungal Infections • Athlete's Foot • Thickened/Deformed Nails
Verruca's • Cracked and Painful Heels • Fallen Arches



Call Trish Now To Book
An Appointment

Prices From Only £20

01206 307884 • 07808 938563

Clinic Held at: 66 Seaview Road, Brightlingsea

Direct Animal Feeds

01206 827035

The complete range of animal feeds, bedding and accessories for

Horses • Dogs • Cats • Small Pets • Poultry

Opening:

Mon - Fri: 9am - 5pm
Sat: 9am - 4pm

Local delivery available

Email: directanimalfeeds6@gmail.com

Maggie: 07885082281

Unit 3, Heath Farm
Cockaynes Lane
Alresford
CO7 8DA



ALRESFORD VILLAGE HALL
Charity Commission Number: 301233

The Village Hall website:

<https://e-voice.org.uk/alresfordvillagehall/>

The Village Hall Facebook:

<https://www.facebook.com/Alresfordvillagehall/>



Since the last report we have now managed to get back to a normal way of use regarding hire of the hall and Covid. As with Government guidance it is now very much the responsibility of the user to manage the risk of Covid, however there are still sanitisers available, and ventilation is still recommended whilst using the hall.

We are back to full usage during all weekday sessions except for a Friday evening, although there are even occasional hires such as quiz nights etc on that evening. Weekend and private hires such as parties or dances are extremely healthy.

The online banking process is progressing with the hope to transfer our normal operating procedure to this system in the coming months. As reported last time, all regular groups/hirers will now be invoiced quarterly as from April. Thank you to for their assistance in this change.

The Trustees are returning to the normal fees for hire on regular groups for the next 3 months, this will then be again reviewed considering the effects of the Brexit, Pandemic, and the ongoing crisis in Ukraine on the economy and crucially the cost of energy. It is hoped that there will also be some financial assistance from Tendring District Council that will allow us to assist groups with regards to cost of hire.

Over the last 15 years over £200K has been spent on improving our hall and this has achievable not least because of the excellent help and advice we have received from the RCCE Village Hall's Advisor Sue Gibson. Sue is retiring at the end of March and as much as we will miss her, we wish her all the absolute best in her retirement.

The external Notice Board has received damage and will be replaced with a more robust model hopefully with LED lighting. Also, a new floor cleaner will be purchased to allow the cleaner to wash the polished floor more frequently. The regular floor service will be scheduled for August.

The AGM will be held later in the summer and will be advertised.

HALL/PAVILION HIRE

The Pavilion/Bar is now available to hire for either individually or as well as the Hall. All enquiries should be via the Village Hall booking clerk, Pat Burmby on 01206 823983 or via email at enquiries@alresfordvillagehall.co.uk

Thank you
Russell Milburn, Chair AVHMC

COCKAYNES NATURE RESERVE NEWS

It's been a busy few weeks over on the reserve for our volunteers. We've been pleased to see so many come along to help out and it's been great to see so many new faces alongside the return of many friends who have been out of action during the lockdowns. It's enabled us to make great progress on getting the site management plan back on track after our enforced break.

We've been continuing the work around the footpaths in Cockaynes Wood. If you've walked in the wood recently you may have noticed two new stretches of dead hedging made from Holly. While we don't want to remove the Holly entirely, we do have to manage the extensive growth within the wood so that we don't lose other species. Using dead hedging has many benefits, it acts as a barrier to help designate the path and allow the ground flora (plants and flowers) to regrow and also provides a habitat for small mammals and insects. In a few weeks the woods will both be full of bluebells and there's plenty of signs of them coming through already although there have been some sections that won't flower this year due to damage caused by the widening of footpaths due to the larger number of visitors last summer during lockdown.



We've had two sessions of tree planting this winter with 100 Hazel trees planted into Cockaynes Wood and 100 trees from the Woodland Trust in a fruiting hedge mix. This hedge mix has been around the meadow with the bulk of them replacing the hedgeline that was burned by a picnic fire.

Sightings recently include a pair of small Grebes aka Dabchicks on the scrape pond, coots, tufted ducks and the return of the Water Rail. Exciting news too that we had report of a Bittern for the first time on site.

Upcoming dates for your diary:

Work Party - Sunday 3rd April, Sunday 1st May

Moth Night - Friday 13th May

Bioblitz Weekend 14th - 15th May

For more information, please contact the warden Roger on 07710 960376, or via our Facebook page: Cockaynes

CLUBS AND SOCIETIES NEWS

Do you run a club or society? If you would like something included in the Alresford Advertiser, please email alresfordadvertiser@gmail.com

ALRESFORD GARDENING CLUB

Our first meeting on March 7th was the AGM when 26 members attended. It was very pleasing to have 3 new members join the club. As part of the AGM, the programme of varied and interesting talks planned for this years season was explained in more detail, some speakers returning to give talks on other aspects of their work, and for others, a first visit to Alresford. Following refreshments, a light hearted fun quiz based on TV Gardening presenters and anagrams of well know garden flowers was held which was very much enjoyed by those attending. New members are always welcome.

2022 Season Events

April 4th

A - Z of Roses by Simon White from Peter Beales Roses

May 23rd:

Tour of Beth Chatto Gardens (members only) - 5.30pm

June 6th

Willow Weaving - Debbie Hart

July 4th

Archaeological Digs - Adam Wightman

August 3rd or 4th (tbc)

Hyde Hall Summer Flower Show (members only)

September 5th

Plant Propagation - Marc McHearne from Beth Chatto's

October 3rd

Brussel Sprouts to Tangerines - Jacqueline Aviolet

November 11th

Quiz Night

All meetings within the Village Hall commence at 7.30pm
For more details about the Gardening Club please contact
Chris Sanderson (Chairman) on 07484 334698

ALRESFORD WI

Alresford WI meet on the second Thursday of each month in the Village Hall. Meetings start at 7.30pm.

Our next two meetings are the 14th April and the 12th May. On Friday 17th June, we will be hosting a Fashion show - further details about this are on the back page.

In April, we will be welcoming a Specialist Nurse who will talk about the signs and symptoms of heart attacks in ladies which is far more common than most people realise.

New members would be very welcome - come and attend a meeting to see if you enjoy it before joining. Admission for non-members is £3.00 which includes refreshments.

For further information please contact:

Chris James, 01255 764769 or
Hilda Newbold 01206 823477

SIMPLY SINGING

Session Dates

1st & 29th April 2022

6th & 20th May 2022



The Simply Singing Group is not a choir or professional singers, but just people who love to come together and enjoy a good old sing a long of their favourite songs.

Sessions are from 2 - 4pm and cost £2.00 including teas and coffees

In view of possible ongoing COVID restrictions/regulations, anyone wishing to attend a Simply Singing afternoon is recommended to call either Jeanette on 01206 825008 or Chris on 01206 823824 to check if it is still able to go ahead.

For more further details about the group, please contact:
Jeanette: 01206 825008 or Chris: 01206 823824

Dates for June and July will be published in the next edition of the Advertiser.

ALRESFORD CAMERA CLUB

The ongoing Covid situation has unfortunately meant we've had to cancel two club evenings, and hence some subsequent re scheduling of our programme has been necessary. Existing members are being advised of any changes via email, but if you are a non-member and interested in coming along, please contact our Club Chairman, John Merison on 01206 250846 for the latest information.

The club has its own website at www.alresfordcameraclub.org.uk where details of the programme can be found. Every attempt will be made to keep this up to date, but to be certain please contact John as above.

ALRESFORD ART GROUP

We meet on Wednesday afternoons from 1pm through to 4pm on the following dates:

2022

6th April

4th May

In view of ongoing Covid regulations, anyone new and possibly interested in coming along are recommended to call me prior to check the meeting is still going ahead

Please contact Chris Sanderson for more details in the meantime on 07484 334698

THE AUTUMN CENTRE LUNCH CLUB

TUESDAYS at ALRESFORD VILLAGE HALL:
12.30 - 2.30pm

FRIDAYS at BRIGHTLINGSEA COMMUNITY CENTRE:
12.30 - 2.30pm

2 Course Meal including Tea and Coffee - £8.00
Transport, door to door, if needed - £4.00
Raffle - £1.00

We welcome back all past members and newcomers. It is not too late to join us for these friendly meals. Any further enquiries, please phone 01206 303702

ALRESFORD VILLAGE HALL REGULAR GROUPS

Below are the regular hire groups currently involved using the hall facilities in normal times:

- Mindfulness Yoga meet Monday mornings
- Alresford Indoor Carpet Bowls Club meet Monday afternoon/Evening.
- Alresford Gardening Club (affiliated to the RHS as Alresford Horticultural Society) meet on the first Monday of the Month, March to November
- Alresford Lunch Club meet every Tuesday morning and early afternoon
- 1st Alresford Scout Group (Beavers) meet Tuesday Teatime.
- Dog Training Classes Tuesday and Thursday evening.
- Tai Chi meet every Wednesday morning.
- Alresford Art Club meet every other Wednesday afternoon.
- Alresford Women's Guild meet every other Wednesday afternoon.
- Yoga meet every Wednesday evening
- Exercise Classes (Extend) meet every Thursday morning.
- Young People's Dance School meet every Thursday afternoon
- Alresford Women's Institute meet the second Thursday evening of the month
- Alresford Camera Club meet the first and third Thursday evening on the month
- Alresford Calligraphy Group meet every Friday morning.
- Simply Singing meet every other Friday afternoon
- Alresford Craft and Farmers Market on the first Saturday morning of the month (February to December)
- Alresford Colne Rangers Football Club (using the Pavilion at the rear of the hall)

If more information is needed for any of these groups, please visit the Village Hall website or contact Russell Milburn on 01206 825739

ALRESFORD BOWLS CLUB

This Spring quarter has been a busy one with increased interest and new members joining our social/competitive bowling group. We have also commenced playing "Friendlies" (matches) with other Clubs in our local area, non-league, but still competitive and enjoyable by all accounts.

As you may know we meet on most Mondays (excluding Bank Holidays) between 2-4pm and 7-9pm at Alresford Village Hall. Membership is rapidly reaching capacity but please do pop in and see what "Carpet Bowls" is all about (NOT to be confused with "Short Mat Bowls" by the way). Currently fees are £10 annual membership & £2 per session. Tea/coffee & biscuits served at 3pm.

We are thrilled at last to be able to confirm our plans for the club's 30th anniversary celebrations. On Monday 11th July we will be hosting an afternoon tea from 3.00 pm to 5.00pm in the Village Hall. This will have to be a ticketed event due to catering needs. It is open to all Playing members and Life Members. As I am sure you appreciate it is important to get your ticket either from myself or call in on Monday afternoons or evenings and take it from there. Look out for the posters in the Hall and elsewhere.

DO COME AND JOIN US in our landmark anniversary celebrations."

An informative article in Dec/Jan issue of this magazine will fill you in on the Club's history but safe to say local people have been the backbone of the club and it continues to thrive to this day thanks to them all. To name a few; Roy Taylor, Ray Milburn, Ron Webb, Maureen Baillie and Bill Norman, and of course your current committee who work hard to keep everything going smoothly.

Jenny Holben, Chairperson A.B.C.

Tel: 01206-827756; M: 07714 875001,

Email: jaholben@btinternet.com

ALRESFORD BOWLS CLUB

**You are invited to join us to
play carpet bowls**

**SESSIONS ARE HELD EVERY MONDAY
2.00PM AND 7.00PM
ALRESFORD VILLAGE HALL
JUST COME ALONG**

**FREE TRIAL SESSIONS ARE AVAILABLE TO
NEWCOMERS**

**THEREAFTER THERE IS A £10 ANNUAL FEE AND
£2 PER SESSION WHICH INCLUDES
REFRESHMENTS**

For further information contact

Jenny Holben on
01206 827756 or 07714 875001





**ALRESFORD POST OFFICE
& CONVENIENCE STORE**
55 Station Road, Alresford
Essex, CO7 8BX

Opening Times:
Monday - Saturday 8am - 7pm
Sunday 8am - 4pm

Visit us for:

FREE BANKING SERVICES

On cash withdrawals, cash and cheques deposits
for the following Banks:

Barclays, Halifax, HSBC, First Direct, M & S Bank, Lloyds,
Nationwide, NatWest, Smile, Santander, The Co-op Bank,
TSB, Royal Bank of Scotland, Cahoot, Bank of Ireland,
Clydesdale Bank, Yorkshire Bank, CAF Bank

Wide range of everyday groceries - Greetings cards
Newspapers & magazines - Beers, wines & spirits
Cigarettes & tobacco

Dry cleaning services - Animal & pet feed - Stationery

**DON'T FORGET....Your local Post Office offers
many other services including:**

- 'One4all' multi-store gift cards for all occasions
- Car Tax using your V11 reminder form or
V5 Registration Document only
- Euro's on demand, other foreign currency
& Travel Insurance
- Passport check & service
- Car/Home/Pet Insurance
- Bill Payments: Gas/Electricity/BT Paypoint Outlet



Play Paws Emporium

Natural dog treats

Enrichment Toys
and Accessories

Online AND
In-store shopping



@PEmpawrium

@playpawsempawrium

Play Paws Emporium

12b Orchard Business Units
Cockaynes Lane
Alresford Essex CO7 8BZ

07585 440815

sam@playpawsempawrium.co.uk
www.playpawsempawrium.co.uk

A J R

Boiler Breakdown &
Service Engineer
General Plumbing



629704

Tel: 07887683335

Email: tonyrook6919@gmail.com

COLNE VIEW DENTAL SURGERY LTD
53 Ladysmith Avenue, Brightlingsea
Essex CO7 0JD

01206 302307

Piers Lambert Bchd (Leeds 1992)

MODERN FRIENDLY FAMILY PRACTICE
FREE ON-SITE PARKING

WHEELCHAIR ACCESS AND DISABLED FACILITIES
ONLY WHITE NON MERCURY FILLINGS
CEREC 1 VISIT CROWNS NOW AVAILABLE
COSMETIC WORK - TOOTH WHITENING
NO REGISTRATION NECESSARY
EMERGENCIES WELCOME
VISIT OUR WEBSITE AT - www.colnedental.co.uk
Major card payments accepted

**I. BLANCHETTE
PLUMBING AND HEATING**

Bathroom Installations
Ceramic Tiling
All Domestic Plumbing
Central Heating Systems
Boiler Upgrades
Boiler Maintenance Repairs
Power Flushing
Under Floor Heating
Pressurised Water Systems

Established 30 years
Reliable and Friendly Service

Tel: 01206 827464

Mobile: 07967 533 314

GASsafe reg no: 64249

ian.blanchette@talk21.com

Alresford Angling Association

Est . 1968

Time is passing by and we are already into our second edition of our newsletter, with Spring just around the corner and the prospect of warm days sat by a waters edge starting to be a reality. The chance to use new items of tackle plus gadgets is also at the forefront. If you are putting new line to your reels, please dispose of your old line responsibly. Please check with your tackle shop to see if they have a line disposal service, as redundant line can now be recycled and made into new line. Please follow the "5 rule" and either take 5 minutes to check your swim for litter or pick up 5 items of litter on your way back home (or both).

All current members should by now have received a letter asking for your vote regarding the future of the Grinsted Orchard Lakes. A further update will be posted to you all prior to the season end with how we proceed, along with the date of the AGM. As was pointed out in the letter, you must now be aware that the Committee does need a majority vote to allow us to proceed with future plans for our fishing here in Alresford. As was pointed out, a no reply means a "no" vote.

If you have any questions, please contact the committee through the web-site @ alresfordangling.co.uk. Can I remind all members that the club has no affinity with the Facebook page headed Alresford Angling Association and does not reflect the comments posted on there.

Work parties have carried on through the winter months, with the Abbey Lake having had a major overhaul. Bramley Lake has had the island cleared of overhanging vegetation and Worcester is now the next target to clear unwanted Bramble, Gorse and other encroaching shrubs. Any member who can spare a few hours to assist with the preparation for the oncoming season will be welcomed and asked to do no more than they are capable of. Wednesday mornings at Grinsted Orchard Lake and Thursday mornings at Alex Bareham Lake.

The variety of bird life visiting the lakes is on the increase, with Gadwall and Shoveller Ducks making an appearance. The ice-free conditions have made life for the diving birds considerably easier with Kingfishers and Grebes managing to keep themselves fed so far. It is always nice to see the sudden flash of blue and orange whizz across the water and the mating rituals of Grebes are always entertaining.

Matches have carried on through the winter months and we are close to the last of the season's events. Wind, rain and sometimes the fish have not always been kind, but determination has prevailed. Well done to all the hardy souls that continued to arrive at the waters edge full of expectation.

One of the issues to come out of the Covid lockdown is that the Government and the Health sector have recognised the benefit of angling to people's mental health and wellbeing. This was one of the reasons why club-controlled fishing was allowed to continue all be it under various controls and has resulted in a massive upswing in the participation of the sport. Angling as become an alternative form of treatment now prescribed by the NHS!

To any new residents to Alresford, if you are interested in fishing, please don't hesitate to contact us. We are a friendly club and would welcome your presence at the water's edge. We offer membership to the under 12's for free and that could be the start of a lifelong passion. It's where we all started.

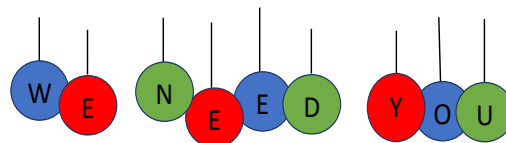
As always, enjoy your fishing, stay safe and look out for one another.

Tight Lines.
Mike Day (Hon. Secretary)



Just ONE HOUR

Are you looking for a New Year's resolution that benefits you *and* someone else?



Could you give ONE HOUR of your time, once a week to befriend someone who is feeling lonely or isolated?

A weekly call or visit from a befriending volunteer can really brighten someone's day

That volunteer could be YOU 😊

For more details contact: befriending@ageconcerncolchester.org.uk
All volunteers are required to undertake a DBS check and provide references
Registered Charity Number 1142414 Registered Company Number 7517777

MOBILE LIBRARY Alresford Village Hall

**The Mobile Library visits every:
3 weeks**

**Day of visit:
Thursday**



**Time of Visit:
11.55am to 12.25pm**



**Next visit dates:
21st April 2022
12th May 2022
2nd June 2022**

ALRESFORD PARISH COUNCIL

CHAIRMAN'S REPORT

April/May 2022

Ukraine:

Alresford Parish Council held a one minutes silence at the March Parish Council meeting to display solidarity with the extraordinary citizens of Ukraine. The effects of the war will be felt for generations to come and the refugee situation is appalling. Some Alresford residents have sent supplies overland to countries dealing with the immediate refugee crisis and that is to be commended. Alresford Parish Council will be donating to the Disaster Emergency Committee of the British Red Cross.

General Overview

Springtime is a very welcome season although the winter months have been mild and this has enabled the Council to oversee a number of outdoor tasks on the playing field and at St Peter's Churchyard. Storms Dudley, Eunice and Franklin though, left their mark on Alresford back in February, and damage was done to fences, trees and road signs. Sadly the iconic sand barge jetty in Alresford Creek was badly damaged and as this is a non-designated heritage asset inquiries are being made as to whether restoration works can be carried out. The Council is very grateful to volunteers and our own contractors for the swift response to clear up debris from roads and pavements.

Playing Field

Following a comprehensive inspection of the play equipment and playing field, by our safety inspector there were some maintenance tasks that we were advised to undertake and although nothing of urgency was picked up on the Council voted to spend money now rather than wait for prices of repairs to rise. So, new safety matting was fitted where required, welding of the supports for a steel multi-play slide was carried out and tennis net post sockets were replaced on the hard court. Further works are planned to the skate park and swings. As mentioned in the last AA report new items of play equipment and facilities are being considered to increase choice and capacity for the ever growing population in Alresford.

Highways

A virtual standstill on the progress of our two main campaigns for highway safety has occurred as we await the Essex County Council review into speed management, due out shortly. The Parish Council is seeking an appropriate speed limit for the B1027 through Alresford and for Cockaynes Lane. The five hundred plus signatures on the petition handed to the Council are certainly not being ignored! At the February meeting of the Council senior representatives of Brett Aggregates attended to be questioned regarding the large number of HGVs transporting newly quarried material from Lufkins Farm near Great Bentley to Alresford for processing. It is hoped progress can be made on reducing the number of vehicles - by the firm carrying out the majority of processing on-site at Lufkins Farm. Two Parish Councillors attended an Essex County Council Minerals and Waste Planning Committee meeting in Chelmsford to further make representation of our concerns. Our kerb improvement project has been delayed due to unforeseen circumstances with our contractor, but we are assured the work will be

done. Wildlife crossing rural roads is always an issue and creatures such as deer and wildfowl are often struck – although warning signs can alert drivers to the dangers it really is a case of driving with care at all times and of course accepting that wild creatures will do the unexpected and can suddenly appear from a hedgerow on any stretch of our country roads. Parking during term time outside the school is causing problems in Ford Lane and Church Road, some drivers are even parking on pavements and on the junction. To really help the parking situation and the dangers poorly parked vehicles pose many parents park at the village hall car park and walk their children to and from school - this is to be commended. Grant Funding of £3000 has been obtained via the Essex County Council Locality Fund for a mobile Vehicle Activated Sign – to help combat speeding.

The Environment

Trees have been planted on the Playing Field boundary and as requested by residents a number of fruit bearing trees have been included. At St Peter's Churchyard major tree surgery has now been carried out including the shaping of several Yew trees. The feedback from residents has been very pleasing to note as so many in Alresford care for the natural environment. Sadly, littering is still a major issue and we have also noticed that some are misusing the village litter bins by using them for household items and even waste engine oil. A call has to go out for one or two more gardening volunteers to tend to some of the flowers and shrubs in key areas of the village, for example, the rose garden on the corner of Wivenhoe Road and the B1027 is an area where extra assistance may be required. Training can be given by experienced gardeners to those that would like to help.

Neighbourhood Plan

As the Plan is now approved it makes sense to start not only applying the Plan's policies but also to carry out projects gleaned from the Parish surveys and mentioned in the Plan. One important project is to improve the public realm or in other words to enhance the landscaping of the village infrastructure. These improvements will need careful planning so that ongoing maintenance costs are kept to a minimum. Firms are being consulted that offer design packages so that funding streams can be accessed as often professionally designed schemes influence the main grant funders.

The Tendring Colchester Borders Garden Community project

This is a joint project between Tendring District Council, Colchester Borough Council and Essex County Council. As many will know it is a planned new community on a swathe of land that covers an area from Greenstead up to the vicinity of Elmstead Market. The housing development will include the new link road between the A120 and A133. It is vital that Alresford has input into the project now that it is in the consultation phase with three to four final planning proposals on offer.

The project website is talk.tcbgardencommunity.co.uk

And finally: The Parish Council is so grateful for the support that it receives from across the whole community. We do our very best to maintain and improve areas of the village we have responsibility for.....plus we also strive to encourage

continued on next page

the District and County Council to provide the services we all need. If anyone requires information regarding the role of the Parish Council please contact myself, another Councillor or the Clerk....we are here to serve the whole community.



Frank Belgrove
Chairman
Alresford Parish Council

ALRESFORD PARISH COUNCIL CONTACT DETAILS

The Parish Office, The Pavilion, Ford Lane
Alresford CO7 8AT

Council meetings are held at the Pavilion on the first Wednesday of every month at 7.30pm. Public and Press are welcome

Agenda & Approved Minutes on website

Website: www.alresfordpcessex.uk/

Facebook: Alresford Parish Council (Parish Council only)/The Pavilion & Playing Field - Alresford Essex

Twitter: @alresfordessex

Chairman: Cllr Frank Belgrove - 01206 823739

Vice-Chairman: Cllr Ernie Osborne - 01206 822168

Cllr Linda Belgrove	01206 823739
Cllr Simon Clark	01206 827884
Cllr Sue Hammick	01206 618659
Cllr John Housden	07775630058
Cllr Gary Scott	01206 820769
Cllr Ann Wiggins	01206 825153
Cllr Bina Swash	01206 970353
Cllr Alistair Broom	01206 824320
Cllr Julia Claremont-Brown	- jcbapcessex.outlook.com

District Council Tending

District Councillor Gary Scott - 01206 820769

Email: cldr.gscott@tendingdc.gov.uk

District Councillor Ann Wiggins - 01206 825153

Email: cldr.awiggins@tendingdc.gov.uk

County Council Essex

County Councillor Alan Goggin - 01206 308023

Email: egog@btinternet.com

Parish Clerk - The Proper Officer

Matt Cooke - 01206 615117 (Answerphone 24/7)

Email: alresfordpc@outlook.com

Responsible Finance Officer & Assistant Clerk

Angela Baxter - 01206 615117 (Answerphone 24/7)

Email: rfopcessex@outlook.com

THORRINGTON BOWLS CLUB

OPENING FOR THE SUMMER SEASON



SATURDAY 23rd APRIL

1.45pm for 2pm start

New Members are very welcome

If you would like to 'have a go' why not join us!

No charge for first visit plus tea and biscuits and a raffle.

Simply wear flat shoes, we have plenty of woods you can borrow!

The green is next to Thorrington Village Hall – just turn up or contact:

Rita on 01206 250805;

Les on 01206 305658;

Pat on 01206 251813 or

Sandy on 01206 251822



ALRESFORD FISH BAR

51 Station Road, Alresford CO7 8BU

We offer delicious food at competitive prices

Fish and Chips, Kebabs, Burgers, Falafel, Wraps plus lots more

See our full menu at

<https://alresfordfishbar.com/>

Order online or telephone 01206 616360

Delivery available within a 5 mile radius

**Please note:
There is a minimum order of £15.00 plus £2.00 delivery**

Download our App



Verified by



Tendring Blinds & Shutters

Your Local Solution

Products

Plantation Shutters
Rollers
Verticals
Romans
Perfect Fit
Venetians
Intu
Day & Night
Pleated
Skylight
Motorisation
Curtains

*Buy One,
Get One
Free*

On Selected
Vertical Blinds



Call us today for your **FREE QUOTATION** Checkatrade.com
01255 474241 info@tendringblinds.co.uk www.tendringblinds.co.uk

M.D. Spackman Building Services

Brickwork~Groundwork~Extensions
Fencing~Paving~Maintenance
Certified Digger Driver / Dumper Driver

CSCS Registered

Call Mark on 07811 869316 or 01206 827995
Email: thespackmanhouse@btinternet.com

Alresford, Colchester, Essex

plumbing heating

rupert smith m.i.p.h.e

182 wivenhoe road
alresford
colchester

C.O.R.G.I reg
tel. 01206 824379
mob. 07801 365359

M. J. GREEN

TRADING AS M. J. GREEN TREWORK (WIVENHOE) LTD

Established 1977

41 VANESSA DRIVE, WIVENHOE
ESSEX CO7 9PB

TELEPHONE 01206 825503
(24 hour emergency service)

Mobile phone numbers:

07786 632002 • 07771 638064
07771 638067

- Tree felling contractor
- Surgery, coppicing
- Reshaping, reducing
- Hedge cutting, grass cutting
- Rough gardens cleaned and cleared
- Stump grinding
- Fencing supplied, erected and repaired
- All rubbish taken away
- Suppliers of firewood, logs

Free estimates and advice

Full insurance cover • N.P.T.C qualified

M.P.F Electrical
NICEIC, Approved Contractor & Domestic
Installer

Martin fuller
www.mpfelectrical.com
martyspark66@hotmail.com
Checkatrade.com
Where reputation matters

mobil 07903180828
Rolec car charger installation
Olev government grant registered.

WALKER WORKS

Garden and General Maintenance Services

Ryan Walker
01206 824080
07887 746399

ALRESFORD BIKERS

As we emerge into Spring, waking a dormant bike needs care. Breathing life back into your bike is not to be rushed. Don't just run out to the bike, stick the key in, and hope for the best, like I did once, and nothing happened. We need to take the time to look after them and bring them back to life gently! Most know about the normal things to check first, before that first, blissful, joyous ride. But for one of our readers this might be their first Winter bike slumber, and there can be issues to sort out first.

A modern battery kept in good nick is most likely to be OK. People not blessed to be bikers won't know but bike batteries are very much smaller than even small car batteries, and exponentially more likely to suffer. Come the day you want to go riding, that's the day you'll discover the pain of a flat battery, so go check now! The best way to look after it is to connect a battery tender and leave it alone. They are specifically made for looking after batteries for long periods of non-use and maintain them at premium charge. Boaties use them a lot, and caravaners, and there are many at the South Pole keeping snowmobiles going. Personally, mine is on a fly-lead permanently fitted to the bike, with a connector, which I plug in when I park up. If you have to charge your bike's battery, do it as gently as possible or you'll damage it. Don't use a high-power car charger on a tiny bike battery, unless the instructions say you can. They charge like a wounded Rhino and can reduce your little box of volts to a warm pile of scrap in about an hour, like mine did once. Tenders are the way to go.

Tyres need maintaining, even when not in use, but it's not a big deal. All you need to do is rotate them a little, occasionally, to stop flat spots developing, and keep the pressure up, as otherwise they will very slowly go down over time, like mine did once. Give them a good inspection before you go on that first ride after storage. Make sure there are no cracks in the sidewalls, or anything that just looks "wrong". Check the pressures, then discover your pump is busted, like mine was once. Depending on how long the bike has stood, take it easy for ten miles or so, and gently let the treads scrub in, removing the shiny surface where the rubber has hardened. (If it's been stood for years, new tyres are a must).

Brakes can seize up if you leave them long enough, in poor conditions, like mine did once. Like everything else, they like being used and stay well up to the job if they are. But store them for any length of time, and they start to corrode just where you can't easily clean; fluids go off, and they won't be as good when you drag your bike out for that lovely first ride. Cable brakes are becoming rare but if you have them, they can still seize up, as can cable clutches. So, check them over before you go. Just making sure you can stop before you go is sensible and easy! (Like I didn't once, disastrously for my wife's flowerpots in the garden).

Chains can be a small problem, simply because you rely on them to move, and they might be rusted, stiff-linked, or just plain dirty, depending on where and for how long they've been stored. A good clean and lube usually does the trick. Check it over to make sure it's in good nick, and all should be well. A busted chain is a nightmare at any time but perhaps at high speed, it can write your bike off. It might

not be much fun for the rider either. Mine wasn't. Most chain issues can easily be rectified, so long as the user knows what they're doing, as my Dad taught me when I was about 4. Remember, if your fingers are near the chain, only rotate the wheel backwards. Not forwards, trapping your digits and sending yourself to hospital. Like I did once.

Wheels and other bare metal parts often suffer from long storage too. Cast wheels can grow white "fur", which is just corrosion and cleans off. Bare metal that has been OK all summer, can start corroding overnight! A good coating of preservatives protect for ages, but even they need maintaining over time. Don't get any on the brakes though, like I did once! Rusty rims, flaking chrome, tarnished castings and corroded spokes won't ruin the bike immediately, but will make it look neglected, and detract from your pleasure. Give the wheels a good clean off when you bring the machine out, and any issues should be easy to spot.

Engines like to be woken up gently. Maybe for months they haven't moved, and all the oil will be down in the sump. Top ends will have very little, if any, oil in there, and jerking them into life dry can cause friction damage that is very expensive to fix. Like mine was once. It is difficult to gently start up a modern motorbike (or any) engine though. I haven't had a kick start for over 40 years now, and they are perfect for this purpose. I don't even think about opening rocker boxes and squirting oil on the cams anymore either, and probably most people don't, if they ever did! (And anyone under about 30 is now scratching their head). And if I just press the starter, it will roar into life dry, defeating the object. If it can be done, turn the engine over on the starter but with kill-switch off, just to get some oil moving around the motor. (Some older bikes can do this; in case you're wondering. My old Honda could). Even that is more difficult to do these days though. Or you could pull the plug caps off and spin the engine on the starter a few times. If you have to start it without any prep, when you fire up for the first time, it will be noisy, like a galvanised bucket full of spanners, just for a moment. So long as that noise ceases, all is well. The gentlest you can be with most modern bikes is to leave the throttle well alone, and just let the bike's electronics sort itself out. Not like an old-fashioned carb-ed bike, when progressive handful of throttle and a heroic swing on the kick starter was demanded, eh? And your foot slips and you bash your shin against the footrest, like I did once, requiring stitches. The horrendous rattly noise should go in under about five seconds, and that is how you know the oil is moving. Let it warm up without blipping the throttle until it is nice and hot. Got it? No touching the throttle!

Electrics, switches, lights, and all those peripherals we tend to fit without thinking about them ever again, all need a little bit of TLC. Brake light switches, indicators, lights, dip switch, heaters, any switch I can find, I switch every single thing on and off a few times, just to make sure they all work and all the contacts, er, contact, properly. Electrical contacts that haven't been used for months can tarnish a little, and sometimes need a little persuasion to work properly. This is when you discover some switch or other no longer working, even if it did when you parked it. Or a bulb

continued on next page

that has mysteriously blown over the Winter, even though it was working when you put it away. I have no idea how this happens, but it does. Mischievous shed fairies, maybe? I had a mouse nest in my fairing once. It ate just one single wire. I have no idea why. I replaced it, and all was well. I don't know where the mouse went!

Another somewhat controversial modern factor is E10 petrol. I'm not going into the controversy here, but the effects can be bad for petrol engines. The one major failing is that Ethanol goes off even faster than the weedy petrol it is contained in, and that makes modern, extremely lean-running, engines harder to start. Lack of use can still gum up pipes, pumps, taps, jets, and E10 can corrode some plastics, seals, pipes, etc., and all those things in much the same way as ever if left long enough, like mine did once. But Ethanol is also highly hygroscopic, and if left for a long time will simply suck the moisture out of the air and dump it in your petrol tank. Naturally, that is where the fuel pickup resides, so it can suck up water if there is enough present. That's why the pickups are not at the very bottom, but a tiny bit raised from the lowest point. So, if I know I'm not going riding for a while, I fill the tank right to the top, leaving as little airspace as possible to reduce the potential for moisture. If your bike has stood for more than about a month, and just doesn't want to go when you bring it out, if it coughs and splutters, like mine did once, fires occasionally but spits and wheezes, the petrol is nowadays highly likely to be the issue.

Eventually, the great day comes! It's the weekend. The Sun is out, there's no howling wind, the rain has washed all the salt away and dried up. You're going riding, and that's the end of it! When you drag your machine out of hibernation, give it a good clean, check it for operation throughout, operate everything that can be operated, check (or re-install) the battery, (the picture hopefully shows a very healthy battery) check tyre pressures, and fire it up gently. Like I always do, having learned all this the hard way. Leave it warming up while you go get your kit on. It will be hot when you come back. Then, point yourself at the scenery and take off on that first, blissful, deliriously joyous ride. Suddenly, everything else in the world is gone, and you're at one with the machine again. Never forget that moment or lose that soppy grin. You can pick the flies out of your teeth later.

If you want to know more about how to maintain your bike, like I did once, how to store it for next Winter, how to bring it back to life, what bits of kit work and which don't, how much they cost or where to get them, how and when to use them, you can come meet the Alresford Bikers, who know this stuff. We meet in the Pointer Inn on the second Tuesday of every month at 8pm. We go riding on most Sundays leaving the Pointer Inn car park at 0930, and you can contact us there. Or come with us! Or contact one of us. Don't be shy, we don't bite!

Al Gillard



ALRESFORD NEIGHBOURHOOD POLICING February 2022

RECORDED CRIMES: 5

Crime Types: Criminal damage - Assault (ABH) - Theft of a motor vehicle - Neglect - Control/coercive behaviour

Incidents reported: 15

Types reported: Drink drive - Obstruction - Suspicious circumstances - Hoax call x 2 - Nuisance - Attention to Intruder Alarm - Concern x 2 - Ass agency - Domestic x 2 - M/V found - Other

TRUCAM monthly Total: 0

Parking on grass verges/considerate parking.

There have been Reports of Cars parking on grass verges near the school. This not only damages the turf, but causes visibility issues when trying to pull out a driveway and pedestrians having to walk in the road.

Drivers mainly do this for consideration of other road users, without realising the other problems it causes. Please park on the road, this actually helps to slow down traffic.

Damage to bus stop, Wivenhoe Road - 06/02/2022

Suspects unknown at this time have caused damage to the bus stop in Wivenhoe Road. A metal post has been removed from the ground, hanging basket pulled from the lamp post, flower display timber kicked down and other sign damage. If you have any information please contact 101 - using crime reference number 42/33661/22 or contact Julia.brandon@essex.police.uk

Dog faeces not being picked up

Dog walkers have been reported for not picking up their dog mess around Staunton Close and other parts of the village. All dog walkers should carry poop bags with them. It is not only inconsiderate to leave it for someone else to clear up, but carries harmful bacteria that can effect children if coming into contact with it.

You can be issued with a fixed penalty notice, currently £50.00, if you are witnessed not clearing up after your dog or you can be taken to court and face a fine of up to £1000. If witnessing, go to [Report a dog fouling problem - GOV.UK \(www.gov.uk\)](https://www.gov.uk) **You never know who is watching you, whether a person or CCTV**

Fly-Tipping (information below taken from [TDC](https://www.tdc.gov.uk) website)

Fly tipping is illegal under The Environmental Protection Act 1990 and the maximum fine is £50,000 and/or up to five years in prison.

[#CrimeNotToCare](https://www.tdc.gov.uk) is helping ensure residents do the right thing with their rubbish and to reduce the amount of household waste that is fly-tipped by rogue traders who offer to take people's waste away for money and then dump it. Giving waste to a 'man with a van' who offers to get rid of it cheaply could end up proving costly for people which can result in a fine and/or criminal record.

Remember - if it's your waste, it's your responsibility. If your waste is found dumped, even if someone else has done it, you could be held responsible for the crime.

Please see the Tendring DC website ([tendringdc.gov.uk/node/13011](https://www.tendringdc.gov.uk/node/13011)) for information on how to protect yourself from rogue waste traders and for the online report it form

Phone Scams

Scammers are constantly finding new ways to trick people and phone scams are changing all the time. If you've been the victim of a scam don't be embarrassed to report it. It can happen to anyone.

If you are effected by any scams, please go to <https://reporting.actionfraud.police.uk/login> for online form to report to action fraud, or by ringing **0300 123 2040** Monday to Friday 8am - 8pm.

The information you give to Action Fraud can help track down the scammer.

Have you spotted a suspicious email?

If you have received an email which you're not quite sure about, forward it to the suspicious Email Reporting Service (SERS): report@phishing.gov.uk

**Reporting incidents the correct way
To report an incident please ring 101**

Or report it online: <https://www.essex.police.uk/do-it-online/report-a-crime/>

If residents have any concern on suspicious vehicles/activity/drugs in the village, please feel free to contact me, with as much detail as possible, including contact details.

Email- julia.brandon@essex.pnn.police.uk

THE CHARITY BAG

Still collecting used stamps for Bone Cancer Research "until there is a cure"

Spread the word and tell friends and family to share our appeal. Every stamp, Horizon label (the square white and gold labels that the post office stick on everything instead of stamps), collection and 1st day covers will help raise vital funds for the Bone Cancer Research Trust.

STAMPS

Stamps are always welcome and 2kg has just been sent. I wonder how many more will be used in future because on April 4th, the 1st class postage will be 95p and 2nd class 68p.

Thanks for what the posty does!

KNITTING

Wool and needles available and free

Just seen that Tom Daley our most decorated GB diver now has a knitting range 'Made with Love' available online at <https://bytomdaley.com/>

Take care as always

Christine Stimpson

2 Coach Road, Alresford (opposite the Dr's Surgery)

WYVERNWOOD SUCCESSFUL RECRUITMENT DAY

Wyvernwood are happy to announce that we had a great response to our recruitment call in the last edition of the Alresford Advertiser. This outreach led to us holding a successful recruitment day at the Alresford Village Hall in February.

Nick White led conversations on the day and had this to say, "I was completely blown away with both the attendance and excitement towards Wyvernwood. To say I'm impressed with the local talent we saw would be an understatement. Here at Wyvernwood we've always believed that a local recruitment initiative was the correct one and meeting everyone has solidified those beliefs."

"I just wanted to take this opportunity to thank everyone personally and let them know that in the coming months I'll be looking to reach out to many of the individuals on the day who attended with the good news that we'd like to take them forward into the next stage of the interview process.

"I also wanted to make members of the community who couldn't attend aware that they can still become a part of the story by attending one of our next planned recruitment days."



The next recruitment day will take place on the 19th of April and will be by invitation only. We will continue to hold these days to ensure the local community know that soon there will be positions available for full time and part time staff on a seasonal basis. With a variety of roles including Duty Management, Retail, Entertainment, Maintenance and Park Support to be filled.

Should you be interested in becoming a part of the Wyvernwood team, please send your CV and a cover letter detailing which type of role you would like to be considered for to careers@wyvernwood.co.uk. We look forward to hearing from you!





OCM

Orchard Cottage Montessori
Nursery Ltd
Happiness and learning grow Together



- Outstanding nursery education for girls and boys aged 2-5 years
- Government funding accepted for 3 and 4 year-olds
- Set in beautiful, secluded grounds in the village of Alresford



For more
information
contact us
today

www.orchardcottageмонтessori.co.uk

01206 825607

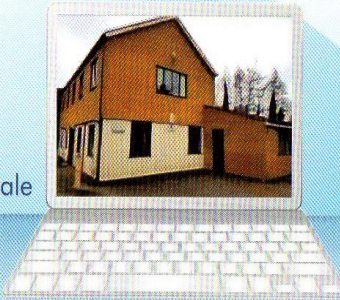
Email: o.c.m@btconnect.com

Tending Laptops

Micro Repair Centre

07305 076777

Repairs to board level
Quality refurbished laptops for sale



1 Orchard Business Units
Cockaynes Lane, Alresford, Essex, CO7 8BZ
info@microrepaircentre.co.uk
www.microrepaircentre.co.uk

ALRESFORD VILLAGE SHOP

Colchester Main Road

01206 828169

07766910713

Extended Opening Hours:

Monday - Saturday: 5.00am- 9.00pm

Sunday: 6.00am - 8.00pm

New, more variety stock available including a wide range of beers, wines, spirits, groceries, confectionery, soft drinks etc.

Hot food: sausage rolls & pasties

LOOK OUT FOR OUT SPECIAL OFFERS

MyHermes Parcel Label Printing, Send & Return Service also Collection Point
Printing Service & Payment Facility available in Store

Agents for Danes Launderers & Dry Cleaners

Cash Machine

Newspaper Delivery

Customer Car Park



Cleaning, Washing & Ironing

Trained & Insured



Domestic
Commercial
One-off
New Builds

CLEAN Breeze

Professional clean,
tailored to meet your needs

Call Victoria on 07941 717372



www.simplyhaberdashery.com

Check out our vast range of products and low prices

Fabrics, quilting accessories, Braids & trimmings, buttons, Cords, Elastics, Fasteners, Sewing & mending accessories, Sewing machine accessories, Threads, Velcro, Ribbons, Zips, Tapes and much more....

Free delivery or shipping!!



01206 581177

info@simplyhaberdashery.com

Paypal and all major credit & debit cards accepted

MARK BRUMPTON TREE SERVICES

TREE SURGEON

- ♣ Reshaping,
- ♣ Reducing
- ♣ Surgery Work
- ♣ and Clearance

FULL INSURANCE

For Free Estimate
and Advice

TELEPHONE:
01206 825498
or **07885749934**

Roxburgh,
Colchester Main Road
Alresford
CO7 8DG



SALES SERVICING REPAIRS HIRE
OF

GARDEN MACHINERY AND EQUIPMENT

*

HEDGE TRIMMERS – CHAINSAWS - STRIMMERS

WALK BEHIND MOWERS – LAWN SCARIFIERS

CHIPPERS – SHREDDERS – ROTAVATORS

RIDE ON MOWERS

*

UNIT 1 FRATING HALL FARM, CHURCH ROAD,

FRATING, COLCHESTER, CO7 7HD

TELEPHONE: 01206 250990/07860 411024

WEB: www.gbfarmservices.co.uk

EMAIL: gbfarmservices@btconnect.com



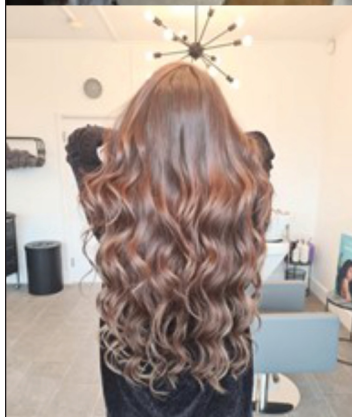
Sage Hair Studio Ltd

45 Station Road

Alresford

CO7 8BU

01206 616970



AJ HOME IMPROVEMENTS

and repairs

General Building Services

Plastering

Kitchens

Bathrooms

Carpentry

Plumbing

Electrical

Fencing, Paving & Patios

Professional - Reliable - Affordable

01206 306169 or 07766 565249

www.AJ-HOME.co.uk





DUNMOW



4.9 RATING ON OVER 600 REVIEWS



SKIP HIRE.
METAL RECYCLING.
GRAB HIRE.
AGGREGATES & TIPPER HIRE.
HAZARDOUS WASTE.
ROAD SWEEPER HIRE.
WASTE COLLECTION.
LIQUID WASTE DISPOSAL.

01206 307070 | DUNMOWGROUP.COM 

wjr

Mechanical Services



COMMERCIAL & DOMESTIC PLUMBING

-  **Free, no obligation quote**
-  **Boiler renewals and servicing**
-  **Vaillant approved installer**
-  **Bathroom design & installation**
-  **Water main repairs/replacements**

Alresford based – call Russel on
07971 519912



Carla Bryant

Nova Garden Care

GARDEN CARE AND SERVICES
 GRASS CUTTING
 HEDGE TRIMMING
 PLANTING
 WEEDING
 MAINTENANCE

07890 602626
 Novagardencare@hotmail.com
 Facebook WhatsApp

SJ conversions

Builder

Free Estimates

- EXTENSIONS
- LOFT CONVERSIONS
- NEW KITCHEN FITS
- NEW BATHROOM FITS
- GARAGE CONVERSIONS

07899045847

01206824752

stuartjohnbush@gmx.co.uk

L. J. Watts

Memorial Stonemasons

Together we will create a perfect memorial tribute for your loved one



- Est. over 300 years
- Dedicated craftsmen
- Bespoke memorials
- Personal hand carved designs
- Additional inscriptions
- Cleaning and restoration

01206 867 167
www.ljwatts.co.uk



SIBBONS

PLANT & TOOL
HIRE

TRADE/DIY
STORE

Your local hire and trade centre!!

Family run since 1964.

Open Mon - Fri
7 - 4.30

PLANT & TOOL
REPAIR

Tel: 01206 823448
Fax: 01206 825266
sales@sibbons.co.uk
www.sibbons.co.uk



Elegant WINDOWS,
Beautiful DOORS
& Stylish CONSERVATORIES



As seen on TV



Installed according to the Tricept
Better Fitters Code Of Practice

Suppliers of TRICEPT Multipoint
Locking windows, doors and
conservatories. Fascias, soffits
and cladding also available.



Wherever you are we deliver quality

HOME IMPROVEMENTS

01206 823903

www.aandk.co.uk

5 minutes from Essex University on the Main Road in Alresford

A&K House, Main Road, Alresford, Colchester CO7 8DB

IAN LONGHURST BUILDER

Established 1982

WORKING IN WIVENHOE FOR OVER 30 YEARS!

All external work inc. Brickwork and Roofing

All internal work inc. Kitchens and Bathrooms

Free Advice and Estimates

Speak to Ian or Tina:

☐ 07484 724262

ianlonghurstbuilder@outlook.com

SMALL SCALE SKIPS



1½ & 2 YARD MINI SKIPS
COMPETITIVE RATES

WE DELIVER

SAND BALLAST STONE MOT TYPE I & II
SOIL CRUSHED CONCRETE

01206 822770 OR 07802 265712

PHONE ANYTIME

JFS

Heating, Plumbing,
Electrical and
Renewables Specialist

Friendly and Trustworthy
Local Engineer

Please Call Jack on
01206 820599
07818 034032

17 Heath Road
Alresford
Essex
CO7 8DT

Alresford Garage Ltd

A family business established since 1975

- Routine servicing
- MOT's (free retests)
- Tyres and exhausts
- Air con centre
- Loan Cars
- Servicing to cars under manufacturer's warranty



Alresford Garage
Main Road
Alresford
Colchester CO7 8DB

Reg. No. I205244

- Diagnostics and code reading
- Easy Parking
- Free coffee
- Good Garage Scheme
- Comfortable Waiting Room

Service: 01206 825245 . Sales: 01206 822875
www.alresfordgarage.co.uk



AM GAS SERVICES

Specialist in Gas Service & Repair

Bathroom Design & Installation



Call us today
(No call out charge)

075811 66959
01206 826122



Proud members of
Checkatrade.com
Where reputation matters



**Accredited installer &
can offer up to
12 years warranty**



GAS SERVICES

- ✓ Boiler Servicing From £40
- ✓ All Makes & Models
- ✓ Central Heating Installations
- ✓ Discount for OAP's
- ✓ LPG Qualified
- ✓ 24hr Call Out
- ✓ Alresford Based.
- ✓ Covering Colchester, Clacton & Surrounding Areas



www.amgasservices.co.uk

PLATINUM PARTY IN THE PARK

at Alresford Playing Field

FREE ENTRY

Saturday 4th June 2022
12pm - 4pm

EVERYONE WELCOME

BAR

Join the community for a family picnic at the park as we celebrate the Queen's Platinum Jubilee

BBQ

FANCY DRESS OPTIONAL

LIVE MUSIC BY

SILENCE THE SIRENS

STALLS

ICE CREAM

CHILDRENS ENTERTAINMENT

Bring your own blanket/chairs & picnic
Sorry no glass or dogs

NAME THE CORGI

ALRESFORD W.I. WARMLY INVITE YOU TO A FASHION SHOW

BY TOGGS OF BRIGHTLINGSEA

FRIDAY 17TH JUNE

7.30PM

AT ALRESFORD VILLAGE HALL

For further information contact Chris James on 01255 764769

RAFFLE

ADMISSION INCLUDING REFRESHMENTS
£3.00



CONGRATULATIONS ANDREW FORDYCE MBE

Congratulations to our Rector, Andrew Fordyce for the award of his MBE. This was "For Services to the people of Colchester: Supporting 2 and 3 Para Rear Party during their Afghan Campaign and the Medical regiment 2010 to 2020. Being a Co Founder and then Chair of Colchester Foodbank 2008 to present the Charity fed and signposted 15,000 people last year.

ALRESFORD ADVERTISER CONTACT DETAILS

EMAIL: alresfordadvertiser@gmail.com TELEPHONE: 01206 825739 ADDRESS: 22 Station Road, Alresford, CO7 8BT

ARE YOU INTERESTED IN ADVERTISING?

For enquiries about advertising your company or organisation, please contact us via the email address above

CORRESPONDENCE

Any correspondence for publication must be accompanied with your name and address or that of your organisation.

DISCLAIMER

Submission of material does not always guarantee inclusion within the publication, and advertisements and editorials are published in good faith. The editor cannot be held responsible for the accuracy of any advertisements placed by advertisers. Editorial material does not necessarily reflect the views and opinions of the editors and neither editorial nor advertisements are to be read as recommendations on the part of the editor

COPY DEADLINE

The editorial and advertising deadline for the next edition will be:
8th MAY 2022