

THE **ALRESFORD** **ADVERTISER**

April/May 2019



Countdown to 50

The Alresford Advertiser Celebrates
its 50th Anniversary
in May 2020

See page 3



FASHION SHOW

by

EDINBURGH WOOLLEN MILL

FRIDAY 31st May 2019

Alresford Village Hall

Hosted by Alresford WI

See page 3

TABLE TOP/PLANT SALE AND COFFEE MORNING

In aid of Parkinsons uk Colchester branch

SATURDAY 18TH MAY 2019

ALRESFORD VILLAGE HALL

10.00am - 12.30pm

Cakes, raffle, books, bric a brac, craft stalls etc

Tables £7 (advance booking)

Please contact Jeanette on **01206 825008**

Donations of raffle prizes gratefully received

**STOP
PRESS**

ALRESFORD FAMILY FUN DAY

Saturday 6th July

3pm 'til late

More information on page 3

If anyone would like to be involved please
contact Russell Milburn 01206 825739



Coffee Morning

The annual coffee morning and box opening in aid of the Children's Society will be held in the Hub on:

Saturday 13th April 10-12 noon

See page 3 For more information

Delivered to every household & business in Alresford

Also available online via the Parish Council & Village Hall websites -
www.alresfordpc.com & www.alresfordvillagehall.co.uk

ST ANDREW'S CHURCH



www.alresfordchurch.net

 Find us on fb: ParishChurchesofAlresfordElmsteadandThorrington-TenpennyVillages

SERVICES

Sunday Morning Services: 11am with crèche for under 3s & Sunday Clubs for ages 3-15s. Also an 8am service on 1st Sunday of month.

Sunday Evening Services: as advertised

Mid-Week: Morning Prayer every day Monday - Friday except Thursday which is Communion: 9am in the Sanctuary.

REGULAR GROUPS

<http://tenpennyvillages.uk/calendar.html>

Children, Young People & Families

Powerpack for ages 3-8: Sunday mornings during main Sunday service (not 1st Sunday - All-age Worship instead).

Bumps 'n' Babies: Tuesdays in term-time 10.30am to 12 noon in the Hub.

Scramblers for under 5s and their carers: Mondays in term-time 1.45 to 3pm in the Hub.

Razmatazz for primary aged children: Mondays in term-time 3.30 to 4.30pm in the Hub.

Distinctive for ages 9-15s: Sunday mornings during main Sunday service (not 1st Sunday - All-age Worship instead)

Hangout@theHub: Youth Group for years 6 upwards - Thursday evenings in term-time 6.30-8pm in the Hub.

Messy Church: - for the whole family - 3rd Friday of the month 4.30pm in the Church & Hub (19th April, 17th May)

Adults

Home Groups: Tuesday evenings, Wednesday afternoons & evenings.

Internet & Book Cafe: fortnightly on a Wednesday 10am to 12noon in the Church: (3rd & 17th April, 1st, 15th & 29th May)

Memories Cafe: 1st Thursday in the month at 2-4pm in the Hub (4th April, 2nd May)

Friendship Circle: 2nd Monday in the month 10.30am - 12 noon (8th April, 13th May) in the Hub.

Relax & Renew: Relaxation group 2nd Friday in the month 1.30 to 3pm (12th April, 10th May)

Knit 'n' Natter: Alternate Tuesdays in the Hub at 2pm (9th & 23rd April, 7th & 21st May)

CONTACTS:

Please contact the Associate Priest Rev. Pauline Hart (01206 826318 or assocpriest@tenpennyvillages.uk) for information about services, groups or any church activities - also baptisms, weddings & funerals

Other Contacts:

Youth and Schools Worker: Charlotte Day (Charlie) youthworker@tenpennyvillages.uk

Churchwardens: Wendy Wilson (01206 825040) Lyn Bull (01206 827146)

stachurchwardens@tenpennyvillages.uk

Bookings for the Hub: Meg Burdus 01206 820618

LENT & EASTER 2019

Sunday 14 April - Palm Sunday:

9.30am: St Mary Magdalen Church Thorrington

10.00am: On the Green at Elmstead and procession to Trinity Methodist Church

11.00am: St Andrew's Church Alresford

Holy Week Reflections:

Monday 15th April 7.30pm:

Weeping over Jerusalem

St Mary Magdalen Church, Thorrington

Tuesday 16th April 7.30pm:

Anointing of Jesus

St Andrew's Church, Alresford

Wednesday 17th 7.30pm:

Washing of the disciples' feet

St Anne & St Laurence Church, Elmstead

Thursday 18th 7.30pm:

Last Supper

St Andrew's Church, Alresford

Friday 19th April - Good Friday:

10.00am: Good Friday Workshop

St Anne & St Laurence Church, Elmstead

Easter themed activities for all the family.

11.00am: Good Friday Reflective All Age Service

St Andrew's Church, Alresford

2.00pm: Quiet Hour at the Cross

St Mary Magdalen Church, Thorrington

4.30pm: Messy Church - Easter

St Andrew's Church, Alresford

Saturday 20th April - Holy Saturday:

7.30pm: Easter Fire Service

St Anne & St Laurence Church, Elmstead

Sunday 21st April - Easter Day:

5.30am: Sunrise Communion Service

St Andrew's Church Alresford

9.30am: St Mary Magdalen Church Thorrington

10.00am: St Anne & St Laurence Church Elmstead

11.00am: St Andrew's Church Alresford

ALRESFORD FAMILY FUN DAY

Saturday 6th July 2019
3 'til Late

**Loads of Stalls, Activities & Attractions
including:**

**Tombolas, Cake & Plant Stalls, Beauty
Treatments, Candles, Jams/Chutneys,**

Coconut Shy, Punch & Judy,

Face Painting, Pony & Trap Ride,

Carousel Rides, Lego Treasure Hunt

Falconry, Dog Show, Talent Show

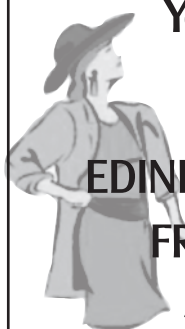
**Refreshments, including a Barbeque,
Candy Floss, Tea/Coffee/Cake, Ice Cream;
there will also be a Bar**

Live Music from Band 'Sound Of Sirens'

Lucky Programme Draw & Raffle

More information coming soon.....

**If anyone would like to be involved please
contact Russell Milburn 01206 825739**



**You are invited to a
FASHION SHOW**

by

EDINBURGH WOOLLEN MILL

FRIDAY 31st May 2019

**Alresford Village Hall
Doors open 7.00pm for 7.30pm.**

**Admission £1 on the door,
includes refreshments.**

Hosted by Alresford WI

**For further information phone
Jan Stewart on 01206 825184**



CHILDREN'S SOCIETY COFFEE MORNING

This annual coffee morning will take place in the Hub on Saturday 13th April 10 am - 12 noon.

There will be bring and buy, cake and card stalls and a raffle. As usual, this is an opportunity for box holders to have their boxes emptied. Please come and support this worthwhile cause which supports vulnerable families and children including runaways in the U.K.

We've Reached 50! ALRESFORD ADVERTISER 50TH ANNIVERSARY

The Alresford Advertiser will celebrate 50 years of publication in May 2020. Over the next year we will include some of the articles and photos from past editions culminating in a 'Special 50 Years Edition' to be included in the April/May 2020 magazine.

The Alresford Advertiser was founded in May 1970 as a free village news sheet by the Rev Andrew Halliday-Smith, soon after he became Rector of Alresford. Started as a monthly news sheet sponsored by St Peter's Church, the early editions were smaller than now and contained no photographs. It remained monthly until the end of 1972, when it became quarterly for a while. The last quarterly edition was in November 1978, after which it was produced on a bi-monthly basis - the first covering December 1978/January 1979. It continues as a bi-monthly magazine to date.

In addition to paid adverts, the Church continued to sponsor the magazine until October 1973. From November 1973 onwards, the Advertiser was funded by the paid advertisements within it and donations from villagers; currently the revenue from advertising is its only funding.

Following the Rev Halliday-Smith, other editors have been:

Mrs E Cain

Mr Brian Briggs

Mr David Clarke

Mr Michael Hester

Ms Allison Wade and Mrs Hayley Milburn (current)

From May 1970 to date, there have been many people assisting in the production and distribution of the magazine; without their wonderful support and work, as well as all of those who have advertised over the years, there would not be a magazine.

The information above has been gleaned from previous editions of the magazine and therefore in some part may be incomplete; if you have any information or previous copies (especially the earlier editions) that you would like to share, please contact Allison or Hayley at alresfordadvertiser@gmail.com





The Pointer Alresford

Wivenhoe Rd, Alresford, CO7 8AQ

01206 824378



follow us on
Facebook & Twitter

www.thepointerpub.co.uk



Food Served

Tuesday ~ Saturday 12pm-3pm

Friday ~ Saturday 6pm-8pm

Our Sunday Roast 12pm-3pm

Roast Beef, Pork or Lamb,
served with fresh vegetables &
all the trimmings from £7.95

***BOOKING ADVISABLE -
DON'T MISS OUT***



LIVE

MUSIC Saturday 20th April

Live music with "Sammi B" - from 8.30pm

Sunday 21st April

Live music with "Kinni Lee" - 5pm til 9pm

Sunday 5th May

Live music with
"The East Coast Shakers" Band - 5pm til 9pm

Saturday 18th May

Live music with "Sax & The Voice" - from 8.30pm

Sunday 26th May

Live music with "Ticket 2 Ride" Band - 3pm til 7pm



FEMALE TRADES PERSON

Mermaid Home Solutions
Colchester

*For all your plumbing, plastering
and tiling*

no job too small

free quotation

*quality, reliable, clean
and
friendly service*



07736341743

mermaidhomesolutions@gmail.com

ALRESFORD VILLAGE SHOP

New look refurbished store
under the Premier name

Colchester Main Road
01206 828169

Extended Opening hours:
Monday - Saturday: 5.00am - 8.30pm
Sunday: 6.00am - 8.00pm

New, more variety stock available including a
wide range of beers, wines, spirits, groceries,
confectionary, soft drinks etc.

NEW "Delice de France" bakery products,
Jam Doughnuts, Croissants, French stick,
Hot sausage rolls etc.

LOOK OUT FOR OUR SPECIAL OFFERS

Newspaper delivery

Agents for Danes Launderers
& Dry Cleaners

Cash Machine

MyHermes ParcelShop
Customer Car Park



ALRESFORD WI

Alresford WI started the year on a musical theme with songs from duo Jenny and Chrissie in January, followed in February by a fascinating talk from Pip Wright on the Whistlecraft family of Rickingham in Suffolk, with Mr Wright taking on the character of one of its most notorious members, a noted poacher and general 'bad lot', and making us believe we were in the presence of a lovable rogue! We've also enjoyed two trips to the Mercury Theatre, to see the musical 'Annie' and now we know whodunnit in the Mousetrap - but mustn't tell! In March we went up in the world somewhat, learning about Couture Millinery with Capelli di Oggi, and held our Annual Quiz, hosted by Chris Sanderson.

On Thursday 11th April, the committee will stand back from organising the meeting and hand everything over to the members. Our excellent speaker will be Gary Egerton whom we have welcomed before, this time telling us about 'Hidden London' - but what else will happen we won't know until the evening, although tea and cake are almost certainly involved (I hope!).

On Tuesday 30th April we will be joining with five other local WI's in our Annual Group Meeting. This year it is hosted by Brightlingsea and will be held in St. James's Church, and is open to members and non-members of the WI. The speaker will be Steve Scruton talking about 'My Life in Radio', and we will be entertained by the Colchester Military Wives Choir. It is always lovely to meet colleagues from other WI's and hear what they are getting up to.

On Thursday 9th May, we will hold our AGM and discuss the resolutions which will be taken forward to the National Annual Meeting to be voted on. One of these will be chosen as the basis of a National Campaign by the WI and some of these have been very influential in the past. This year the subjects include plant biodiversity, using trees to improve the landscape, campaigning against the loss of local bus services, menstrual health, and encouraging women to take a smear test. So as well as offering fun and friendship, the WI takes a lively interest in a wide variety of issues.

On Friday 31st May, we will be hosting another Fashion Show for Edinburgh Woollen Mill, to which everyone is welcome. Doors open at 7.00pm for 7.30pm, entry is £1, to include tea and biscuits. The lovely ladies of Alresford WI will be modelling, and the lovely ladies from EWM will have items for sale and take orders on the night. Come along, have a chat over a cup of tea and maybe treat yourself too!

We hold our meetings on the second Thursday of the month in Alresford Village Hall, beginning at 7.30pm and are always pleased to welcome visitors. We also arrange occasional meals out, day and theatre trips. For more information, contact our Secretary Jan Stewart on 01206 825184.



ALRESFORD HORTICULTURAL SOCIETY

Our first meeting of this year was our Annual General Meeting on 4th March. Over 50 people attended and became members for 2019 and enjoyed the post meeting buffet. The Committee were gratified by the enthusiasm shown by members for extending their tenure for another year. Nevertheless, if anyone is interested in joining the committee please contact Martin Wood on 822877.

I would like to remind society members that our annual plant sale will be at the June meeting. As you tidy up your garden, splitting plants, taking cuttings and sowing seeds please consider potting some up for the donations table.

We are currently organising the purchase of tickets for the Little Bentley Show on 1st to 2nd June and a day trip to RHS Gardens Wisley on 16th June. If you are interested in attending either of these events please bring your payments to April's meeting. A day trip to the Blickling Estate in Norfolk is also being considered for September.

The society meets at Alresford Village Hall on the first Monday in March, April, June, July, September and October at 7:30pm. On 1st April Marion Cable will be taking us through Spring/Easter flower arrangements.

Whether you are a novice or an experienced gardener you are sure to find something of interest at our meetings so please do come and join us.

Cathy Patel

THE CHARITY BAG

KNITTING

Christian Hope International are calling on all of our faithful knitters to rise to the challenge.

They would like blankets, made up of 25 squares i.e. 5 x 5 8 inch squares to celebrate the 25th anniversary since the Charity was founded.

Some of these will be displayed at the A.G.M in the autumn. Every blanket they receive will be given to those in need. An anniversary pattern is available in print form - do pop in.

Thank you for all the donated wool, knitted items and support. Bless you.

STAMPS

Another 3.5kg (7.7lb) of stamps have been delivered, together with a monetary donation to the Bone Cancer Research Trust. A thank you card has been received. They think we are doing a "great job" and just wish they had more support from other communities like ours.

So my gentle nagging did work them!

Take care until next time.

Christine Stimpson
2 Coach Road (opposite the Doctor's surgery)



COLNE BANK SCHOOL OF DANCING

Colne Bank School of Dancing is a well-established & respected dancing school having been part of the communities in Wivenhoe & Brightlingsea for 34 years; we provide comprehensive dance training through the genres of Classical Ballet, Modern Theatre, Tap & Jazz.

Although most of our students dance for fun some of our graduates have been fortunate enough to make a career from dance, as performers, teachers and choreographers.

Whether pupils wish to dance purely for fun or have designs on a dancing or teaching career, the Colne Bank School of Dancing offers a friendly atmosphere with a very high standard of training.

Classes held in: Broomgrove School, Wivenhoe and Colne Community School, Brightlingsea

For information on classes contact:

Jenny Overton on 01206 823178

or email colnebank@gmail.com

www.colnebankschoolofdancing.co.uk

Tendring Laptops

Micro Repair Centre

07305 076777

Repairs to board level

Quality refurbished laptops for sale



1 Orchard Business Units

Cockaynes Lane, Alresford, Essex, CO7 8BZ

info@microrepaircentre.co.uk

www.microrepaircentre.co.uk

R. J. OSBORN PRINTERS AND STATIONERS

6a Morses Lane Industrial Estate, Brightlingsea



For all your printing requirements

From origination to delivery of your product

Established for over 80 years

Call in and see us for a free no obligation quote

Telephone: 01206 302209

Fax: 01206 302991

Email: osborn.print@btopenworld.com

www.osbornprinters.co.uk



OCM
Orchard Cottage Montessori
Nursery Ltd
Happiness and learning grow together

Ofsted
Outstanding
Early years provider
2014/2015

- Outstanding nursery education for girls and boys aged 2-5 years
- Government funding accepted for 3 and 4 year-olds
- Set in beautiful, secluded grounds in the village of Alresford



For more
Information
contact us
today

www.orchardcottagemontessori.co.uk

01206 825607

Email: o.c.m@btconnect.com

COLNE VIEW DENTAL SURGERY LTD

53 Ladysmith Avenue, Brightlingsea
Essex CO7 0JD

01206 302307

Piers Lambert Bchd (Leeds 1992)

MODERN FRIENDLY FAMILY PRACTICE

FREE ON-SITE PARKING

WHEELCHAIR ACCESS AND DISABLED FACILITIES

ONLY WHITE NON MERCURY FILLINGS

CEREC 1 VISIT CROWNS NOW AVAILABLE

COSMETIC WORK - TOOTH WHITENING

NO REGISTRATION NECESSARY

EMERGENCIES WELCOME

VISIT OUR WEBSITE AT - www.colnedental.co.uk

Major card payments accepted



SIMPLY SINGING GROUP

It is very pleasing to report that Jeanette Downing's idea to start a singing group has been a great success. The Simply Singing Group as it is called, had its first session on 22nd February when 35 people turned up to "have a go".

The group is not a choir, but just people who enjoy gathering together to sing songs that in many cases go back some 50 to 60 years and which hopefully will be sung for many years to come.

The group meets fortnightly on Friday afternoons in the Village Hall between 3 and 5 pm. The cost is £3 per afternoon which includes refreshments.

Any surplus funds from the singing group are to be donated to the village hall for special projects that provide facilities for the benefit of all its users.

If you require any further information including future dates etc. please contact Jeanette on 01206 825008 and do come along as judging by the reaction of those who have attended so far, you should have a very enjoyable time.



ALRESFORD FETE ORGANISING GROUP (AFOG)

The Annual General Meeting on March 5th, 2019 formally accepted the nominated representatives from Village groups as Committee.

The Chair, Secretary and Treasurer were then elected and are as follows:

Chair - Russell Milburn
Secretary - Kevin Hoskins
Treasurer - Ian Dimmock

The Treasurer presented an opening Financial Statement for AFOG and details of the Insurance cover now put in place to cover all village events organised by this group.

The Constitution of AFOG allows for additional representatives to be co-opted on so if anyone wishes to become involved with AFOG, please contact the Chair on 01206 825739.

The AGM was formally closed and a meeting on the AFOG followed with top of the Agenda being the Family Fun Day on Saturday 6th July 2019. If you wish to be involved in anyway with this Fun Day please contact the Chair.

WIVENHOE BOWLS CLUB GREEN REOPENS

Spring has arrived and the Green at Wivenhoe Bowls Club will be reopening at the end of April. Over the winter, further work has been carried out on the Green as part of our 3 year renovation plan and the club bar has been refurbished.

Wivenhoe bowls club has approximately 60 bowling members. As well as social bowling, we have ladies' and gentlemen's teams who play in leagues in the Tendring Hundred area. We also enter teams in the Essex Group 1 and have a number of county players. Our winter programme includes short mat bowls, darts, table tennis, cribbage and other Saturday night events. More information is available at www.wivenhoebowls.club

We have members from Alresford and would like to invite anyone else from the village who is interested in finding out more about our club or lawn bowls to attend our open day on Friday May 3rd from 4pm onwards. If you wish to try bowling, you will need to bring some flat soled shoes without heels. You will find the club just behind the garage in the centre of Wivenhoe. The car park entrance is opposite St Monica's Church.



INTERNET & BOOK CAFÉ

@ St Andrew's Church



**ALTERNATE WEDNESDAYS
10AM TO 12 NOON**

Bring & swap children's or adult's books, puzzles & DVDs, access & advice for the internet & just a chance to meet up with friends for a coffee & a chat (and enjoy the home baked cakes)

**3rd & 17th April
1st, 15th & 29th May
Everyone Welcome!**

Direct Animal Feeds

01206 827035

The complete range of feed bedding and accessories for

Horses • Dogs • Cats • Small pets • Poultry

Opening:

Mon-Fri: 9am - 5pm

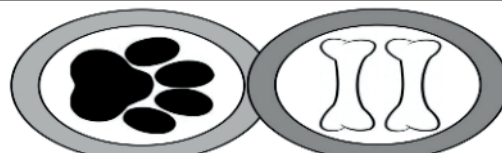
Sat: 9am - 4pm

Local delivery available

Email: directanimalfeeds@talktalkbusiness.net

Maggie: 07885082281

Unit 3 Heath Farm
Cockaynes Lane
Alresford
CO7 8DA



Play Paws
Doggy Day Care

Tendring's First Centre Dedicated to Taking Care of Your Dogs

*Your dog can come and have a fun day with us whilst you work, shop or play

*Please call now, places are strictly limited

*Please note dogs must be registered with us and all sessions booked in advance

*Prices start from £10 per half day

We Look Forward to Meeting
You and Your
Four Legged Family



* Two separate indoor areas
* Outdoor Grassed area
* Lovely walks on our Doorstep



Call now on:
07828 988892
or 07748 322678
to reserve your place!

Find us on **facebook**

Email - playpawsdogdaycare@gmail.com

www.play-paws.co.uk (coming soon)

Unit 8, Orchards Business Units
Cockaynes Yard, Cockaynes Lane,
Alresford, CO7 8BZ

**LOCAL PICKUP
SERVICE AVAILABLE**

ALRESFORD POST OFFICE & CONVENIENCE STORE

55 Station Road, Alresford,
Essex, CO7 8BX

Opening Times:
Monday - Saturday 8am - 7pm
Sunday - 8am - 1pm

Visit us for your:

- ◆ newspapers & magazines
- ◆ beers, wines & spirits
- ◆ cigarettes & tobacco
- ◆ confectionery
- ◆ dry cleaning services
- ◆ wide range of everyday groceries
- ◆ animal & pet feed
- ◆ greetings cards & stationery

DON'T FORGET

your local Post Office offers
many other services including:

- ▶ **Banking Facilities:** free cash withdrawals, cash and cheque deposits, for the following Banks:
Barclays, First Direct, Halifax, HSBC, Lloyds, Nationwide, NatWest, Smile, Santander, The Co-op Bank, TSB, Bank of Scotland
- ▶ **Buy 'One4all' multi-store gift cards** for all occasions - can be spent in over 22,000 stores and online, including *amazon.co.uk, Argos, Currys/PC World, Debenhams, John Lewis, WHSmith, Pizza Express*
- ▶ **Get Car Tax** using your V11 reminder form or V5 Registration Document only
- ▶ **Get Euro's on demand, other foreign currency & Travel Insurance**
- ▶ **Passport check & service**
- ▶ **Get Car/Home/Pet Insurance**
- ▶ **Do Bill Payments:** Gas/Electric/BT Paypoint Outlet



COCKAYNES WOOD AND NATURE RESERVE

WORK DIARY

Thank you to everyone who came along to Alresford Village Hall on February 17th for our open meeting. We had lots of site pictures on hand to view. Roger, our chairman and site warden talked us through the ongoing management of the site before handing over to our guest Chris Gibson. Chris' speech gave us a whole new perspective on watching wildlife and stopping to view the smaller things you might otherwise miss. All in all it was a great afternoon. If anyone wasn't able to make it but has any questions about the site, please drop us a message via our Facebook page.

It was a lovely sunny, if somewhat chilly day for our February work party and we continued with the Hazel coppicing in Villa Wood. We also had to deal with a very large Alder that had reached the end of its life and fallen during the week before.

Towards the end of February we were lucky enough to video one of the lesser seen fauna of Cockaynes - a buck Muntjac, seen just before 9am (you can view this on our Facebook page); we also managed to catch at least one doe on another video.

On February 26th the first of the Colletes Cunicularis bees could be seen emerging on the sandbank colony. Hopefully, and with more sun, we will see lots more soon and then we will hear the continuous drone around the colony.

We have been continuing to clear more of the birch scrub before the start of the Bird nesting season. The raking of this area will help the ground flora to develop and we are looking forward to seeing if any new species of wild flowers appear where the surface has been scrapped. We've found Celery-leaved Crowfoot where the bulldozer went through which is a member of the Buttercup family.

Sightings over the last week or so have included some springtime baby bunnies, a Goldcrest bathing at Cockaynes, a Linnet in Villa Wood, and one of our local Buzzards cruising low over the trees also in Villa Wood.

This year our annual family friendly activity day will be on June 30 Sun 11 AM - more details will follow soon. See our advert on pg 23 for Work Party dates Roger & Val (Wardens)

If you would like to know more about what is going on in Cockaynes nature reserve and see more photographs of the wildlife and events taking place, please have a look at:



Facebook page:
www.facebook.com/Cockaynes

Website:
www.cockaynes.org.uk



UPDATE

Out with the old; in with the new!

As I write (4th March) we have already had some lovely, unseasonably warm spring conditions last week. I say "conditions"; of course, it wasn't actually Spring by anyone's standard measure - yet still, there were some springy things happening! The first sounds of singing **Chiffchaffs** - one of our first spring migrants - were heard last week and butterflies were on the wing. **Brimstones** are usually amongst the first to emerge, with the bright yellow males patrolling woodland rides from late morning.

Southerly winds have indeed brought in some early spring migrants. It will be interesting to see what another blow might do.

Look out at this time of year on your bird feeders for wintering finches such as **Bramblings**, **Siskins** and **Redpolls** feeding up before the northward push. Putting on weight is critical so they are much more likely to be seen in gardens where meals are easy. Look out for **Wheatears** on more open areas as they pass through.

Great White Egrets and **Ravens** would have been unheard of just a few years ago, but both are spreading across the UK. Look out for a large, rangy crow with a diamond-shaped tail and long "fingers" on their wings - often heralded by a deep-pitched "cronk" call as they fly past. Great White Egrets are huge, slightly bigger than a Grey Heron and easily distinguished at distance by their long, black legs trailing behind in languid flight.

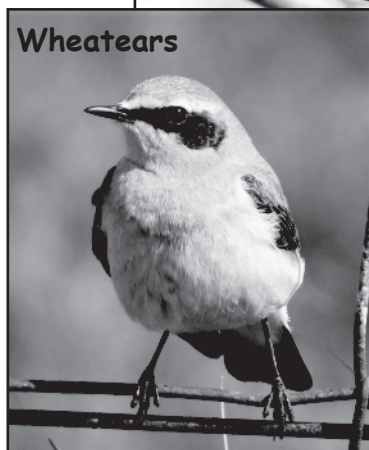
By the time I write next, I'll be sharing some spring delights and I might even ask for some help raising money for Colchester Food Bank as I embark on a sponsored bird watch!

Watch this space!

Glyn



Brambling



Wheatears



Great White Egret

HOME

— DOMUS 360 —

Bespoke Estate Agency

At Home Domus 360 we'll work alongside you to craft a bespoke marketing plan that sells your home in the quickest time at the highest price

We Provide:

- Pro photography with lifestyle staging and twilight shots
- Bespoke 360 tour with the same photographic quality
- Bespoke brochures uniquely designed for each property
- Bespoke selling board to sell the property not ourselves



If we fail to reach the agreed price, we slash our fee!

Home Domus 360

Colchester Main Road, Alresford CO7 8DJ

Tel: 01206 377 888/889 | Email: team@homedomus360.com | Web: www.homedomus360.com

M.D. Spackman Building Services

*Brickwork~Groundwork~Extensions
Fencing~ Paving~Maintenance
Certified Digger / Dumper Driver*

CSCS Registered

Call Mark on 07811 869316 or 01206 827995
Email: the_spackmanhouse@btinternet.com

Alresford, Colchester, Essex

M.P.F Electrical

NICEIC, Approved Contractor & Domestic Installer

Martin fuller

www.mpfelectrical.com

martyspark66@hotmail.com

Checkatrade.com

Where reputation matters

mobil 07903180828

Rolec car charger installation
Olev government grant registered.

**WALKER
WORKS**

**Garden and General
Maintenance
Services**

**Ryan Walker
01206 824080
07887 746399**

**plumbing
heating**

rupert smith m.i.p.h.e

**182 wivenhoe road
alresford
colchester**

C.O.R.G.I reg

tel. 01206 824379

mob. 07801 365359

ALRESFORD BIKERS BE CAREFUL OUT THERE

Here we are, the summer is coming fast now, and the season is well under way. Dusty bikes and cob-webby riders are coming out to play. Time for riders to be careful!

Throughout the winter, as every year, I note that we've disappeared off many a driver's radar, and that becomes a problem for all of us when we start mingling with other road users. Simply put, it is because everyone has become unused to seeing us. So, as riders, we have to be even more ultra-careful than normally. We need to ensure that we are always in a position where we can, and will, be seen. Let's not forget the many distractions that car drivers especially have to contend with. If you're out riding and come upon obviously distracted drivers, give them time, give them space, and be patient. They have a habit of doing something totally random; they may have spotted something in the road that you haven't, like a critter, or an obstacle. So, take your time, live in your mirrors, and listen and look for hazards, because they are there, and they bite. Other road users can help avoid incidents too. Drivers demisting their windows and using mirrors would be a great place to start! I'd love to take another non-biking person for a ride as an observer. It's like putting on a Star Trek cloaking device. Honestly, car drivers, please use your mirrors! I know bikers are not perfect, far from it, all too often. There are idiot bikers out there who bring us all into disrepute, and that's one of the reasons for Alresford Bikers to be here - to promote all that is good about biking, while discouraging hooligan behaviour, and to set a good example. We try very hard too.

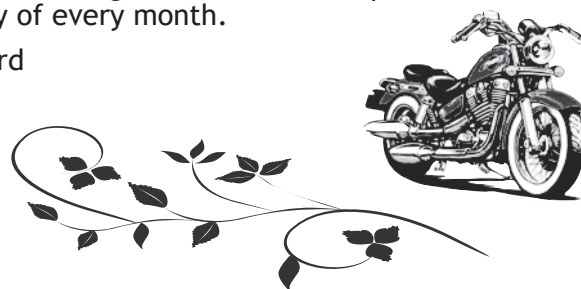
Just one more thing for us all, but especially car drivers when caught up in traffic: filtering. Filtering is legal! In some circumstances, it is encouraged. On my advanced test (tests, I've done it three times) you can lose points for NOT overtaking, and that includes filtering in traffic. Riders, be careful, take your time, remember your cloaking device is on, you are invisible, try not to get wound up too much by people in cars who don't even know you are there. Note too that truckers almost always know you are there. They are so much better at observation but their high platform helps a lot, but don't assume they have seen you. More on trucks another time! But there are certain, for the moment nameless, types of vehicle owner who take great joy in deliberately impeding bikes. Their bored to death, once in a blue moon gaze into a mirror is followed quickly by a jerk towards the centreline, so as to close the gap between lanes. How sad is that? Petty jealousy because their tank is standing still drinking petrol, and they simply cannot bear to be overtaken. It happens every day, in queues. So I say this to them: put your phone down, use your mirrors and get out of the way. Just because you are stuck, doesn't mean we have to be. And we'll always get past you. Always. And every bike that passes you is one less car you are stuck behind - you are not stuck in traffic - you ARE traffic. We're not. And when I actually am filtering, I keep the relative speed right down; because there is another type of vehicle user who is blissfully unaware of anyone outside their vehicle, and who are often surprised when I appear next to them. But seriously, it is as dangerous for bikes to filter much too fast as it is for car drivers not to see you. And the ensuing accident

will be worse. So riders, do your part, and show some care.

Finally, visibility! We're invisible, we know that. Most of us take the care to dress up like an illuminated Christmas tree to be seen by other road users. We know we're nimble and much nippier than others too. We know we can be in and out of vision in a second, and we know drivers can't, and sadly some don't try to, keep an eye on us. One of the issues for us is simply that - we can see ten times further and better than most other road users, hear what's going on better, and are in short, hugely more aware of our surroundings. So, we have to allow for the fact that the other road users are not aware of us most of the time, and to be extra careful, right now, as the season commences.

If you want to gather more first hand, real life experience, or just chew the fat with some every day bikers, why not pop along to the Alresford Bikers monthly meeting in the Pointer at 8pm on the second Tuesday of every month.

Al Gillard



Alresford Lunch Club

Registered Charity No. 1066579

**The Lunch Club is held
every Tuesday
at Alresford Village Hall
from 12.00p.m.**

A two course meal plus tea or coffee is served every week at a cost of £6.00

The food is prepared and cooked on the premises and the kitchen has recently been awarded a 5* hygiene rating by Tendring District Council

Transport can also be provided at an additional cost of £3.50

New clients always welcome

- please contact Franky:

The Autumn Centre,
1 Osbornes Court, Victoria Place
Brightlingsea CO7 0EB
Telephone:- 01206 303702

ALRESFORD VILLAGE HALL UPDATE

THE VILLAGE HALL WEBSITE:

<http://www.alresfordvillagehall.co.uk>

THE VILLAGE HALL FACEBOOK:

<https://www.facebook.com/Alresfordvillagehall/>

The Village Hall Facebook page can be used to advertise local groups and any fund raisers.

Likewise, the Village Hall website can also be used to advertise your groups/events. Please contact Russell Milburn for further details.

Alresford Village Hall Management Committee (AVHMC)

ANNUAL GENERAL MEETING

Tuesday 15th April 2019 @ 7.30pm

**Venue :THE MUNSON ROOM,
ALRESFORD VILLAGE HALL**

NEWS

It has not been possible to obtain full funding towards the provision of a permanently mounted digital projector in the hall and the refurbishment of the hall floor. To this matter the Trustees have decided to continue with the floor refurbishment and to delay the projector until further funds are found. It was also decided at the recent Trustees meeting that funding obtained at last year's Shop'n Treat will be used to progress the floor and projector projects and the oven renewal will be revisited later in the year

with possibly user groups making contributions towards the purchase.

Blackout blinds on the all windows in the hall have now been installed and have met with favourable comment.

A new 3-year deal with Utility suppliers has been agreed and smart meters installed.

Work to improve the drainage from kitchen sinks is now also completed.

Monday morning, Friday afternoon and Friday evening every other week are the only sessions that are not booked for regular hire during the school term time.

The Munson room can be hired separately and has room for a small group of 10-15 people with toilet and tea making facilities.

The hall offers excellent facilities at very reasonable rates and I encourage those who do not know the hall to arrange a visit and acquaint yourselves with the building.

Please see current hire charges below.

CONTACTS

Chair: Russell Milburn 01206 825739

If you have any issues with regards to the hall would you, please address them to the cleaner firstly and then the Chairman. The contact details are on the hall notice boards.

HALL/PAVILION HIRE

The Pavilion/Bar is now available for hire either individually or as well as the Hall.

All enquiries should be via the

Village Hall booking clerk, Pat Burmby on 01206 823983.

VILLAGE HALL AND MUNSON ROOM CHARGES

	MAIN HALL		MUNSON ROOM	
<i>MONDAY TO FRIDAY</i>	<i>Standard Rate</i>	<i>Regular Hire</i>	<i>Standard Rate</i>	<i>Regular Hire</i>
All Day	£100.00	£52.00	£60.00	£45.00
Morning (08.30-12.30)	£35.00	£17.00	£20.00	£15.00
Afternoon (13.00-17.00)	£35.00	£17.00	£20.00	£15.00
Evening (18.00-22.00)	£40.00	£22.50	£25.00	£20.00
(22.00-23.45)	£15.00 extra hire	£15.00 extra hire	£15.00 extra hire	£15.00 extra hire
<i>Note: A Dance or Party hire on a Friday evening for the Main Hall will be chargeable at the Saturday evening rate</i>				
<i>SATURDAY</i>				
All Day	£180.00	£120.00	£90.00	£80.00
Morning (08.30-12.30)	£50.00	£30.00	£30.00	£20.00
Afternoon (13.00-17.00)	£50.00	£30.00	£30.00	£20.00
Evening (18.00-23.45)	£100.00	£70.00	£40.00**	£40.00**
			**Can only be booked with the Main Hall on Saturday evening	
<i>SUNDAY</i>				
All Day	N/A	N/A	N/A	N/A
Morning (08.30-12.30)	£50.00	£30.00	£30.00	£20.00
Afternoon (13.00-17.00)	£50.00	£30.00	£30.00	£20.00
Evening (18.00-22.00)	£55.00	£30.00	£30.00	£25.00

Pavilion/Bar

For further information on Pavilion/Bar hire please contact the Village Hall booking clerk,
Mrs P Burmby on 01206 823983

Village Hall continued...

These are the regular hire groups currently using the hall facilities:

Village Hall

- **Alresford Indoor Carpet Bowls Club:** Monday afternoon and evening
Alresford Horticultural Club: First Monday of the month (March to November)
- **Alresford Lunch Club:** Tuesday lunchtime
1st Alresford Scout Group (Beavers): Tuesday Teatime
Dog Training Classes: Tuesday evening
- **Tai Chi:** Every Wednesday morning
Alresford Art Club: Every other Wednesday afternoon
Alresford Women's Guild: Wednesday evening
- **Exercise Classes (Extend):** Thursday morning
Alresford Camera Club: First and third Thursday evening of the month
Alresford Women's Institute: Second Thursday evening of the month
Dog Training Classes: Fourth Thursday evening of the month
- **Alresford Calligraphy Group:** Friday morning
Alresford Singing Group: Every other Friday afternoon
Alresford Indoor Carpet Bowls Club: Every other Friday evening
- **Craft and Farmers Market:** First Saturday of each month (February to December)

Pavilion

- **Alresford Colne Rangers Football Club:** Under 8s, Under 14s, ladies and mens
- **Dog Training Classes:** First, second and third Thursday evening of the month

If more information is needed for any of these groups, please visit Village Hall website or contact Russell Milburn 01206 825739.

IT IS YOUR HALL

Of course, we could do things differently at times and anyone who has new ideas or concerns can contact a Trustee at any time. Please let the Chairman Russell Milburn or any of the Trustees know of any ideas you have that can improve the hall.

Russell Milburn AVHMC



COCKAYNES WOOD TRUST

EVENTS COMING UP:

BIOBLITZ DAY

Sunday 2nd June

ANNUAL FAMILY FRIENDLY ACTIVITY DAY

Sunday June 30 at 11 AM

GLOW WORM EVENING WALK

Friday 5th July

More information via our Facebook page
& in next times magazine

UPCOMING MONTHLY WORK PARTIES

April 7th 2019

May 5th 2019

We're a very friendly team of enthusiastic locals and welcome any new assistance. Work at your own pace

Tasks vary from month to month and include footpath maintenance, scrub clearance, coppicing and habitat creation

We are fully insured and provide all tools and equipment needed, all you need to bring is suitable clothing and a snack

Children welcome with an adult to supervise them
Starting at 10am weather permitting

Meet at the car park - accessed from Wivenhoe Rd, Alresford, beside the railway bridge.

Grid Ref. : TM 052216,

Post Code : CO7 9JX

If you would like to join us for one of our work parties and are not on our regular mailing list, please contact us by 9:00am on the day to confirm that it is still going ahead as we sometimes have to cancel or change the date due to bad weather or non-availability of organisers.

Contacts:

Andrew Barker 01206 823215

Roger Robson 07710 960376



ALRESFORD CARPET BOWLS CLUB

The Club meets in the Village Hall most Monday afternoons and evenings. All equipment is available, all that's needed is a suitable pair of flat shoes.



Bowling sessions are as follows:

Monday afternoons - 2pm to 4pm

Monday evenings - 7pm to 10pm

Why not give carpet bowls a try;
to encourage this we do not make a charge for the first 2 sessions, also included are Tea and Biscuits!!

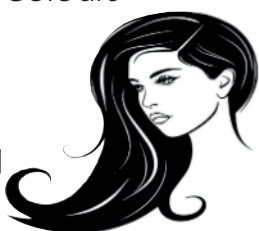
For further information contact:
01206 820710

FLAIR HAIR

UNISEX SALON



*Sets
Cut & Blow-Drys
Hi-Lights
Perms
Dry Trims
Foil
Colours*



Reasonably Priced
And Friendly

Opening Hours

Mondays	9am - 3pm
Tuesdays	9am - 4pm
Wednesdays	9am - 3pm
Fridays	9am - 12.30pm
	1.30pm - 6pm
Saturdays	8.30am - 3pm

Clacton Road
Elmstead Market
CO7 7AA

Phone for an appointment on: 01206 822771



MANOIR LOUNGE

BEAUTY SALON

&

SEMI-PERMANENT MAKEUP

Tel: 07769 174 081

Email: relax@manoirlounge.co.uk



THE BARN HOUSE
FORD LANE • ALRESFORD
COLCHESTER • ESSEX
CO7 8AX

www.manoirlounge.co.uk

Weddings Funerals
Plants Bouquets Baskets

Delivery - Local, National and International

Fleur Parfait

Chris Thompson, Qualified Florist

01206 820196 • 07857 625119

5A Vine Parade Wivenhoe Essex CO7 9HA
www.fleurparfait.com

Monday 9-5
Tuesday 9-5
Wednesday 9-5
Thursday Closed
Friday 9-5
Saturday 9-12.30



www.simplyhaberdashery.com

Check out our vast range of products and low prices.

Fabrics, quilting accessories, Braids & trimmings, Buttons, Cords, Elastics, Fasteners, Sewing & mending accessories, Sewing machine accessories, Threads, Velcro, Ribbons, Zips, Tapes and much more...

**Free delivery
or shipping!!**



01206 587177
info@simplyhaberdashery.com

Paypal and all major credit & debit cards accepted

ALRESFORD NEIGHBOURHOOD POLICING TEAM

Neighbourhood Police Officer:
PC Dan Heard

Police Community Support Officer:
Julia Brandon

CONTACTING THE POLICE:

TO REPORT AN EMERGENCY - DIAL 999

TO REPORT A NON EMERGENCY - DIAL 101

Essex Police Website: www.essex.police.uk

JANUARY REPORT

INCIDENTS:

04/01 - Domestic.
05/01 - B1027 - Car driving erratic.
07/01 - Concern for welfare.
08/01 - Fraud by telephone.
10/01 - Male looking in residents bushes.
10/01 - 3 horses loose/concern for safety.
12/01 - Domestic.
16/01 - Ford Lane - Sus circls.
21/01 - Coach Road - Level crossing failure.

CRIME REPORTS:

31/12 - Possession of cannabis - Street warning.
04/01 - Domestic.
06/01 - Theft of number plate.
07/01 - Ford Lane - Indecent exposure.
12/01 - Criminal damage/domestic.
12/01 - Assault without injury.

PCSO REPORT:

The speed gun will be active in the village on a regular basis.

January monthly result - Alresford 49 - top speed 59
Total 213

The **speed signs** shown clearly on the roads are the maximum speed for the safety of the road.
Residential area are usually **30mph** unless showing otherwise.

It is your responsibility to drive within the conditions of the law.

The speed gun is set at a generous amount and if exceeding this you may get a course/fine/points.

Flood - The flood problem on Tenpenny Hill is now being addressed and a drain is/has being fitted. Please take care when driving in that location.

Naked Male - Reports of a naked male have been reported around the Ford Lane area, near the fishing lakes.

Security - For extra security, it is a good idea to install motion sensor lights at the front and back of your property. CCTV is an added benefit which gives you peace of mind knowing when someone has been near your property. Many cameras have a smart phone app, so you can stay informed when you are aware from home.

FEBRUARY REPORT

INCIDENTS:

01/02- Neighbour dispute.

02/02- Missing Person.
02/02- ABAND 999.
03/02- Main Road- Possible burst pipe.
06/02- Main Road- Loose Horse.
07/02- Insecure premises.
08/02- Malicious comms.
10/02- Domestic.
10/02- ABH.
15/02- ABAND 999

CRIME REPORTS:

02/02- ABH Domestic.
10/02- Criminal damage/assault.

PCSO REPORT:

February monthly result - Alresford 86 - top speed 48

The **speed signs** shown clearly on the roads are the maximum speed for the safety of the road.

There has been an overall difference in figures of 60% speeding reduction in Alresford/Gt Bentley since first active in April 2018.

Good News - The drain work due to the flooding water from the field is now complete alongside the stables entrance on Tenpenny Hill.

Vehicle lights- Please check vehicle lights on a regular basis- I have noticed and spoke to a few drivers in the village with defective lights.

Security- For extra security, it is a good idea to install motion sensor lights at the front And back of your property. CCTV is an added benefit which gives you peace of mind knowing when someone has been near your property. Many cameras have a smart phone app, so you can stay informed when you are aware from home.

If residents have any concern on suspicious vehicles or activity in the village, please feel free to contact me, with as much detail as possible, including contact details so I can investigate.

Email- julia.brandon@essex.pnn.police.uk

Tel - 101 Ext - 440222



Book Club/Coffee Morning
I will be attending the
St Andrews Church Book Club
on the 21st February
10.30am-12.00pm

Pop along if you would like to have a chat or talk about problems/concerns in the village and enjoy the warm welcoming with a slice of cake and coffee.

EWD
RECYCLING



is a proud
sponsor of



Providing 25 Years Experience In:

- Skip Hire - From 2 yard up to 12 yard
- RoRo Bin Hire - From 15 yard up to 40 yard
- Tipper & Grab Lorry Hire
- Aggregate Deliveries



*Recycling TODAY 'S waste ...
... for TOMORROW 'S world!*



Find us on
Facebook



follow us
twitter



YouTube



LinkedIn

tel: 01206 30 70 30

MORSES LANE INDUSTRIAL ESTATE, BRIGHTLINGSEA, COLCHESTER, ESSEX CO7 0SD
Email: info@ewdmail.co.uk - Website: www.easternwastedisposal.co.uk

Have a look at our website ... it's worth it!

M. J. GREEN

TRADING AS M. J. GREEN TREWORK (WIVENHOE) LTD

Established 1977

**41 VANESSA DRIVE, WIVENHOE
ESSEX CO7 9PB**

TELEPHONE 01206 825503

(24 hour emergency service)

Mobile phone numbers:

07786 632002 • 07771 638064

07771 638067

- Tree felling contractor
- Surgery, coppicing
- Reshaping, reducing
- Hedge cutting, grass cutting
- Rough gardens cleaned and cleared
- Stump grinding
- Fencing supplied, erected and repaired
- All rubbish taken away
- Suppliers of firewood, logs

Free estimates and advice

Full insurance cover • N.P.T.C qualified



MAKE YOUR HOUSE A HAPPY HOME

**TRADITIONAL LOCAL
HANDYMAN SERVICES**

“From fixing a shelf to hanging a door,
Cleaning the gutters to laying a floor,
Decorating your home or just your hall,
Fitting your kitchen or tiling a wall,
No job too large or too small,
Pick up the phone and give me a call”.

Free quotation, competitive rates
and over 30 years of experience

CALL BOB on 07886 291071

Email:- hhmenquiries@gmail.com

**Gas Appliance
Maintenance
Service Ltd**

Est. 1976

Annual boiler servicing specialists

*Fast responsive breakdown service
with no call out charges*

Landlord Gas Safety certification

We arrange quotes for:

- Boiler changes
- System updates
- Power flushing

Local & reliable

Trading Standards approved

No VAT on servicing or breakdown labour



Call: 01206 366306 / 07860 197927

33 St John's Green, Colchester, Essex CO2 7EZ



ALRESFORD PARISH COUNCIL

CHAIRMAN'S REPORT

Cllr Frank Belgrove

The object of this report is to keep residents up to date on the current key projects, plans and decisions of Alresford Parish Council. For full Council meeting minutes please see the Parish Council website, view them on social media or visit the Parish Council office (by prior appointment with the Clerk). Meeting agendas are published on the website, social media and on the two village notice boards.

Parish Council - grants recently awarded to local groups:

Each year Alresford Parish Council budgets a sum of money - currently £5000, so that village organisations can apply via a grants scheme to obtain much needed funding. The process is tightly controlled and all application forms are scrutinised to make sure that precept money destined for grants is spent wisely. The latest round of grant funding approved by the Parish Council is as follows: £2000 awarded to the "Luncheon Club" (provides a weekly communal cooked meal for senior citizens in Alresford). £150 awarded to the Alresford Fete Committee (to assist with fete insurance costs). £1000 was given as a grant to the Village Hall towards a digital projector and other improvement. £524.94 awarded to Alresford pre-school for educational play equipment. Alresford Colne Rangers received £400 for Women's football, £400 for Youth football and £500 for grounds maintenance equipment.

Parish Council - grants recently received:

£7000 from Essex County Council: towards the cost of employing a village maintenance person.

£7000 from Brett Aggregates and Brett Concrete: towards a Vehicle Activated (speed) Sign on the B1027.

Highways and Street Lighting:

Alresford Parish Council has responsibility for many streetlights in the village and is continuing the process of changing all tungsten lights to more efficient LED lighting units. Lighting owned and maintained by Essex County Council is also being upgraded; however there have been significant faults with some of the ECC lighting. In Wivenhoe Road, for example, a number of streetlights have not functioned for many months and the Parish Council has been lobbying County Hall to prioritise repairs to these lights. If residents note a faulty streetlight please report it to the Parish Council Clerk.

The breaking away of kerbstones from roadway edges is a real problem on many roads in Alresford. Some repairs are scheduled as a priority for Orchard Road and it is accepted by Essex County Council that many of the surrounding roads need similar attention but due to the relatively small maintenance budget the work is unlikely to be extended to other locations for many months. A significant pothole in Coppice Road has at long last been repaired and so there is at least some positive news to report as regards highway repairs.

Three highways safety matters have been submitted to the Local Area Highways Panel for consideration, these are Cockaynes Lane (request for a 20mph speed limit), B1027 where it passes through Alresford (request for a 30mph speed limit), Wivenhoe Road (request for investigation into further traffic calming measures).

The problems of adequate weekday parking availability in Station Road are to be considered by the Council and a working party meeting is to be held with the Tendring District Council member responsible for parking enforcement. The fading of yellow safety road markings outside the school is also to be considered, a recent request for renewal of the markings was unfortunately not given priority status by ECC.

Environment:

Littering and fly tipping are prevalent issues in many communities, including at times in Alresford. The Parish Council will seek prosecution of anyone caught fly tipping or littering within the Parish. We encourage parents to train their children to use litter bins (there are ample bins!) as the nature of the litter found in the centre of the village indicates it was mainly dropped by children, smokers dropping cigarette butts and empty packets adds to the problem. The new bins installed have a provision to extinguish and dispose of cigarette butts. In the outskirts of the village takeaway litter jettisoned from cars is a problem.....if anyone sees this then please jot down the vehicle registration number. The Parish Council is grateful for the many volunteers who carry out litter-picks and to our litter contractor who deals mainly with the playing field and community car park. Fly tipping in Cockaynes Lane and along Brett's private road has increased lately and we ask that residents report this straight away either directly to Tendring District Council or to the Parish Council.

Due to the exceptionally mild winter, with record breaking February temperatures, the grass areas of the village required attention earlier in the year than usual as grass and weed growth hardly slowed through the winter months. The grass cutting season may have to be permanently extended in future years as the climate seems to be rapidly changing.

Footpaths and other Public Rights of Way in the countryside are the responsibility of the Landowners and the County Council but Parish Councils have powers in this regards also. As devolution of highways responsibilities to Parish Councils begins Alresford Parish Council will take a more active role in managing our rural footpaths. There have been complaints and observations by Councillors, residents and visitors that some footpaths are not well maintained and not properly marked by signs.....these matters will be attended to.

The Playing Field:

Safety fencing and a steel access ladder has now been installed at the outfall from a culvert area at the edge of the village playing field, a safety inspection had flagged up possible dangers. A number of repairs will soon be carried out to the Skate park,

continued overleaf

SIBBONS

Serving The Community
1964-2017

DIY Centre

Ladies Clothing

Plant & Tool Hire

Country Clothing

Keelars Tye
Keelars Lane
Elmstead
Colchester
Essex CO7 7EP

Tel: 01206 823448
Fax: 01206 825266
Email: Sales@Sibbons.co.uk

www.Sibbons.co.uk



**NEW
TRADE
SHOP**

IAN LONGHURST BUILDER

Established 1982

WORKING IN WIVENHOE FOR OVER 30 YEARS!

All external work inc. Brickwork and Roofing

All internal work inc. Kitchens and Bathrooms

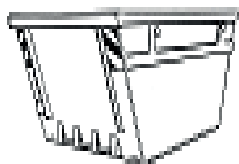
Free Advice and Estimates

Speak to Ian or Tina:

☐ 07484 724262

ianlonghurstbuilder@outlook.com

SMALL SCALE SKIPS



1 1/2 & 2 YARD MINI SKIPS

COMPETITIVE RATES

WE DELIVER

SAND ♦ BALLAST ♦ STONE ♦ MOT TYPE I & II
SOIL ♦ CRUSHED CONCRETE

01206 822770 OR 07802 265712

PHONE ANYTIME

JFS



**Heating, Plumbing,
Electrical and
Renewables Specialist**

**Friendly and Trustworthy
Local Engineer**

Please Call Jack on
**01206 820599
07818 034032**

17Heath Road
Alresford
Essex
CO7 8DT

DOUBLE GLAZING REPAIRS

**Full Locksmith, Burglary Repairs
& Board up Service - 24/7**

*Tradesman with 25 years
experience specialising in the
REPAIR AND REPLACEMENT for:*

UPVC, Wood & Aluminium
Misted or cracked sealed units
Broken locks, hinges & handles
Servicing to Conservatory Doors
& Windows
Garage Door Repairs
Key cutting
Free Consultation & Diagnosis
No call out charge, No VAT
All areas covered

Tel: 07977 720369
THE WINDOW DOCTOR

10% OFF WITH THIS ADVERT



Alresford Parish Council continued:

fencing around the play area and to play equipment. The Parish Council appreciates the work carried out by volunteers from the football club who help maintain the pitches and keep the field looking so good.

Your Parish Council and the Neighbourhood Plan:

We are fortunate in Alresford to have Parish Councillors with a diverse range of qualifications, skills and life experiences - this diversity is so useful in dealing with the many issues that crop up from time to time. It is important though that residents realise that the powers of a Parish Council are set in law and that the Parish Council can only do what the law allows it to do. A Parish Council has a surprisingly long list of powers at its disposal but in planning matters Parish Councils currently have no direct powers - a Parish Council is not a planning authority, it is however a statutory consultee and can give an opinion to the Local Planning Authority.....that opinion though must be based on planning legislation. When the Alresford Neighbourhood Plan is in place not only the Parish Council but the whole community will at last have a lawful say in the future of planning and development in the village - whilst policies in the Plan cannot block development that is already part of the Local Plan they can shape where that development will go and what it will look like. The Neighbourhood Plan will be an immensely important document for the future of our village and as Chairman of the Parish Council I thank the Alresford Parish Council Planning Committee and the Neighbourhood Plan Steering Group for their continuing work on the project to produce a Neighbourhood Plan for Alresford.

ALRESFORD PARISH COUNCIL

- CONTACT DETAILS:

The Parish Office, The Pavilion, Ford Lane,
Alresford CO7 8AT

Council meetings are held at The Pavilion on the first Wednesday of every month at 7.30pm.

Public & Press are welcome.

Agenda & Approved Minutes on website

Website: <http://www.essexinfo.net/alresford/>

Facebook: Alresford Parish Council (Parish Council only) / The Pavilion & Playing Field - Alresford Essex

Twitter: @alresfordessex

Chairman: Cllr Frank Belgrove - 01206 823739

Vice Chairman: Cllr Ernie Osborne - 01206 822168

Cllr Linda Belgrove 01206 823739

Cllr Simon Clark 01206 827884

Cllr Charlotte Day 07960 072137

Cllr Sue Hammick 01206 618659

Cllr John Housden 01206 827118

Cllr George Martin 01206 820801

Cllr Gary Scott 01206 820769

Cllr Ann Wiggins 01206 825153

District Council Tendring.

District Councillor Gary Scott - 01206 820769

Email: cldr.gscott@tendringdc.gov.uk

County Council Essex

County Councillor Alan Goggin - 01206 308023

Email: egog@btinternet.com

Parish Clerk - The Proper Officer - 01206 615117
(Answerphone 24/7)

Email: alresfordpc@outlook.com

Responsible Finance Officer & Assistant Clerk -
01206 615117 (Answerphone 24/7)

Email: rfopcessex@outlook.com

BAG IT, BIN IT



***Please Be a Responsible
Dog Owner &
Clear Up After Your Dog.***

***Help To Keep Our
Local Community Clean***

ALRESFORD CRAFT AND FARMERS MARKET

Alresford Village Hall
Ford Lane CO7 8AS

First Saturday of the Month

6th April

4th May

9.00 am to 12 noon

*There are many different
stalls and a cafe*

Free Admission

Free car park and disabled facilities available

MARK BRUMPTON TREE SERVICES

TREE SURGEON

- ♣ Felling,
- ♣ Reshaping,
- ♣ Reducing
- ♣ Surgery Work
- ♣ and Clearance

FULL INSURANCE

For Free Estimate
and Advice

TELEPHONE:
01206 825498



Roxburgh Colchester Main Road Alresford



SALES SERVICING REPAIRS HIRE
OF

GARDEN MACHINERY AND EQUIPMENT

*

HEDGE TRIMMERS – CHAINSAWS - STRIMMERS

WALK BEHIND MOWERS – LAWN SCARIFIERS

CHIPPERS – SHREDDERS – ROTAVATORS

RIDE ON MOWERS

*

UNIT 1 FRATING HALL FARM, CHURCH ROAD,

FRATING, COLCHESTER, CO7 7HD

TELEPHONE: 01206 250990/07860 411024

WEB: www.gbfarmservices.co.uk

EMAIL: gbfarmservices@btconnect.com

Elegant WINDOWS, Beautiful DOORS & Stylish CONSERVATORIES



Installed according to the Tricept
Better Fitters Code Of Practice

Suppliers of TRICEPT Multipoint
Locking windows, doors and
conservatories. Fascias, soffits
and cladding also available.

Wherever you are we deliver quality



HOME IMPROVEMENTS

01206 823903

www.aandk.co.uk 5 minutes from Essex University on the Main Road in Alresford

A&K House, Main Road, Alresford, Colchester CO7 8DB

AJ HOME IMPROVEMENTS and repairs

General Building Services

Plastering

Kitchens

Bathrooms

Carpentry

Plumbing

Electrical

Fencing, Paving & Patios

Professional - Reliable - Affordable

01206 306169 or 07766 565249

www.AJ-HOME.co.uk



Alresford Garage Ltd

A family business established since 1975

- Routine servicing
- MOT's (free retests)
- Tyres and exhausts
- Air con centre
- Loan cars
- Servicing to cars under manufacturer's warranty



Alresford Garage

Main Road

Alresford

Colchester CO7 8DB

Reg. No. 1205244

- Diagnostics and code reading
- Easy parking
- Free coffee
- Good Garage Scheme
- Comfortable Waiting Room

Service: 01206 825245 • Sales: 01206 822875
www.alresfordgarage.co.uk

WHITTLES

CHARTERED ACCOUNTANTS

Sound, clear advice
Personal, practical
approach

Business advisory, tax, audit and accounting services for companies, charities, trusts and individuals.



COLCHESTER OFFICE

The Old Exchange
64 West Stockwell St
Colchester CO1 1HE

T: 01206 762200
E: mail@whittles.co.uk

WEST MERSEA OFFICE

15 High Street
West Mersea CO5 8QA

T: 01206 385049
E: mail@whittles.co.uk

www.whittles.co.uk

COMMUNITY CORNER

- exciting volunteer opportunities, community reminders
& other information on village clubs/organisations

THE IMPORTANCE OF TREES



Alresford has lost many trees in the last few years. Sometimes the removal is necessary due to the wrong tree in the wrong place or it has become dangerous. Other times it is to make way for progress. Trees are vital to our well-being and that of our environment so I'd like to start an appreciation of trees in Alresford and plant more.

Trees are invaluable :

- they absorb carbon dioxide which helps combat climate change
- they absorb odours and pollution, and filter the air through their leaves and bark
- they produce oxygen
- they provide shade for our streets, cooling the air and slowing down evaporation from the soil, as well as giving protection from UV light.
- they help reduce water run off and soil erosion.
- they provide food and habitat for the birds, insects and wildlife.
- they improve the look and feel of the village and mark the change of our seasons.

So lots of reasons to love and appreciate trees. Over the summer it would be great if you could be especially mindful of the Alresford environment on your walks and as a community pick out places to plant appropriate trees throughout the village. They could be trees that have a meaning for you, for shade, food, their blossom or the fruits that they bear.

Get thinking and I'll be writing in a further Alresford Advertiser to ask for all your ideas.

Sue Hammick
Tree Warden



HELP REQUIRED AT ST PETER'S CHURCHYARD

Many in the village and indeed those with connections to Alresford will appreciate the wonderful setting that offers all those who visit St Peter's an experience of connection with their loved ones or a place to just enjoy peace. St Peter's Church and Churchyard never fail to leave an impression on all visitors where the history, a place to pay respect to those departed, to take in the rural beauty or on occasion to meet and talk to others who are visiting.



The ruins and churchyard have, over the past 33 years, been lovingly attended and maintained by Ray Giles. Many will have met Ray over these years and would have not only enjoyed a word or two in general conversation but on occasion would have benefited from Ray's pastoral care that results from his deep rooted faith.

Ray has now decided to retire from this labour of love and we, on behalf of Alresford, would like to pay tribute and offer gratitude to Ray for his services to the people of our village.

St Andrew's Church is now looking for help to carry on the work that Ray has done, and we are looking for volunteers. The work required is generally grass cutting, strimming in the more delicate areas, keeping a general standard of order with respect to tidiness in and around the graves and occasionally pruning of shrubs and trees.

Whether it is Winter, Spring, Summer or Autumn this is a truly wonderful place to spend one or two hours just pottering and if you think you would like to be involved or would like to know more then please contact one of the Church Wardens; Wendy Wilson 01206 825040 or Lyn Bull 01206 827146

Notice Board

ST ANDREW'S CHURCH BREAKFAST EVENT

SATURDAY 27th APRIL
9.15am for 9.30 start

There will be a delicious buffet breakfast with guest speaker, Vivienne Wiggins. Vivienne is the CEO of Beacon House, Colchester and will be speaking about its work with homeless and marginalised people since starting in 1996. Beacon House seeks to relieve poverty and sickness for those who are homeless or at risk of becoming so.

A minimum donation of £3.00 per head is requested and any proceeds, after expenses, will be donated to Beacon House.

Everyone is welcome! For queries or to book a breakfast place, please contact Carol Day on 01206 823312

DAY TRIP TO BURY ST EDMUNDS

On Tuesday July 16th

Jenny White is running a coach trip to
"Suffolk Farmhouse Cheeses"

at Creeting St Mary, then onto
Bury St Edmunds for the afternoon,
leaving Bury at 4-30pm

The coach leaves the Village Hall
at 9-00am.

The cost is £15pp
plus £5 admission to the farm

To book a place please ring 825317
or call at 5 Cox Road

**For the whole family
@ St Andrew's Church Alresford**



www.alresfordchurch.net

*Messy activities & crafts ...leading into a short &
informal story time & songs ...
and ending with tea!*

Friday April 19th - MESSY EASTER

Friday May 17th

4.30pm

at St Andrew's Church & Hub

Everyone Welcome!

OPERATION CHRISTMAS CHILD - SHOE BOX APPEAL

We would like to thank all who supported this appeal with donations of completed boxes, individual items that go towards making up boxes and donations of money. A van collected 115 completed boxes plus additional items for fillers. The boxes went to Belarus, a country that is still struggling with the aftermath of Chernobyl. We were waiting to find out the destination of the boxes, which is why this thank you is so late. Many of these children have very little or even a present. This helps us to reflect on the meaning of Christmas by giving a personal box of love.

This coming year, due to various import regulations, toothpaste and sweets will not be permitted.

Thank you again for the love shown
Zanne Friston and Penny Dimmock

ALRESFORD MOBILE LIBRARY:

STOP: Alresford Village Hall

ARRIVES: 11.55

LEAVES: 12.25

DATES: 11th April

2nd & 23rd May



**Spring is nature's way of
saying, 'Let's Party'**



Robin Williams

NOTABLE DATES IN APRIL/MAY 2019

April 1st Monday April Fool's Day
April 19th Friday Good Friday (Bank Holiday)

**HAPPY
EASTER**

April 21st Sunday Easter Sunday
April 22nd Monday Easter Monday
(Bank Holiday exc In Scotland)
April 23rd Tuesday St. George's Day
May 6th Monday Early May Bank Holiday
May 27th Monday Spring Bank Holiday

S
M
I
L
E



You can tell an ant's gender by putting it in water.....

If it sinks, girl ant. If it floats, buoyant.

What colour is the wind?

Blew

Milk is the fastest liquid in the world...
It's pasteurised before you can see it

What's an optimistic vampire's drink?
B-Positive

What starts with an "O" and ends with "nions" and sometimes make you cry?

Opinions

This morning I tried to catch some fog.....

Mist it

I once had a conversation with a dolphin.....

We just clicked

And finally...

**"Love and compassion
are necessities, not luxuries.
Without them humanity
cannot survive."**

The Dalai Lama



Until next time...

spring
flowers rain
grow fresh
springtime
bloom showers

CONTACT DETAILS

EMAIL:

alresfordadvertiser@gmail.com

TELEPHONE: 01206 825739

ADDRESS: 22 Station Road, Alresford

For enquiries about advertising your company or organisation in the magazine, please contact us via the email address above or telephone lan on 01206 822303

Any correspondence sent for publication must be accompanied with your name and address or that of your organisation.

COPY DEADLINE

The editorial and advertising copy deadline for the next issue will be:

8th May 2019

DISCLAIMER

Submission of material does not always guarantee inclusion within the publication, and advertisements and editorials are published in good faith. The editors cannot be held responsible for the accuracy of any advertisements placed by advertisers. Editorial material does not necessarily reflect the views and opinions of the editors and neither editorial nor advertisements are to be read as recommendations on the part of the editors.