



Welcome back to the new term and we hope you all had an enjoyable Christmas. Happy New Year on behalf of all the staff and thank you for the lovely gifts received at the end of last term, they were all much appreciated.

We have a busy term coming up, please see the Diary of Dates and keep an eye on ClassDojo and ParentPay for further details.

**Dutton House** achieved the most house points last term, therefore the children in Dutton are being awarded with a **non-uniform day on Friday 12 January**.

### Morning snack / lunches

Lunches continue to be £2.70 per day. These should be paid for in advance on ParentPay (weekly or for the half term). The cost for this half term will be £67.50.

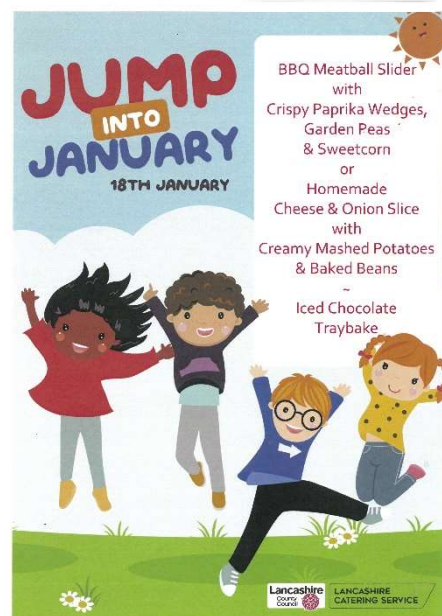
Morning snack (toast) is 30p per day. If paying on ParentPay please pay for the half term - £7.50.

Please note, credits for any lunches not taken will be carried forward.

### Jump Into January Lunch – Thursday 18 January

We will be holding a Jump Into January lunch on Thursday 18 January.

We also have some other themed days coming up this term – see the School Meals page on our website <https://www.ribchester-st-wilfrids.lancs.sch.uk/parents/school-meals/> for more details.



### PreSchool

We are now taking applications for our Pre-School intake for September 2024. Further information can be found on our school website <https://www.ribchester-st-wilfrids.lancs.sch.uk/pre-school/> or contact the school office on 01254 878300.

### After School Sports Clubs

Sports Clubs take place straight after school and finish at 4.30pm. The clubs for this half term are:

Monday – Reception & Hodder Class Football

Tuesday – Key Stage 2 Dodgeball

Please follow the link posted on ClassDojo to reserve your child a place.

### Attendance By Class For December 2023

Calder – 95.61%

Hodder – 97.73%

• Ribble – 98.01%

Wyre – 95.79%

Attendance of: 96% - 100% = **Green**

Attendance of: 90% - 95.9% = **Amber**

Attendance of: below 90% = **Red (Persistent Absence)**

## Diary of Dates:

12 January	Dutton House Non-Uniform Day
15 January	Closing date for Primary School Admissions (Sept 2024)
18 January	Special Lunch Menu- Jump into January
23 January	Year 5 Hockey skills at Longridge High School
9 February	School closes for Half Term break
19 February	Inset Day
20 February	School re-opens
29 February	Reception and Year 6 Heights & Weights check
5 March	Shakespeare Festival – Wyre Class
7 March	World Book Day (including special lunch menu)
7 March	Wyre Class Liverpool Trip
13 March	Let's Go Sing Concert
19 March	Reception and Year 6 Class Photograph
26 March	Year 5 Hockey Tournament – Longridge High School
27 March	Easter Lunch
28 March	School closes for Easter break
15 April	School re-opens

**easyfundraising**  
.org.uk

Ribchester St Wilfrid's School PTFA are registered with easyfundraising, which means you can raise FREE donations for us every time you shop online. Over 7,000 brands will donate to us when you use easyfundraising to shop with them – at no extra cost to yourself! These donations really mount up and make a BIG difference to us, so we'd really appreciate it if you could take a moment to sign up and support us. It's completely FREE and only takes a moment. You can find our easyfundraising page at

<https://www.easyfundraising.org.uk/causes/ribchesterswcptfa/>

So far we have a total of free donations raised to date of £1,619.56  
£5.36 in the last 30 days with 46 supporters