

## PLAY ADVENTURE ZONE ITEMS LIST

Equipment		
A.	OFC Air Walker	Ref: OFC02
B.	OFC Cross Trainer	Ref: OFC05
C.	OFC Ski Trainer incl Handrail	Ref: OFC10
D.	OFC Rower	Ref: OFC11
E.	OFC Bench + Pylon	Ref: OFC04P
F.	OFC Back Trainer + Pylon	Ref: OFC08P
G.	OFC Leg Press + Pylon	Ref: OFC07P
H.	OFC Pull Down + Pylon	Ref: OFC12P

Ancillaries		
I.	High Seating (x2)	Ref: J2825

**Groundworks**  
Area to be surfaced with 24m<sup>2</sup> EnviroSmart Grassmat.

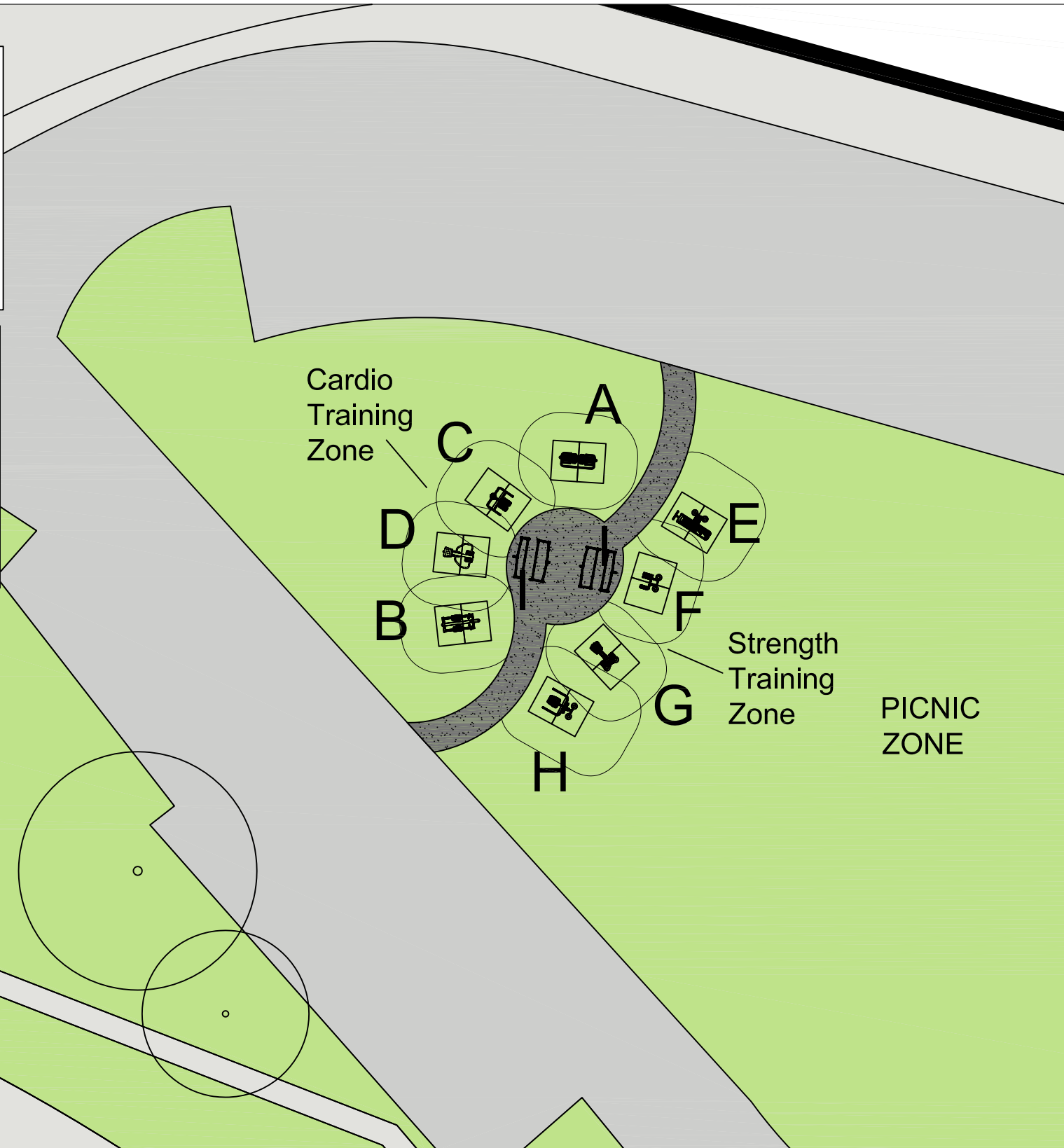
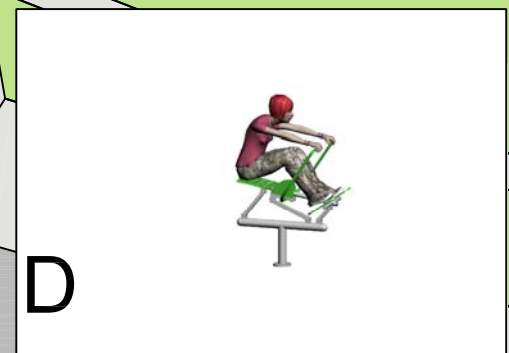
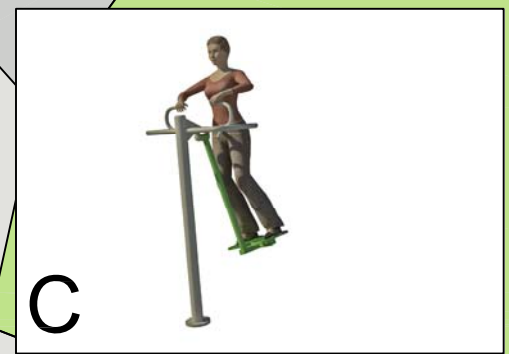
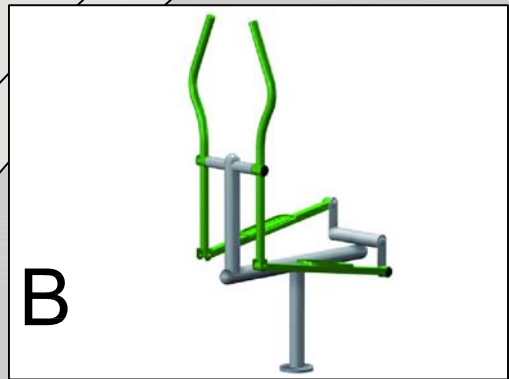
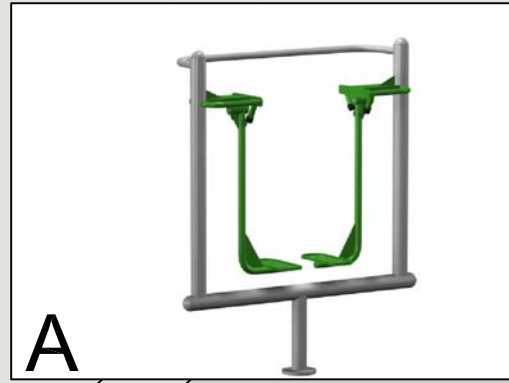
Path created using 32m<sup>2</sup> Proludic Ecobond-Bonded Rubber Mulch Upto 2.4m FFH 40mm in Black.

Remove 2x existing bench in western corner of grassed area.

Exact location of fitness area to be confirmed on site.



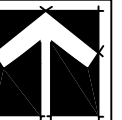
ALL EQUIPMENT & SAFER SURFACING CONFORMS TO EN1176 & EN1177



## Fitness Zone 2 - Area in front of Queen Mary Hall, Cambridge Gardens RB of Kingston upon Thames

Please visit our CRE lay scheme facebook page or send comment to [info@proludic.co.uk](mailto:info@proludic.co.uk)

Scale 1:250 @ A3



PRODUCT KEY			
	EnviroSmart Grassmat		Existing Tree Retained
	Bonded rubber surfacing		Fenceline
	Wetpour		Timber Sleepers
	Free Fall		Free Space



Date: 27/02/2012

Ref: 11.02212(CambridgeRoad&Cambridge Gardens\_RBofKingstonuponThames)

Designer: J Tindsley

Checked by: J Lord



The Pump House Abbey Road  
West Bridgford Nottingham NG2 5NE  
t: 0115 982 3980 f: 0115 982 3985  
e: [info@proludic.co.uk](mailto:info@proludic.co.uk)  
[www.proludic.com](http://www.proludic.com)