



## Newsletter, Spring 2011

**Welcome to the Spring newsletter,** which you will see is now full colour throughout. The cost of colour printing has decreased so much in recent years that full colour will cost CARA less than a third of a penny extra per copy - well worth it, we hope you'll agree.

### Street trees

In recent years, CARA streets have lost several of these pleasant green features of our neighbourhood — at their best at this time of year (see photos below). The Council, understandably in hard times, has little or no funding for tree replacement: each tree costs £360, which includes supplying, planting and watering for two years, though the cost could be reduced if residents watered the trees. Street trees do need to be carefully sourced, selected and nurtured if they are to survive and enhance their concrete surroundings, and CARA is looking into the possibilities.

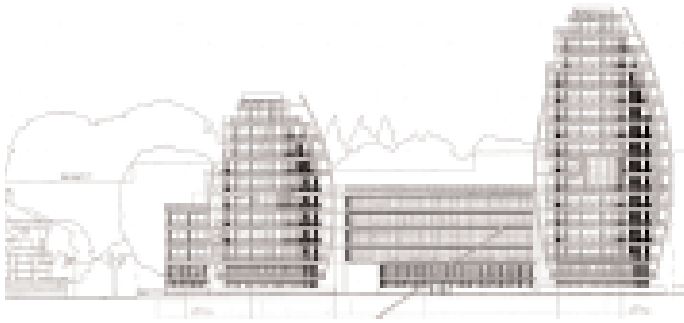
### No progress on the Power Station site

The current planning consent (for the first, taller and more dramatic, scheme, won in 2008 on appeal — see architect's drawings on next page) runs out in October, which means that work on the site was in theory to have started in just a number of weeks. However, on 3rd March the developer (NHP) was unable to get agreement from the Council to potentially provide a mix of affordable rented and shared ownership accommodation should a number of uncertainties in the provision of central government funding from the newly formed Homes and Communities Agency continue.

### CARA MEMBERSHIP

Along with this newsletter you will receive a membership statement showing the details we have for your address, and how to join if you are not already a member. Please let us know if any of the details are wrong, and if you haven't already joined we do hope you will consider doing so.





### Other possible local developments

We have heard that they are building flats with retail/café outlets on the ground floor by the river on Vicarage Road just north of John Lewis, just outside the CARA area.

There has apparently been some interest recently in developing the long-empty Slug & Lettuce on the riverside, possibly also for residential use, but so far there has been no related planning application.

The independent Office of the Schools Adjudicator decided in December that Kingston Educational Trust should establish a new school on the North Kingston Centre site. There is no further information on when or whether funding will be forthcoming from central Government, or on the likely impact of the school on local traffic, parking and wider environment.

### 24 hour licence for The Kingston Arena (formerly Gala Bingo Hall)

CARA has already written a letter objecting to the licence application on the grounds that no operations schedule was attached (they simply asked for a 24 hours a day/7 days a week licence), nor did they address how they would promote the four objectives of the Licensing Act. The council was of the same mind, and has refused to hear the application until an operations schedule has been submitted. The schedule will then be published for comment for a further 30 days before the application is heard.

It is not clear whether CARA's comments will be considered as the Council may not deem CARA to be an "interested party" as our patch is too far away. But rest assured we will carefully review and comment on the operations schedule anyway — there's nothing to lose! Please do the same, and please make sure your comments all relate to how the applicant addresses the licensing objectives which are: prevention of crime and disorder; public safety; prevention of public nuisance; protection of children from harm.

For more information, or to read CARA's letter to the Licensing Authority, please visit the CARA website.

### Parking on Lower Ham Road

Committee member John Parrish recently undertook a survey of residents of Lower Ham Road and nearby roads to find out whether there was significant demand for passing places or other parking restrictions. So far, there appears to be a majority in favour of losing six parking spaces in order to provide passing places.

**And while we're on parking...** don't park on the pavement. You and your visitors may think you are just being considerate of other drivers, but traffic wardens have very different ideas and have given several tickets in the neighbourhood for doing just that.

### Thames Landscape Strategy news

You may have noticed the scrub and bushes that TLS have tidied up along the towpath beyond the Half Mile Tree. They hope to do some more "vegetation management" in March — the date will be posted on the CARA website as soon as we hear.

TLS funding now seems more secure for the immediate future; they are grateful for the support shown by CARA and others. Changes are being considered for TLS management structure, as current arrangements end in March 2012. The outcome of their Strategy Review, to which CARA contributed, is due out for comments at the end of March. TLS's art exhibition based on London Transport Travel posters from the 1920s onwards may appear in Canbury Pavilion — keep an eye on the CARA website for updates.

### The Community Coffee Shop at Canbury Pavilion

is a partnership initiative between the Council's Learning Disability Services and Canbury Community Trust. It operates from the former bowling pavilion, lovingly restored by the Trust, with the aim of offering adults with learning disabilities experience of working in a catering environment and developing new skills, with support on hand if they need it. At the same time, the coffee shop offers passers-by and local people somewhere

to meet in a friendly community venue over a drink and snack. The coffee shop, which is open from Tuesday to Thursday from 12.00 to 4.00pm and on Fridays from 12.30 to 4.00pm, has proved particularly popular with mums and tots who use the nearby playground or take part in sports sessions nearby. If you have any queries, please contact Naomi Blackwell on 07514012297 or 020 8547 6658.

### CARA NatureWatch

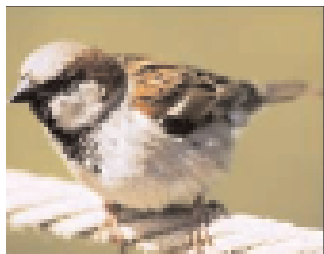
We hope this will become a regular spot in the newsletter, and welcome your contributions by email, including photos of local wildlife.



*Foxes have long been bold as brass in the area, even in daylight, but local exotic invaders, the ring-necked parakeets, also seem to be becoming bolder — or greedier.*



The new hedge planted by Thames Landscape Strategy along part of the Hawker Centre fence beside the towpath could eventually become a useful natural habitat for insects and birds such as the sadly declining house sparrow (*see right*) Suggested reasons for the sparrows' plummeting numbers are loss of trees and hedges and less insect food.



In the meantime, volunteers are needed for occasional help to establish the hedge by watering and weeding round the young plants through the spring and summer. Please contact Richard Mobbs.



*Unusually for geese, Egyptian geese nest in trees. The pair above were seen prospecting for a nest in a pollarded lime in the Hawker Centre grounds last year, and a similar pair were back this year.*

Another unusual sighting in the Hawker Centre grounds was a female pheasant in January, rather far from her usual farmland habitat. Pheasants have not been seen even in Richmond Park for years.

### Local History – 1: Canonbury, as it was

A 1792 report on Kingston is published on-line at <http://www.british-history.ac.uk/report.aspx?compid=45379#n103>, including a section on the manor of Canonbury, or Canbury, which then belonged to Merton Abbey, whose "possessions in Kingston and Hache, exclusive of Berwell, were valued, in Cardinal Beausort's time, at 52 shillings... It was in the hands of the crown during the reign of King James; in 1635 it became the property of William Murray, Esq. afterwards Earl of Dysart. In 1652 it appears to have belonged to Arabella Countess of Kent, and others. In 1664, it was the property of John Ramsey, Esq. who alienated it to Nicholas Hardinge, Esq. in 1671. It has continued in the Hardinge family ever since, being now the property of George Hardinge, Esq. M. P. This manor includes part of the town of Kingston. ..."

### How does your garden grow?

If you're proud of your garden, or even your balcony or window-box, because it's both beautiful and sustainable, why not enter the 2011 Kingston in Bloom competition? To find out more see [http://www.kingston.gov.uk/browse/environment/environmental\\_events/](http://www.kingston.gov.uk/browse/environment/environmental_events/) or look out for information in the local media and around town. Last year there were fewer entries than usual and the Council is keen to encourage more.

## Canbury Gardens

After a long winter, the daffodils in Canbury Gardens and on the Lower Ham Road verge are a welcome sight. Other improvements you might have noticed are the new hard-standing at the foot of the community noticeboards — no more sinking into the mud to read the notices — and work to improve the children's play area which should be completed by the end of March.

The Canbury Gardens Working Party met in February to review the work plan. Many of the proposals are long-term projects and will require significant funding, for example improving the gateways and entrances into the Gardens. It's hoped that most of the funding will come from a grant from the Heritage Lottery Fund. The application is being led by Thames Landscape Strategy and is itself a lengthy process, likely to take around two years. The first stage will include local consultation, and CARA will work with TLS on this. TLS are hoping to hold an event in April but at time of writing no date has been set — we will do all we can to keep you informed.

The Working Party restated its commitment to keeping the Gardens in the "informal Victorian" style which was the clear choice of the majority in the response to the consultation some years back.

## Police matters

In case you missed the news on CARA\_Kingston "tweet", or CARA on Facebook or the website, a new Police crime mapping service is now up and running - just enter your postcode at <http://www.police.uk/>. The crime rate round here is average, it appears, and the number of burglaries is down.

Tudor and Canbury Safer neighbourhood Teams have now in effect been combined under Sergeant Sam Mines, but there have been no cutbacks in foot patrols. Committee member Trevor Willis is working with the Canbury SNT Committee to get the police to focus on crimes against vulnerable people and young people, rather than vehicle crime.

## Local History — 2

Have you ever wondered why, however big it is or far back it extends, your Victorian or Edwardian house is so narrow, and why, as a result, there's only room for one car on the street outside? Apparently it's because early developers had to pay for the road as well — so the narrower the frontages, the less road they had to pay for. Thank you to Cllr Frank Thompson for this intriguing titbit.

*For updates and views follow us on Twitter: CARA\_Kingston or join our Facebook group: CARAKingston*

## CARA COMMITTEE

**Chair:** Hugh Scantlebury  
07812 027 244, [cara.kingston@googlemail.com](mailto:cara.kingston@googlemail.com)

**Membership Secretary** (& Canbury Gardens Working Party): Penny D'Souza, 14 Chestnut Road, Kingston KT2 5AP,  
020 8549 5331, [pennysouza@blueyonder.co.uk](mailto:pennysouza@blueyonder.co.uk)

Mike Buckley, Eastbury Road,  
[mike.buckley@blueyonder.co.uk](mailto:mike.buckley@blueyonder.co.uk)

Claire Ferguson (Albany Liaison), Ulster Court,  
The Albany, Albany Park Road

Clare Francis, Chestnut Road, 0208 549 458

Marilyn Mason (Newsletter; Liaison with Kingston Town Centre Management and local press), Lower Ham Road, 020 8546 4086, [marilyn.mason@virgin.net](mailto:marilyn.mason@virgin.net)

Richard Mobbs (Liaison with Thames Landscape Strategy, Newsletter distribution), Chestnut Road, 07762 598309, [richard@statacom.net](mailto:richard@statacom.net)

John Parrish (Treasurer), 108 Lower Ham Road, 0208 546 1235, [john.parrish@zen.co.uk](mailto:john.parrish@zen.co.uk)

Paul Taylor, Lower Kings Road, 07769 698 540

Trevor Willis (Liaison with Police, and Pavilion, Park and Gardens), 07889 731 264,  
[trevorwillis@london.com](mailto:trevorwillis@london.com)

**CARA COMMITTEE WOULD WELCOME**  
a new member to represent Canbury Place.

## DATES FOR YOUR DIARY

■ **Saturday 26th March, 11.15am until 1.00ish, CARA Spring Litter-Pick:** meet on Lower Ham Road outside Leander Sea Scouts to help tidy up the parts by the Thames that no one else reaches. These regular sessions are a great way to meet other local people and do something to support our beautiful environment. CARA will provide grabbers, gloves (you may prefer your own), rubbish sacks, high-visibility vests, and guidance on health and safety. Families welcome, as long as children are with a responsible adult.

■ **Sunday 5 June, "The Big Lunch":** why not organise a "big lunch" in your street? (See <http://www.thebiglunch.com>.)

■ **Sunday 10 July CARA BBQ** at the Pavilion, Canbury Gardens. Details later.

■ **All summer: evening photography and wildlife cruises** on the Richmond Venturer in aid of the River Thames Boat Project charity. See <http://www.venturerphotography.com>.